



INSTALLATION INSTRUCTIONS FOR WATERPROOF VINYL PLANK & TILE

	STOP	
	NO CLAIMS WILL BE ACCEPTED UNLESS ALL SPECIFICATIONS AND REQUIREMENTS IN THIS DOCUMENT HAVE BEEN MET.	

INSTALLATION INSTRUCTIONS

Thank you for choosing Choice Vinyl Flooring. Choice Vinyl features a variety of designs and styles that enhance the beauty and functionality of your home or business. To meet warranty requirements and ensure a successful installation, please review the following guidelines carefully. Installing vinyl flooring requires adherence to particular methods that depend on various criteria, including the type of sub-floor and site-specific conditions. For these reasons, Choice Flooring recommends that installation be carried out by certified installers who are proficient in vinyl flooring installation. It is the responsibility of the purchaser to select a reputable installation company. The National Flooring Association is one resource that can assist in identifying installers in your area. The guidelines provided here are not intended to be step-by-step instructions but rather important considerations for both the end-user and the installer.

READ CAREFULLY

LIMITED WARRANTY COVERAGE APPLIES ONLY TO PROPERLY INSTALLED AND MAINTAINED CHOICE VINYL FLOORING. The owner and/or installer assume all risks with respect to examination of flooring, jobsite and environmental conditions as well as the installation.

NOTE TO OWNER

Installing vinyl flooring is considered a highly skilled operation and it is critical that the owner choose an installer carefully. Choice Flooring recommends choosing a certified trained installer with references that can be contacted. Also, the installer should demonstrate previous job experience and have the proper business licenses for your area. The contact for installation is exclusively between the owner and the installer. Choice Flooring is in no way responsible for the owner's choice of installer or any failure by the installer to satisfy the owner.

OWNER / INSTALLER RESPONSIBILITY

- Prior to installing a single board, the installer must determine that the jobsite environment and the sub-surfaces meet the requirements set forth in this installation guide.
- Your installation area and subfloor must be clean, dry, sound, and flat within industry standards.

INSPECT ALL PLANKS FOR VISIBLE DEFECTS

- Planks installed with visible defects are not covered under this warranty. Accordingly, before installation, you and the installer should examine all planks to ensure they are satisfactory. Once installed, visible defective flooring is not covered under the warranty. If any planks are unacceptable due to gloss level, color, finish, milling or any other reason, it is up to you to determine to use them, hide them in areas like closets, trim off the imperfection, or not install them at all.
- Choice Flooring is not liable for any defective flooring that results, in whole or in part, from any jobsite or sub-surface condition that is not in compliance with standard industry standards, these instructions, or environmental conditions.
- Add at least 5% more material for waste.
- Plan on being present during installation to ensure that all required procedures are completed and planks with visible defects are not installed.
- If quality issues are suspected before or during installation, STOP installation and immediately contact us.
- Use of stain, filler or putty stick for touch-ups is considered normal practice.

APPLICATIONS

Vinyl click flooring can be installed on all grade levels of the home that are temperature controlled.

JOBSITE CONDITIONS

- The building should be enclosed with all doors and windows in place.
- Crawlspace, basements, and garages should be dry and well ventilated.
- Crawlspace must be a minimum of 18" from the bottom of the floor joist to the ground. Crawlspace must have a minimum 6mil thick polyethylene film covering the entire crawlspace ground.
- All gutters should be in place and functioning properly. Yard-grading should be sloped to run water away from the home's foundation.
- HVAC systems should be operational and have temperature maintained between 65 degrees Fahrenheit to 85 degrees Fahrenheit for at least a week prior to flooring being delivered.

ACCLIMATION/STORAGE

- Lay boxes flat on subfloor, no more than six cartons high at all times. Improper storage can result in bowing.
- Storage area and jobsite should be climate-controlled with temperatures of 65-85 degrees Fahrenheit.
- Acclimate the flooring in the boxes for at least 48 hours. Keep away from direct sunlight, heat sources, and in-floor vents during acclimation.

CAUTION

- DO NOT install in wet areas like patios and showers, or exterior areas.
- DO NOT install on walls, ceilings, in boats, or other moving vehicles.
- DO NOT install under kitchen cabinets.

PLANNING

- Permanent HVAC system must be in operation during and after installation for the life of the flooring. Make sure the temperature in the home is maintained between 65-85 degrees Fahrenheit year-round.
- Windows and sliding glass doors should have proper cover to prevent direct sunlight to the flooring in floating applications. Extreme heat from sunlight can cause edge curling or seam peaking.
- Install this floor after all other construction work has been completed.
- When installing over concrete, it is required to perform the proper concrete moisture testing.
- For the best look, mix vinyl planks and pull from several boxes at a time when installing.
- Always install in good lighting so visual defects can clearly be seen.
- It is recommended to have an additional box left over after installation to be used for repairs if needed.
- When moving furniture and heavy equipment on the flooring, use plywood to protect the panels from rolling wheels. DO NOT use cardboard.

- Make sure to add moldings to cover the expansion space between the flooring and wall, and when transitioning to other existing floors.

WOOD / CONCRETE SUBFLOOR REQUIREMENTS:

APPROVED WOOD SUBFLOORS

NOTE: Joist spacing determines minimum subfloor thickness.

Joist spacing 16" on center (OC)

Plywood: Minimum of (5/8")

Oriented Strand Board (OSB): Minimum (3/4", 23/32").

Joist spacing 16" up to 19.2" (OC)

Plywood: Minimum of (3/4", 23/32")

Oriented Strand Board (OSB): Minimum of 3/4", 23/32").

Joist spacing over 19.2" up to maximum 24" (OC)

Plywood: Minimum of 7/8")

Oriented Strand Board (OSB): Minimum of (1")

CLEAN: All wood and concrete subfloors must be swept clean or vacuumed to remove dust and debris.

FLAT: All wood and concrete subfloors must be flat within 1/8" over a 6' span, or 3/16" over a 10' span. All areas of the subfloor must be checked prior to installation. High spots can be sanded down and low spots are filled with appropriate patching compounds. Set protruding fasteners flush into the subfloor. Never sand and grind materials covered with lead paint, or containing asbestos. Follow local building codes for proper removal practices of asbestos and lead paints.

DRY: Wood subfloors should be dry. The moisture in wood subfloors should not exceed 12%. If high moisture is present, STOP installation until the moisture source has been corrected. Concrete must be fully cured for at least 60 days. Concrete must be tested for moisture by conducting a Calcium Chloride test (ASTM F 1869) or Relative Humidity InSitu Probe Test (ASTM F 2170). Calcium Chloride test results cannot exceed 3lbs per 1000sqft in 24 hours. Relative Humidity InSite Probe Test should not exceed 75%.

EXISTING FLOORS

- This flooring can be floated over existing clean, flat, dry, and well bonded/secured tile flooring, vinyl flooring, and hardwood flooring. Any embossed flooring will require skim coating with a patch to avoid bottom-up pattern telegraphing.
- DO NOT install this flooring over existing carpet flooring, cushioned vinyl flooring, or existing floating wood and vinyl floors.

RADIANT HEAT:

- This flooring is suitable for installation over Radiant heating systems provided that the heating element is not in direct contact with the flooring product. Heating element must have a minimum of 1/2" separation from the flooring product.
- New heating systems should be running two weeks before installation to remove residual moisture from the subfloor.
- Lower the temperature of heating system to 60 degrees Fahrenheit for one week prior to installation.
- Gradually increase temperature in increments of 10 degrees per day to avoid "shock" to vinyl flooring.
- Surface temperature should not exceed or sustain 80 degrees Fahrenheit.

FLOATING INSTALLATION METHOD

TOOLS NEEDED:

- Tape Measure
- L-Square
- Utility Knife
- Safety Glasses
- Broom/vacuum
- ½" Spacers
- Jigsaw
- Table Saw

Planning: Determine in which direction the planks will be installed. To make the room appear larger or if installing in very small rooms or hallways, it is preferable to lay the planks parallel to the longest room dimension. Use a jamb saw to undercut door casings to allow the flooring to slide freely underneath.

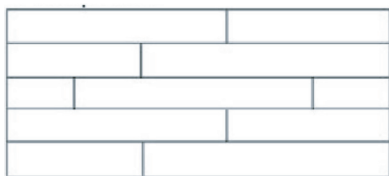
Approved Underlayment Padding: No underlayment padding is required for this product. If you choose to use a additional underlayment we require an underlayment that is no more than 1.5mm in thickness.

Expansion Space/T-molding Breaks: A minimum 1/2" expansion space must be place between the flooring and all walls and fixed objects. AT-molding must be installed to break up continuous runs exceeding 30' in width and in length. Gapping and buckling can develop if expansion space, Tmoldings, and temperature requirements are not followed.

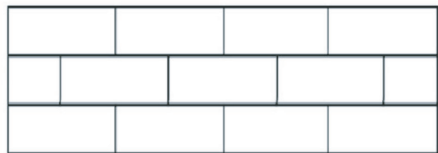
BOARD PLACEMENTS

1. Pictured are two common options for board placements and best overall appearance

(a) Start with a full plank for the first row, a 1/2 plank for the second row and a 1/3 plank for the third row, repeat process until completion.



(b) or start with a full plank for the first row, a 1/2 plank for the second row and a full plank for the third row, repeat process until completion.



INSTALLING PLANKS

The tongue side of the plank shall face the starting wall, groove side facing outwards. Begin laying planks on the left side of the starting wall and work to the right side.

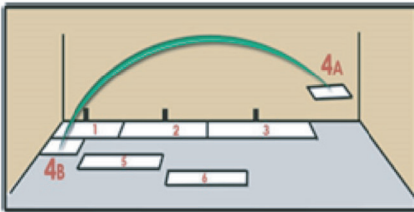


THE FIRST ROW

1. Start in the left hand corner placing 'l,' spacers between the wall and the flooring. Install the butt ends of the next plank into the end of the previous plank. Continue this until row is complete.

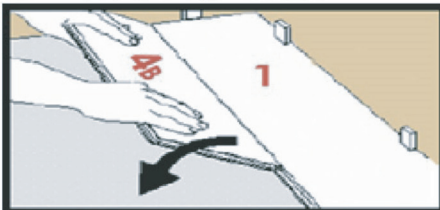


2. The last plank in the row needs to be cut to fit while still leaving a $\frac{1}{2}$ " gap between the last plank in each row and the wall. The planks that begin and end a row should be at least 6' long. The remainder of the plank cut to end the first row and be used to start the second row.

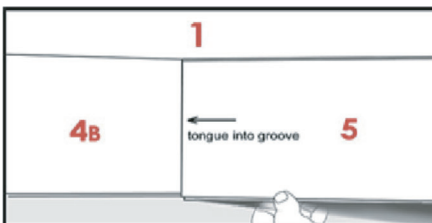


SECOND AND CONSECUTIVE ROWS

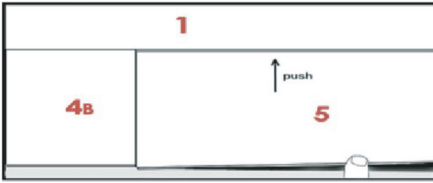
1. Position the first plank of the second row with short end-side against the wall and the long side along the planks of the first row. Remember to place a $\frac{1}{2}$ " spacer between the wall and the plank. Fit the long side of the plank into the first row. Insert the tongue side into the groove side at approximately a 45° angle until planks lock together. Gradually lower the plank down flat until the joint closes.



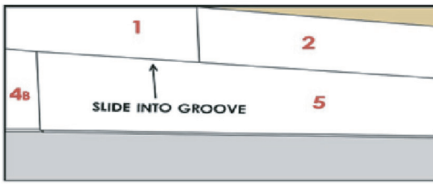
2. Install the second plank in the second row by inserting the short side tongue into the previously installed first plank short side groove.



3. Align the plank so the long side tongue tip is positioned just over the groove lip of the plank in the first row.

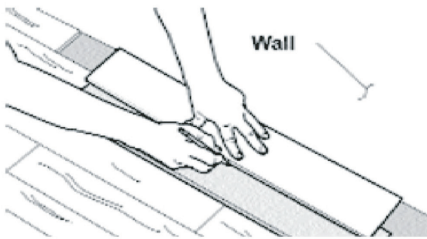


4. Using gentle force and at a 20-30 degree angle, push the long side tongue into the groove of the adjoining plank by sliding along the short side seam. You may need to lift the plank to the left of it slightly to allow for the "sliding" action. Repeat steps 1 to 4 until come to the last row.

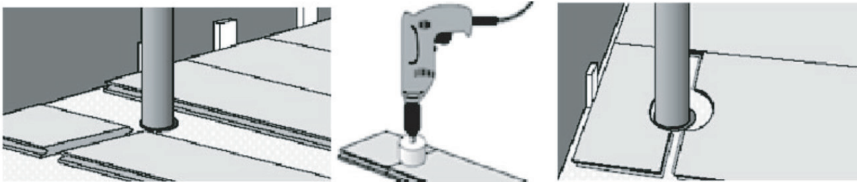


LAST ROW

The last row of planks may need to be cut lengthwise to obtain the proper width. The width of the last row shall not be less than 2". Align a plank that has been cut to the correct length exactly over the first plank in the previous row. Lay a scrap plank over top of the plank to be cut and mark the distance with a pencil. Cut each plank accordingly. When performing this step, remember to allow for proper spacing between the wall and the last row of planks.



CUTTING AROUND PIPES AND FIXED OBJECTS



Expansion Space: A minimum 1/2" expansion space is required around all fixed objects and walls.

AFTER INSTALLATION & MAINTENANCE

- Sweep up all trash and debris.
- Save extra material and store it in a climate-controlled space.
- Save one box label in case future product is needed for repairs.
- When moving furniture back onto the flooring, make sure to properly protect the flooring. It is best not to slide furniture in place.
- Use felt protectors on furniture legs.
- Clean floor with approved vinyl floor cleaners.
- Avoid sun exposure to the flooring for long periods of time. Close blinds and drapes during peak sunlight hours. Excessive heat can cause expansion and warping of the product.
- Caster wheels should have wide rubber casters. Protective mats are required under rolling chairs. DO NOT use plastic mats. Use non-staining mats.
- Use walk off mats at entrance doors to prevent grit and dirt from being tracked on the floor.
- Sweep or vacuum the floor regularly. Use a vacuum designed for hard surface floors that do not have a beater bar. The beater bar should be turned OFF.
- DO NOT use polishes, waxes, harsh chemicals such as bleach or abrasive cleaners on this floor.
- Wipe up spills immediately with a damp cloth.



401 Jones Street, Dalton, GA 30720 USA | 800-872-8426 | www.choiceflooring.com