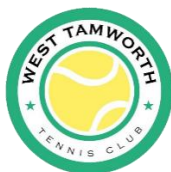


CONDITIONS OF PLAY

1. The committee shall have control of the tournament with the discretion to combine or cancel events.
2. The tournament shall be conducted in accordance with the laws of the game and the regulations adopted by Tennis NSW, except as altered by the conditions.
3. Once play has commenced, any decision regarding refunds due to wet weather will be made solely at the discretion of the Tournament Director.
4. Players are required to be financial members of a State Seniors' Association, or they will need to join Tennis Seniors NSW by completing the application form at <http://www.tsnsw.com.au/membership>. Copies will be available from the tournament desk or on the web page.
5. Entries must be made on the prescribed form, scan or photocopy.
6. Entry fee/s to be paid at clubhouse before first match - EFTPOS available.
7. Age as at 31st December 2026.
8. All players to wear appropriate footwear and attire.
9. Play will commence at 8am Saturday, 30th May 2026 at WTTC.
10. Players may compete in only one event per time slot.
11. Prizes for winners and runners-up in all events.
12. If not a Tennis Seniors Member, a temporary \$10.00 weekend fee applies.



Tournament Director - Brian Brooking M: 0417 614 054

West Tamworth Tennis Club

PO Box 3010 WEST TAMWORTH NSW 2340

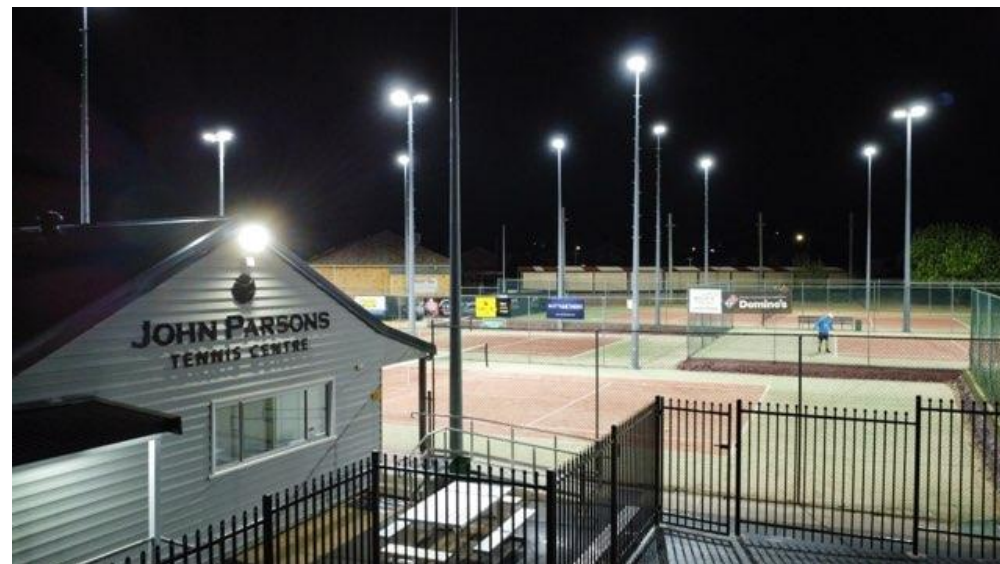
E: westtamworthtennis@outlook.com



25th West Tamworth Tennis Club

Seniors/30+ Tournament

30th & 31st May 2026



We invite you to join us at the

John Parsons Tennis Centre, Belmore Park, West Tamworth



Entries close Sunday 24th May 2026

ROUND ROBIN :: \$20.00 PER EVENT PER PLAYER :: DOUBLES ONLY :: PAY ON THE DAY/NO PREPAY

	Event #	Events	Partner's Name	\$20.00
Saturday 8.00am	1	"A" Men's Doubles	Partner not required	\$
	2	"B" Men's Doubles		\$
	3	"A" Ladies Doubles		\$
	4	"B" Ladies Doubles		\$
Saturday 12 noon	5	30-49 Men's Doubles		\$
	6	50-64 Men's Doubles		\$
	7	65+ Men's Doubles		\$
	8	30-49 Ladies Doubles		\$
	9	50-64 Ladies Doubles		\$
	10	65+ Ladies Doubles		\$
Sunday 8.00am	11	60-80-90 Combined Men's Doubles		\$
	12	100-110-120 Combined Men's Doubles		\$
	13	130+ Combined Men's Doubles		\$
	14	60-80-90 Combined Ladies Doubles		\$
	15	100-110-120 Combined Ladies Doubles		\$
	16	130+ Combined Ladies Doubles		\$
Sunday 12 noon	17	"A" Division Combined Mixed Doubles		\$
	18	"B" Division Combined Mixed Doubles		\$

Total Fee Due \$

First Name _____
 Last Name _____
 DOB / / Age* _____
 Address _____

 Mobile/Phone _____
 Email _____
 ID # _____
 UTR (if known) _____
 TSNSW# _____

**see #6 in conditions of play (over)*

Please join us Saturday evening at 6.00pm for a
 roast meal and to share stories and laughs.
 Cost is \$25.00 per person.
 Please tick this box if you would like to attend.

**BREAKFAST AVAILABLE BOTH MORNINGS
 FROM 7.30AM**

We gratefully acknowledge the ongoing generous assistance of the West Tamworth Tennis Club by the following sponsors and supporters:

**4 Seasons Pest Control Apollo Blinds Autobarn First Aid Tamworth
 Lloyds SignCo MJT Partners Tamworth Fencing Westdale Meats WaterWorks**

Also, we appreciate the dedication of our committee members and volunteers in enabling us to hold events such as this one.

