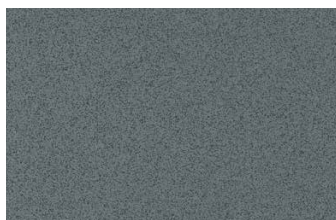




# ARGELITH CERAMIC TILES, INC.

## BUICK MOTOR COMPANY APPROVED PRODUCTS



### **Titan Gray** **Fully Vitrified**

Size (inch): 12" x 12"  
Size (mm): 298 x 298  
Thickness: 5/8"  
Workshop and Service Drive  
Surface: R10  
Optional matching cove base skirting



### **Anthracite** **Fully Vitrified**

Size (inch): 12" x 12"  
Size (mm): 298 x 298  
Thickness: 5/8"  
Workshop and Service Drive  
Surface: R10  
Optional matching cove base skirting



### **Looking for a unique color or custom design?**

Explore our selection of standard and custom colors online. With minimum order quantities, the possibilities are endless! Our advanced technology brings your vision to life, whether it's a specific color or a personalized print. Contact us to make it happen!

### **Technical Values**

Water Absorption in Weight %	+/- 0.2%
Dimensional Accuracy	+/- 0.2%
Resistance against Acids and Alkalis	Fulfilled, Class LA
	Fulfilled, Class HA
Resistance against Stains	Class 5
Modulus of Rupture in N/mm <sup>2</sup>	42.8 +/- 1.0
Breaking Strength for Thickness > 7.5 mm in N	5,986 +/- 127
ANSI 326.3 Declared Product Use Classification for R10	Interior, Wet Plus (IW+), Oils/Greases (O/G)
ANSI 326.3 Declared Product Use Classification for R11	Interior, Wet Plus (IW+), Exterior Wet (EW), Oils/Greases (O/G)

All testing performed per DIN EN 144 11 - App.G specifications. Most recent test reports are available upon request.

**Argelith Ceramic Tiles, Inc.**  
**Christian Nierenkoether**  
**Phone: (630) 444-0665**  
**Mobile: (630) 746-9668**  
**christian@argelithusa.com**  
**www.argelithusa.com**

Tile Size Clarification: Please note that the listed tile sizes, such as 4"x8", represent nominal dimensions. Actual tile sizes may vary slightly due to the natural characteristics of ceramic manufacturing. For precise measurements and detailed product specifications, please visit our website or contact our customer service team. Architects' choice of grout - gray color recommended.

R10 is a smoother, easier to clean surface typically used in service shop areas. R11 has a higher level of texture for slip resistance and is typically used in service reception areas. The names of car brands mentioned in this document are used solely for informational purposes to identify the products that are recommended or specified for use with these brands. Argelith Ceramic Tiles, Inc. is not affiliated with, endorsed by, or sponsored by any of the car brands listed. All trademarks and brand names are the property of their respective owners.