

ESSENTIALS SERIES MONOCHROME DOCUMENT SYSTEMS

A smart design that helps drive efficiency.

From media handling to workflow and collaboration, the Essentials Series delivers the features businesses need to get the job done.

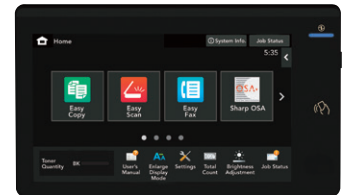
Built for today's workstyles, these monochrome document systems feature an intelligent design that offers seamless, **secure collaboration while supporting sustainability** in modern office environments.

A Smart MFP That Drives Efficiency Features like **AI assisted scanning** with auto skew correction and image format detection ensure scanned documents are processed correctly.

Easy to Operate An **intuitive touchscreen display** that is built on an award-winning user interface is easy to navigate, enabling users to execute their jobs quickly and efficiently.

Modern Design Elegant exterior design offers a contemporary color scheme, soft-close paper drawers, and easy-roll casters to make this series a **perfect fit for any office environment**.

Comprehensive Data Security The Essentials Series utilizes leading, **multi-layered security features** to help ensure your document data and personal information remains safe.



10.1" (diagonally measured) customizable touchscreen display.



Pivoting touchscreen adjusts instantly for the perfect viewing angle.



Inner Folding Unit option offers a variety of fold patterns, including c-fold, z-fold and others.



100-sheet RSPF scans documents at up to 80 images per minute.

- **100-sheet reversing** single-pass feeder scans originals at speeds of up to 80 images per minute.
- Flexible paper handling supports **media up to 300 gsm and COM-10** envelopes from the standard paper drawer.
- Inner Folding Unit option offers a **variety of fold patterns**, including c-fold, z-fold and others.
- **Smart controller design** ensures maximum device uptime with self-healing features that remediate CPU errors and automatic firmware updates that keep the device current.
- Provides seamless access to Microsoft services with **Microsoft Entra ID** in Azure native environments.
- Supports **Synappx Manage**, a cloud-based device management solution that enables collaborative visibility with your service providers—helping to reduce response time and business disruption.
- **Intuitive touchscreen** display is easy to navigate, enabling user to execute their jobs quickly and efficiently.
- Collaborate with remote workers using **popular cloud services**, such as Microsoft Teams, Google Drive™, Dropbox and others.*
- **Leading security features** such as BIOS Integrity Check with self-recovery, Firmware Attack Prevention and Intrusion Detection help safeguard against potential threats.
- Supports **Microsoft Modern Print Platform** including Universal Print and driverless printing with the Sharp Print Support Application (PSA).
- Designed with approximately **50% recycled** plastic and offers among **the lowest TEC value** and stand-by power in its class.

*Some features require optional equipment and/or software.

SPECIFICATIONS BP-51M26/51M31/51M36/51M45

Main Specifications

BP-51M26/51M31/51M36/51M45	Base models include multitasking controller, 100-sheet RSPF, PCL 6 printing system, network scanning, auto duplexing, 1 x 550-sheet paper drawer, 100-sheet bypass tray.		
Type	Monochrome multi-function digital document system		
Display	10.1" (diagonally measured) color dot matrix high-resolution touch panel tilting display. 1,024 x 600 dots (W-SVGA)		
Functions	Copy, print, network print, network scan, document filing and fax ¹		
Copy System	Dry electrostatic transfer/Dual component developer/Magnetic brush development/OPC drums/Pad fusing/White LED exposure		
Originals	Sheets and bound documents		
Max. Original Size	11" x 17"		
Output Size	Min. 5½" x 8½", Max. 12" x 18"		
Copy Speed	26/31/36/45 ppm (8½" x 11")		
Multiple Copy	Max. 9,999 copies		
First Copy Time (In Seconds) ²	BP-51M26	BP-51M31	BP-51M36/51M45
	Platen Glass: 6.2	5.4	4.5
	RSPF: 7.7	7.4	6.7
Warm Up Time (In Seconds)	BP-51M26/51M31: 16, BP-51M36/51M45: 14 (power button); BP-51M26/51M31: 29, BP-51M36/51M45: 27 (main switch)		
Magnification	25% to 400% in 1% increments		
Original Feed	100-sheet RSPF with original size detection		
Scan Speed	Copy: Up to 80 ipm (Mono) Scan: Up to 80 ipm (Mono/Color)		
Original Sizes	5½" x 8½", 8½" x 11", 8½" x 11" R, 8½" x 14", 11" x 17"		
Paper Capacity	Standard: 650 Sheets, Maximum: 6,300 Sheets		
Paper Feed System	Standard: (1) paper drawer 550 sheets (letter/legal/ledger/ statement size) or up to 50 envelopes (max. height: 25 mm), 100-sheet (or 20 envelope) bypass tray. Optional: Single, double, or triple paper drawer(s) (550, 1,100, or 1,650 sheets), split tandem paper drawers 2,100 sheets (letter) + (1) 550-sheet paper drawer (letter/legal/ledger/ statement size).		
Paper Weights and Types	Paper drawers: 18 lb. bond to 110 lb. cover. Drawer 1: 20-24 lb. bond or Monarch/Com-9/Com-10 envelopes. Split Tandem Drawers: 18 lb. bond to 28 lb. bond or plain, pre-printed, recycled, pre-punched, letterhead and color paper. Bypass tray: 16-28 lb. bond (plain paper), 13-16 lb. bond (thin paper), 28 lb. bond-110 lb. cover (heavy paper), tab paper (letter) and Monarch/Com-10 envelopes. Also label, gloss, preprinted, recycled, pre-punched, letterhead and color paper or OHP film. Standard automatic duplex copying and printing		
Duplexing	Up to 1.6 GHz multi-processor design		
Interface	RJ-45 Ethernet (10/100/1000 Base-T), USB 2.0: 1 host port (front), USB 3.0: 2 host ports; wireless 802.11 a/b/g/n/ac (option)		
Memory	Standard 5 GB copy/print (shared)		
Solid State Drive	128 GB, 512 GB (option)		
Copy Resolution	Scan: 600 x 600 dpi Output: Up to 600 x 600 dpi		
Copy Modes	Monochrome/Grayscale		
Exposure Control Modes	Automatic, Text, Text/Photo, Text/Printed-Photo, Printed-Photo, Photo, Map, Pale-Color Document. Settings: Auto or 9 step manual		
Halftone	256 gradations/2 levels (monochrome)		
Copy Features	Scan-Once Print-Many, electronic sorting, offset-stacking, Auto Paper Selection (APS), Auto Magnification Selection (AMS), Auto Tray Switching (ATS), black-white reversal, blank page skip, book copy, book divide, card shot, center erase, centering, cover pages, dual page copy, edge erase, image edit, image preview, insert pages, job build, job programs, margin shift, mirror image, mixed size original, multi-page enlargement, original count, pamphlet style, proof copy, repeat layout, reserve copy, rotated copy, stamp, stamp custom image, suppress background, tab copy, tab-paper insertion, tandem copy, toner save mode, transparency inserts, watermark, 2-in-1 / 4-in-1 / 8-in-1 multi shot		
Account Control	Up to 1,000 users. Supports user-number authentication via local, LDAP, Active Directory, and Entra ID for copy, print, scan and document management		

Main Specifications (continued)

Output Tray Capacity	Center Exit Tray (Main): 400 sheets (face down) Job Separator (Upper Tray): 100 sheets (face down) Right Side Exit Tray: 120 sheets (face down)
Cloud Supported Services ¹	Google Drive, Box, OneDrive for Business, SharePoint Online, Exchange Online, Dropbox, Gmail™, MS Teams, MFP Voice
Network Protocols	TCP/IP (IPv4, IPv6, IPsec), HTTP/HTTPS, IPP/IPP-SSL, FTP/ FTPS, SNMPv3, SMTP/SMTP-SSL, POP3/POP3-SSL, LDAP/ LDAP-SSL, 802.1x for Windows and Unix. ¹
Network and Data Security	Includes IP/MAC address filtering, protocol filtering, port control, user authentication (local/LDAP/Active Directory/Entra ID), WPA3™ wireless, TLS 1.3 Encryption, Kerberos support ¹
Firmware Management	Flash ROM with local (USB), network update capability and firmware update 1 to N with Sharp Remote Device Manager, Synappx Manage (available for download)
Device Setup	Web-based management with user/admin level login
Service/Functions	Remote Front Panel, remote access to service logs and click counts
Accessibility Features	Free stop tilting front panel, adjustment of key touch sound and speed, document feeder free stop, job programs, remote front panel, universal grip for paper trays, disable screen timeout, and voice interaction
Environmental Standards	International Energy Star Program Ver. 3.0, European RoHS, Blue Angel
Power Source	110-127 V AC, 60 HZ, 15 A receptacle
Power Consumption	1.5 kW or less
Weight	Approx. 139 lbs.
Dimensions	Approx. 24" (w) x 26" (d) 33" (h)
Network Printing System	
PDL	Standard PCL 6, optional Adobe PostScript 3
Resolution	600 x 600 dpi
Print Speed	26/31/36/45 pages per minute (8½" x 11")
Print Drivers	Windows 11, Windows Server 2016/2019/2022/2025, Windows PPD, macOS®10.15 - 15, UNIX®, Linux®, Universal Print (Microsoft), Sharp Universal Print Driver
Modern Print Platform	Microsoft Universal Print, Sharp Print Support App (PSA), Internet Printing Protocol (IPP)
Mobile Printing ¹	Android™ printing framework (Sharp Print Service Plugin), Sharpdesk Mobile, Apple AirPrint
Print Features	Auto configuration, serverless print release, confidential print, continuous printing, document control, document filing, duplex printing, electronic sorting, hidden pattern print, image rotation, job bypass print, job retention, layout print, margin shift, multiple pamphlet, network tandem print, N-up printing, offset stacking, pamphlet style, poster print, proof print, print and send, tab paper print, tab printing, transparency inserts, tray status, user authentication single sign-on, watermarks, zoom print
Direct Printing	File Types: TIFF, JPEG, PCL, PRN, TXT, and PNG. Optional: PDF, Compact PDF, Encrypted PDF, PS, DOCX, XLSX and PPTX. Methods: FTP, SMB, Web page, Email and USB memory. Adobe Embedded Print Engine support for PDF file formats.
Resident Fonts	80 outline fonts (PCL), 139 fonts (PS) (Host)
Interface	RJ-45 Ethernet 10/100/1000 Base-T, USB 2.0, optional wireless 2.4/5 GHz
Operating Systems and Environments	Windows 11, Windows Server 2016/2019/2022/2025, Chrome OS™, macOS 10.15 - 15, Unix®, Linux®, Citrix®, and SAP device types ¹
Printing Protocols	LPR, IPP, IPPS, Raw TCP (port 9100), FTP, POP3, POP3S, HTTP, HTTPS, and LPR and LPD for Unix

Network Scanning System

Scan Modes	Standard: Color, monochrome, grayscale
Max. Original Size	11" x 17"
Optical Resolution	600 dpi
Output Modes	600 dpi, 400 dpi, 300 dpi, 200 dpi, 150 dpi, 100 dpi
Image	Monochrome Scanning: Uncompressed, G3 (MH), G4 (MR/MMR)
Compression	Color/Grayscale: JPEG (high, middle, low) Internet Fax mode: MH/MMR (option)

Network Scanning System (continued)

Image Formats ¹	Monochrome: TIFF, PDF, PDF/A, Encrypted PDF, XPS, Searchable PDF, DOCX, XLSX, PPTX, TXT, and RTF. Color/Grayscale: TIFF, JPEG, PDF, PDF/A, Compact PDF, Encrypted PDF, XPS, Searchable PDF, DOCX, XLSX, PPTX, TXT, and RTF. Internet Fax: TIFF-FX, TIFF-F, TIFF-S
Scan Destinations ¹	Email, Desktop, FTP, Folder (SMB), USB, Internet fax (option), Super G3 fax (option), Teams Folder, OneDrive, Box, Dropbox
One-touch	Up to 2,000 (combined scan destinations)
Group Destinations	Up to 500
Programs	48 (combined)
Max. Jobs	Up to 100
Email Connect	Standard Gmail connector, standard Exchange connector
Scanning Protocols	HTTP/HTTPS, FTP/FTPS, SMTP/SMTP-SSL/ESMTP, SMB, POP3, LDAP, S/MIME
Software ¹	Sharpdesk Mobile (download), Synappx (download)

Optional Equipment

BP-70ABD	Deluxe Copier Cabinet Base
BP-DE12	Stand/1 x 550-sheet Paper Drawer
BP-DE13	Stand/2 x 550-sheet Paper Drawers
BP-DE14	Stand/3 x 550-sheet Paper Drawers
BP-DE15	Stand/1 x 550 + 2,100-sheet Split Tandem Paper Drawers
BP-LC10	3,000-sheet Large Capacity Cassette (letter, requires BP-DE12/DE13/DE14/DE15)
MX-LT10	Long Paper Feeding Tray
BP-FN18	50-sheet Staple Inner Finisher
BP-FN13	1K Stacking 50-sheet Staple Finisher
BP-FN14	1K Stacking 50-sheet Staple/Saddle Stitch Finisher
BP-FN15	3K Stacking 65-sheet Staple Finisher
BP-FN16	3K Stacking 65-sheet Staple/Saddle Stitch Finisher
BP-FD10	Inner Folding Unit
BP-RB10	Paper Pass Unit
MX-PN14B	3-Hole Punch Unit (requires BP-FN18)
MX-PN15B	3-Hole Punch Unit (requires BP-FN13/14)
MX-PN16B	3-Hole Punch Unit (requires BP-FN15/16)
BP-SC10	Staple Cartridge for BP-FN18
BP-SCX1	Staple Cartridge for BP-FN13
AR-SC2	Saddle-stitch Staple Cartridge for BP-FN14
MX-SC11	Staple Cartridge for BP-FN15/16
MX-SC12	Saddle-stitch Staple Cartridge for BP-FN16
BP-TR12	Right Side Exit Tray
MX-TR20N	Job Separator Tray
BP-TU11	Center Exit Tray
BP-UT10	Utility Table
BP-EB10	Wireless LAN Adapter (includes Bluetooth)
MX-EB19L	Compact PDF Kit
MX-EB20L	OCR Expansion Kit
BP-FX11	Fax Expansion Kit
MX-FWX1L	Internet Fax Expansion Kit
MX-PF10	Bar Code Font Kit
MX-PK13L	Adobe PostScript 3 Kit
MX-PU10L	Direct Print Expansion Kit
MX-AMX1L	Application Integration Module
BP-AM10L	Application Communications Module
BP-AM11L	External Account Module
BP-SD10	High Capacity SSD (512 GB)
BP-VD10L	Virus Detection Kit
BP-FR12UL	Data Security Kit (HCD cPP v1.0e compliant)
DVENDFSV	Generic Vendor Interface Kit

Supplies

BP-N7700	Toner Cartridge
BP-NV700	Developer
BP-DR700	Drum
BP-HB701	Toner Collection Container

¹ Some features require optional equipment. See your local dealer.

² May vary depending on product configuration, machine settings and operating and/or environmental conditions.

SHARP

SHARP ELECTRONICS CORPORATION
100 Paragon Drive, Montvale, NJ 07645
1-800-BE-SHARP • www.sharpsusa.com

Design and specifications subject to change without notice.



SYNAPPX



Qualcomm® DirectOffice™



©2025 Sharp Electronics Corporation. All rights reserved. Sharp, Sharp OSA, Sharpdesk, My Sharp, and all related trademarks are trademarks or registered trademarks of Sharp Corporation and/or its affiliated companies. Microsoft, Active Directory, Excel, Microsoft 365, Microsoft Teams, OneDrive, PowerPoint, SharePoint, Windows, Microsoft Entra, and Windows Server are trademarks of the Microsoft group of companies. Android, Gmail, Chrome OS, and Google Drive are trademarks or registered trademarks of Google LLC. Adobe and PostScript are either registered trademarks or trademarks of Adobe in the US and/or other countries. Qualcomm DirectOffice is a product of Qualcomm Technologies, Inc. and/or its subsidiaries. Qualcomm is a trademark of Qualcomm Incorporated, registered in the United States and other countries. DirectOffice is a trademark of CSR Imaging US, LP, registered in the United States and other countries, used with permission. AirPrint is a trademark of Apple Inc. Bitdefender is a trademark or registered trademark of Bitdefender SRL. All other trademarks are the property of their respective owners.