

QUALITY INCLUDED FEATURES

EVERY ONE OF THESE EXCEPTIONAL FEATURES IS INCLUDED

LUXURY APPOINTMENTS

- Dramatic 9-foot second floor ceilings
- Designer style insulated Front door with sidelights, lighted front door chime, and front door security hardware
- Insulated garage door w/ glass upper panel
- Walk-in closet in Owner's Bedroom
- Gas Heating and Cooking
- Convenient laundry with washer and gas dryer hook-ups
- Easy care LVP flooring in foyer, kitchen, dining living room and powder room in a choice of decorator colors
- "One-piece" easy care vinyl in hall bath laundry and utility areas in a choice of decorator colors
- Custom millwork details include 3 1/2" baseboard and 2-1/2" casing around door trim
- Two panel, smooth finish, interior doors with lever handles
- Decorator quality lighting fixtures
- Deluxe wall-to-wall carpeting in bedrooms and family room in choice of decorator colors
- Ventilated vinyl shelving in all closets
- Professionally managed association with lawn care & snow removal (consult sales manager for details)

THOUGHTFULLY DESIGNED KITCHENS & BATHS

- Furniture quality 36" overhead cabinets, with crown molding, and seating island
- Granite kitchen countertop in choice of colors with stainless steel under mount single bowl sink and single lever faucet
- Pantry (per plan)
- Self-cleaning free standing oven/range, dishwasher, microwave/hood with hood vented to the outside and food waste disposal
- Owner's bath with ceramic floors. 5' fiberglass shower pan with 3-piece walls, and comfort height vanity
- Fiberglass tub with 3-piece walls in hall bath with vanity
- Cultured marble bath countertops, w/single-lever faucets, anti-scald shower diverter and vented exhaust fan

QUALITY CONSTRUCTION

- Low maintenance vinyl siding using professionally coordinated Premium color schemes
- Stone Front elevations
- Composite decks with white vinyl railings
- Metal Porch Roofs
- 30-year architectural roof shingles
- Fully sodded home site with professionally coordinated landscaping
- One car garage door with opener
- PEX plumbing system
- 7/16" OSB exterior sheathing
- Engineered wood roof trusses
- Pre-wired for 1 cable and 1 data line (one location)
- Concrete driveway and service walks
- 2 exterior hose bibs
- 3 exterior GFI electrical outlets
- Hard-wired smoke and CO2 detectors w/ battery back-up
- Public water and sewer
- Underground utility lines
- 5-year warranted termite treatment

NJ ENERGY STAR HOMES PROGRAM

- High efficiency cooling system
- Natural gas heating system
- Programmable thermostats
- Energy efficient tankless water heater
- Upgraded 200-amp service
- Insulated vinyl single hung tilt-in windows and sliding patio door with Low-E, argon filled glass with screens
- R-60 insulation in attic ceilings
- R-21 insulation in exterior walls
- Each home designed, inspected, tested, and certified by NJ's leading energy consultant

DEFINED 10-YEAR HOME WARRANTY PROGRAM Builder shall have the right to make substitutions of comparable materials, brands and/or equipment.



HOVNANIAN
Four Generations of Building Excellence



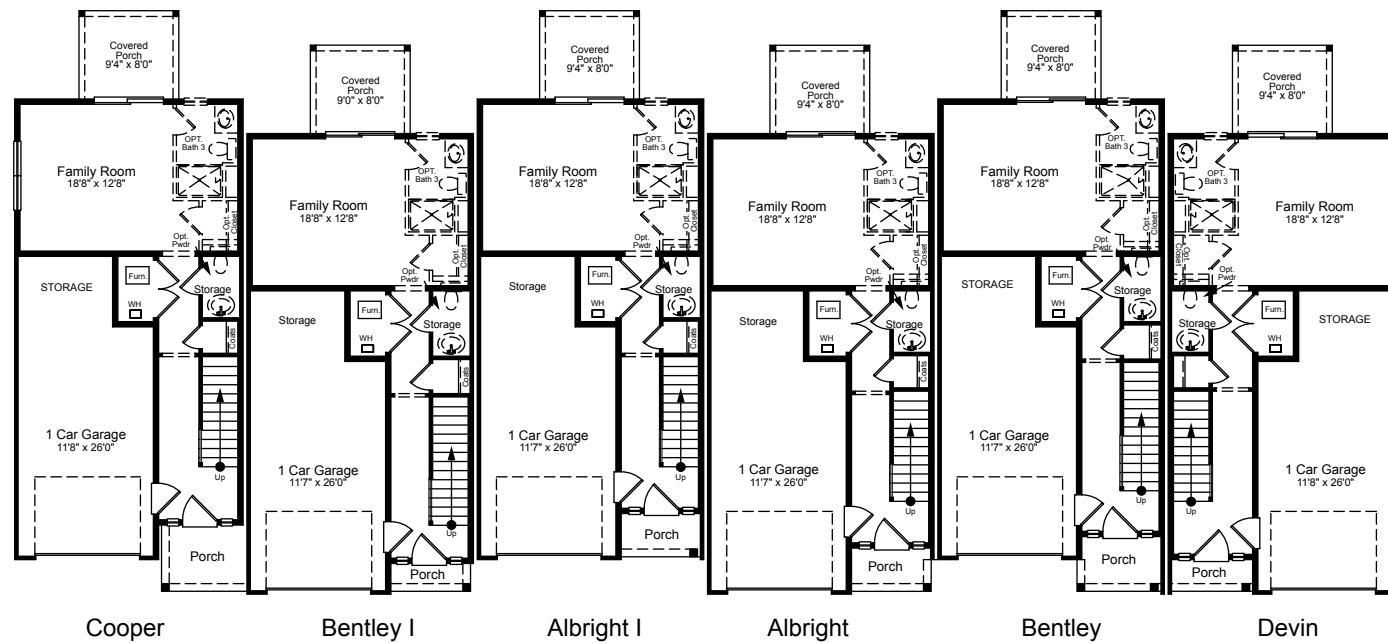
Ask about our
Customer First™ Program

856.235.8444 | Sales Office: 856.235.6912 | www.HOVhomes.com | 900 Birchfield Drive | Mount Laurel, NJ 08054

LITTLE POND

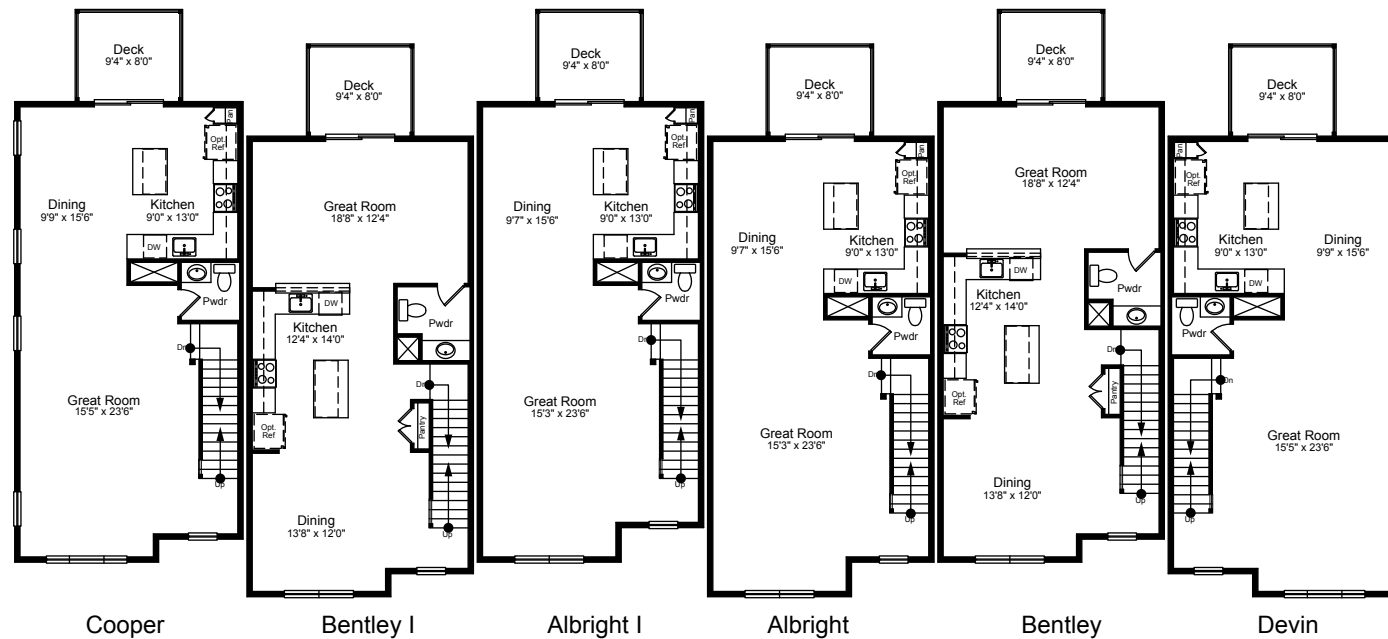


LITTLE POND
by J.S. Hovnanian and Sons



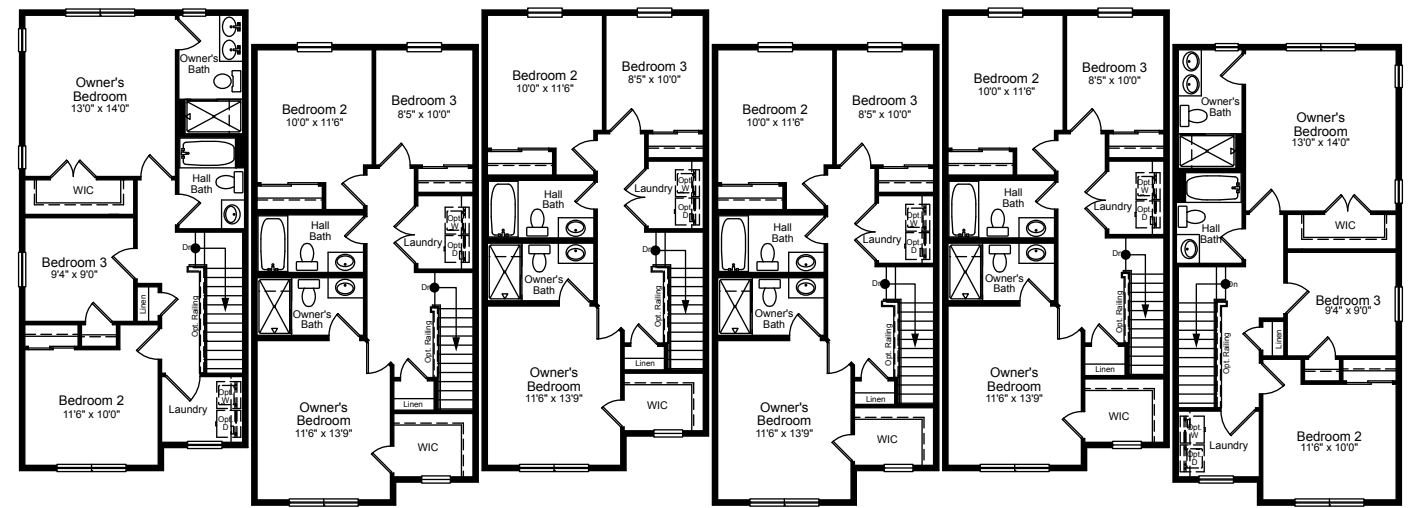
Cooper Bentley I Albright I Albright Bentley Devin

Lower Level



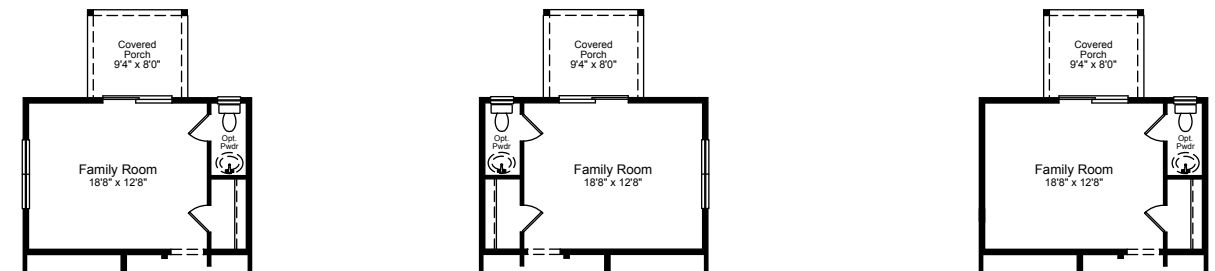
Cooper Bentley I Albright I Albright Bentley Devin

First Floor

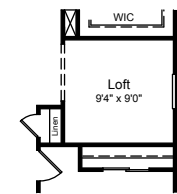
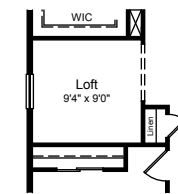


Cooper Bentley I Albright I Albright Bentley Devin

Second Floor



Opt. Powder At Family Room - Cooper Opt. Powder At Family Room - Devin Opt. Powder At Family Room - Bentley/Albright



Opt. Loft In Lieu of Bedroom 3 Cooper Opt. Loft In Lieu of Bedroom 3 Devin

LITTLE POND



1894 to 1932 SQUARE FEET | 3 BEDROOMS | 2 1/2 BATHS | 1 CAR GARAGE, DECK, PATIO
 Cover Renderings are Artist's Conceptions. All dimensions are approximate and subject to field variation. Floor plans and dimensions are subject to errors and omissions. Purchasers must review detailed architectural drawings available in the sales office to ensure accuracy and understanding of home chosen.

