

THE WOODS  
AT  
HIDDEN MILL

*by J.S. Hovnanian & Sons*

Contact 856-235-7416 | [www.hovhomes.com](http://www.hovhomes.com)

THE WOODS  
AT  
HIDDEN MILL

by J.S. Hovnanian & Sons

The Abigail

The Bianca

The Carmelita

The Diana  
W/ LOFT

The Diana  
W/ LOFT

The Elizabeth  
W/ LOFT



Contact 856-235-7416 | [www.hovhomes.com](http://www.hovhomes.com)

BUILDING I

1706 to 2284 SQUARE FEET | 2-3 BEDROOMS W/LOFTS | 2 ½ BATHS | 1 CAR GARAGE

*Cover Renderings are Artist's Conceptions. All dimensions are approximate and subject to field variation. Floor plans and dimensions are subject to errors and omissions. Purchasers must review detailed architectural drawings available in the sales office to ensure accuracy and understanding of home chosen.*

THE WOODS  
AT  
HIDDEN MILL

by J.S. Hovnanian & Sons

The Abigail

The Bianca

The Carmelita

The Elizabeth w/Loft



BUILDING II

Contact 856-235-7416 | [www.hovhomes.com](http://www.hovhomes.com)

1706 to 2284 SQUARE FEET | 2-3 BEDROOMS W/LOFTS | 2 ½ BATHS | 1 CAR GARAGE

*Cover Renderings are Artist's Conceptions. All dimensions are approximate and subject to field variation. Floor plans and dimensions are subject to errors and omissions. Purchasers must review detailed architectural drawings available in the sales office to ensure accuracy and understanding of home chosen.*

THE WOODS  
AT  
HIDDEN MILL

by J.S. Hovnanian & Sons

The Abigail

The Bianca

The Carmelita

The Diana w/Loft

The Diana w/Loft

The Elizabeth w/Loft



Contact 856-235-7416 | [www.hovhomes.com](http://www.hovhomes.com)

1706 to 2284 SQUARE FEET | 2-3 BEDROOMS W/LOFTS | 2 ½ BATHS | 1 CAR GARAGE

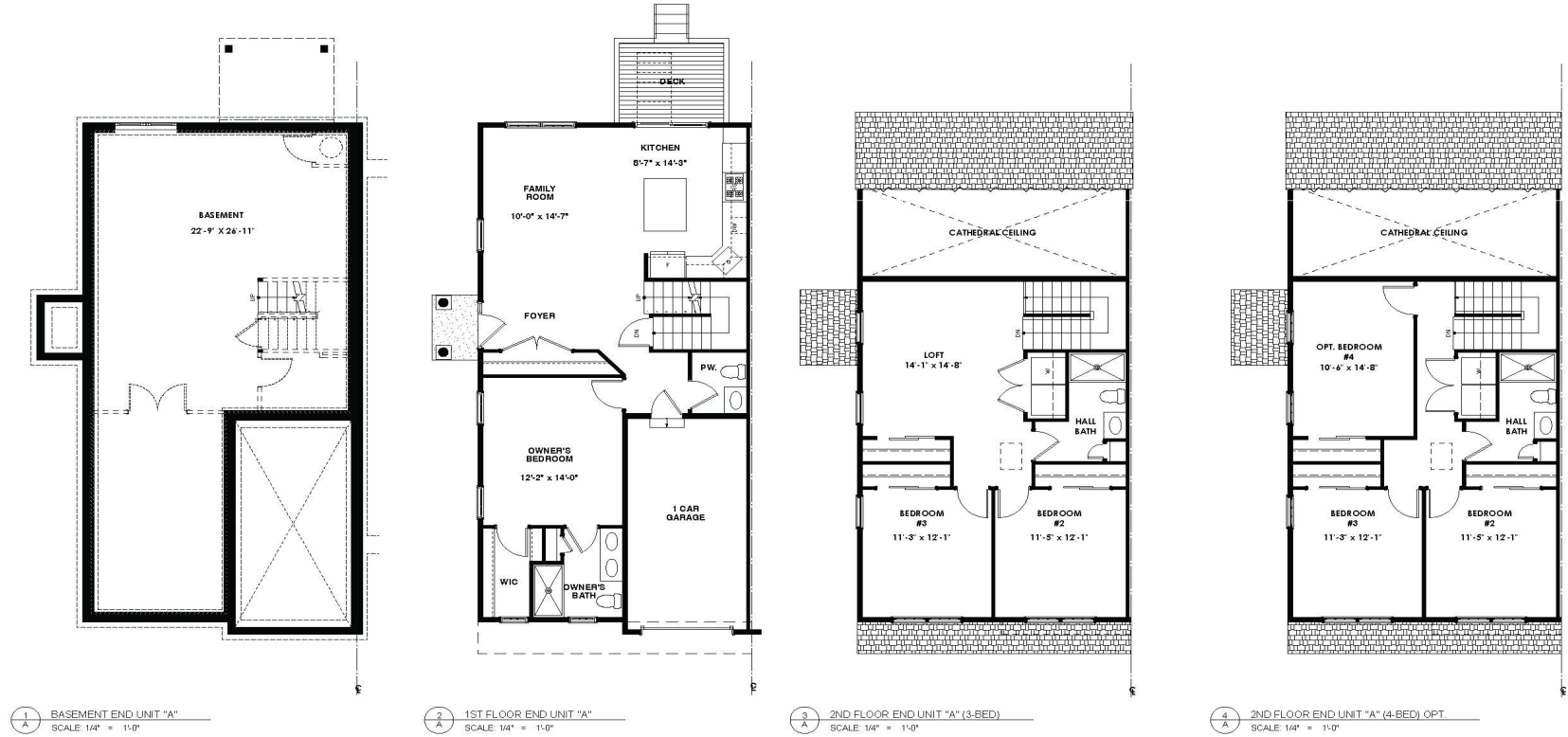
**BUILDING III**

*Cover Renderings are Artist's Conceptions. All dimensions are approximate and subject to field variation. Floor plans and dimensions are subject to errors and omissions. Purchasers must review detailed architectural drawings available in the sales office to ensure accuracy and understanding of home chosen.*

THE WOODS  
AT  
HIDDEN MILL

by J.S. Hovnanian & Sons

**THE ABIGAIL**



HIDDEN MILL TOWNHOMES  
GLOUCESTER TOWNSHIP, CAMDEN COUNTY, NJ  
UNIT "A", ABIGAIL  
3/17/25

ARCHITECTURAL  
ALLIANCE

Contact 856-235-7416 | [www.hovhomes.com](http://www.hovhomes.com)

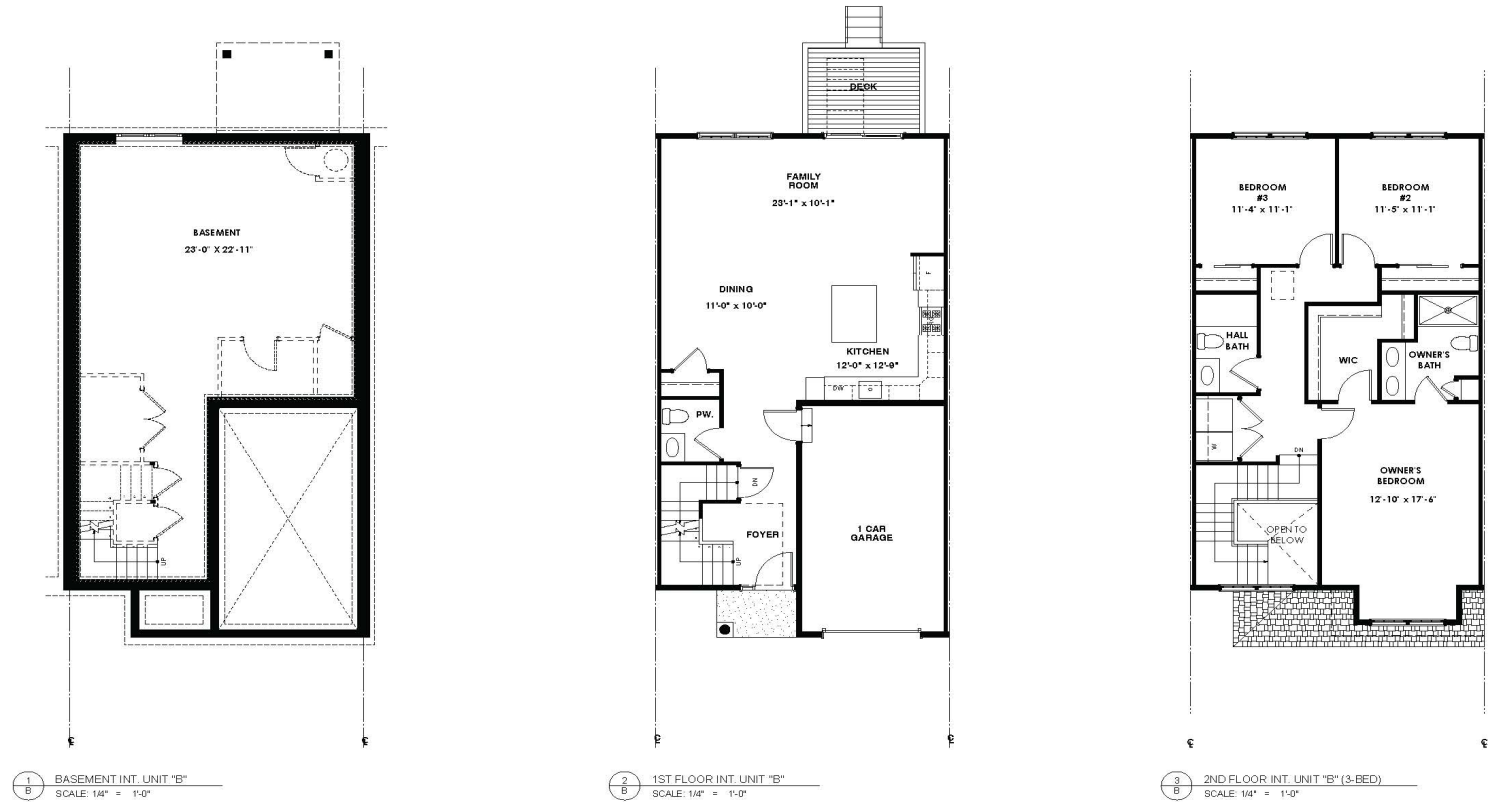
1706 to 2284 SQUARE FEET | 2-3 BEDROOMS W/LOFTS | 2 ½ BATHS | 1 CAR GARAGE

Cover Renderings are Artist's Conceptions. All dimensions are approximate and subject to field variation. Floor plans and dimensions are subject to errors and omissions. Purchasers must review detailed architectural drawings available in the sales office to ensure accuracy and understanding of home chosen.

THE WOODS  
AT  
HIDDEN MILL

by J.S. Hovnanian & Sons

**THE BIANCA**



HIDDEN MILL TOWNHOMES  
GLOUCESTER TOWNSHIP, CAMDEN COUNTY, NJ  
UNIT "B", BIANCA  
8/7/25

ARCHITECTURAL  
ALLIANCE

Contact 856-235-7416 | [www.hovhomes.com](http://www.hovhomes.com)

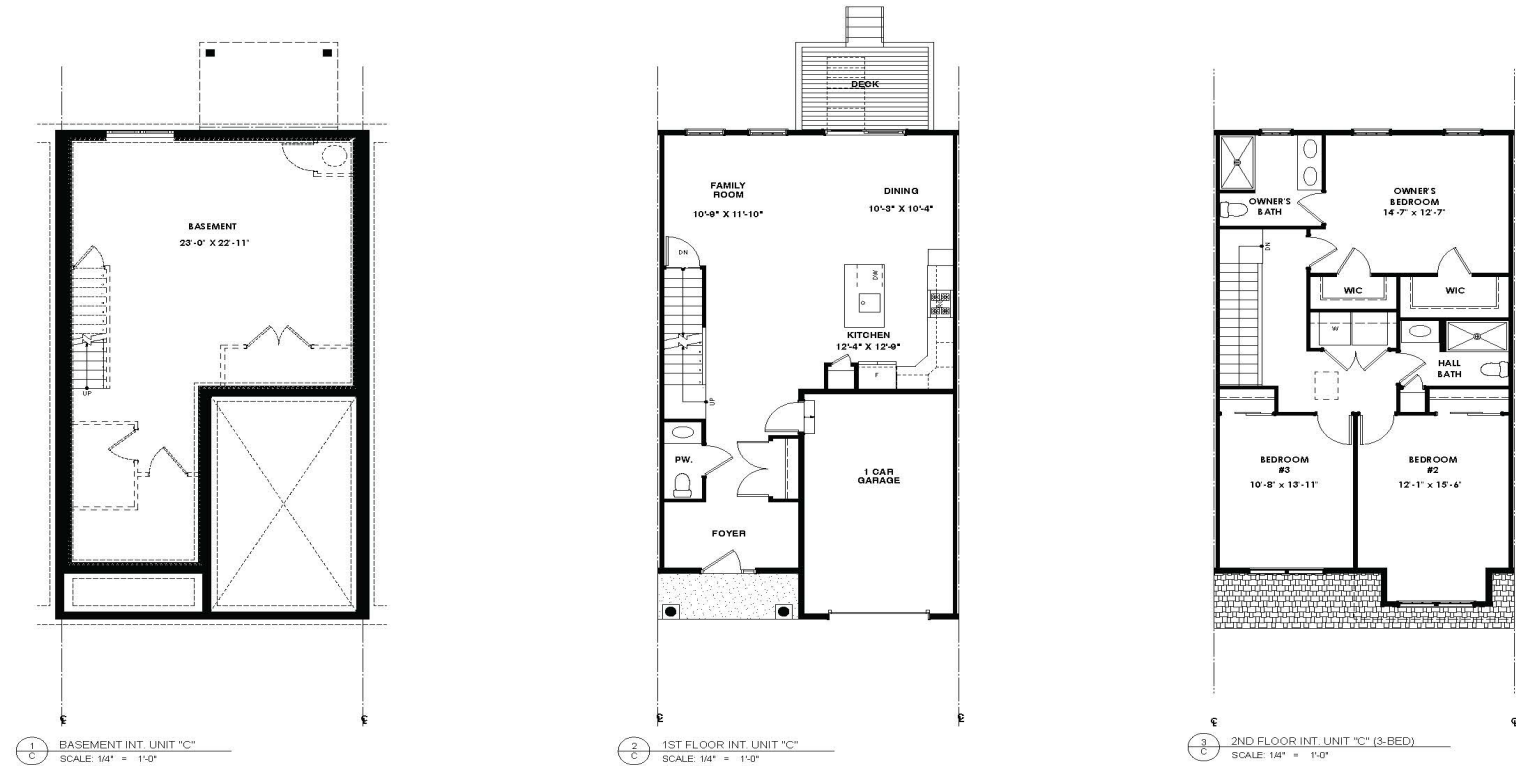
1706 to 2284 SQUARE FEET | 2-3 BEDROOMS W/LOFTS | 2 ½ BATHS | 1 CAR GARAGE

*Cover Renderings are Artist's Conceptions. All dimensions are approximate and subject to field variation. Floor plans and dimensions are subject to errors and omissions. Purchasers must review detailed architectural drawings available in the sales office to ensure accuracy and understanding of home chosen.*

THE WOODS  
AT  
HIDDEN MILL

by J.S. Hovnanian & Sons

**THE CARMELITA**



HIDDEN MILL TOWNHOMES  
GLOUCESTER TOWNSHIP, CAMDEN COUNTY, NJ  
UNIT "C", CARMELITA  
8/7/25

ARCHITECTURAL  
ALLIANCE

Contact 856-235-7416 | [www.hovhomes.com](http://www.hovhomes.com)

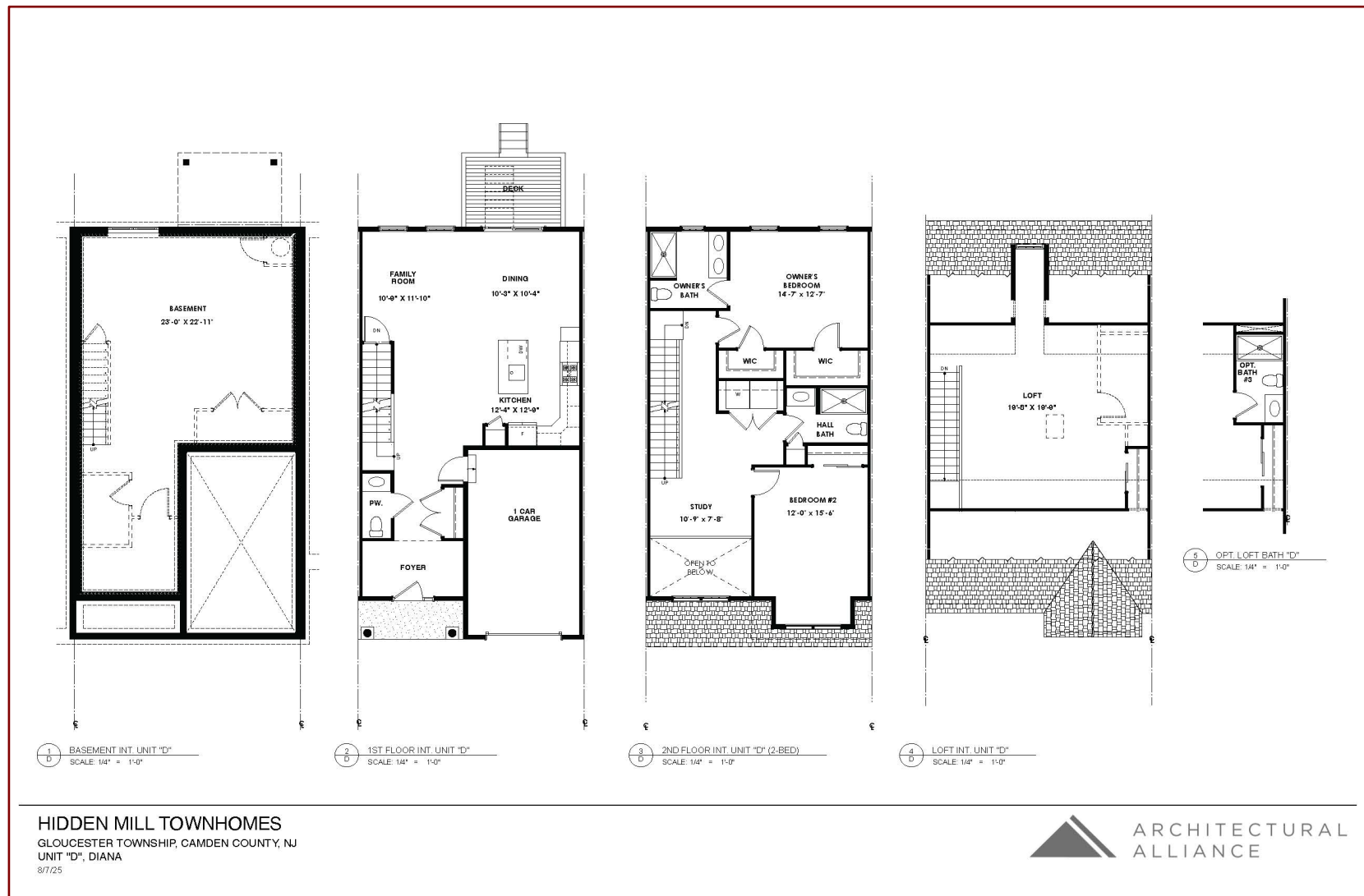
1706 to 2284 SQUARE FEET | 2-3 BEDROOMS W/LOFTS | 2 ½ BATHS | 1 CAR GARAGE

*Cover Renderings are Artist's Conceptions. All dimensions are approximate and subject to field variation. Floor plans and dimensions are subject to errors and omissions. Purchasers must review detailed architectural drawings available in the sales office to ensure accuracy and understanding of home chosen.*

THE WOODS  
AT  
HIDDEN MILL

by J.S. Hovnanian & Sons

THE DIANA



Contact 856-235-7416 | [www.hovhomes.com](http://www.hovhomes.com)

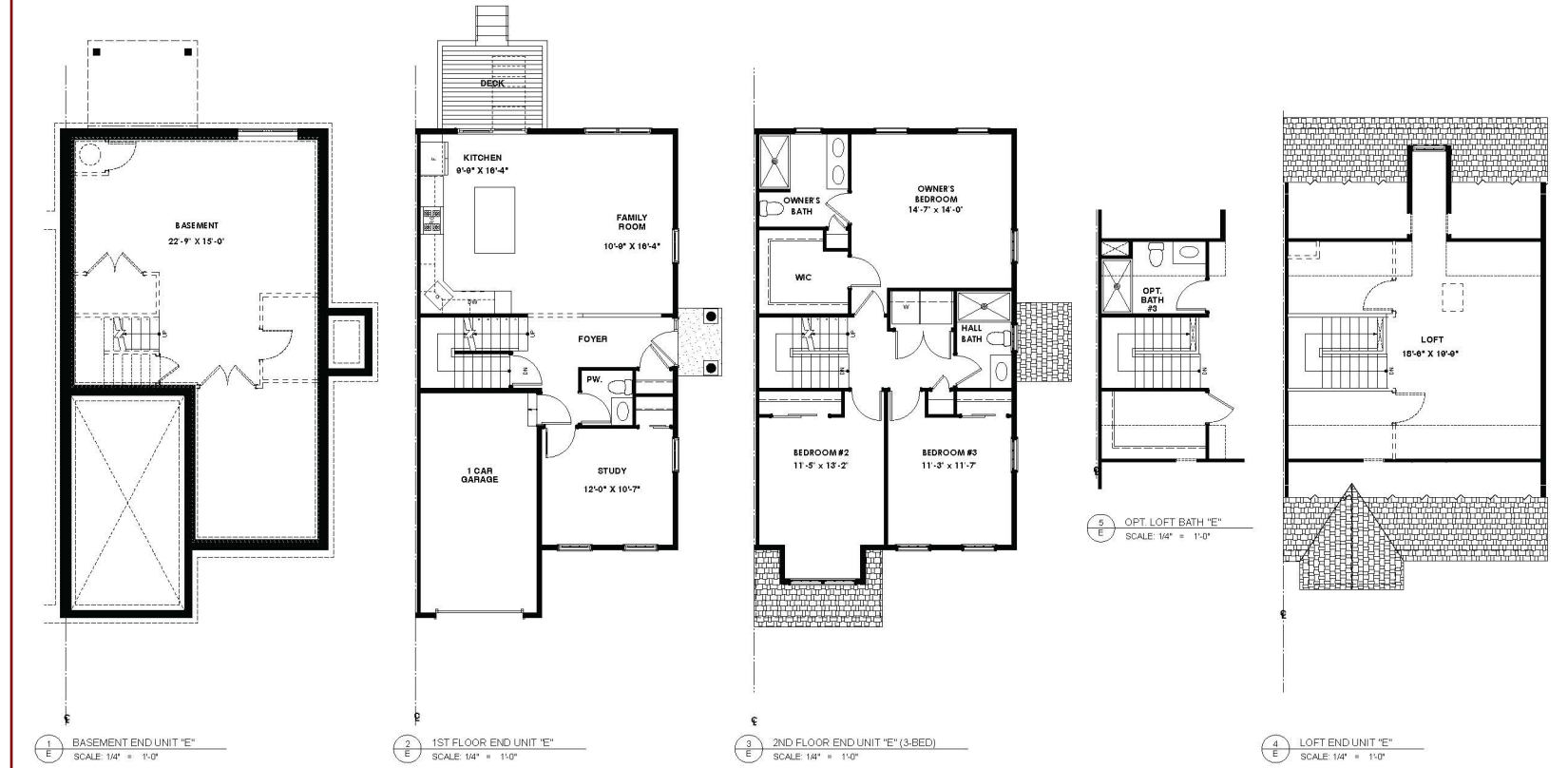
1706 to 2284 SQUARE FEET | 2-3 BEDROOMS W/LOFTS | 2 ½ BATHS | 1 CAR GARAGE

Cover Renderings are Artist's Conceptions. All dimensions are approximate and subject to field variation. Floor plans and dimensions are subject to errors and omissions. Purchasers must review detailed architectural drawings available in the sales office to ensure accuracy and understanding of home chosen.

THE WOODS  
AT  
HIDDEN MILL

by J.S. Hovnanian & Sons

**THE ELIZABETH**



HIDDEN MILL TOWNHOMES  
GLOUCESTER TOWNSHIP, CAMDEN COUNTY, NJ  
UNIT "E", ELIZABETH  
8/7/25

ARCHITECTURAL  
ALLIANCE

Contact 856-235-7416 | [www.hovhomes.com](http://www.hovhomes.com)

1706 to 2284 SQUARE FEET | 2-3 BEDROOMS W/LOFTS | 2 ½ BATHS | 1 CAR GARAGE

Cover Renderings are Artist's Conceptions. All dimensions are approximate and subject to field variation. Floor plans and dimensions are subject to errors and omissions. Purchasers must review detailed architectural drawings available in the sales office to ensure accuracy and understanding of home chosen.

## ***EVERY ONE OF THESE EXCEPTIONAL FEATURES IS INCLUDED***

### **LUXURY APPOINTMENTS**

- Dramatic 9-foot 1<sup>st</sup> floor ceiling
- Designer style insulated front door, with single sidelite and lighted front door chime, with front door security hardware
- Insulated garage door
- Walk-in closet in Owner's Bedroom
- Gas Heating and Cooking
- Convenient laundry with washer and gas dryer hook-ups
- Easy care LVP flooring in foyer, kitchen, dining area, family room and powder room in choice of decorator colors
- "One-piece" easy care vinyl in the hall bath and laundry in choice of decorator colors
- Custom millwork details include 3" baseboard and 2 ¼" door trim
- Two panel, smooth finish, interior doors with lever handles
- Decorator quality lighting fixtures
- Deluxe wall-to-wall carpeting in bedrooms, lofts and study in choice of decorator colors
- Ventilated vinyl shelving in all closets
- Professionally managed association with lawn care & snow removal (consult sales manager for details)

### **QUALITY CONSTRUCTION**

- Full Basements with option to finish
- Masonry fronts w/premium vinyl siding on sides & rear using professionally coordinated color schemes (per plan)
- Distinctive "Architectural" roof shingles with 30-year warranty and ice dam protection
- Fully sodded home site with professionally coordinated landscaping
- Fire Suppression System
- Automatic garage door opener
- Direct-line PEX plumbing system
- 7/16" OSB exterior sheathing
- Engineered wood roof trusses
- Pre-wired for 1 phone and 1 cable outlet
- 1 Car garage
- Concrete driveway and service walk
- 2 exterior hose bibs
- 2 exterior GFI electrical outlets
- Hard-wired smoke and CO2 detectors w/battery back-up
- Public water and sewer
- Underground utility lines
- 5-year warranted termite treatment
- Trex Deck w/Vinyl Rails or Paver Patio w/Trex Landing & Steps Plus Vinyl Rails



Contact 856-235-7416 | [www.hovhomes.com](http://www.hovhomes.com)

## ***EVERY ONE OF THESE EXCEPTIONAL FEATURES IS INCLUDED (CONTINUED)***

### **THOUGHTFULLY DESIGNED**

#### **KITCHEN & BATHS**

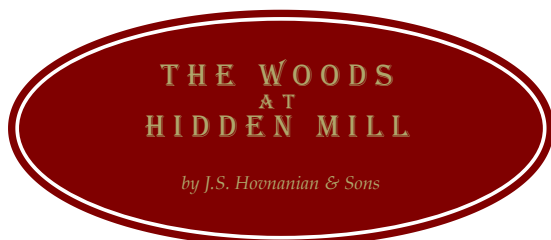
- Furniture quality 36” overhead cabinets, with crown molding, and seating island
- Granite kitchen countertop in choice of colors with under mount stainless steel single bowl sink and single lever faucet
- Pantry (per plan)
- Self-cleaning free-standing oven/range, dishwasher, microwave/hood with hood vented to the outside and food waste disposal
- Luxurious Owner’s bath with ceramic floors, 5’ Vikrell shower with 3-piece walls, convenient 34.5” high double bowl vanity per plan
- Vikrell tub with 3-piece walls in hall bath with vanity
- Cultured marble bath countertops, w/single lever faucets, anti-scald shower diverter and vented exhaust fan

### **NJ ENERGY STAR PROGRAM**

- High efficiency central heating and air conditioning with automatic setback thermostat
- Energy efficient tankless water heater
- Upgraded 200-amp service
- Insulated vinyl single hung tilt-in windows and sliding patio doors with Low-E, argon filled glass with screens
- R-45 to R-49 insulation in ceilings
- R-21 insulation in exterior walls
- Air infiltration barrier around windows and doors
- Each home designed, inspected, tested, and certified by NJ’s leading energy consultant
- 10-Year Home Warranty Program

***Builder shall have the right to make substitutions of comparable materials, brands and/or equipment***

4.23.26



Contact 856-235-7416 | [www.hovhomes.com](http://www.hovhomes.com)