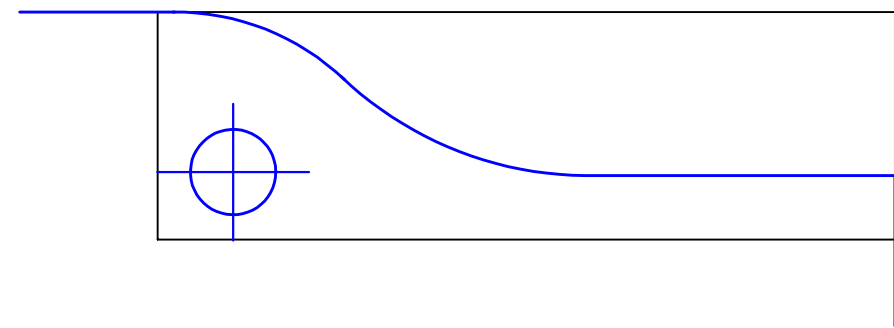


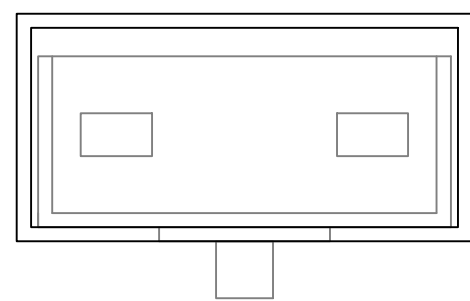
MB-M10 6-5/8" X 2-1/8" BOTTOM PATCH

1



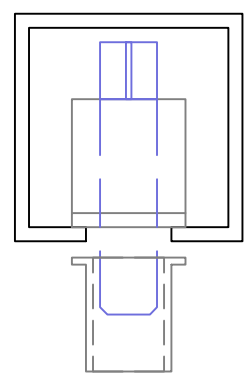
MB-M20 6-5/8" X 2-1/8" TOP PATCH

2



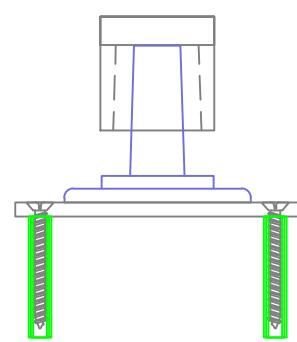
MB-42SC 2" X 4" HEADER
MB-9041 ADJUSTABLE HEADER PIVOT
USE WITH MB-302 PATCH INSERT

3



MB-22SC 2" HEAD/ BASE CHANNEL
MB-9041 ADJUSTABLE HEADER PIVOT
USE WITH MB-303 PATCH INSERT

4



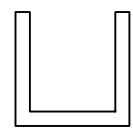
MB-56PB PASSIVE BOTTOM PIVOT
USE WITH MB-301 PATCH INSERT

5



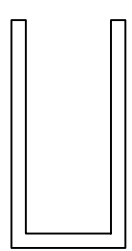
MB-MZ12 COPOLYMER FILLER

6



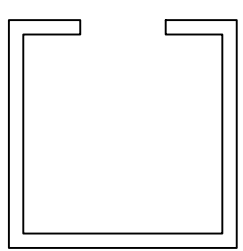
MB-1SC 1" BASE CHANNEL

7



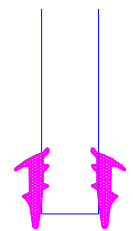
MB-2SC 2" HEAD CHANNEL

8



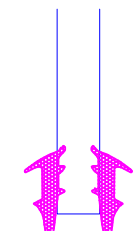
MB-22SC 2" HEAD/ BASE CHANNEL

9



MB-H12 APPLIED GASKET
USE WITH 1/2" GLASS

10



MB-H38 APPLIED GASKET
USE WITH 3/8" GLASS

11

FRAME SERIES

- 1000 Econo-Line

THE MAJORITY OF OUR FRAMING DETAILS CAN BE MODIFIED TO FIT YOUR PERSONAL NEEDS. PLEASE FEEL FREE TO CONTACT OUR SALES DEPARTMENT REGARDING SPECIFIC REQUESTS

MB PROVIDES GLASS EQUATIONS AND GLASS DIMENSIONS UPON REQUEST. THE CLIENT BARES ALL RESPONSIBILITY TO PROOF THE MATH AN DRAWINGS REGARDING FINAL GLASS DIMENSIONS. MB ASSUMES NO LIABILITY REGARDING FINAL GLASS SIZES

COPYRIGHT/DISCLAIMER

© COPYRIGHT 2018,

METAL BOUTIQUE

ALL RIGHTS RESERVED.

ALL MATERIALS, CONTENT, AND FORMS CONTAINED ON THIS DOCUMENT ARE THE INTELLECTUAL PROPERTY OF METAL BOUTIQUE AND MAY NOT BE COPIED, REPRODUCED, DISTRIBUTED OR DISPLAYED WITHOUT METAL BOUTIQUE'S EXPRESS WRITTEN PERMISSION. METAL BOUTIQUE DOES NOT WARRANT, EITHER EXPRESSLY OR IMPLIED, THE STRUCTURAL INTEGRITY, PERFORMANCE, OR DESIGN AESTHETIC OF AN ARCHITECTURALLY SPECIFIED PRODUCT. THE PRODUCT MANUFACTURER AND DESIGNER OF RECORD, IN ACCORDANCE WITH THE DETAILS, ASSUME SAID LIABILITIES. METAL BOUTIQUE DOES NOT TAKE RESPONSIBILITY FOR ADA COMPLIANCE. ALL PROPOSED PRODUCTS TO BE REVIEWED AND APPROVED PRIOR TO ORDER/FABRICATION.