

ARKANSAS'S GREAT SOUTHWEST



SEVIER COUNTY

HOWARD COUNTY



LITTLE RIVER COUNTY



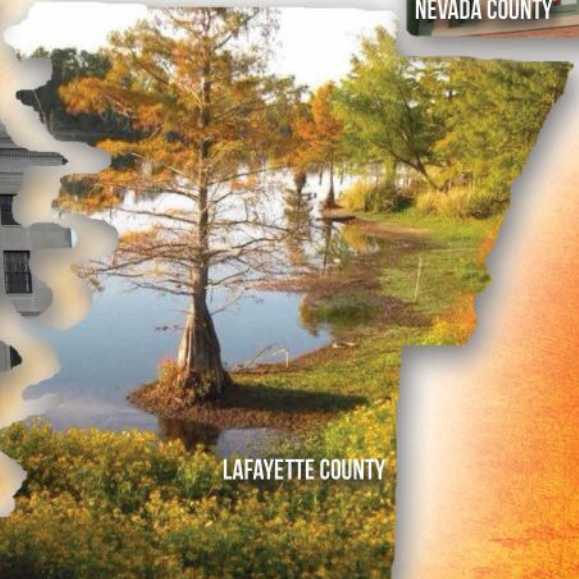
HEMPSTEAD COUNTY



NEVADA COUNTY



MILLER COUNTY



LAFAYETTE COUNTY



Annual
Jonquil
Festival



The Original
Bowie Knife
was Forged in
Washington,
Arkansas



Arkansas's First Heritage Site

UNIQUE DINING AND ACTIVITIES



HISTORIC WASHINGTON STATE PARK

870-983-2684
100 SW Morrison Street
Open 7 days a week, 8am-5pm
www.HistoricWashingtonStatePark.com
historicwashington@arkansas.com



WILLIAMS TAVERN RESTAURANT

870-983-2890
Open 7 days a week, 11am-3pm
www.HistoricWashingtonStatePark.com
historicwashington@arkansas.com

UNIQUE LODGING



COULTER FARMSTEAD

209 NE Gray Street
501-650-2296
Available 7 days a week
www.CoulterFarmstead.com
bradley@coulterfarmstead.com



HISTORIC WASHINGTON JAIL BED AND BREAKFAST

870-983-2684
Available 7 days a week
www.HistoricWashingtonStatePark.com
historicwashington@arkansas.com



WASHINGTON GRACE COTTAGE

215 SE Carroll Street
870-703-8256
Available 7 days a week
www.WashingtonGraceCottage.com
washingtongracecottage@gmail.com



ON THE COVER:

Known for its many amazing parks, spectacular outdoor activities, and abundant history, the seven counties in Arkansas's Great Southwest bring many visitors to the region. Many notable people are from this area which is overflowing with cultural and natural resources.

DISCOVER:

HEMPSTEAD COUNTY	6
HOWARD COUNTY	10
LAFAYETTE COUNTY	13
LITTLE RIVER COUNTY	15
MILLER COUNTY	26
NEVADA COUNTY	30
SEVIER COUNTY	32

Scan the code with
your smartphone to
visit www.agsw.org



PUBLISHER
Dr. Robin Rogers

GRAPHIC DESIGNER
Kim McMurry

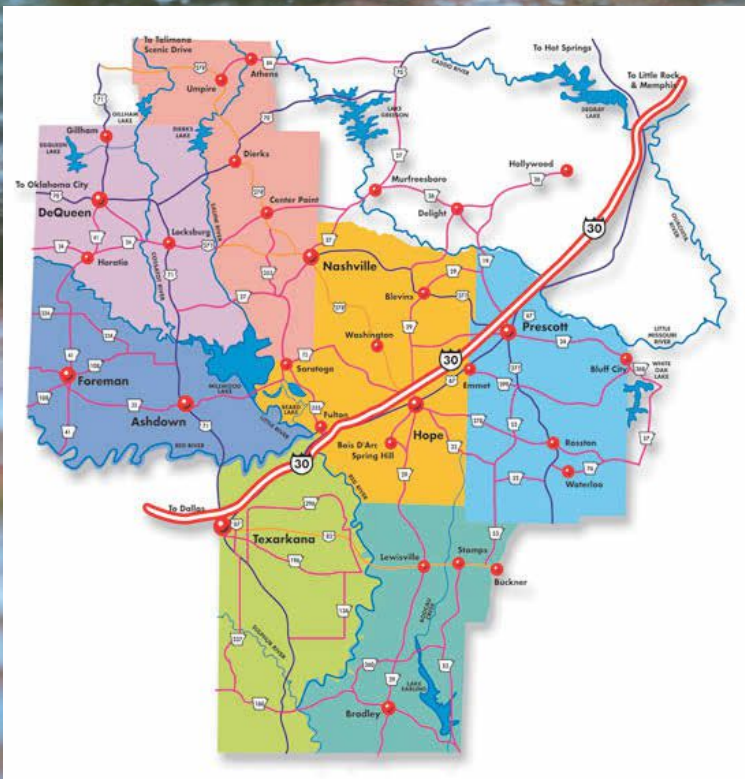
EDITOR
Suzy Turner

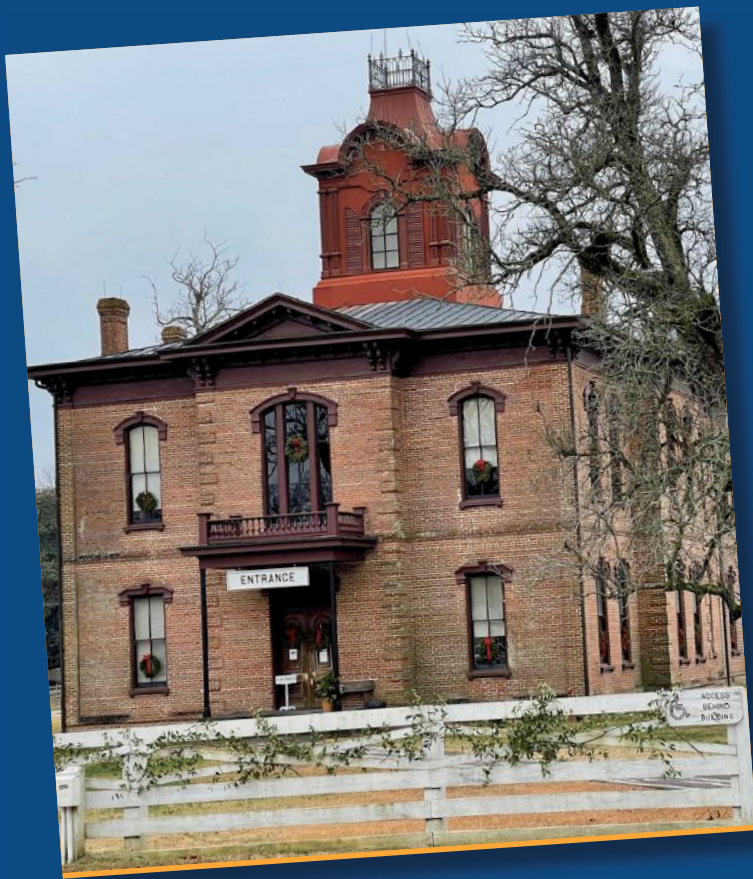
PHOTOGRAPHER
Dr. Robin Rogers

1-21 50M,
Printed in the U.S.A.

Printed
with State
and Private
Funds

This brochure is paid for with a combination of state funds and private regional association funds.





Welcome to ARKANSAS'S GREAT SOUTHWEST

Welcome to Southwest Arkansas, a corner of the world known for its natural beauty and charming hospitality. On those fronts, this region does not disappoint. From the lakes of De Queen and Millwood to Little Grand Canyon, our “backyard” is ideal for camping, swimming, hiking, fishing, hunting, boating, or just hanging in a hammock. And while there is certainly solitude to be found in the vast open space, good company is never hard to find; around these parts, friendliness is the default.

This area isn't only for outdoorsy types; leisure, shopping, and entertainment opportunities abound. Annual events like the Four States Fair and Rodeo, the Hope Watermelon Festival, and the Jonquil Festival draw crowds every year. In warmer months, families find relief from the heat at Holiday Springs Water Park and fresh produce at the region's many farmers' markets. When winter arrives, people of all ages enjoy Civil War reenactments in

Historic Washington, breathtaking performances from the Texarkana Symphony Orchestra, and trips to the many museums (at least one in every county). National history buffs won't want to miss checking out the birthplace of former U.S. President Bill Clinton in Hope or the exhibit of wartime weaponry at the Two Rivers Museum in Ashdown. Those interested in indigenous studies, regional history, architecture, or children's education should add the Texarkana Museums System to their must-visit list.

Our diverse dining options can satisfy every eater's desires—those seeking homestyle comforts as well as folks seeking modern fares. Terry Powell's Grocery in Hope is known for their house-made cracklins. With locations throughout the region, Big Jake's Bar-B-Que serves high-quality meat with their addictive secret sauce. For both casual and fine dining, check out Texarkana's Rail Yard Entertainment District, where you can start your evening with chips and margaritas and end it with espresso and crème brûlée.

Whether you're just passing through or setting up camp, a solo traveler or road tripping with the family, we're glad you're here. We hope this booklet serves as a preview of all our region has to offer.

Enjoy!

BOARD OF DIRECTORS,
ARKANSAS'S GREAT SOUTHWEST





SOUTHWEST ARKANSAS'S HOME FOR CONVENTIONS, CONCERTS, MEETINGS AND MORE.

This 65,000 sq. ft. premiere venue is home to award-winning performers, nationally-known acts, state conventions and more.

Hometown Venue, World-Class Experience.

HEMPSTEAD HALL FEATURES:

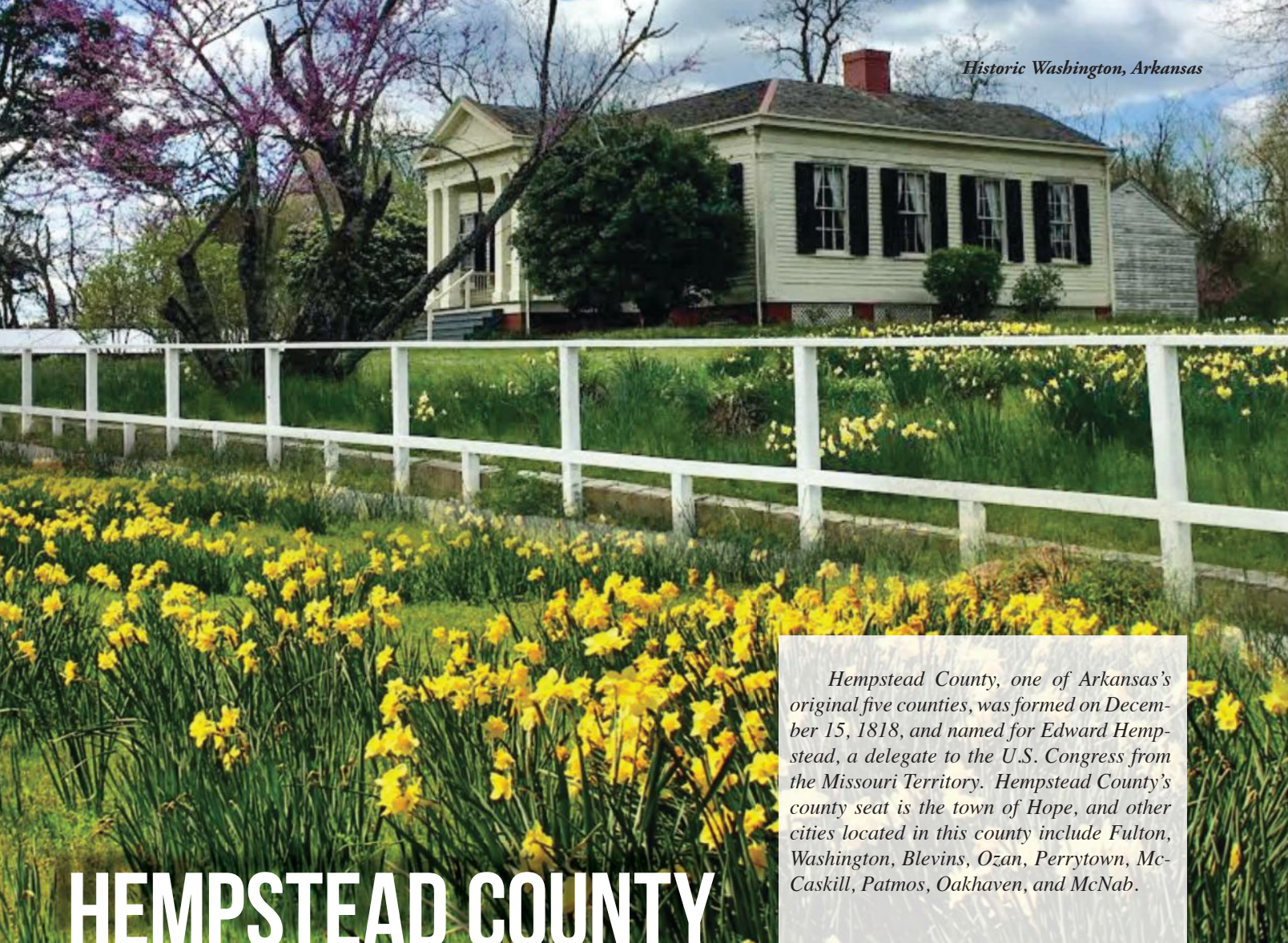
- A 1600-seat theater with a full production stage
- Four modern multifunctional conference suites
- Two conference rooms
- A full catering kitchen
- An outdoor amphitheater



Plan your next event with us **870.722.8565**
For a complete list of upcoming events or to purchase tickets visit
hempsteadhall.com

HEMPSTEAD
HALL

2500 SOUTH MAIN STREET ON UNIVERSITY OF ARKANSAS AT HOPE CAMPUS • HOPE, ARKANSAS



Hempstead County, one of Arkansas's original five counties, was formed on December 15, 1818, and named for Edward Hempstead, a delegate to the U.S. Congress from the Missouri Territory. Hempstead County's county seat is the town of Hope, and other cities located in this county include Fulton, Washington, Blevins, Ozan, Perrytown, McCaskill, Patmos, Oakhaven, and McNab.

HEMPSTEAD COUNTY

HEMPSTEAD HALL

Hempstead Hall, located on the University of Arkansas-Hope campus, serves as a premiere multipurpose conference center for meetings, events, banquets, and concerts. Performing arts and stage productions, from concerts to dance recitals to ice skating and movies, take place in the auditorium. The state-of-the-art theater and amphitheater also serve as a great Arkansas concert venue, hosting spectacular acts such as Little River Band, Arkansas Symphony Orchestra, The Spinners, Clint Black, The Charlie Daniels Band, Trace Atkins, The Oak Ridge Boys, and The Temptations.

The largest James Hayes art glass installation ever created suspends from the rotunda of Hempstead Hall. "Visions of Harmony, Colors of Hope" is a colorful, custom 714-piece art glass chandelier, created by artist James Hayes, a Pine Bluff, Arkansas, native.

Hempstead Hall is located at 2500 S. Main Street, Hope, AR



James Hayes Art Installation at Hempstead Hall

HILLAROSA ATV PARK

Four-wheeler enthusiasts who enjoy gathering for a muddy good time travel to Hillarosa ATV Park in Blevins, Arkansas. The park is also home to special events including Mud Nationals, Mud-din' for the Military, and Boggin' Away New Years' ride.



6252 AR-29, Blevins, AR

AT HOME IN HOPE

HOPE ARKANSAS'S PREMIER LODGING



2700 N. Hervey Street
Hope, Arkansas, 71801
870-777-4567
hamptoninn.com



Holiday Inn Express® Hope
2600 North Hervey
Hope, Arkansas, 71801
870-722-6262
Hiexpress.com



BEST WESTERN of Hope
1800 Holiday Drive
Hope, Arkansas, 71801
870-777-9222
bestwestern.com



PRESIDENT WILLIAM JEFFERSON CLINTON BIRTHPLACE HOME NATIONAL HISTORIC SITE

OPEN DAILY FROM 9 A.M. - 4:30 P.M.
TOURS OF THE HOME ARE AVAILABLE
EVERY HALF HOUR AND ADMISSION IS FREE.



nps.gov/wicl

117 SOUTH HERVEY STREET, HOPE, ARKANSAS 71801
PARKING AVAILABLE OFF SECOND STREET



Fair Park, 800 South Mockingbird Lane, Hope, AR

HOPE WATERMELON FESTIVAL

Held annually at Fair Park, 800 South Mockingbird, in Hope, this summer festival dates back to the mid-1920s and celebrates the state's largest watermelons. Arts and crafts, food, races, dog shows, contests, and music comprise the weekend's activities, as well as watermelon weigh-ins and watermelon eating/seed spitting contests.

HOPE VISITOR CENTER

Located at 100 East Division Street, the Hope Visitor Center is found in a restored 1912 railroad depot. It contains railroad memorabilia, historic photographs, and exhibits featuring Hope native and former U.S. president, Bill Clinton, and former Arkansas governor, Mike Huckabee.



100 East Division Street, Hope, AR

JAMES BLACK SCHOOL OF BLADESMITHING AND HISTORIC TRADES

History, art, and skill are celebrated and preserved at the James Black School of Bladesmithing and Historic Trades, located in Historic Washington. Unique to the University of Arkansas System, students learn the art of bladesmithing, forging, handles and guards, and Damascus steel, in the exact place where the Bowie Knife was born.

JONQUIL FESTIVAL

The arrival of spring in Southwest Arkansas is celebrated during the Jonquil Festival. Crafts, food, tours, and entertainers are part of the attractions that draw visitors to the town of Washington, Arkansas, annually.

KLIPSCH MUSEUM OF AUDIO HISTORY

The Klipsch Museum of Audio History in Hope is dedicated to preserving and sharing the technological discoveries of Paul W. Klipsch, an American audio pioneer. Collections of artifacts and memorabilia from audio history are on display here, as well as Klipsch speakers and many other great sound inventions.

HISTORIC WASHINGTON STATE PARK

A unique museum village and Arkansas's first Heritage Site, Historic Washington State Park preserves the history of 19th-century Washington, Arkansas. Guides provide historic tours and interpretive programs. The 1874 Courthouse serves as the park visitor center. A Blacksmith Shop, Weapons Museum, Print Museum, Williams Tavern Restaurant, and other restored locations make up this historic collection. Special events are scheduled throughout the year, including Christmas and Candlelight, Civil War Weekend, and Music in the Park. Hands-on workshops scheduled periodically include knitting basics, knife making, gardening basics, soap making, and weaving.

PRESIDENT WILLIAM JEFFERSON CLINTON BIRTHPLACE HOME NATIONAL HISTORIC SITE

The childhood home of William Jefferson Clinton, the 42nd president of the United States, is located at 117 Hervey Street in Hope. The home has been restored and furnished with period furnishings by the Clinton Birthplace Foundation, Inc. This National Park Service National Historic Site includes the birthplace home, a visitor center, and the Virginia Clinton Kelley Memorial Garden.

RICK EVANS GRANDVIEW PRAIRIE CONSERVATION EDUCATION CENTER

Outdoor experiences are plentiful at the Rick Evans Grandview Prairie Conservation Education Center, located close to Columbus, Arkansas. Situated on the blackland prairie, this beautiful land is home to prairie plants and numerous animals, including deer, birds, and reptiles. A pond offers fun fishing enjoyment, while a shotgun range offers a place to sharpen shooting skills. Many Indian artifacts of the past can be found here while some are displayed at the center. This education center offers a great place for school children to visit, while learning about the area's cultural and natural resources.



1685 Hempstead 35 Rd. N., Columbus, AR

Four States FAIR & RODEO

Our 70,000 sq. ft. Entertainment Center, 7,000 sq. ft. Fine Arts Building and 100 acre Fairgrounds provide venues for weddings, receptions, concerts, R.V. rallies, conventions, family shows and events of all kinds. The Annual Four States Fair spans ten days. It includes a PRCA rodeo, demo derby, concerts, exhibits, carnival rides, food and entertainment.



Four States Fair Parkway (Loop 245) • Texarkana, AR 71854

(870)773-2941

For A Complete List of Events, visit us At **fourstatesfair.com**

Like us on facebook for up to date information and events
<https://www.facebook.com/fourstatesfair/>

Bringing family friendly entertainment
to the Four States area!

- **State-of-the-art, Four States Equine Center**
with 200 stalls, additional 400 stalls can be set up in buildings attached to Equine Center by covered walkways
- **Texarkana's "All-Weather" Entertainment Center**
The largest climate controlled facility from Dallas to Little Rock and Shreveport to Fayetteville
- **Annual Four States Fair & Rodeo**
A tradition in the region for over 70 years, the 10 day fair is held annually in Texarkana, Arkansas.

CONCERT EVENTS CONVENTIONS EXHIBITS RECEPTIONS FAMILY & CLASS REUNIONS PRCA RODEA LIVESTOCK SHOWS



The ALC is the first of its kind in Arkansas & the four states region promoting dairy & beef education along with agricultural awareness in children.

It's a place where kids go to participate in interactive hands-on learning activities about how our food really gets to the table.

Best of all, every visit is FREE!!

And it is right here in Texarkana located on the Four States Fairgrounds.

The Ag Learning Center is open year-round performing programs for groups of children of all ages. The programs here show where dairy, beef, & other agricultural products actually come from & the vital role of the "American Farmer." Although the Ag Learning Center is primarily known for their school field trips and other organizations, other educational organizations such as the Boy & Girl Scouts, 4-H clubs, church groups & more are also welcome. All ag educational programs are FREE here to serve our community!!! The ALC is also available for rental with two large meeting rooms complete with audio/visual that are ideal for presentations, meetings, workshops and more.

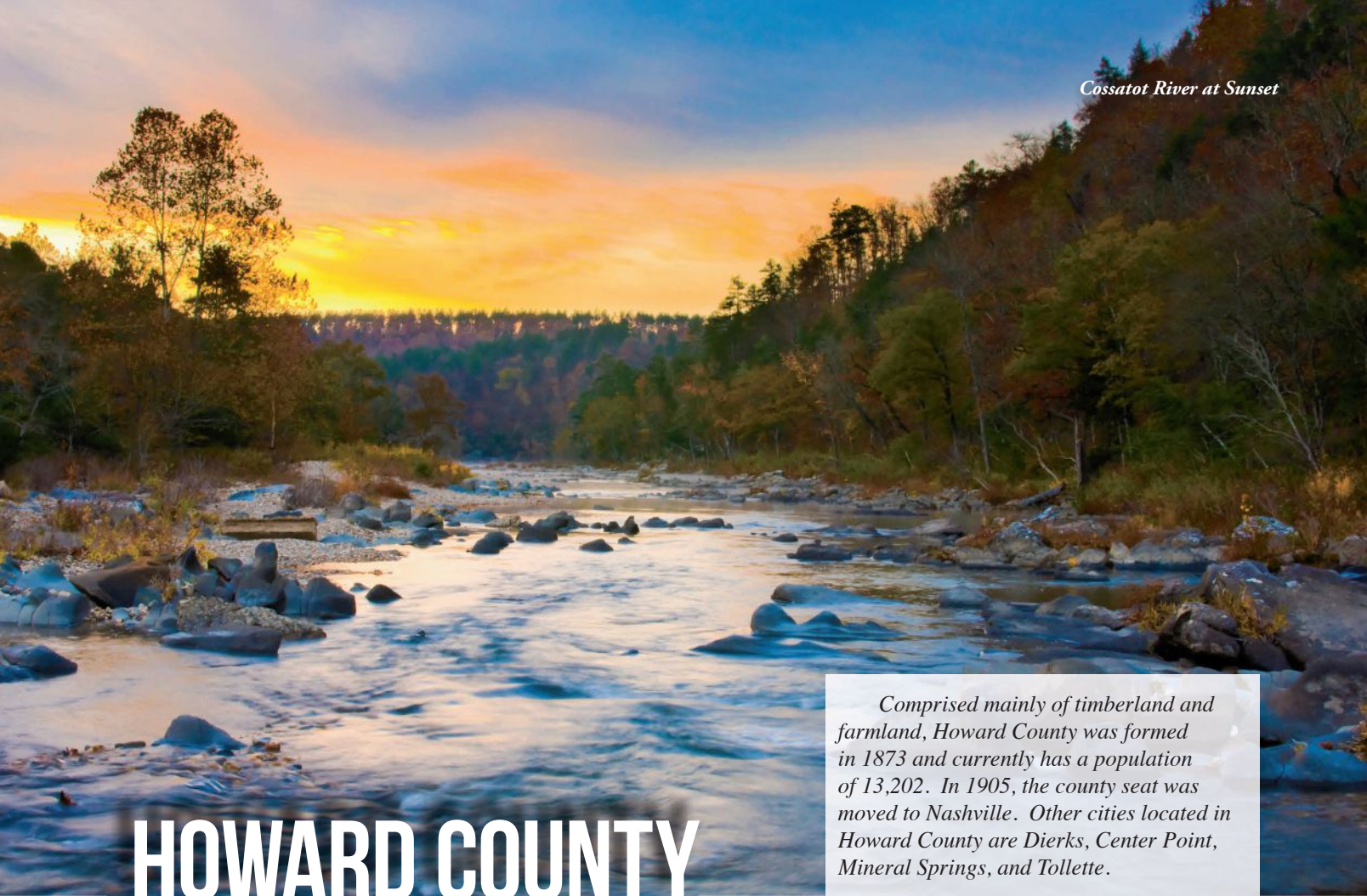
Teachers book your field trip today for your students' adventure in ag.
Remember it's a FREE educational experience here to serve our community.
Call & book your next learning experience today.

For more information on how to register a group for a private visit, contact us.
Loop 245 & E. 50th St. • Texarkana, AR 71854

870-774-MILK • www.aglearningcenter.com

Hi kids!
Visit the all new
Agricultural Learning
Center today!





HOWARD COUNTY

Comprised mainly of timberland and farmland, Howard County was formed in 1873 and currently has a population of 13,202. In 1905, the county seat was moved to Nashville. Other cities located in Howard County are Dierks, Center Point, Mineral Springs, and Tollette.

COSSATOT RIVER STATE PARK

The Cossatot River begins in the Ouachita Mountains, south of Mena, Arkansas, then flows southward, through the Cossatot River State Park-Natural Area. The stream borders the Howard County Wildlife Management Area, then impounds into Gillham Lake. Below the lake, it continues south past De Queen and joins Little River just above Millwood Lake. Fishing, camping, rafting, canoeing, and kayaking are plentiful. Hikers can enjoy four scenic trails spanning approximately 20 miles.



209 State Park Road, Murfreesboro, AR

CRATER OF DIAMONDS STATE PARK

Located approximately 15 miles from Nashville, Arkansas, Crater of Diamonds is a unique experience where people from all over the world come to search for diamonds in the eroded surface of a volcanic crater. Rocks, minerals, and gemstones are also found

while searching for diamonds. Walking trails, picnic area, and RV camping are also available at the park. This area also features great fishing and boating on Lake Greeson and trout fishing along the tailwaters of Narrows Dam on the Little Missouri River.

DIAMOND PARK SPEEDWAY

Diamond Park Speedway is a semi-banked 3/8 mile rich red clay oval racetrack in Southwest Arkansas, close to Nashville. Regular racing nights include Front Wheel Drive, Bombers, Factory Stocks, Modifieds and Mod Lites. Special event nights are held throughout the year, so come out and enjoy the fun!

DIERKS LAKE

A U.S. Army Corps of Engineers lake, Dierks Lake offers 1,360 acres for boating, canoeing, kayaking, camping, and swimming. Located in the Ouachita region of Arkansas, Dierks Lake sits on the Saline River. Known for its excellent bass and crappie fishing, hunters will find approximately 600 acres of public hunting lands in the upper reaches of the project.



#ARSTATEPARKS

EXPERIENCE

the elements

COSSATOT RIVER STATE PARK

WHITE OAK LAKE STATE PARK

MILLWOOD STATE PARK

HISTORIC WASHINGTON STATE PARK

CRATER OF DIAMONDS STATE PARK

ARKANSAS STATE PARKS PASSPORT

Pick up your **FREE PASSPORT** at the nearest state park today.

Arkansas State Parks

Plan your adventure at [ArkansasStateParks.com](https://arkansasstateparks.com).

DIERKS

Gateway to the Ouachitas

The great outdoors is all around you in Dierks. From fishing and deer hunting to white water canoeing and kayak adventures, there's something to please avid sportsmen and outdoor lovers.

- Dierks Lake with largemouth bass fishing, plus crappie, catfish and bream.
- Cossatot River State Park Natural Area - Eleven miles of the most rugged and spectacular river corridors in the central US furnishes challenging canoeing and kayaking, plus fishing for smallmouth and spotted bass in tranquil waters.
- Hunting abounds. Howard County, Provo and Lake Greeson Wildlife Management Areas combined offer over 75,000 acres for excellent hunting offering an opportunity at a variety of game including deer, turkey, squirrel, rabbit and quail.

Pine Tree Festival, first weekend in August, Mini Rodeo, Bull Riding Tour, Cross Cut Competition, Sawdust Scramble, Guess Log Truck Weight, Kids' Carnival, Bounce House, Food Vendors, Archery Shoot, Arts & Craft Vendors

Enjoy the refreshing quality of life - everything from shopping on Main Street to an excellent school system and four beautiful seasons.

NASHVILLE CITY PARK

Nashville, Arkansas, City Park is the perfect place for outdoor fun. For spending the day with immediate family or hosting a family reunion, the park's 130 acres has ample space. Amenities include: softball fields, disc golf, fishing lake, tennis courts, basketball courts, baseball fields, playgrounds, soccer fields, skate park, walking trails, volleyball court, campsites, outdoor covered stage, and numerous pavilions.



1301 W. Johnson Street, Nashville, AR

NASHVILLE COMMERCIAL HISTORIC DISTRICT

Centered at the junction of Main and Howard Streets, downtown, the Nashville Commercial Historic District buildings were built between 1895-1930s. The oldest building in the district is located at 203 North Main, built circa 1895. This area is listed on the Arkansas Historic Register. One block over at the corner of 2nd and Hempstead Street is the 1912 E.A. Williams Chapel/Museum which is on the National Registry of Historic Places. The former Presbyterian Church features Victorian-Gothic Stick architecture from the 1850s, historical artifacts of Howard County, dinosaur bone collection, Caddo Indian artifacts and a military display that covers the Civil War, Spanish American War, WW1 and WW2. Located down the street at Main and Sybert is the Lyons Center which houses the Howard County Historical Society, Nashville's Old City Hall, the Old Nashville Fire Department Museum, the Trailways Bus Station museum and the Stormy Blagg Train House. The museums are open free to the public.



Old Nashville Fire Department Museum



Peach Blossom Festival

PEACH BLOSSOM FESTIVAL

Nashville, Arkansas, City Park is the site of the town's annual Peach Blossom Festival, held the first weekend of May. Vendors, rides, antique/classic car show, and arts & craft vendors are just a small part of the scheduled activities. September brings the annual Pack the Park Car Show and Swap Meet sponsored by the Howard County Historical Society and the Nashville City Park.

PINE TREE FESTIVAL

Dierks, Arkansas, hosts its signature annual event, the Pine Tree Festival, in City Park on the first weekend of August. Celebrating the town's lumber industry, the event features children's activities, vendors, a parade, and games.

STAND UP FOR AMERICA CELEBRATION

In recognition of Independence Day, Nashville, Arkansas, hosts a Stand Up for America Celebration the Saturday following July 4 in the Nashville City Park, located at 1301 West Johnson. Musical performances are slated throughout the evening while veterans from all branches of the military are recognized. A fireworks display wraps up activities after dark.



TOLLETTE HOMECOMING

A biennial celebration, the Tollette Homecoming occurs the second week of August on the Town Hall grounds at 205 Town Hall Drive in Tollette, Arkansas. Activities include a parade, class meet and greets, games, and vendors.



LAFAYETTE COUNTY

Lewisville, Arkansas, is the county seat of Lafayette County. Also comprised of the cities of Bradley, Buckner, and Stamps, Lafayette County has a landscape made up of rolling hills and much forest land. Lake Erling is included in the Lafayette County Wildlife Management Area, and Lake June offers fishing, water sports, and picnicking.

BURGE'S HICKORY SMOKED TURKEYS & HAMS

A family tradition, Burge's has been located in Lewisville, Arkansas, since 1962. Famous for their smoked turkeys and smoked hams, Burge's also offers a vintage-style dining experience and a delicious menu. Burge's was inducted into the Arkansas Food Hall of Fame in 2018.



526 Spruce Street, Lewisville, AR



Governor Conway Days Festival

GOVERNOR CONWAY DAYS FESTIVAL

Held the last weekend in March in Bradley, Arkansas, Governor Conway Days Festival honors James S. Conway, Arkansas's first governor. The event features arts & crafts vendors, car show, children's events, and a bass tournament.



Bradley Arkansas Junkfest

JUNKFEST

During the first weekend in October, the city of Bradley, Arkansas, hosts the largest garage sale in South Arkansas. Come out and shop the many booths, eat some great Junkfest food while enjoying live country music.

LAKE ERLING

Located in Lafayette County, this lake is 4,389 acres in size. A man-made lake, Lake Erling was originally built to supply water for a paper company. Fishing is a popular sport at Lake Erling with white crappie, largemouth bass, channel catfish, bluegill, and redear sunfish the major sportfish found in the lake.

LAKE JUNE

An 80-acre lake that was completely revitalized in 2017-18, Lake June is a popular fishing location for residents of Stamps and Lafayette County. It is known as “the pond” to many, and the late Maya Angelou, Stamps’ most notable resident, wrote about “the pond” many times in her world-renowned literature.



Lake June, Photo by: Sharla Owen

GOVERNOR CONWAY DAYS FESTIVAL BRADLEY, ARKANSAS



First Governor of Arkansas
James S. Conway
Governor 1836 - 1840

Be a part of the *award-winning Governor Conway Days Festival* held the last weekend in March celebrating Arkansas' first governor.





For information, contact the Bradley Chamber
870.894.3935 | deloisdm@yahoo.com



LITTLE RIVER COUNTY

Little River County, located in the southwest corner of Arkansas, borders Texas and Oklahoma. Little River County has rolling, pine-covered hills, and a rich history is plentiful in this county. Ashdown is its county seat, and other cities located within the county are Alleene, Foreman, Ogden, Wilson, and Winthrop.

HUNTER-COULTER HOUSE

Listed on the National Register of Historic Places, the Hunter-Coulter House is a Craftsman-style home, located in Ashdown, Arkansas. The house was built in 1918 by local builder, Henry Westbrook for William Grant Hunter, an Indiana native who relocated his undertaking business to Ashdown. It was later purchased by a dentist, Dr. John Coulter. It is now owned by the Little River County Historical Society.

LEGACY RANCH

Sitting in the southwest corner of Arkansas, bordering the Red River, Legacy Ranch provides luxury lodging during whitetail deer, elk, duck, and upland bird season for hunters and guests. Home to several elk herds, this is the perfect place for the avid sportsman who enjoys hunting and fishing.

LITTLE RIVER CLUB

A private club located in Winthrop, Arkansas, Little River Club was established in 1928 and sits on 1,100 acres. Known to many as a family playground, with easy access to the Little River, this private country club is a gathering place for friends and family. It contains a nine-hole golf course, swimming pool, tennis courts, hunting, fishing, and clubhouse.

MILLWOOD FISHING CHALLENGE

Little River Chamber of Commerce and Arkansas Game and Fish Commission will host an annual Millwood Fishing Challenge.

Over 100 prize-winning fish, worth a total of \$137,500, will be up for grabs during this fun event.

MILLWOOD LAKE

Located nine miles east of Ashdown, Millwood Lake was formed when Arkansas's longest dam was completed across the Little River. A renowned largemouth bass, catfish, and crappie fishing lake, the 29,260-acre lake is also rated as one of Arkansas's best birding locations. Millwood State Park is a popular destination for camping, picnicking, bicycling, walking, and canoeing/kayaking.



Millwood Lake

LITTLE RIVER COUNTY

The Great Outdoors...and So Much More

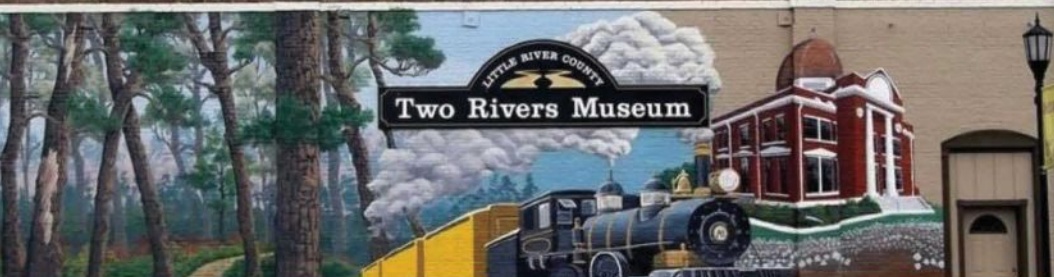
Little River County is a thriving mix of international industry, southern hospitality and unending outdoor recreation. The citizens of Little River County in Ashdown, Foreman, Winthrop, Ogden and Wilton enjoy a rare and relaxing quality of life.

With miles of unspoiled beauty and the 29,260-acre Millwood Lake, Little River County is your destination for the great outdoors, but it offers so much more.

Visit quaint country stores, upscale boutiques or take a swing on the Millwood Landing Golf Course. Historical sites and museums like the Two Rivers Museum abound.

Enjoy entertainment in every season, with family activities such as the Little River County Fair, Ashdown City Park's new splash pad, sporting events, camping, fishing, parades, Christmas events and more.

With beauty, hospitality, and convenience, you'll always feel welcome in Little River County.



www.ashdownarkansas.org
870-898-2758 · director@littlerivercoc.org
180 E. Whitaker, Ashdown, AR 71822



Two Rivers Museum, 5 East Main Street, Ashdown, AR

TWO RIVERS MUSEUM

The Little River County Historical Society's Two Rivers Museum is located on the corner of Constitution Avenue (Hwy. 71) and Main Street in Ashdown, Arkansas. It contains a variety of historical displays including a large collection of artifacts. Something for everyone can be found, from military and medical exhibits to pipe and hat exhibits. A horse-drawn hearse, Civil War memorabilia, and an antique gun collection draw much attention from visitors.

WILL REED FARM HOUSE

The Will Reed Farm House, also known as the "Pioneer Farm House," is located in Alleene, Arkansas. Listed in the National Register of Historic Places in 1978, the home was built about 1895 by J.D. Abney in the "dog trot" style. The Little River

County Historical Society now owns the house and operates it as a historical museum.

WINTHROP SCHOOL MUSEUM

A historical representation of a rural school building in the early 20th Century, the Winthrop School Museum is located in Winthrop, Arkansas. A two-story brick building, reminiscent of the Colonial Revival style, the city hall is located inside, and the building also serves as a community meeting center and election facility.



Little River County Courthouse, 351 North 2nd Street, Ashdown, AR

Dang Good Bar-B-Que!



the Original
FRIED PIE
SHOP

Big Jake's Bar-B-Que

— & CATERING CO. —

Hope Star's Reader's Choice • Best of FourStates Living
Taste of Texarkana Crowd Favorite

TEXARKANA | HOPE | ASHDOWN

bigjakesbbq.com





Two Rivers MUSEUM

Sponsored by the Little River County Historical Society

10 a.m. - 4 p.m.
Tuesday - Saturday

870-898-7200
 5 East Main Street | Ashdown, Arkansas

Proudly supported by  **Domtar**

a
Slice

OF THE GOOD LIFE

HOPE
ARKANSAS



HOPE ADVERTISING AND PROMOTION COMMISSION

P.O. BOX 596, HOPE, AR 71802-0596 | 870.777.7500 | 1.800.223.4673

AGSW.ORG



DOWNTOWN DELIGHTS

Just a few steps from the Visitors Center, you'll find a favorite downtown restaurant called Tailgaters Burger Co. Take a memorable photo with the red, Model A Ford classic out front! This popular dining spot is located in the former Capital Hotel and offers tourists a chance to stroll down memory lane simply by looking at the amazing "days-gone-by" décor. You can even dine on an actual tailgate!

Leisurely walk the streets, and discover great shopping from Division to the antique shops on Elm with treasures all in-between. A must-stop is the new coffee house called Hebrews 11:1, housed in the tallest building in the heart of downtown, the National Building. Tourists need to bring a major sweet tooth with them, because sweets and treats can be found in the most unique and inviting stores in Southwest Arkansas.

Heritage Wall Millennium Public Art Project

Established by Southwest Arkansas Arts Council in 2000, the heritage wall celebrates the railroad heritage of Hope and Hempstead County.

Southwest Arkansas is home to a place called Hope, whose welcoming culture has birthed a president, a governor, and a famous inventor and whose calling card is a sweet slice of watermelon. With a rich history dating back to 1852, day trip visitors have the opportunity to enjoy strolling, shopping, and dining. So hop aboard and spend some time in a friendly community that loves to make tourists feel welcome!





The Arts Council also worked to improve awareness of downtown. As a downtown entity, the Arts Council offers artists gallery space to showcase their talents.



The city has a variety of restaurants that offer something for every palate, including: Mexican, Italian, American, Chinese, and Japanese. For extra special sweet treats, tourists will want to check out the Picket Fence and Elm Street Marketplace, both located downtown.



There are several murals downtown, including one of the "Band of Hope" painting with President Clinton on sax, Arkansas Governor Mike Huckabee playing bass guitar, and Patsy Montana and Ketty Lester, who were famous singers of their time from the Hope area.

Most of the historical buildings you'll discover were built between 1880 and 1945, the major period of Hope's development. The most architecturally significant buildings in the historic district are the Brundidge Building, an 1893 Romanesque Revival structure, and the former post office built in 1911 in the Renaissance Revival style. It is now owned by the Hope School District.





UNIVERSITY OF ARKANSAS AT HOPE HEMPSTEAD HALL

Hempstead Hall is the newest performance/meeting space venue in Southwest Arkansas. Home to conventions, concerts, and cultural events, the facility features a 1,600 seat theater, four modern conference suites, two meeting rooms, full catering kitchen, and an outdoor amphitheater.



In addition to hosting Grammy Award-winning musical acts, country music's top hit makers and some of the biggest events in SW Arkansas, the 65,000 square foot venue is also Hempstead County's most versatile facility. It is the perfect site for conventions, parties, reunions, and a variety of other events. It is located on the campus at Arkansas Highway 29, at the southern city limits of Hope. For upcoming events, visit HempsteadHall.com. UAHT also has an outdoor walking track/trail that winds around beautifully landscaped areas near the college campus.





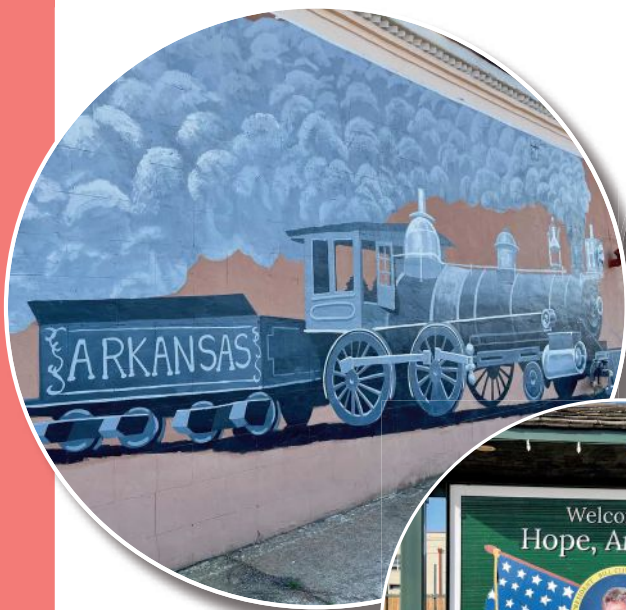
A DEPOT OF DREAMS

Follow the railroad tracks only a few blocks deeper into downtown, and take in the sights and sounds of a town with a rich history of trains. The Visitors Center & Clinton Museum is located inside the actual Missouri Pacific Railway Depot at the intersection of South Main and Division Streets. Originally built in 1912 as the Iron Mountain/Missouri Pacific Freight and Passenger Depot, the structure was restored by the City of Hope in 1995 with the help of grants. It is on the National Register of Historic Places and currently runs as a major Amtrak stop.

Not only a showcase for one of Arkansas's best collections of

railroad artifacts, the Depot houses an impressive collection of photos, a video, and memorabilia from the life of President Clinton. You can also learn about native son, past Governor Mike Huckabee. Even the bathrooms are full of memorabilia! There's a replica of a watermelon that was grown in 2005 and weighed 268.6 pounds. Lloyd Bright grew the *Guinness Book of World Records* winner on his father's land, east of Hope. This massive melon beat the family's own record of 260 pounds from 1986.

Visit in May for the city's "Train Days" festival (contact the Chamber of Commerce for dates.) During this one-day festival, children and adults can enjoy food, music, crafts, and a variety of kid-focused activities.





A SLICE OF THE GOOD LIFE!

The Annual Watermelon Festival

No life is complete without attending the famous Hope Watermelon Festival which is held annually during the first full weekend of August in the 190-acre Fair Park. Hope is built on sandy soil which is the secret behind giant, Guinness World Record setting watermelons. Come enjoy the sights, sounds, and smells of a spectacular festival! For three days, the young and young at heart have exciting entertainment options, including: arts & craft vendors, live music, a variety of concessions, a jammed-packed Kidz Zone area filled with low-cost or free activities for all ages. Take in a dog show, watch the "Watermelon Idol" talent contest, run a 5K race or walk a melon mile. There are Watermelon Olympics, civic clubs hold smoked chicken and golden fried catfish dinners. You'll also enjoy an Antique Car and Bike Show, Watermelon Waddle Duck Races, the Rusty Wheels and Engines Museum in the Park, Watermelon Eating and Seed Spitting Contests, Watermelon Weigh-in and Auction, Baggio Tournament, AND watermelon by the slice!

190-Acre Fair Park also offers:

For RVers, the City of Hope RV Park is located within Fair Park at 800 South Mockingbird Lane. It offers about 200, 50 amp electric hookups with water, for a reasonable rental fee. There are 20 full hookups (electric/water/sewer) for the monthly renters.

Visitors to the park can fish in The Mike and Janet Huckabee Lake which was built in cooperation with the Arkansas Game and Fish Commission. The 11-acre lake complex features a concrete walking trail completely around the rim of the lake, several handicapped-accessible fishing piers, concrete lined shores, and boat ramp.

Fair Park has several other facilities, including two playgrounds, three tennis courts, basketball court, and a 9-hole Disc Golf Course starting at the swimming pool parking lot. The swimming pool is typically open for the season around Memorial Day and closes around Labor Day with nominal day rates for kids and adults.

The parks in Hope offer picnic areas, soccer and softball fields, as well as playground fun. Also located in Fair Park is Huckabee Lake. Walking trails create easy access to the lake that is known to be a nice place to catch a fish or two. It is handicap accessible.



KLIPSCH REVOLUTIONIZES SOUND IN HOPE

Klipsch Speakers Changed the Sound Industry

There is one place in Hope that lovers of sound will not want to miss: the Klipsch Museum of Audio History at 136 Hempstead 278 Road. For the audiophiles around the world, don't miss the story of brilliant inventor Paul W. Klipsch who revolutionized speaker sounds forever in his pursuit of audio perfection. A journey into the museum is like taking a trip back in time to the very beginning of great sound. In 1946, Paul W. Klipsch (PWK) changed the face of the audio industry by inventing, discovering, hypothesizing, and proving that it was darn well possible to make and reproduce exciting, explosive, accurate audio. Real, dynamic music was heard in living rooms for the first time – nearly mimicking the power of a live performance. Along the way, Paul Klipsch worked with industry giants, famous pop stars, and some of the smartest people in the world – always in search of a better sound. Klipsch was an eccentric man, known for his wit and determined ways. He changed the sound industry from Hope, Arkansas. Stationed in Hope at the Southwest Proving Grounds during World War II, Klipsch spent his time tinkering on the loudspeaker and phonograph systems of the day. His goal was to make sound better; at least, the way he liked it.



Company Factory – After the war was over, Klipsch followed the encouragement of fellow servicemen and founded Klipsch and Associates in 1946 after receiving a patent for his design in 1945. The Klipschorn is the only known speaker that has remained relatively unchanged for over 70 years. He made each instrument himself until he was able to add staff two years later. Today, Klipsch Audio Technologies is based in Indianapolis, Indiana, and makes loudspeaker tools used in concert halls, movie theaters, churches, and

large gathering spaces.

Klipsch Auditorium

Klipsch Auditorium is a 400 seat capacity theater on the top floor of City Hall. This facility was updated some in 1995 with the larger City Hall renovation but remains similar to how it looked when it was built in 1926.

Klipsch Audio Museum

The Klipsch Museum of Audio History holds relics like prototypes of new products and some of Mr. Klipsch's own tools, as well as pieces developed by some of the "giants" upon whose shoulders he stood. Tour the collection and listen to the stories. Hear fantastic stories about the "madman from Hope" and his adventures in the air and on the ground.

Dedicated to Preservation

The people behind the history of Paul Klipsch and his genius believe in the importance of science in education, the spirit of discovery, and good 'ol American ingenuity. As a nonprofit organization, the Klipsch Museum of Audio History is dedicated to preserving and sharing the technological discoveries, artifacts, and principles of Paul W. Klipsch. Open 10 a.m. to 2 p.m. Wednesdays through Fridays, the Klipsch Museum is free to the public. Visit the history of sound at 136 Hempstead 278 Rd., Hope, Arkansas, 71801 or call (833) 794-5287.



Klipsch Museum of Audio History



PRESIDENT CLINTON'S BOYHOOD HOMES

Journey only five minutes from I-30 to the edge of Downtown Hope where you can discover the birthplace of our 42nd President, William Jefferson "Bill" Clinton. The first four years of his life were spent in a two-story, white house which has been restored to closely resemble the home as they knew it, according to the memory of his mother. It is a National Historic Site owned by the National Park Service.



POINTS OF INTEREST

- 1) Clinton Childhood Home | 321 East 13th Street
- 2) Clinton Birthplace | 117 South Hervey Street
- 3) Clinton Elementary Museum | 500 South Spruce Street
- 4) Hope Visitor Center Museum/Tribute to Clinton Sign | 100 E Division St.



MILLER COUNTY

Located in the extreme southwest corner of the great state of Arkansas is Miller County, whose county seat is Texarkana. With a total population of 43,257, other cities located within the county include Fouke, Garland City, Genoa, and Doddridge.

1894 CITY MARKET & ART GALLERY

Located in the former Ritchie Grocery Store in Texarkana, Arkansas, this art gallery is home to many regional artists. Art classes are held weekly, and the Second Saturday Trade Days brings in artists, crafters, and live music from regional musicians.



105 Olive Street

ARKANSAS MUNICIPAL AUDITORIUM

The Arkansas Municipal Auditorium is a popular Texarkana tourist stop. Major music acts have performed in the venue over the years, including Elvis Presley and Johnny Cash. An exhibit features musicians who have performed in the auditorium throughout the years.

ARKANSAS WELCOME CENTER AT RED RIVER

Travelers can get up-to-date information about attractions and events at the Red River Welcome Center, located at 12555 North State Line Avenue in Texarkana, Arkansas. Brochures, maps, and booklets are available for visitors.

DINE ON THE LINE

During the fall, Main Street Texarkana hosts its annual Dine on the

Line special event which features a unique dining experience on State Line Avenue, between the Federal Courthouse and Broad Street. With one half of the long table in Texas and one half in Arkansas, the residents of the Twin Cities come together to celebrate the history of the two towns.

DOWNTOWN TEXARKANA MURAL AND WALKING TOURS

Downtown Texarkana is the site of mural tours and walking tours during the fall and spring. The tours encompass many of Texarkana's points of interest, including museums, the Kress Gap murals, and other unique destinations.

FEDERAL COURTHOUSE AND U.S. POST OFFICE

Straddling the Texas/Arkansas state line is the Federal Courthouse and U.S. Post Office, located in Downtown Texarkana. It is only fitting that visitors stop by this popular landmark to have their photo taken at "Photographer's Island" where you can stand in two states at one time.



FOUR STATES FAIR ENTERTAINMENT CENTER & FAIRGROUNDS

Located in Texarkana, the Four States Fair Entertainment Center & Fairgrounds is home to the annual Four States Fair & Rodeo. Activities for all ages include amusement rides, a demolition derby, monster truck show, and much more. Throughout the year, the Entertainment Center & Fairgrounds hosts many events, including barrel races, horse shows, banquets, and cattle shows.

The Agricultural Learning Center at the fairgrounds promotes dairy education and agricultural awareness for children. Open year-round for educational programs for groups of children of all ages, the center provides a fun interactive way for children to learn about the importance of dairy and agricultural programs.

HOLIDAY SPRINGS WATER PARK

Crossroads Parkway in Texarkana, Arkansas, is home to Holiday Springs Water Park. The park's attractions include a lazy river, wave pool, water slides, children's pools, sand castle area, and private cabanas. Hours of operation are listed on the Holiday Springs Water Park website, along with ticket information.



5501 Crossroads Parkway,
Photo by Eric Ethridge

MAIN STREET TEXARKANA CHRISTMAS PARADE

Held annually the first Monday in December, the Main Street Texarkana Christmas Parade encompasses two states (Texas and Arkansas) and ends at the Federal Courthouse and U.S. Post Office on State Line Avenue. Held for over 35 years, the parade draws over 100 entries each year with marching bands, floats, antique cars, and a variety of live performers.



Main Street Texarkana Christmas Parade



P.J. Ahern House, 403 Laurel

P.J. AHERN HOUSE

One of the oldest homes in Texarkana, the P.J. Ahern House was built in 1906. Owned by the Texarkana Museums System, the home showcases Classical Revival style and is available for weddings, meetings, and other special events. Tours are also available of the Ahern House, as well as other TMS properties, including the Museum of Regional History, Ace of Clubs House, and Discovery Place.

THE RAIL YARD ENTERTAINMENT DISTRICT

The Rail Yard Entertainment District in Texarkana, Arkansas spans a 14-block area in downtown. Restaurants and bars located within the confines of this special district include: 1873 Club, B&J Downtown Diner, Crossties, Downtown Billiards, Frozen Rail, The Flying Crow, Graham Slam Bakery, Hopkins Ice House, Johnnie B's, Railyard Saloon, TLC, Twin City Sports Bar, Verona Restaurant, and Zapata Mexican Grill & Cantina.



Downtown Texarkana

RUN THE LINE HALF MARATHON

Known as the largest half marathon in southwest Arkansas, this race starts in Texarkana, Texas, and winds through the Twin Cities' parks, trails, and streets to finish in downtown Texarkana, Arkansas. The event benefits Partnership for the Pathway, an all-volunteer, nonprofit organization dedicated to building a safe pedestrian and bicycle trail system in the Texarkana area.



TSO Performing at the Perot Theatre, 221 Main Street

TEXARKANA SYMPHONY ORCHESTRA

Founded in 2006, the Texarkana Symphony Orchestra is a professional symphony orchestra, whose mission is to bring great symphonic music to Texarkana through excellence in live performance and education. With most performances held in the historic Perot Theatre, TSO presents a series of classical masterworks, symphonic pops, and education concerts during its season, held September-May.

TEXARKANA WELCOME CENTER

Tourist and travel information about The Natural State can be found at the Texarkana Welcome Center located at 10000 I-30 East in Texarkana, Arkansas. Pamphlets, maps, and brochures are plenti-

ful, while computer kiosks, WiFi, and fresh coffee are available for visitors.

THREE CHICKS FEED, SEED & CAFE

Locally owned and operated in Texarkana, Arkansas, Three Chicks Feed, Seed & Cafe, located at 4045 Genoa Road, is a destination hot spot. For a unique and fun experience, come visit the animals, enjoy a wonderful lunch, swing on the front porch, pick up local honey or canned goods, and shop for unique gifts.



Dine on the Line

EAT. PLAY. EXPLORE.

GREAT FOOD, MUSEUMS, LOCAL ART GALLERIES AND MORE
AWAIT IN HISTORIC DOWNTOWN TEXARKANA, ARKANSAS

Explore the many parks, museums, local eateries
and attractions Texarkana, Arkansas, has to offer!
Find it all at www.ourtexarkana.com



Drinks and Great Food



Art Galleries



Nightlife



History



Fine Dining

Work Hard Play Hard

...
in **TEXARKANA, USA**

*Photo taken at Kress Gap murals
in downtown Texarkana*



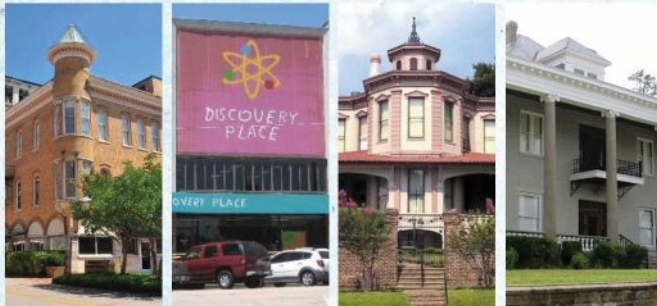
TEXARKANA USA REGIONAL CHAMBER OF COMMERCE

819 N. Stateline Ave. | Texarkana, USA 75501 | 903-792-7191 | www.texarkana.org

Made possible with support from the City of Texarkana Texas and Texarkana Arkansas A&P Commission



YOUR CHANCE TO DISCOVER SOUTHWEST ARKANSAS



The Texarkana Museums System is home to four fascinating ways to explore Texarkana's past, present and future. The Museum of Regional History, the Discovery Place Children's Museum, the Draughon-Moore "Ace of Clubs" House, and the P.J. Ahern Home in historic downtown Texarkana.



www.texarkanamuseums.org | PLEASE CALL FOR SPECIAL GROUP RATES
P.O. BOX 2343 | TEXARKANA, USA 75504 | (903) 793-4831



**LOCAL
HARDWARE,
GIFTS & MORE**

BBQ Grills • Unique Gifts
Sauces, Spices & Rubs
Local Products • Garden Finds
Hard-to-Find Tools • Pet Supplies
Natural Cleaning & More!



903-838-0059

3411 RICHMOND ROAD
TEXARKANA, TEXAS



www.dotsacehardware.com

NEVADA COUNTY

Rich in natural resources like timber, oil, lakes and rivers, Nevada County is located in the southwestern part of the state of Arkansas. It is the 63rd county in Arkansas and was formed in 1871 from portions of Hempstead, Ouachita, and Columbia Counties. It was named after the state of Nevada because of their physical similarities. Prescott is the county seat of Nevada County, and other towns include Bluff City, Bodcaw, Cale, Emmet, Rosston and Willisville.

DORCHEAT BAYOU

A 122-mile stream, Dorcheat Bayou begins in Nevada County and flows into Louisiana. Popular because of its natural beauty, Dorcheat Bayou is a draw for all fishermen.

LITTLE GRAND CANYON

On the northern side of White Oak Lake, right past the dam, sits Little Grand Canyon. Definitely worth the drive, this area features beautiful sand and rock formations with many vantage points and is the perfect spot for a picnic.

NEVADA COUNTY DEPOT & MUSEUM

Located in Prescott, the Nevada County Depot & Museum dates back to 1911. Photo collections, cemetery surveys, and historical censuses are housed in the museum.



403 West 1st Street South

PRAIRIE D'ANE BATTLEFIELD

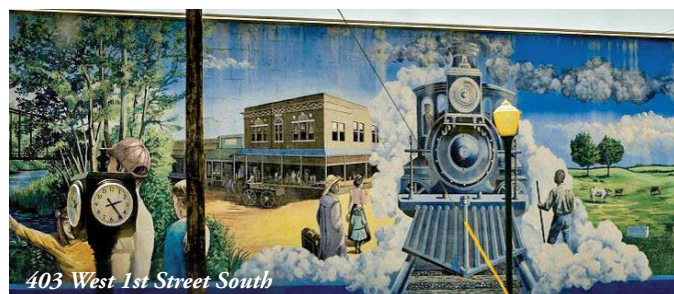
The Prairie D'Ane Battlefield, near Prescott, was the scene of heavy skirmishes during the spring of 1864, when Southern soldiers sought to drive the Union soldiers toward the Red River. The pasture land still looks much as it did in 1864. It was declared a National Historic Landmark in 1994.

PRESCOTT FALL FESTIVAL AND TRADE DAYS

In the fall, the Prescott-Nevada County Chamber of Commerce hosts its Fall Festival and Trade Days on the lawn of the Nevada County Courthouse. A great pumpkin treasure hunt is held for kids, and activities include a 5K run/walk, pie eating contest, food vendors, arts & crafts, basketball tournament, and games.

PRESCOTT MURAL

Have your photo taken beside the colorful mural in Downtown Prescott. The images in the artwork depict historical items related to Prescott, including an old iron bridge, a railroad, Prairie D'Ane Battlefield, and the wildlife industry.



PRESCOTT RACEWAY

Prescott Raceway brings drag racing excitement to Nevada County. A member of the IHRA, International Hot Rod Association, the raceway is located at 5121 Highway 53 in Prescott.

WHITE OAK LAKE STATE PARK

Bluff City is home to White Oak Lake State Park, which offers 2,765 acres of bass, crappie, catfish, and bream fishing. Also a great place for bird sightings, the park offers RV camping, boat rentals, picnic sites, a playground, and walking trails.



Prescott Nevada County

Visit Prescott-Nevada County for
outdoor recreation and historic sites.



Visit Prescott-Nevada County for outdoor recreation and historic sites. Shop in our downtown area and browse through our shops or enjoy a picnic in our city park. Have your picture made in front of the historic mural or spend some time at the Nevada County Depot Museum. While you are here, make sure to visit the Nevada County Farmers Market and our Fall Festival & Trades Day, the 2nd weekend of October each year.

From fishing and camping at White Oak Lake State Park to drag races at the Prescott Raceway Park, we know you'll have a great time! Just take Exit 44 or 46 off of Interstate 30 and see what Prescott and Nevada County have to offer.

For an upcoming events calendar and additional community information, visit our website at www.prescottar.com

**Prescott/Nevada County
Economic Development Office**
870.887.6208
116 East 2nd St. South
Prescott, AR 71857

**Prescott/Nevada County
Chamber of Commerce**
870.887.2101
125 East Main St.
Prescott, AR 71857



SEVIER COUNTY

Scenic beauty and outdoor recreation draw many visitors to Sevier County, which was established in 1828. Known as the “Land of the Lakes,” Sevier County sits among a complex of reservoirs in both Arkansas and Oklahoma. De Queen is the county seat, and other cities in Sevier County include Lockesburg, Horatio, Gillham, and Ben Lomond.

DE QUEEN LAKE

Located on the Rolling Fork River, De Queen Lake provides flood control, water supply, water quality, recreation, and fish and wildlife enhancement. The U.S. Army Corps of Engineers began constructing the lake in 1966 and began operations in 1977. Three campgrounds (Bellah Mine, Oak Grove and Pine Ridge), six boat ramps, three swimming areas (Oak Grove, Rolling Fork, and Story Creek), and numerous picnic areas are an outdoor enthusiast's dream.

GILLHAM LAKE

Boating, canoeing, fishing, swimming, picnicking, and hiking are found at Gillham's five recreation areas. Five boat ramps, three campgrounds, two picnic shelters, and a designated swimming area draw visitors to this lake. Big Coon Creek, Cossatot Reefs, and Little Coon Creek offer great camping opportunities. Fishing on the 1,370 acre reservoir offers excellent bass fishing while canoeing and flyfishing on the Cossatot River are also popular.



Gillham Lake, Photo by: Jayna Regan

POND CREEK NATIONAL WILDLIFE REFUGE

In the floodplain between Ashdown and De Queen, Arkansas, lies the Pond Creek National Wildlife Refuge. Its primary use is for migratory and resident waterfowl, neo-tropical migratory birds, wading birds, and other wetland-dependent wildlife. Camping, fishing, hunting and wildlife observation and photography are abundant here as well as six primitive campsites.



Pond Creek National Wildlife Refuge

De Queen, Dierks & Gillham Lake
Fishing Headquarters of AGSW



ARKANSAS
& SEVIER COUNTY



DE QUEEN AND SEVIER COUNTY
ARE THE HEART OF TRI-LAKES COUNTRY!

At De Queen, Dierks and Gillham Lakes, you'll find fishing, fun, camping and water sports, along with your favorite accommodations. Experienced paddlers can take on the white-water challenge of the scenic Cossatot River nearby. While visiting De Queen, explore the area's history at the Sevier County Museum. Athletes can find plenty of competition at the Hwy. 70 West Sportsplex and Herman Dierks Park. Three walking trails offer a choice of surfaces when walking for fun or fitness. For a walk on the wild side, check out the Pond Creek National Wildlife Refuge.



DE QUEEN -SEVIER COUNTY
CHAMBER OF COMMERCE

P.O. Box 67 • DE QUEEN, AR 71832 • (870) 584-3225

SPONSORED BY: CITY OF DE QUEEN AND SEVIER COUNTY



WHAT & WHERE IN THE GREAT SOUTHWEST

CAMPGROUNDS

Hope Fair Park RV Park	P.O. Box 596, Hope, 71801	870-777-7500
Four States Fairgrounds	Loop 245, Texarkana, 71854	870-773-2941

CITIES / COUNTIES / CHAMBERS OF COMMERCE

Bradley Chamber of Commerce	P.O. Box 662, Bradley, 71826	870-894-3935
City of Ashdown	250 N. Second St., Ashdown, 71822	870-898-2622
City of De Queen	P.O. Box 67, De Queen, 71832	870-584-3445
City of Foreman	200 Schuman St, Foreman, 71836	870-542-7434
City of Hope	P.O. Box 596, Hope, 71802	870-777-6701
City of Nashville	426 N. Main, Nashville, 71852	870-845-7400
City of Prescott	P.O. Box 676, Prescott, 71857	870-887-2210
De Queen Chamber of Commerce	315 W Stillwell, De Queen, 71832	870-584-3225
Dierks Chamber of Commerce	P.O. Box 292, Dierks, 71833	870-845-7774
Hope/Hempstead County Chamber of Commerce	P.O. Box 250, Hope, 71802	870-777-3640
Hempstead County Courthouse	400 S. Washington, Hope, 71801	870-777-6164
Howard County Courthouse	421 N. Main St., Nashville, 71852	870-845-7508
Lafayette County Courthouse	1 Courthouse Sq., Lewisville, 71845	870-921-4858
Lewisville City Hall	330 W 1st St., Lewisville, 71845	870-921-4971
Little River Chamber of Commerce	P.O. Box 160, Ashdown, 71822	870-898-2758
Little River County	351 N. Second, Ashdown, 71822	870-898-7202
Miller County Courthouse	400 Laurel St., Texarkana, 71854	870-774-1501
Murfreesboro Chamber of Commerce	P.O. Box 166, Murfreesboro, 71958	870-285-3131
Nashville Chamber of Commerce	107 S. Main, Nashville, 71852	870-845-1262
Nevada County Courthouse	P.O. Box 68, Prescott, 71857	870-887-3115
Prescott-Nevada County Chamber of Commerce	116 E. 2nd St., Prescott, 71857	870-887-2101
Sevier County Courthouse	115 N. 3rd St., De Queen, 71832	870-642-2425
Sevier County Tourism Commission	P.O. Box 971, De Queen, 71832	870-584-3225
Stamps Chamber of Commerce	P.O. Box 274, Stamps, 71860	870-533-4771
Texarkana Chamber of Commerce	P.O. Box 1468, Texarkana, 75501	903-792-7191

FAIRS & RODEOS

Little River County Fair & Rodeo	209 S. Madden, Foreman, 71836	870-542-7311
Four States Fair & Rodeo	3700 E. 50th, Texarkana, 71854	870-773-2941
Southwest Arkansas Fair & Rodeo	P.O. Box 397, Hope, 71801	870-777-5111

MUSEUMS / THEATRES / CENTERS

Ace of Clubs House	420 Pine Street, Texarkana, 75501	903-793-4831
Discovery Place Children's Museum	215 Pine Street, Texarkana, 75501	903-793-4831
Four States Fair Ag Learning Center	3700 E. 50th St., Texarkana, 75504	870-774-6455
Hempstead Hall	2500 South Main Street, Hope, 71801	870-722-8565
Hope Visitor Center/Museum	100 E. Division, Hope, 71801	870-722-2580
Cairo Fulton Depot and Klipsch Garden	200 E. Division, Hope, 71801	870-777-7500
LRC Museum Hunter/Coulter House	310 N. Second, Ashdown, 71822	870-898-7242
Nevada County Depot Museum	400 West 1st St., Prescott, 71857	870-887-5821
Perot Theatre	P.O. Box 1171, Texarkana, 75504	903-792-4992
President William Jefferson Clinton Birthplace Home	S. Hervey & 2nd St., Hope, 71802	870-777-4455
Regional Arts Center	321 W. 4th Street, Texarkana, 75504	903-792-8681
Rocky Comfort Museum	507 E. 3rd Ave., Foreman, 71836	870-542-7887
Sevier County Historical Museum	717 Maple, De Queen, 71832	870-642-6642
Tex-Ark Antique Auto Museum	217 Laurel St., Texarkana, 71854	870-772-2886
Texarkana Museum of Regional History	219 N. State Line Avenue, Texarkana, 75501	903-793-4831
Two Rivers Museum	East Main Street, Ashdown, 71822	870-898-3147
Will Reed Farm House	Alleene Hwy. 324, Alleene, 71820	870-542-6360

PARKS

Arkansas State Parks	One Capitol Mall, Little Rock, 72201	888-287-2757
Bobby & Sue Dowd Broad Street Pocket Park	102 East Broad Street, Texarkana, 71854	870-774-2120
Conway Cemetery State Park	Hwy. 160, Bradley, 71826	888-287-2757
Cossatot River State Park - Natural Area	960 Hwy. 4 East, Wickes, 71973	870-385-2201
Crater of Diamonds State Park	209 State Park Road, Murfreesboro, 71958	870-285-3113
DeGray Lake Resort State Park	Rt. 3 Box 490, Bismarck, 71929	800-737-8355
Historic Washington State Park	P.O. Bo 129, Washington, 71862	870-983-2684
Hope Parks & Tourism	P.O. Box 667, Hope, 71802	870-777-7500
Millwood State Park	1564 Hwy. 32 East, Ashdown, 71822	870-898-2800
Nashville Parks & Recreation	1301 W. Johnson, Nashville, 71852	870-845-7405
Pioneer Washington Restoration Foundation	P.O. Box 127, Washington, 71862	870-983-2828
Prescott Parks & Recreation	120 E. Ross, Prescott, 71857	870-887-3176
Southwest Arkansas Regional Archives	Box 134, Washington, 71862	870-983-2633
White Oak Lake State Park	563 Hwy. 387, Bluff City, 71722	870-685-2748

Nashville

ARKANSAS

Sharing the Hometown Feeling

COSSATOT RIVER

Enjoy this state park natural area's day-use facilities with picnic sites and trails; a must for expert canoeists and kayakers.

CRATER OF DIAMONDS

At this Arkansas State Park you can hunt for diamonds and other gemstones and keep what you find.

DOWNTOWN NASHVILLE

This Commercial Historic District is now listed on the Arkansas Historic Register

NASHVILLE CITY PARK

165 acre city park that includes a large amphitheater/stage for outdoor concerts and events; softball complex, baseball complex, tennis courts, soccer fields, fishing pond, walking trails, two pavilions, playground, volleyball court and skate park.

LAKE MILLWOOD

Gillham and Dierks Lakes
Largemouth bass fishing lures visitors to our popular lakes and Arkansas State Parks

HOWARD COUNTY FARMER'S MARKET IN NASHVILLE

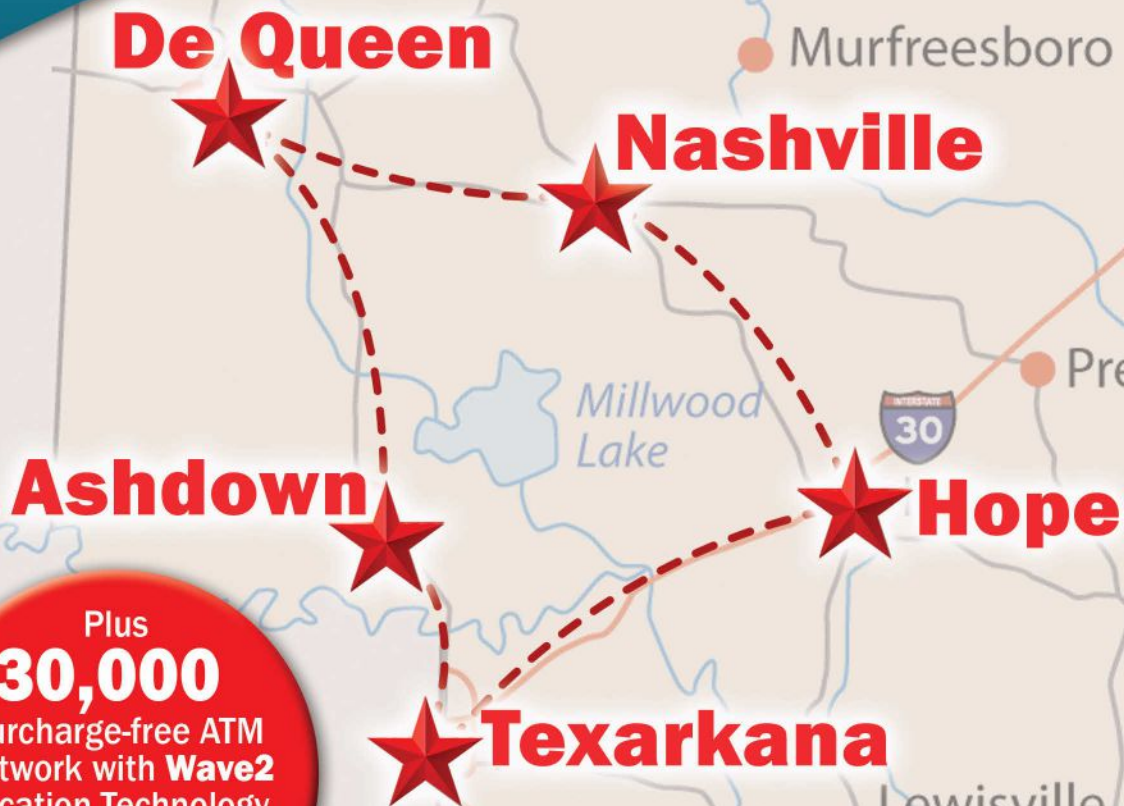
Contact the Chamber of Commerce for Operating Hours/Dates

Nashville Chamber of Commerce
107 S. Main | Nashville, AR 71852
870.845.1262
www.nashvillear.com



We are where YOU want to be

For All Your Banking Needs



Plus
30,000
Surcharge-free ATM
Network with **Wave2**
Location Technology
Available at rrfcu.com
and our Mobile
App!

Red River 
CREDIT UNION

903-735-3000 | www.rrfcu.com | Hablamos Español | Federally Insured by NCUA