



THE 2026

Recycler

La Crosse County Solid Waste System

www.lacrossecounty.org/solidwaste

SERVING

La Crosse County WI,
Houston County MN, and
Surrounding Counties

**Please Keep
For Future
Reference!**



for more
information
scan QR code

NEW:

**In 2026,
the minimum
fee on
transactions
is \$10**



The Reuse room has
moved, please check
map for relocation.

Styrofoam Recycling



The Department, in partnership
with Hilltopper Refuse and
Recycling, will be accepting
Polystyrene (Styrofoam) foam for
recycling. Standard disposal fees
apply if dropped off at the landfill
drop-off site.

FREE drop off available at
Hilltopper Refuse & Recycling &
7 Rivers Recycling. Please call
608-783-6727.

**For missed pick ups of trash
or recycling, please call your
waste hauler
or municipality.**

Landfill Hours of Operation:

Summer Hours: April - October

Monday – Friday:
6:30 AM – 4:30 PM
1st and 3rd Saturdays:
9:00 AM – Noon

Winter Hours:

November - March
Monday – Friday:
7:00 AM – 4:00 PM

Office Hours and Reuse Room Hours:

Monday – Friday:
8:00 AM – 4:00 PM



Landfill Fees: All items have a \$10 minimum fee

Residential Drop-off Area: \$10 minimum or \$120 per ton

- **Garbage** (normal household waste)
- **Large Items** (furniture, toys, bikes, stoves, grills, washers, dryers)
- **Demolition/Constuction** (wood, drywall, flooring, roofing, doors, windows, etc.)
- **Any small engine** must be drained of all fluids before drop off.

Processing Pad: \$10 minimum or a per ton fee

For pricing visit: www.lacrossecounty.org/solidwaste

Landfill: \$15 fee and \$65 per ton

Mattresses: \$13+ weight

Freon Items: \$10 + weight

(refrigerator, freezer,
air conditioner, de-humidifier)

Brush/Clean Wood: \$36/ton

(wood that has not been painted,
stained, or treated).

**We accept cash, check, and
credit/debit cards.
A fee will be added to use
credit/debit cards:**

- **\$1.95 on \$66.12 or less**
- **2.95% on \$66.13 or more**

WE ARE NOT AFFILIATED WITH ISLE LA PLUME

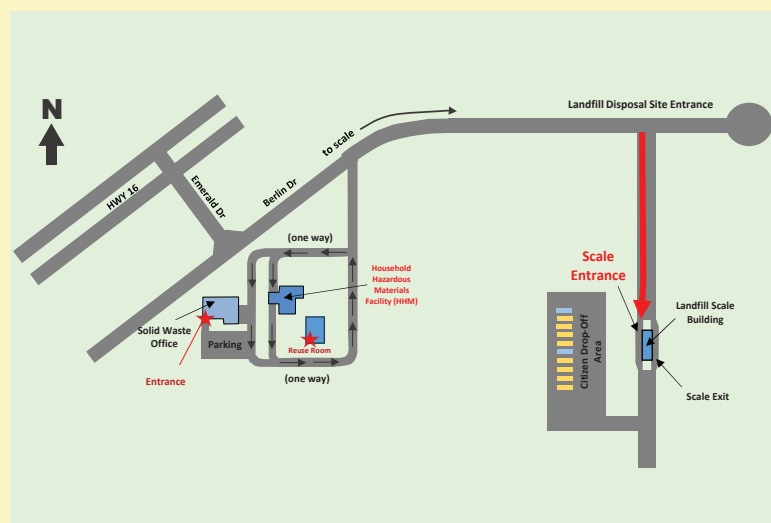
Only people authorized by site attendants may utilize the landfill facility. You must provide your own labor for unloading materials. Due to safety concerns, we do not permit salvaging once waste is placed into containers.

Information and Directions

PLEASE READ SIGNAGE

The Landfill's address is 3240 Berlin Drive. The diagram to the right illustrates the entrance to our facility (the landfill is the second right on Berlin Drive). The landfill entrance is equipped with inbound and outbound scales – **all landfill customers must scale in and out**. Department staff are available at the scale to direct you on disposal options and collection of payment.

For mailing, billing, and other departmental questions our office is located at 3200 Berlin Drive (first right on Berlin Drive) and parking is available on the south side of the building. We can also be reached at (608) 785-9572.



Landfill Disposal Site: 3240 Berlin Dr. La Crosse, WI 54601
HHM Disposal Site: 3202 Berlin Dr. La Crosse, WI 54601
Office: 3200 Berlin Dr. La Crosse, WI 54601
For questions please call 608-785-9572

Municipality Contacts:

La Crosse County
608-785-9572 www.lacrossecounty.org
Houston County
507-725-5800 www.co.houston.mn.us
City of La Crosse
608-789-7508 www.cityoflacrosse.org
City of Onalaska
608-781-9500 www.onalaskawi.gov
Town of Bangor
608-461-0554 www.townofbangor.com
Village of Bangor
608-486-4084 www.villageofbangorwi.gov
Town of Burns
608-486-4272 www.townofburnswi.com
Town of Campbell
608-783-0050 www.townofcampbellwi.gov

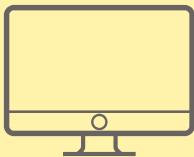
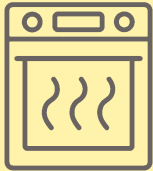
Town of Farmington
608-792-7034 www.townoffarmingtonlax.org
Town of Greenfield
608-452-4700 www.greenfieldlaxwi.gov
Town of Hamilton
608-786-4489 www.townofhamiltonwi.org
Town of Holland
608-526-3354 www.townofhollandwi.gov
Village of Holmen
608-526-4336 www.holmenwi.gov
Town of Medary
608-781-2275 www.townofmedary.wi.gov
Town of Onalaska
608-783-4958 www.townofonalaska.org
Town of Shelby
608-788-1032 www.townofshelbywi.gov
Village of West Salem
608-786-1858 www.westsalemwi.gov

Appliance Disposal

\$20.00 per appliance

Major appliances are defined as:

- Refrigerators
- Stoves
- Ovens
- Freezers
- Dishwashers
- Clothes washers and dryers
- Dehumidifiers
- Air conditioners
- Furnaces
- Boilers
- Water heaters
- Microwaves
- Computers
- Televisions



Pay at site-\$20 per item.

Appliances may also be taken to: **Runde Metal Recycling LLC, 643 Commerce St., Holmen, WI**

Computers and other electronic devices may also be taken to **La Crosse County’s Household Hazardous Materials site—see outside of this brochure for location and hours.**

Contact Information

Town of Farmington
Dennis Konze,
Solid Waste & Recycling Manager,
608-857-3095 or

Mike Hesse, Chairman
mhesse@farmingtonlaxwi.gov
608-780-3391 608-857-3139

Crystal Sbraggia, Clerk
csbraggia@farmingtonlaxwi.gov
608-780-4778

La Crosse County Landfill and Household Hazardous Materials Facility (HHM)
3200 Berlin Dr, La Crosse
Phone: 608-785-9572

You will receive a brochure at the beginning of each year, so please keep this brochure! If you misplace it, please call 608-780-3391 or 608-857-3095 for a new one.

Website:
townoffarmingtonlax.org

Location

W3765 County Road DE (on the east side of Mindoro next to the Town highway shop).

Days & Hours (also see calendar opposite)

Sat: 8 a.m. to noon Tues: 1 p.m. to 5 p.m.

If a holiday lands on a Tuesday the center will be open the following Wednesday; if a holiday lands on a Saturday (including the opening of deer gun season), the center will be open on the Friday before the holiday, from 1PM to 5PM.

The Town of Farmington operates this center on user fees. The goal is to be self-supporting and not rely on property taxes.

NOTE: When entering the recycling area, please abide by all rules and signs. Traffic flows counter clockwise around the compactor. For the safety of other residents and staff, please do not enter in the opposite direction.

Solid Waste (Garbage)

Regular garbage shall be placed into the compactor. For every 30 gallon bag (< 30 lbs) a fee of \$2.00 is charged. Bags should be transparent and can be purchased at most retailers. Larger or heavier bags are subject to higher fees.

NO private slaughter or hunting wastes allowed. Please dispose of such waste at the county landfill (see back page of brochure).

Additional Items including furniture, mattresses, carpet, bathroom fixtures, and all private demolition materials should be placed into the coordinating collection bin located inside the recycling center. A \$15 fee is due for all mattresses. Fees for all other items will be assessed at drop off and will be based on estimated weight.

Silo Bags and other plastic films that are reasonably clean will be accepted and subject to a \$15 fee per bag. Bags should be cut into 10 foot sections. A prepay option is available.

Free Recycling-NO FEE

PAPER: items including newspapers, books, magazines, copy paper, junk mail and shiny inserts can be bundled together using paper bags (no plastic bags please).

CARDBOARD: items including cereal boxes should be empty, clean and broken down. Pizza boxes, packaging peanuts, bubble film and coated cardboard are not accepted and should be placed into compactor.

COMMINGLE: items including glass jars and bottles, empty aerosol, steel and aluminum cans plus #1, #2 and #5 plastics are accepted (see details page 3). The following are NOT accepted and should be placed into the compactor as a regular garbage item: plastics #3 through #7, standard light bulbs, dishes, glassware, window or auto glass, porcelain, ceramics, and microwave trays.

METAL: items can be placed into metal collection bin located outside adjacent to the building.

PLEASE HELP KEEP RECYCLING BINS FREE OF UNACCEPTABLE ITEMS

The above items are commodities like oil and corn and are sold to help cover costs. As markets change, recycling items and methods may change.

Recycling-FEE

YARD & GARDEN WASTE: are accepted in bundles of 2ft x 2ft x 5ft and cost \$2.00 each. Amounts and types are limited. Only vegetative items allowed. No garbage, rocks, concrete or soil accepted. Brush and limbs must be no larger than 4 inches in diameter or 5 feet long. Watch signs for limited collection period dates.

APPLIANCES AND ELECTRONICS: are subject to a \$20 fee. Please see acceptable items list.

TIRES are accepted and subject to fees ranging from \$3 - \$20.00 depending on size. Car tires mounted on rims cost an additional \$3.00 each.

FLORESCENT LIGHT BULBS are accepted and can be placed into the coordinating bin located inside the recycling center. A \$1.50 fee per bulb applies.

Helpful Hints

The following do not qualify as recyclable items and should be placed into your regular garbage: incandescent light bulbs, ceramics, dishes, glasses, and mirrors.

Ashes from wood furnaces and burn barrels are not accepted and should be disposed on your own property.

Open Burning

With a valid burning permit*, Town of Farmington residents are allowed to burn dry leaves, plant materials and brush.



*Permits may be cancelled or prohibited by the Fire Chief or Town Chairman based on risk assessment.

OPEN BURN PERMITS CAN BE OBTAINED DURING REGULAR BUSINESS HOURS AT:

Allied Cooperative’s Mindoro Country Store
N8319 County Rd C
Mindoro, WI 54644
P: 608-857-3414

About Agricultural Plastics

Material Description

The term “agricultural plastics” (or “ag plastics”) covers a wide variety of products and plastic types. These include:

- **Low density polyethylene (LDPE)** and **low linear density polyethylene (LLDPE)** film used to make silage and haylage bags, bunker silo covers, greenhouse covers, bale wrap, mulch film, and other flexible products.
- **High density polyethylene (HDPE)**, a more rigid plastic used in pesticide containers and nursery pots.
- **Polystyrene (PS)**, another rigid plastic used in nursery containers and flats.
- **Polypropylene (PP)**, used in nursery pots, row covers and woven tarps.

Plastic products are used for an increasing number of purposes in agriculture and at nurseries and greenhouses because of their durability, flexibility and low costs. Dairy industry experts estimate that approximately 15 to 20 pounds of all types of ag plastics a year are used per cow. A 300-head dairy farm using plastic silage bags may produce as much as 6,000 pounds a year of waste plastic.

& Recycling Center—2026 Schedule3

Drop-Off
Dates for
Solid Waste
& Recycling
Center

If you have
questions or
concerns,
please call
608-857-3095

JANUARY 2026	FEBRUARY 2026	MARCH 2026	APRIL 2026
S M T W T F S	S M T W T F S	S M T W T F S	S M T W T F S
1 2 3 4 5 6 7	1 2 3 4 5 6 7	1 2 3 4 5 6 7	1 2 3 4
8 9 10 11 12 13 14	8 9 10 11 12 13 14	8 9 10 11 12 13 14	5 6 7 8 9 10 11
15 16 17 18 19 20 21	15 16 17 18 19 20 21	15 16 17 18 19 20 21	12 13 14 15 16 17 18
22 23 24 25 26 27 28	22 23 24 25 26 27 28	22 23 24 25 26 27 28	19 20 21 22 23 24 25
29 30 31		29 30 31	26 27 28 29 30
MAY 2026	JUNE 2026	JULY 2026	AUGUST 2026
S M T W T F S	S M T W T F S	S M T W T F S	S M T W T F S
1 2 3 4 5 6 7	1 2 3 4 5 6	1 2 3 4	1
8 9 10 11 12 13 14	7 8 9 10 11 12 13	5 6 7 8 9 10 11	2 3 4 5 6 7 8
15 16 17 18 19 20 21	14 15 16 17 18 19 20	12 13 14 15 16 17 18	9 10 11 12 13 14 15
22 23 24 25 26 27 28	21 22 23 24 25 26 27	19 20 21 22 23 24 25	16 17 18 19 20 21 22
29 30 31	28 29 30	26 27 28 29 30 31	23 24 25 26 27 28 29
			30 31
SEPTEMBER 2026	OCTOBER 2026	NOVEMBER 2026	DECEMBER 2026
S M T W T F S	S M T W T F S	S M T W T F S	S M T W T F S
1 2 3 4 5	1 2 3	1 2 3 4 5 6 7	1 2 3 4 5
6 7 8 9 10 11 12	4 5 6 7 8 9 10	8 9 10 11 12 13 14	6 7 8 9 10 11 12
13 14 15 16 17 18 19	11 12 13 14 15 16 17	15 16 17 18 19 20 21	13 14 15 16 17 18 19
20 21 22 23 24 25 26	18 19 20 21 22 23 24	22 23 24 25 26 27 28	20 21 22 23 24 25 26
27 28 29 30	25 26 27 28 29 30 31	29 30	27 28 29 30 31

Center Dates: Holidays
(Center not open)

How to Prepare Recyclables

GLASS:
Jars and bottles only!

SEE NON-ACCEPTABLE
MATERIALS BELOW

- PLEASE RINSE & CLEAN



TIN & ALUMINUM

Bottles and Cans:

Pots & pans, empty paint & aerosol cans, aluminum foil, or steel cans

- NO chemicals, scrap metal, or vehicle parts, electronics
- Empty, rinse clean. Ends of cans can stay attached.

PLASTIC:

Accepted plastics:
(bottle form only) #1 #2

#5 food containers (yogurt, cottage cheese, etc.).

DO NOT recycle plastic bags, or to-go food containers (clam shell)

- PLEASE RINSE & CLEAN



FOOD & BEVERAGE

CARTONS:

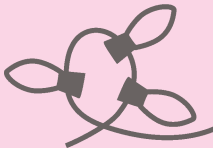
Milk, juice, broth, soup, and other

- Drain liquid.
- Beverage Paper cups (no lids or straws)

- PLEASE RINSE & CLEAN



WIRES:
Christmas lights, extension cords and power cords



Paper and Cardboard: Newspapers, magazines, cereal, soda and beer boxes, paperback books, phone books, paper bags, mail/junk mail. Cardboard boxes must be broken down.



Non-Acceptable Materials for Curbside Recycling - Plastic bags, kitchen garbage bags, photographs, styrofoam (see county section of flyer), regular trash, yard waste, specialty bulbs (small incandescent/LED can go in trash), dishes, ceramic, mirrors, wood or demolition materials, computer/larger electronics, large carpet rolls, full aerosol cans and wet paint containers, (empties can go in regular trash). Car batteries accepted separately.

NOTE:

For More Information Visit www.hilltopperrefuse.com



About Agricultural Plastics
(Continued)

Environmental Impacts

Burning plastic (which is illegal in Wisconsin) can release toxic and potentially cancer-causing chemicals into the air, where they can be inhaled by humans and animals and deposited in soil and surface water. Residue from burning contaminates the soil and groundwater and can enter the human food chain through crops and livestock. In addition, certain chemicals released by burning can accumulate in the fats of animals and then in humans as we consume meat, fish, and dairy products. Because agricultural burning often occurs near food sources, it is particularly important to reduce this health hazard to food production.

Some of the most dangerous chemicals created and released during burning some types of plastic are **dioxins** and **furans**, many of which are highly toxic. **Dioxins**, which are byproducts formed when chlorine-containing

products are burned, tend to adhere to the waxy surface of leaves and then enter the food chain. Even if certain types of plastic (such as polyethylene or polypropylene) do not contain chlorine, other materials burned with the plastic may be a chlorine source.

Other chemicals released while burning plastics include **benzo(a)pyrene (BAP)** and other **polycyclic aromatic hydrocarbons (PAHs)**, which have both been shown to cause cancer. If film or containers are contaminated with pesticides or other harmful substances, those will also be released into the air. If plastics are burned with other materials, additional toxic chemicals may be created from the interaction of the different substances.

Unburned portions of the plastic become litter on the ground and in lakes and rivers. As it disintegrates, animals may eat the plastic and get sick. Larger pieces of plastic can become a breeding ground for diseases, such as by trapping water that provides habitat for mosquitoes.

Plastics Are Too Valuable To Waste

There is a growing worldwide demand for many types of used plastic, which can be reused, recycled, and turned into new products, or in some cases incinerated in controlled conditions to generate energy. The Town of Farmington will accept some agriculture plastics, although we currently have no market to recycle some of these plastics. The Town of Farmington accepts **properly rinsed containers** at no cost.

Ask the attendant which containers are recyclable and which will be sent to Xcel to be converted to energy.



THE 2026 La Crosse County • WI Recycler

For answers to questions, call
La Crosse County HHM program, 608-785-9999
or visit our Website: www.lacrossecounty.org/solidwaste/hhm

Household Hazardous Materials Facility (HHM)

Free for La Crosse County, WI residential users (unless otherwise noted below)
Fees apply to Houston County, MN and surrounding counties

Acceptable Materials

- Automotive fluids
- Batteries (rechargeable, lead acid, lithium)
- Cell phones and digital cameras
- Cleaning products
- Computers (desktops, laptops, tablets)
- Computer peripherals (fax machines, hard drives, keyboards, mice, printers, scanners, speakers)
- Fire extinguishers
- Fluorescent light bulbs
- Lawn and garden chemicals
- Medications (non-controlled only)
- Mercury-containing devices (barometers, thermometers, thermostats, etc.)
- Microwaves and small Freon appliances **Fees Apply**
- Paints, stains, varnish and solvents
- Pool chemicals
- Propane cylinders (20lbs and under)
- Sharps and needles
- Smoke detectors
- Solar Panels (A, B and C)
- TVs and computer monitors **Fees Apply**
- Vape pens/E-cigarettes
- Video devices (cable and satellite receivers, DVD players, gaming consoles, VCRs, etc.)
- Water filters (Point of Contact)

Non-Acceptable Materials

- Compressed gas cylinders (other than propane)
- Controlled substance medications
- Drums (single containers over 30 gal.)
- Explosives (inc. black powder, fireworks, military munitions, and flares)
- Shock sensitive materials (picric acid, etc.)
- Radioactive materials

SAVE YOURSELF A TRIP!

These items can and should go into your regular curbside trash or recycling:

- Alkaline batteries (trash)
- Dried out paint (trash)
- Empty paint and aerosol cans (recycle)
- Fertilizer without pesticide (trash)
- Ice melt and rock salt (trash)
- Incandescent light bulbs (trash)



Preparation & Transportation

Residential Drop-Off Hours

Monday – Friday (year-round): 8:00 a.m. – 4:00 p.m.
1st and 3rd Saturdays (April – October): 9:00 a.m. – Noon

Businesses and organizations by appointment only.

Fees apply by weight to all items for residents who live outside of La Crosse County. There is a \$10 minimum for each transaction.

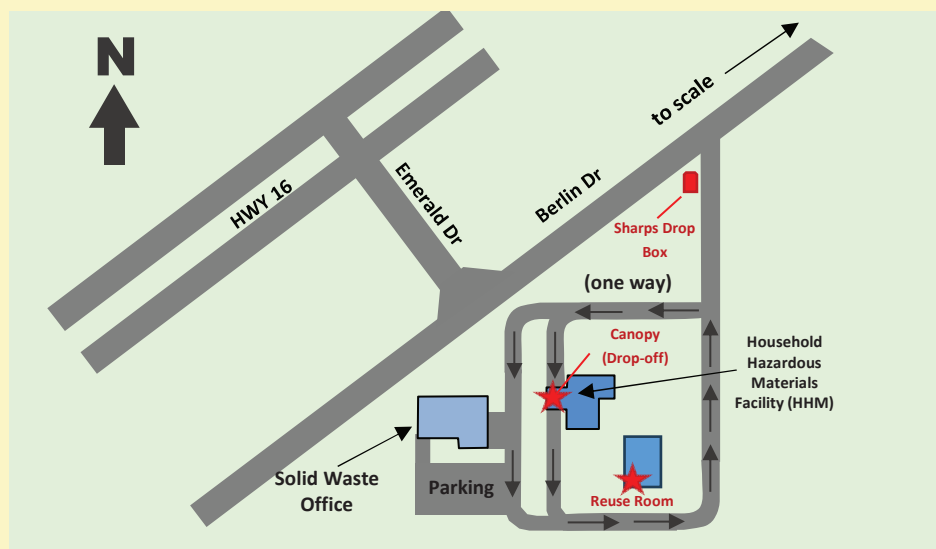
FREE PRODUCT REUSE ROOM!

WE'VE MOVED!

Over 80,000 pounds of useable household products are sorted and made available to the public in our Reuse Room annually. All items are free, but donations are appreciated. The Reuse Room is open Monday – Friday from 8 AM to 4 PM. The reuse room is located on the south side of the building directly adjacent to the HHM Facility. Parking available at the entrance.

Safe Transportation of Hazardous Materials

1. Never mix chemicals.
2. Bring items in original containers or clearly mark contents. Tell facility technician if you are unsure what is in a container.
3. Tighten all covers and lids.
4. If a container is leaking, pack it separately in a leak-proof pail or tub.
5. Avoid spills. Place waste containers upright and place securely in the trunk or back of a truck or van. Do not transport waste containers in vehicle passenger areas.
6. Gasoline should be transported in a designated red safety container.
7. Motor oil should be transported in a durable and leak-proof container labeled with the words “Used Oil.”
8. Tape the terminal ends of batteries with clear tape to prevent sparking. Do not co-mingle batteries with chemicals.
9. Transport fluorescent bulbs securely to avoid breakage. **Do not tape bulbs together.**
10. Upon arrival, pull under the HHM canopy.



3202 Berlin Drive • La Crosse, WI 54601

Sharps & Needles



- Needles, syringes, auto-injectors (EpiPens) and lancets must be transported in sealed, puncture-resistant containers.
- Container options include a standard red sharps container or a thick plastic laundry detergent bottle with screw on cap. All containers must be labeled with the word **“SHARPS.”**
- Additional sharps collection sites can be found on the Alliance to HEAL website. www.alliancetoheal.com
- For after-hours service, a red sharps drop box is located on Berlin Drive at the La Crosse County Solid Waste Department entrance. This drop box accepts single-use needles as well as small sharps containers. (see map above)

Use By Businesses & Organizations

The La Crosse County HHM Program is available to assist small businesses and organizations with their hazardous material disposal needs. For more information, call us at (608) 785-9999 or visit our website to download a VSQG qualification packet. Our pricing for 2026 has changed. Please confirm pricing and acceptability before visiting us.

www.lacrossecounty.org/solidwaste/hhm