

# MERAKI Escape®



## Services & Experiences Price List

*Private spa, wellness, dining, retreats,  
and intimate celebrations for two in Brevard, North Carolina.*

## SPA SANCTUARY

**Meraki Escape does not operate a traditional spa facility;** all spa experiences are private and offered in-cabin or at one of our waterfall locations. *Private waterfall experiences are weather dependent.* **Day Guest Fee of \$50** applies in addition to service pricing. Prices and offerings subject to change.

Experience	Duration	Location	Price	Notes
<b>In-Cabin Couples Massage</b>	60 min	In-cabin	\$425 per couple	Personalized massage using Deep Tissue, Swedish, and Shiatsu techniques.
<b>Extended Couples Massage</b>	90 min	In-cabin	\$575 per couple	More time for deeper work, long-flow massage, warm compresses, and focused attention.
<b>Single Massage</b>	60 / 90 min	In-cabin	\$175 / \$270	For one guest.
<b>Waterfall Massage</b>	Seasonal	Forestsong Waterfall	massage rate plus a \$50 waterfall experience fee	Weather permitting; moved in-cabin for inclement weather.
<b>Sound Bath Experience</b>	60 min	In-cabin	\$160 for 1-2 people	Crystal singing bowls, chimes, and gentle Yoga Nidra designed to support deep rest, grounding, and nervous-system restoration.
<b>Waterfall Sound Bath Ceremony</b>	60 min	Forestsong Waterfall	\$175 for 1-2 people	Multi-sensory ceremony surrounded by creek, forest, and crystal bowls.
<b>Reiki Energy Balancing</b>	60 min	In-cabin or waterfall	\$160 per person	Gentle energy treatment to support grounding, calm, and balance.

## MOVE & BREATHE

Gentle movement, breath, nature, and grounding connection. All spa and wellness experiences are private and offered in-cabin or at one of our waterfall locations. *Private waterfall experiences are weather dependent.* Prices and offerings subject to change.

Experience	Duration	Location	Price	Notes
<b>Private Yoga</b>	60 min	In-cabin or at one of our waterfalls	\$60 private   \$90 for two	Personalized session for beginners or experienced practitioners. Mats, blocks, and blankets provided.
<b>Private Mat Pilates</b>	60 min	In-cabin or at one of our waterfalls	\$60 private   \$90 for two	Mindful movement to strengthen, restore, realign, and support posture and core stability.
<b>Introduction Guided Trail Run</b>	1–1.5 hours / 4–6 miles	Nearby Trails	\$112 private   \$140 for two	Beginner-friendly run with movement awareness, breath, and nature connection.
<b>Intermediate Guided Trail Running Experience</b>	1.5–2 hours / 6–8 miles	Nearby Trails	\$200 private   \$260 for two	Intermediate guided adventure with warm-up, pacing support, and reflective cool-down.
<b>Premium Guided Trail Running Mind-Body Experience</b>	Half day / 10–15 miles	Nearby Trails	\$350 private   \$425 for two	Full-immersion trail experience with intuitive check-ins and post-run stretch or energy reset.

## CALM & RESTORE

Stillness, sound, and spaciousness for the mind and nervous system. All spa and wellness experiences are private and offered in-cabin or at one of our waterfall locations. *Private waterfall experiences are weather dependent.* **Day Guest Fee of \$50** applies in addition to service pricing. Prices and offerings subject to change.

Experience	Duration	Location	Price	Notes
<b>Sound Bath</b>	60 min	In-cabin	\$160 for 1–2 people	Crystal singing bowls, chimes, and gentle Yoga Nidra designed to support deep rest, grounding, and nervous-system restoration.
<b>Waterfall Sound Bath</b>	60 min	Forestsong or Triple Creek Waterfall	\$175 for 1–2 people	Seasonal waterfall version of the sound bath experience.
<b>Guided Meditation with Yoga Nidra</b>	60 min	In-cabin or waterfall	\$115 for 1–2 people	Structured pathway into deep rest, grounding, and ease.
<b>Reiki Energy Healing</b>	60 min	In-cabin or Forestsong Waterfall	\$135 per person	Restorative energy session to clear emotional tension and settle the nervous system.
<b>Intuitive Card Reading</b>	60 min or two 30-min sessions	In-cabin or waterfall	\$90 per 60 minutes or two 30-minute sessions	Guided with intuitive presence using tarot and oracle symbolism as mirrors for insight, emotional ease, and inner balance.

## CREATE & EXPRESS

Playful, intuitive, meditative experiences that invite expression and creativity. All spa and wellness experiences are private and offered in-cabin or at one of our waterfall locations. *Private waterfall experiences are weather dependent.* **Day Guest Fee of \$50** applies in addition to service pricing. Prices and offerings subject to change.

Experience	Duration	Location	Price	Notes
<b>Soul Collage</b>	1.5 hours	In-cabin	\$150 for 1–2 participants	Guided creative process where you craft intuitive collage cards that blend art, spirituality, and introspection to reveal inner wisdom and clarity; all materials included.
<b>Wholesome Canvas — Guided Acrylic Painting</b>	2 hours	In-cabin or Courtyard	\$175 per person	Step-by-step guided painting with room for personal expression; all materials included.
<b>Dream Catcher Workshop</b>	1.5 hours	In-cabin or Courtyard	\$160 per person	Create a dream catcher through a guided, hands-on process using natural and modern materials, intention, and personal symbolism; all materials included.
<b>Copper Sun Catcher Creation</b>	2 hours	In-cabin or Courtyard	\$100 per person	Create a 12–18 inch copper, crystal, and glass bead sun catcher.
<b>Spirit Weaving — Intuitive Vine Weaving</b>	2 hours	In-cabin or Courtyard	\$150 per person	Meditative weaving with grapevine circles or branches; natural elements may be foraged.

## CONNECTION & GROWTH

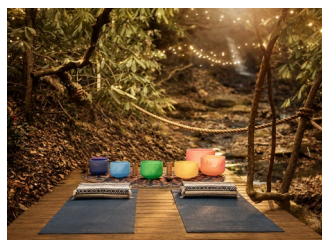
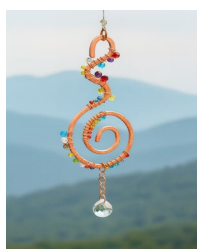
Heart-centered experiences designed to strengthen connection, intimacy, and shared purpose. All spa and wellness experiences are private and offered in-cabin or at one of our waterfall locations. *Private waterfall experiences are weather dependent.* **Day Guest Fee of \$50** applies in addition to service pricing. Prices and offerings subject to change.

Experience	Duration	Location	Price	Notes
<b>Mapping Your Path: Creative Couples Workshop</b>	90 min	In-cabin	\$475 per couple	Art-therapy-informed reflection process to help couples clarify purpose and direction. Facilitated by Emily Owens, MA, LCMHCA, NCC.
<b>Vision Workshop — Illuminate Your Shared Future</b>	2.5 hours	In-cabin	\$640 per couple	Guided visioning session to define shared values, dreams, and relationship direction. Facilitated by Brian Jaudon, master coach.
<b>Two Hearts — A Guided Experience for Couples</b>	2 hours	In-Cabins	\$525 per couple	Step beyond the noise of everyday life into a tender space where gentle breathing and meditative cues help you release old fears and resentment, making way for emotional breakthroughs, deeper intimacy, and a passionate remembering of why you chose each other.

## EXPLORE & DISCOVER

Nature as teacher, guide, and companion. *Outdoor experiences are rain or shine.* Prices and offerings subject to change.

Experience	Duration	Location	Price	Notes
<b>Forage-to-Plate Dining Experience</b>	2.5 hours	On-property / Triple Creek Waterfall	\$649 per couple	1.5 hour educational hike plus 1 hour wild dining experience with Food For Adventures.
<b>Guided Mushroom Hike</b>	2 hours	On-property	\$175 for 1–2 people	Private mushroom identification walk with safe harvesting and preparation guidance.
<b>Edible / Medicinal Herb Walk &amp; Class</b>	2 hours	On-property or offsite	\$175 per person	Hands-on herb hike with herbal tea and wild snacks; offered by Food For Adventures.
<b>Waterfall &amp; Coffee Hike to Schoolhouse Falls</b>	4.5 hours including lunch	Panthertown Valley	\$440 per couple	Private guided hike with transportation, premium coffee at the falls, and picnic lunch offered by Nero Coffee Hikes.



# SPA & WELLNESS POLICIES

## 1. Experience Description:

Meraki Escape spa and wellness sessions provide reserved, private access to wellness services at one of our on-property locations. Overnight guests may enjoy sessions privately in their cabin or at one of our waterfalls or courtyard. Day guests may enjoy sessions at one of our waterfalls or courtyard, based on availability. Meraki Escape does not accept walk-ins and offers spa and wellness sessions by advance reservation only

## 2. Pricing and Fees

Prices do not include tax. A gratuity is not required, as it is already thoughtfully built into our pricing so you can relax without any added expectations. That said, if you feel your experience went above and beyond, additional gratitude for our team is always welcome, though never assumed.

**A Day Guest Fee of \$50** applies in addition to service pricing. See Section 4, Reservations & Payment, and Section 3, Guest Limit, Age Requirement & Third-Party Access, for additional day guest terms.

## 3. Guest Limit, Age Requirement and Third Party Access

This experience is limited to a maximum of two guests. All guests must be 25 years of age or older to participate, unless otherwise approved by Meraki Escape. In no case will a guest younger than 21 be permitted. Guests may be asked to present valid identification to verify age. No additional guests, visitors, photographers, observers, vendors, or third parties are permitted unless approved in advance by Meraki Escape in writing.

## 4. Reservations and Payment

Advance reservations are required and are not confirmed until the required deposit has been received by Meraki Escape. A 50% deposit is required at the time of booking. A non-refundable \$25 Practitioner Reservation Fee is included in the deposit and applies once the reservation is confirmed.

**Overnight Guests:** The remaining balance is due, along with the cabin balance, seven (7) days prior to arrival.

**Day Guests:** The remaining balance is due seven (7) days prior to the scheduled session.

## 5. Cancellation and Rescheduling

Because this experience requires Meraki Escape to reserve a practitioner and remove the date and time from availability for other guests, cancellation terms are strictly enforced. Payment terms are outlined in Section 4, Reservations & Payment

**Overnight Guests:** If a guest cancels 72 hours or more prior to the scheduled service, any eligible refund will be issued minus the non-refundable \$25 Practitioner Reservation Fee and a 3% credit-card processing fee from the original transaction. Cancellations made within 72 hours of the scheduled service are non-refundable. No-shows will be charged in full.

**Day Guests:** If a guest cancels 72 hours or more prior to the scheduled service, any eligible refund will be issued minus the non-refundable \$25 Practitioner Reservation Fee and a 3% credit-card processing fee from the original transaction. Cancellations made within 72 hours of the scheduled service are non-refundable. No-shows will be charged in full. This cancellation policy does not apply when Meraki Escape cancels the experience due to weather pursuant to Section 6, Weather Policy. Meraki Escape will make reasonable efforts to reschedule the experience if availability allows; however, rescheduling is not guaranteed and does not waive, modify, or extend the cancellation policy.

## 6. Weather Policy

**Overnight Guests:** Sessions held outdoors will be moved in-cabin in case of inclement weather, for a cozy, uninterrupted experience.

**Day Guests:** Day guest sessions have no indoor backup location. Meraki Escape will make the final weather determination by 10:00 AM the day prior to your scheduled session. If conditions do not allow the session to proceed, guests may reschedule to another available date or receive a full refund. Once a session is confirmed to proceed following the weather review, it becomes non-refundable. Guest-initiated cancellations due to personal weather concerns are subject to the standard cancellation policy in Section 5.

## 7. Health and Safety

Guests must disclose any injuries, allergies, or medical conditions, including pregnancy, to their practitioner prior to the session. All spa and wellness services are performed by independent practitioners who are solely responsible for assessing, treating, and caring for guests during the session, and who carry their own professional liability insurance. Meraki Escape does not provide, supervise, or oversee the clinical or therapeutic aspects of any session and assumes no responsibility for any reaction, complication, injury, or outcome arising from a session, whether or not related to disclosed health information. Any claim arising from the services provided during a session is the responsibility of the treating practitioner and their insurer, not Meraki Escape.

## 8. Private Property and Site Access

**Overnight Guests:** Overnight guests may access the property in accordance with their cabin reservation.

**Day Guests:** Day guest access to the Meraki Escape property is limited strictly to the reserved spa and wellness experience. Day guests may not access cabins, trails, guest areas, private areas, or any other portion of the property unless expressly authorized or accompanied by Meraki Escape staff. Arrival, parking, and property access instructions will be provided after booking. Meraki Escape reserves the right to deny entry or require a guest to leave the property if the guest fails to follow access instructions, property guidelines, or staff directions.

## 9. Outdoor Setting and Guest Responsibility

Sessions held at our waterfalls or courtyard take place in a natural outdoor mountain setting. The site may include uneven ground, stairs, rocks, water features, damp surfaces, insects, wildlife, limited lighting, and changing outdoor conditions. Guests may encounter mosquitoes, gnats, ticks, and other insects, as well as wildlife including, but not limited to, deer, turkey, birds, butterflies, squirrels, and other native animals. Guests are responsible for wearing appropriate footwear, dressing suitably for an outdoor session, using reasonable care while on the property, and applying personal insect repellent if desired.

## 10. Guest Conduct and Property Care

Guests are expected to treat the property, staff, practitioners, service providers, furnishings, décor, equipment, and natural surroundings with care and respect. Meraki Escape reserves the right to end the experience without refund if a guest is disruptive, intoxicated, unsafe, disrespectful, or fails to follow property guidelines or staff instructions. Guests may be held financially responsible for damage caused by negligence, misuse, intentional conduct, or failure to follow instructions.

## 11. Photography and Media

Guests are welcome to take personal photos during the experience. Professional photography, commercial photography, drone use, styled shoots, content shoots, or photography involving third-party photographers or vendors is not permitted unless approved in advance by Meraki Escape in writing.



## SIGNATURE DINING EXPERIENCES

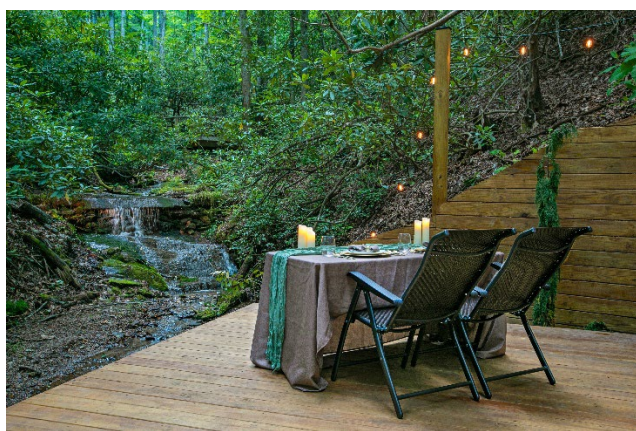
All dining is private: in your cabin or at the waterfall. **Meraki Escape does not operate a restaurant.** *Private dining and celebration moments are curated exclusively for two.* Private chef menus are curated with guests and are not fixed restaurant-style menus. Alcoholic beverages options, premium meats, seafood upgrades, and specialty enhancements may be available at additional charge. Waterfall dining adds a separate \$60 service fee and is weather dependent. Prices do not include tax.

Experience	Duration	Location	Price	Notes
<b>A Private Chef, All Day</b>	Per day	In-cabin	\$1189 per day for two people	Includes your private chef; romantic breakfast, gourmet lunch picnic basket and 3-course dinner.
<b>Signature Private Dining Experience</b>	Evening, 1-hour service	In-cabin. Chef arrives, cooks, serves, and cleans up	<b>4-courses</b> starting at \$700 per couple	Begin with a Champagne Toast, then settle into a slower, more romantic four-course private chef dinner with personalized menu planning and courses thoughtfully paced for the two of you.
<b>Private Chef — Dinner Under the Stars</b>	Evening, 1-hour service	In-cabin. Chef arrives, cooks, serves, and cleans up	<b>3-courses</b> starting at \$590 per couple	A private chef-prepared dinner for two, served in your cabin for an intimate, unhurried evening that feels like your own hidden restaurant in the mountains..
<b>Waterfall Dining Experience</b>	Lunch services at 12 PM or Dinner services at 6 PM.	Triple Creek Waterfall	Private chef dining rate plus \$60 waterfall service fee	Weather dependent, multisensory outdoor dining experience.
<b>Personal Chef — Romantic Breakfast</b>	Morning, 1-hour service	In-cabin. Chef arrives, cooks, serves, and cleans up	Starting at \$349 per couple	Your private chef arrives at your cabin to cook and serve a beautiful, tailored breakfast just for the two of you.
<b>Romantic Breakfast Basket</b>	Delivery	Drop-off/packed	\$159	A freshly assembled breakfast basket delivered directly to your cabin at your selected time.
<b>Trail Lunch for Two</b>	Delivery	Drop-off/packed	\$169	Our Trail Lunch is thoughtfully packed for two and designed to accompany your hike, waterfall outing, scenic drive, or quiet afternoon exploring the mountains.
<b>Gourmet Lunch Basket</b>	Delivery	Drop-off/packed	\$195	This elevated picnic basket features fresh, thoughtfully selected lunch offerings arranged for an unhurried afternoon together to enjoy on property, whether in your cabin or beside one of our private waterfalls.
<b>Charcuterie Board</b>	Romantic arrival add-on	Waiting in cabin upon arrival or scheduled delivery	\$159 per board	Premium meats, artisanal cheeses, crackers, and accompaniments.

## CULINARY ADVENTURES & CHEF DAY PACKAGES

Hands-on dining and full-day private chef options.

Experience	Duration	Location	Price	Notes
<b>Forage-to-Plate Dining Experience</b>	2.5 hours	On-property / Triple Creek Waterfall	\$649 per couple	An educational foraging hike followed by a 3-course private dinner crafted around the seasonal ingredients and wild flavors discovered during your experience. Offered by Food For Adventures
<b>Wild Cocktail Class</b>	2 hours	On-property / Triple Creek Waterfall	\$349 per couple	1-hour educational hike and foraging plus 1-hour hands-on cocktail class. Lunch or dinner upgrade available. Offered by Food For Adventures.
<b>Trout &amp; Cast Iron Culinary Experience</b>	2 hours	Triple Creek Waterfall	\$649 per couple	Hands-on trout preparation, cast iron demonstration, and full meal service by At Your Table WNC.
<b>Stream To Plate Experience</b>	4-5 hours	Off-site	\$415 per person	A guided outdoor adventure combining fly-fishing instruction, wild foraging, and open-fire cooking, followed by a freshly prepared backcountry meal. All gear is included.



## DINING EXPERIENCE POLICIES

### 1. Experience Description:

Meraki Escape is not a restaurant, does not accept walk-ins, and offers this experience by advance reservation only. Availability is strictly limited and offered on a first-come, first-served basis, so we encourage you to book early to secure your chef and preferred time.

**Overnight guests:** may enjoy dining experiences privately in their cabin or at one of our waterfalls.

**Day guests:** may enjoy dining experiences at one of our waterfalls.

### 2. Pricing and Fees

Prices do not include tax or gratuity. Gratuity is not included and is left to the guest's discretion. Premium selections, specialty requests, wine pairings, seafood, steak, and other menu enhancements are not included in the base rate and may be available for an additional charge, subject to advance approval and pricing.

### 3. Guest Limit, Age Requirement and Third Party Access

This experience is limited to a maximum of two guests. All guests must be 25 years of age or older to participate. Guests may be asked to present valid identification to verify age. No additional guests, visitors, photographers, observers, vendors, or third parties are permitted unless approved in advance by Meraki Escape in writing.

#### **4. Reservations and Payment**

Advance reservations are required and are not confirmed until the required deposit has been received by Meraki Escape. A 50% deposit is required at the time of booking. A non-refundable \$250 Chef Reservation Fee is included in the deposit and applies once the reservation is confirmed.

**Overnight Guests:** The remaining balance is due, along with the cabin balance, seven (7) days prior to arrival.

**Day Guests:** The remaining balance is due seven (7) days prior to the scheduled experience. Once a deposit has been received, the quoted rate for that confirmed reservation will be honored, subject to any approved upgrades, premium selections, or additional charges requested by the guest.

#### **5. Cancellation and Rescheduling**

Because this experience requires Meraki Escape to reserve a private chef, coordinate staff, begin menu planning and preparation, and remove the date and time from availability for other guests, cancellation terms are strictly enforced. Payment terms are outlined in Section 4, Reservations & Payment. If a guest cancels 72 hours or more prior to the scheduled dining experience, any eligible refund will be issued minus the non-refundable \$250 Chef Reservation Fee and a 3% credit-card processing fee from the original transaction. Cancellations made within 72 hours of the scheduled dining experience are non-refundable. No-shows will be charged in full.

**Day Guests:** This cancellation policy does not apply when Meraki Escape cancels the experience due to weather pursuant to Section 6, Weather Policy. Meraki Escape will make reasonable efforts to reschedule the experience if availability allows; however, rescheduling is not guaranteed and does not waive, modify, or extend the cancellation policy.

#### **6. Weather Policy**

Outdoor Dining experiences will not take place in rain, unsafe weather, or any condition Meraki Escape determines is unsuitable for outdoor dining

**Overnight Guests:** Dining experiences held outdoors will be moved in-cabin in case of inclement weather, for a cozy, uninterrupted experience.

**Day Guests:** Day guest dining experiences have no indoor backup location. Meraki Escape will make the final weather determination by 10:00 AM on the day prior to the scheduled reservation. If Meraki Escape determines, in its sole discretion, that weather conditions do not allow the experience to proceed, guests may either reschedule to another available date or receive a full refund of amounts paid. If Meraki Escape confirms that the experience will proceed following the weather review, the reservation becomes non-refundable. Guest-initiated cancellations due to personal weather concerns are subject to the standard cancellation policy in Section 5. The experience will not take place in rain, unsafe weather, or any condition Meraki Escape determines is unsuitable for outdoor dining

#### **7. Health and Safety**

After booking, the assigned chef or culinary provider will contact the guest to confirm allergies, dietary restrictions, preferences, and final menu selections. Guests must disclose all allergies, dietary restrictions, food sensitivities, and medical dietary needs directly to the assigned chef or culinary provider at least 72 hours prior to the scheduled reservation. Private dining experiences are prepared and served by an independent chef or culinary provider who is solely responsible for ingredient selection, food handling, preparation, menu execution, and food-service-related accommodations, and who carries their own professional liability insurance. Meraki Escape does not prepare or serve food, does not supervise or oversee the chef's or culinary provider's food handling or preparation, and assumes no responsibility for any allergic reaction, food sensitivity, foodborne illness, cross-contact, ingredient substitution, or other food-service-related issue, whether or not related to disclosed dietary information. Any claim arising from the food or service provided during the experience is the responsibility of the chef or culinary provider and their insurer, not Meraki Escape.

#### **8. Alcohol Policy**

Outside alcohol is not permitted. All guests must be 25 years of age or older to participate. Any guest consuming alcohol must be at least 21 years of age and must present valid government-issued identification upon request. Any alcohol service, including a champagne toast, shall be provided only where lawfully available and in accordance with applicable North Carolina ABC laws, permit requirements, and Meraki Escape policies. Meraki Escape reserves the right to refuse, limit, discontinue, substitute, or omit alcohol service at any time for legal, safety, identification, intoxication, operational, or compliance-related reasons. Guests are responsible for consuming alcohol responsibly and arranging safe transportation from the property following the experience.

#### **9. Private Property and Site Access**

**Overnight Guests:** Overnight guests may access the property in accordance with their cabin reservation.

**Day Guests:** Day guest access to the Meraki Escape property is limited strictly to the reserved dining experience. Day guests may not access cabins, trails, guest areas, private areas, or any other portion of the property unless expressly authorized or

accompanied by Meraki Escape staff. Arrival, parking, and property access instructions will be provided after booking. Meraki Escape reserves the right to deny entry or require a guest to leave the property if the guest fails to follow access instructions, property guidelines, or staff directions.

#### 10. Outdoor Setting and Guest Responsibility

Our waterfall dining areas are located in a natural outdoor mountain setting. The site may include uneven ground, stairs, rocks, water features, damp surfaces, insects, wildlife, limited lighting, and changing outdoor conditions. Guests may encounter mosquitoes, gnats, ticks, and other insects, as well as wildlife including, but not limited to, deer, turkey, birds, butterflies, squirrels, and other native animals. Guests are responsible for wearing appropriate footwear, dressing suitably for an outdoor dining experience, using reasonable care while on the property, and applying personal insect repellent if desired.

#### 11. Guest Conduct and Property Care

Guests are expected to treat the property, staff, service providers, furnishings, décor, equipment, and natural surroundings with care and respect. Meraki Escape reserves the right to end the experience without refund if a guest is disruptive, intoxicated, unsafe, disrespectful, or fails to follow property guidelines or staff instructions. Guests may be held financially responsible for damage caused by negligence, misuse, intentional conduct, or failure to follow instructions

#### 12. Photography and Media

Guests are welcome to take personal photos during the experience. Professional photography, commercial photography, drone use, styled shoots, content shoots, or photography involving third-party photographers or vendors is not permitted unless approved in advance by Meraki Escape in writing.

## RETREATS

Curated journeys for two in the Blue Ridge Mountains. *Retreats combine secluded lodging with private dining, spa, wellness, creative, and connection experiences.*

Package	Length	Price	Best For	Included Highlights
<b>A Babymoon Retreat: Weave a Dream of Protection</b>	2 nights	\$1,979	Expecting couples seeking rest and intention	Secluded Cabin, 3-course private chef dinner, dream catcher workshop for baby's nursery, seasonal flowers, non-alcoholic sparkling beverage, artisan chocolates.
<b>An Anniversary to Remember</b>	3 nights	\$3,595	Milestone anniversaries and deeper celebration	Biltmore Estate Wine, keepsake glasses, artisan chocolates, red roses, charcuterie board, 3-course private chef dinner, two romantic breakfasts, local dining gift card, and 60-minute couples massage.
<b>The Reconnection Retreat</b>	4 nights	\$4,995	Relationship reset and unhurried reconnection	Biltmore Estate Wine, keepsake glasses, artisan chocolates, red roses, charcuterie board, one 3-course dinner, two breakfasts, two picnic lunches, two \$50 local dining gift cards, one 60-min couples massage, one creative or restorative experience, and one relationship workshop.
<b>The Art of Connection, An All-Inclusive Reconnection Retreat</b>	3 nights	\$6,945	Deeply curated, all- inclusive connection retreat	A private all-inclusive couples retreat with chef-led dining, signature wellness and connection experiences, and every detail thoughtfully planned around the two of you.

## HONEYMOON RETREAT OPTIONS

Three levels of private honeymoon experience at Meraki Escape.

Honeymoon Retreat	Price	Includes
<b>The Ever After Retreat</b>	\$2,995	3 nights, Champagne with signature keepsake glasses, two dozen red roses, one 60-minute couples massage, one 3-course private chef dinner, one romantic breakfast.
<b>The Ever After Enchanted</b>	\$3,245	Everything in The Ever After Retreat plus a handcrafted charcuterie board, artisan chocolates, and one private 60-minute waterfall wellness experience: yoga or Pilates.
<b>The Ever After Signature</b>	\$3,795	Everything in Enchanted plus a Wild Cocktail Experience and Wholesome Canvas private painting workshop for two.

## RETREAT EXPERIENCE POLICIES

### Included Experiences

Retreats combine a private cabin stay with included spa, wellness, and dining experiences. All spa, wellness, and dining components of your retreat are governed by our Spa & Wellness Policies and Dining Experience Policies, under the terms applicable to overnight guests.

### Reservation, Payment & Cancellation

Because retreats include a cabin stay, retreat reservations are governed by our standard cabin cancellation policy: guests who cancel 60 days or more before arrival receive a full refund, minus the non-refundable 3% credit-card processing fee. Cancellations made between 59 and 22 days prior to arrival will receive a refund of the deposit minus the 3% processing fee and a \$25 cancellation fee. Cancellations made within 21 days of arrival are non-refundable. There are no refunds for no-shows, early departures, or guests redirected to hotels due to bringing children or extra guests. Weather or acts of God are not grounds for cancellation or refund, except for local mandatory evacuations.





## ELOPEMENTS & INTIMATE CELEBRATIONS

Private waterfall ceremonies, elopements, proposals, and vow renewals in the Blue Ridge Mountains. *Waterfall ceremony and dining locations are private, intimate, and weather dependent.* **All prices are subject to change according to season and market.**

Package / Add-On	Price	Included Highlights
<b>Diamond Waterfall Elopement Package</b>	\$3,795	Comprehensive planning, officiant referral, wedding specialist, custom timeline, up to 15 hours planning support, artistic photography with minimum 50 edited images, ceremony design, champagne toast, first dance, boho happy hour, private dinner, and cake.
<b>Sapphire Waterfall Elopement Package</b>	\$1,795	Planning and coordination, officiant referral, dedicated wedding specialist, custom timeline, up to 5 consultation hours, day-of support, photography with minimum 30 edited images, ceremony design, champagne toast, and first dance.
<b>Sapphire Boho Experience Add-On</b>	\$375	Private champagne toast, first dance beside the waterfall, curated boho styling, chef-prepared appetizers, and a 90 minute celebration.
<b>Marriage Proposals</b>	Inquire	Private, personalized proposal experiences can be curated based on location, styling, photography, dining, and add-ons.
<b>Vow Renewals</b>	Inquire	Intimate vow renewal experiences may be customized using elopement-style planning, ceremony, photography, and dining elements.

## RUBY À LA CARTE WEDDING ADD-ONS

Optional enhancements for couples who want to personalize their intimate celebration.

Add-On	Price	Description
<b>Extra Person</b>	\$+	Extra person charge for intimate weddings; up to 6 extra people.
<b>Boston Ferns / Flower Baskets</b>	\$100	Create an enchanting walkway into the forest and frame the ceremony path.
<b>Floral Upgrades</b>	TBD	Cabin arrangements and additional florals.
<b>Cake or Dessert Upgrades</b>	TBD	Extra cake or alternate dessert options.
<b>Beverage Add-Ons / Upgrades</b>	TBD	Additional beverages or specialty cocktails.
<b>Off-Site Ceremony Scouting &amp; Permits</b>	\$100	Research, scouting, and permit coordination for off-site ceremony location.
<b>Additional Photography</b>	TBD	Additional coverage for candid moments and extended celebration.
<b>Hair and Makeup Coordination</b>	Cost + 25%	Referral, booking, planning, and confirmation.
<b>Transportation Coordination</b>	Cost + 25%	Referral, booking, planning, and confirmation for appointments, dinner reservations, or excursions.
<b>Excursion Coordination</b>	Cost + 25%	Research, planning, booking, and confirmation.
<b>Grocery Run / Cabin Stocking</b>	\$50 + cost	Shopping, delivery, and refrigerator stocking.
<b>Custom Tailored Gift Baskets</b>	TBD	Shopping, assembly, and delivery before arrival.

## ELOPEMENT & CELEBRATION POLICIES

---

Please review these terms before reserving this experience.

**Reservation, Payment & Cancellation:** A deposit of 50% of your selected package total, along with your cabin reservation, is required to secure your elopement or celebration date. The remaining balance is due in full seven (7) days prior to your ceremony, along with your cabin balance. For cancellations made more than 30 days prior to your elopement or celebration date, the deposit will be refunded minus the non-refundable \$500 Wedding Specialist Retainer and a 3% credit-card processing fee associated with the original transaction. Within 30 days of your event date, all payments become non-refundable due to vendor commitments and the exclusive reservation of your date.

**Guest Count:** All elopements and celebrations must remain within the maximum guest count specified in your selected package. Meraki Escape is a strictly adults-only property, and all ceremonies and celebrations are limited to guests 25 years of age and older. Guests who arrive with infants or children will be asked to leave the property immediately. Failure to comply may result in cancellation of the elopement or celebration without refund.

**Weather Policy:** The Blue Ridge Mountains are part of the magic, and couples are required to select a rain plan in advance of their ceremony date. You may choose to proceed at the waterfall or another on-property location under our tented setup, or pre-select an alternative off-property location. Once selected, your rain plan will be thoughtfully implemented if needed.

**Vendor & Property Use:** Only approved vendors coordinated through Meraki Escape may provide services on property unless otherwise agreed upon in writing. All décor installations must be pre-approved. Nails, staples, open flame, or alterations to the natural landscape are not permitted. The waterfall, trails, and forest areas are natural environments, and guests acknowledge the inherent risks associated with outdoor terrain.

**Alcohol & Parking:** If alcohol is present during your celebration, it must be pre-approved. Couples are responsible for the conduct of themselves, their guests and for compliance with all applicable laws. Meraki Escape reserves the right to discontinue alcohol service if guest behavior becomes unsafe.

Parking is extremely limited and must be coordinated in advance. Carpooling is encouraged, and vehicles must remain in designated areas only.

**Liability:** Meraki Escape is not responsible for personal injury, lost or damaged personal items, weather conditions, natural occurrences, or third-party vendor performance. In the event of circumstances beyond our control — including severe weather, government restrictions, or other force majeure events — services may be rescheduled accordingly. We strongly encourage couples to consider event insurance for additional peace of mind.

