



WARCO, Inc.

## **SS2440 SERIES**

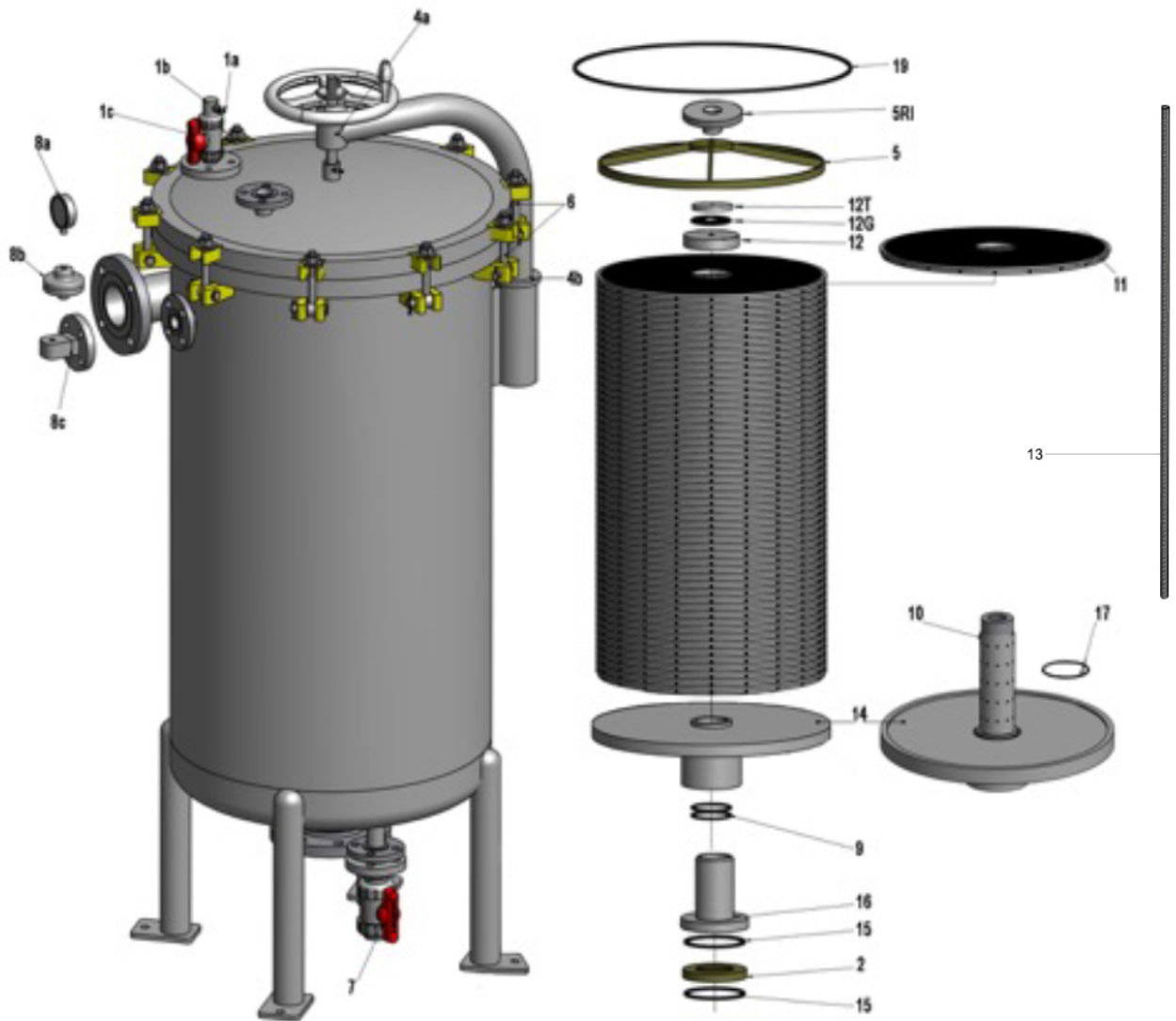


## **PARTS LIST**



Model Number:  
Serial Number:  
Product Code:

# EXPLODED VIEW



## SS2440-DS PARTS LIST

DESCRIPTION	MATERIAL	QTY.	PART #	ITEM#
6026T130 Quick Disconnect Male	PVDF	(1)	PL24-1a	1A
Vent Valve Insert		(1)	PL24-1b	1B
½" Ball Valve Vent		(1)	PL24-1c	1C
Gauge / Gauge Guard	Polypropylene (PP)	(1)	GHBF-6P	8a/8B
Pressure Gauge Assy	Polypropylene (PP)	(1)	PL24-8C Assy	8C
Handle Teflon Ring	Teflon	(1)	PL24-4A	4A
Swing Arm Teflon Ring	Teflon	(1)	PL24-4B	4B
Eye Bolt Assy	Stainless Steel (316SS)	(10)	PL2440-6 Assy	6
Center Rod - Ed.1	1/2" - Titanium	1 1	PL2440-13-R1(RoundBase) PL2440-13-F2(FlatBase)	13 13
Center Rod - Ed.2	3/4" - Titanium (ACME)	1 1	PL2440-13-R1(RoundBase) PL2440-13-F2(FlatBase)	13 13
Nuts	Titanium ¾"		PL2440-13N	
Washers	Titanium ¾"		PL2440-13W	
<b>Disc Stack Assy</b>			PL2440-DS560PP	
Support Spool	Polypropylene (PP)	(1)	PL2440-16-R4(RoundBase) PL2440-16-F4(FlatBase)	16 16
Titanium Support	Titanium	(1)	PL24-2TI	2
Outlet O-rings	EPDM	(2)	PL24-15E	15
Disc Support Hub O-ring	FEP	(2)	PL2440-9F	9
21" Disc Support Plate Assy	Polypropylene (PP)	(1)	PL2440-14 Assy	14
Disc Center Post	Titanium	(1)	PL24-10TI	10
Center Hub Gasket	EPDM	(1)	PL24-17E	17
22" Disc	Polypropylene (PP)	(54)	PL24-11P	11
Center Cap	Polypropylene (PP)	(1)	PL24-12P	12
Center Cap Gasket	VITON	(1)	PL24-VG	12G
Titanium Center	Titanium	(1)	PL24-12W-TI	12T
Ring Insert	Polypropylene (PP)	(1)	PL24-5RI	5RI
21" Compression Ring	Titanium	(1)	PL24-5TI	5
Vessel O-ring Ed.1	VITON	(1)	SS2440-19V-1	19
Vessel O-ring Ed.2	VITON	(1)	SS2440-19V-2	19



## **WARCO, INC.**

821 Sivert Drive  
Wood Dale, IL 60191

Ph: (847)549-8695      Fax: (847) 549-8696

Email: [sales@warcoinc.net](mailto:sales@warcoinc.net)

[www.warcoinc.net](http://www.warcoinc.net)