

April 6, 2026

The Honorable Mike Simpson
Chair
Subcommittee on Interior,
Environment and Related Agencies
Committee on Appropriations
U.S. House of Representatives
Washington, D.C. 20515

The Honorable Chellie Pingree
Ranking Member
Subcommittee on Interior,
Environment and Related Agencies
Committee on Appropriations
U.S. House of Representatives
Washington, D.C. 20515

Dear Chairman Simpson and Ranking Member Pingree:

We are writing to request a funding level of **\$1.395 billion for the Bureau of Land Management's (BLM) Management of Lands and Resources account**, as well as **at least \$78 million for the National Conservation Lands**, in the FY2027 Interior, Environment, and Related Agencies appropriations bill. Robust investment in the BLM is not just a conservation priority; it is an economic necessity for rural America and a cornerstone of U.S. energy dominance.

As the nation's largest land management agency, the BLM oversees a vast portfolio of 245 million surface acres and 700 million acres of mineral estate. Guided by the Federal Land Policy and Management Act (FLPMA), the agency adheres to a dual mandate of multiple-use and sustained yield. This vital mission ensures that our public lands simultaneously support diverse interests, including grazing, energy production, outdoor recreation, and essential conservation efforts.

The BLM's current and historical staffing deficit—exacerbated by last year's layoffs—is causing delays that hurt ranchers, energy producers, and recreation guides alike. The lack of adequate resources at the BLM has created a backlog that stifles the very people the agency is meant to serve. From recreational visitors facing poor service to the ranchers and energy consumers who depend on timely management for their economic stability, the consequences of this funding gap are felt across every sector of our public lands.

By providing a **\$135 million increase (10.7%) for the Management of Lands and Resources account and a \$19 million increase (35%) for the National Conservation Lands** over FY26 levels, Congress can ensure:

- **Responsible Stewardship:** Additional funding to protect the cultural and historic sites that draw visitors from around the world.
- **Rural Economic Growth:** The outdoor recreation economy accounts for 2.3% of U.S. GDP. BLM lands are the "factory floor" for this \$1.2 trillion industry. Without adequate staffing, visitor safety and local business revenue are at risk.
- **Energy Security:** The BLM has already exceeded goals to permit 25 gigawatts of renewable energy. Sustained funding will help process applications faster, driving billions in private investment and creating thousands of jobs in the clean energy sector.

Conservation

A cornerstone of the BLM's mission is the stewardship of the National Conservation Lands—a premier system of landscapes recognized for their historic, cultural, and scientific significance. Spanning over 38 million acres, this system includes National Monuments, Conservation Areas, and Wilderness regions. While the system has doubled in size since 2000 through bipartisan action, federal funding has failed to keep pace with this growth.

To begin addressing this gap, we urge Congress to invest at least **\$78 million specifically for National Conservation Lands** in FY2027. This funding is a necessary correction for an account that has seen its responsibilities grow by 14 million acres and 109 units since its peak funding year in 2006. Such an investment is vital for the BLM to protect archaeological resources, manage increasing visitor traffic, and ensure these iconic American landscapes are preserved for future generations.

Outdoor Recreation

Outdoor recreation has become a powerhouse of the American economy, generating \$1.2 trillion in output and supporting 5 million jobs in 2023 alone. As a primary host for this activity, the BLM is the lifeblood of rural Western communities. However, chronic underfunding has resulted in significant service delays and infrastructure gaps that threaten both the visitor experience and public safety.

Despite managing the largest land acreage in the federal system, the BLM receives the lowest funding per visitor of any land management agency. This disparity—coupled with rising visitation and dwindling staff—creates an unsustainable environment for safe recreation. Investing in the BLM is an investment in our local economies; proper funding will provide the resources necessary to ensure that the millions who visit our public lands can do so safely and reliably.

Clean Energy

As American energy demand rises, the BLM stewards lands with some of the best solar, wind, and increasingly, geothermal energy potential in the country. However, to play a meaningful role in meeting rising demand and deploying critical energy resources while simultaneously restoring natural ecosystems, proper agency funding is essential. Congress can ensure this demand is met through funding that will support the creation of thousands of jobs that enhance energy availability and reliability during this period of high inflation. The BLM's track record is proven: in recent years, renewable energy lease sales were drawing record interest; renewable energy permitting was accelerating; and construction of utility-scale projects—especially solar—has been delivering substantial energy to cities across California and the Southwest.

This investment is a bipartisan economic win. The clean energy economy currently supports 3.5 million workers, and since 2022, over 80% of investment dollars and 70% of new jobs have flowed into Republican-represented districts. In these 152 districts, more than \$204 billion in new investment is revitalizing local economies. By providing the BLM with adequate resources, Congress ensures that the responsible development of public lands continues to play a key role in driving economic growth, lower consumer costs, and strengthen U.S. energy dominance.

The Future of the Bureau of Land Management

Our nation's public lands reflect a deep historical connection and require a well-resourced agency for effective stewardship. Chronic underfunding has hamstrung the BLM's ability to provide efficient customer service to those who rely on public lands for their livelihoods.

We seek a future where these lands remain a bedrock for rural economies, a hub for clean energy, a sanctuary for outdoor recreation, and the vanguard of America's conservation ethic. Achieving this requires a strong, well-staffed, and well-funded BLM.

As you prepare the FY2027 Interior, Environment and Related Agencies appropriations bill, we urge you to reject further cuts and invest in the agency's capacity to drive American prosperity.

Sincerely,

National

Conservation Lands Foundation
American Bird Conservancy
American Forests
American Hiking Society
American Trails
Climate Justice Alliance
Creation Justice Ministries
Earthjustice Action
Endangered Species Coalition
Great Old Broads for Wilderness
GreenLatinos
Hip Hop Caucus
Kids for Saving Earth
Latino Outdoors

League of Conservation Voters
Mountain Mamas
Natural Resources Defense Council
NETWORK Lobby for Catholic Social Justice
Next 100 Coalition
Outdoor Alliance
Partnership for the National Trails System
Public Land Solutions
Resource Renewal Institute
Sierra Club
The Ocean Project
The Wilderness Society
Wildlands Network

Alabama

People's Justice Council

Arizona

Archaeology Southwest
AZ (LAND) Fund
Coalition for Sonoran Desert Protection

Friends of Ironwood Forest
Grand Canyon Trust

California

Amargosa Conservancy
Atsapaq
BLU Educational Foundation
CactusToCloud Institute
California Environmental Voters
California Native Plant Society
Californians for Western Wilderness
CalWild
Carrizo Plain Conservancy
COFEM
Endangered Habitats League
Forests Forever
Fort Ord Recreation Trails (FORT) Friends
Friends of Big Morongo Canyon Preserve
Friends of Headwaters Forest Reserve
Friends of Point Arena-Stornetta Lands
Friends of the Amargosa Basin
Friends of the Desert Mountains

Friends of the Dunes
Friends of the Inyo
Friends of the Lost Coast
Los Padres ForestWatch
Mattole Restoration Council
Mount Shasta Bioregional Ecology Center
Native American Land Conservancy
Nature for All
Outdoor Outreach
Outward Bound Adventures
Pacific Crest Trail Association
Piedras Blancas Light Station Association
Sanctuary Forest, Inc.
Sempervirens Fund
Transition Habitat Conservancy
Trinidad Coastal Land Trust
Tuleyome
Turtle Island Restoration Network

Colorado

Colorado Canyons Association
Colorado Mountain Club
Conservation Colorado
Dolores River Boating Advocates

San Juan Citizens Alliance
San Luis Valley Ecosystem Council
Sheep Mountain Alliance
Southwest Colorado Canyons Alliance

High Country Conservation Advocates
Living Rivers Colorado Riverkeeper
Mountain Mamas Colorado
Mtn Bio
Rocky Mountain Wild

Western Colorado Alliance
Western Slope Conservation Center
Wild Connections
Wilderness Workshop

Idaho

Birds of Prey NCA Partnership

Idaho Conservation League

Montana

Montana Conservation Voters

Wild Montana

Nevada

Blacks in Nature
Friends of Avi Kwa Ame
Friends of Basin & Range National Monument
Friends of Gold Butte
Friends of Nevada Wilderness
Friends of Red Rock Canyon
Friends of Sloan Canyon

Get Outdoors Nevada
Indigenous Voices of Nevada
Nevada Conservation League
Nevada Outdoor Business Coalition
Save Red Rock
Trail Access Project

New Mexico

Ancestral Lands Conservation Corps
Friends of Organ Mountains-Desert Peaks
Friends of Rio Grande del Norte
Native Land Institute

New Mexico Wild
New Mexico Wildlife Federation
Upper Gila Watershed Alliance

Oregon

Friends of Cascade-Siskiyou National Monument
Friends of the Owyhee
Friends of Yaquina Lighthouses

Oregon League of Conservation Voters
Oregon Natural Desert Association
Willamette Resources and Educational Network

Pennsylvania

Physicians for Social Responsibility Pennsylvania (PSRPA)

Utah

Amazing Earthfest
Conserve Southwest Utah
Grand Staircase-Escalante Partners

Southern Utah Wilderness Alliance
SW Utah Great Old Broads for Wilderness

Vermont

Standing Trees

Virginia

Allegheny-Blue Ridge Alliance (ABRA)

Appalachian Voices

Washington

Islanders for the San Juan Island National Monument

Wisconsin

Great Lakes Wildlife Alliance

Table 1: Land Management Agency Acreage and Funding*

Land Management Agency	Acres	FY26 ~\$ Per Acre	FY26	FY25	FY24	FY23
U.S. Forest Service	193M	~\$31.81	\$6.14B	\$6.16B	\$9.32B	\$10.08B
National Park Service	84M	~\$38.93	\$3.27B	\$3.34B	\$3.33B	\$3.48B
U.S. Fish and Wildlife Service	89M	~\$18.54	\$1.65B	\$1.76B	\$1.72B	\$1.77B
Bureau of Land Management	245M	~\$5.48	\$1.34B	\$1.41B	\$1.41B	\$1.49B

*Sources: Congressional Research Service, House Committee on Appropriations

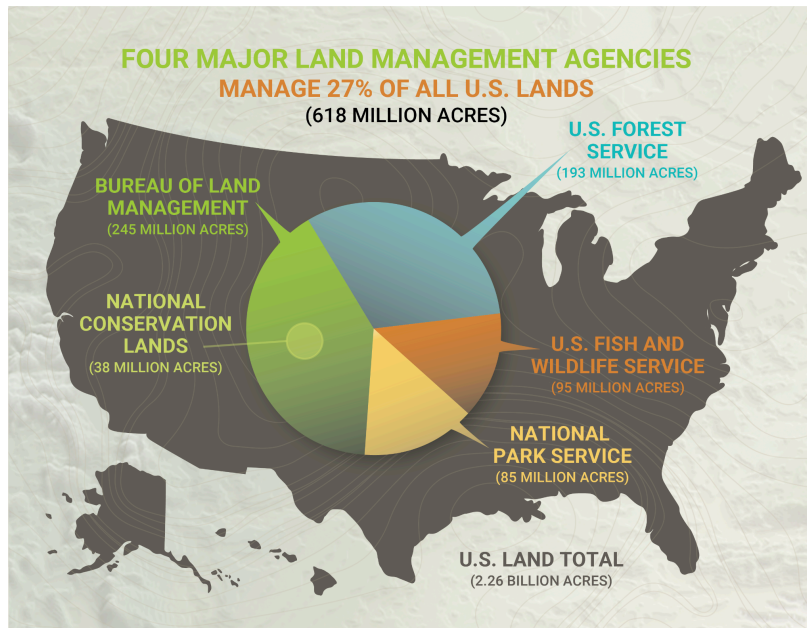


Table 2: Land Management Agency Funding Per Visitor, 10 Year Average (2016-2025)*

Land Management Agency	Acres	Recent Annual Visitation	10 Year Avg per Visitor
National Park Service	84 million	325.5M	\$14.77
U.S. Forest Service	193 million	158.7M	\$3.80
U.S. Fish and Wildlife Service	89 million	68.5M	\$1.37
Bureau of Land Management	245 million	82.3M	\$0.91

*Sources: NPS FY25 Greenbook, USFS National Visitor Use Monitoring Survey, USFWS FY25 Budget Request, BLM FY25 Budget Justification.

Table 3: **Historical Comparative Growth of Appropriations and National Conservation Lands**

Appropriations*			National Conservation Lands **
FY	Enacted (\$M)	+/-	New Acres Added
2026	\$59.135		
2025	\$59.135		624,270
2024	\$59.135^^	-2.464	1,036,056
2023	\$61.599^^	+12.325	346,353
2022	\$49.274	+3.455	
2021	\$45.819	+2	
2020	\$43.819	+4	
2019	\$39.819	+3	1,164,118
2018	\$36.819		
2017	\$36.819		47,624
2016	\$36.819	+5	7,189,857
2015	\$31.819		925,946
2014	\$31.819		443,547
2013	\$31.819		243,710
2012	\$31.819	-0.051	7,212
2011	\$31.870	+0.569	11,001
2010	\$31.301	-29.526	
2009	\$60.827	+8.687	1,419,424
2008	\$52.140	-11.557	106
2007^	\$63.697	-1.434	
2006	\$65.131	+5.542	471,559
2005	\$59.589	-2.687	11,823
2004	\$62.276	+2.437	780,806
2003	\$59.839	-4.450	
2002	\$64.289	+1.041	759,032
2001	\$63.248	+12.095	1,085,539
2000	\$51.153	+1.078	4,079,958
			20,118,699 added

*Source: Congressional Research Service

**Source: Bureau of Land Management

^Up until FY2007, National Landscape Conservation System funding was provided under Recreation Management.

^^Starting in FY2023, this account includes ~\$11 million for National Scenic and Historic Trails.

Table 4: **Additions to National Conservation Lands Since 2006***

Year	NCL Unit	State	BLM Acres
2025	Chuckwalla National Monument	CA	624,270
2023	Baaj Nwaavjo I'tah Kukveni-Ancestral Footprints of the Grand Canyon National Monument	AZ	529,242
	Avi Kwa Ame National Monument	NV	506,814
2022	Numunaa Nobe National Conservation Area	NV	160,223
	Pistone-Black Mountain National Conservation Area	NV	3,415
	Cain Mountain Wilderness	NV	14,050
	Clan Alpines Wilderness	NV	128,362

	Desatoya Mountains Wilderness	NV	40,303
2019	John Wesley Powell National Conservation Area	UT	29,868
	Jurassic National Monument	UT	850
	Alabama Hills National Scenic Area	CA	18,610
	Aden Lava Flow Wilderness	NM	27,673
	Ah-Shi-Sle-Pah Wilderness	NM	7,242
	Avawatz Mountains Wilderness	CA	89,500
	Big Wild Horse Mesa Wilderness	UT	18,192
	Broad Canyon Wilderness	NM	13,902
	Buzzards Peak Wilderness	CA	11,840
	Cinder Cone Wilderness	NM	16,935
	Cold Wash Wilderness	UT	11,001
	Desolation Canyon Wilderness	UT	142,996
	Devils Canyon Wilderness	UT	8,675
	Devil's Staircase Wilderness	OR	8,600
	Eagle Canyon Wilderness	UT	13,832
	East Potrillo Mountains Wilderness	NM	12,155
	Great Falls Basin Wilderness	CA	7,810
	Horse Valley Wilderness	UT	12,201
	Labyrinth Canyon Wilderness	UT	54,643
	Little Ocean Draw Wilderness	UT	20,660
	Lower Last Chance Wilderness	UT	19,339
	Mexican Mountain Wilderness	UT	76,413
	Middle Wild Horse Mesa Wilderness	UT	16,343
	Milpitas Wash Wilderness	CA	17,250
	Mount Riley Wilderness	NM	8,382
	Muddy Creek Wilderness	UT	98,023
	Organ Mountains Wilderness	NM	19,916
	Potrillo Mountains Wilderness	NM	105,085
	Reds Canyon Wilderness	UT	17,325
	Robledo Mountains Wilderness	NM	16,776
	San Rafael Reef Wilderness	UT	60,442
	Sid's Mountain Wilderness	UT	49,130
	Sierra de las Uvas Wilderness	NM	111,114
	Turtle Canyon Wilderness	UT	29,029
	Whitethorn Wilderness	NM	9,616
2017	Cascade-Siskiyou National Monument	OR/CA	47,624
2016	Bears Ears National Monument	UT	1,063,000
	Castle Mountains National Monument	CA	20,920
	Gold Butte National Monument	NV	296,937
	Mojave Trails National Monument	CA	1,600,000
	Sand to Snow National Monument	CA	8,300
	California Desert Conservation Lands	CA	4,200,000
2015	Basin and Range National Monument	NV	703,585
	Berryessa Snow Mountain National Monument	CA	110,000
	Browns Canyon National Monument	CO	21,586
	Cecil D. Andrus-White Clouds Wilderness	ID	90,775
2014	Organ Mountains Desert Peaks National Monument	NM	496,330

	Pine Forest Range Wilderness	NV	24,015
2013	Rio Grande del Norte National Monument	NM	242,710
	San Juan Islands National Monument	WA	1,000
2012	Fort Ord National Monument	CA	7,212
2011	Elkhorn Ridge Wilderness	CA	11,001
2009	Prehistoric Trackways National Monument	NM	5,280
	Beaver Dam Wash National Conservation Area	UT	63,478
	Dominguez-Escalante National Conservation Area	CO	210,149
	Fort Stanton-Snowy River Cave National Conservation Area	NM	24,876
	Red Cliffs National Conservation Area	UT	44,859
	Beartrap Canyon Wilderness	UT	40
	Beauty Mountain Wilderness	CA	15,627
	Big Jacks Creek Wilderness	ID	52,000
	Blackridge Wilderness	UT	13,108
	Bruneau-Jarbridge Rivers Wilderness	ID	90,000
	Canaan Mountains Wilderness	UT	44,531
	Cottonwood Canyon Wilderness	UT	11,667
	Cougar Canyon Wilderness	UT	10,409
	Deep Creek and Deep Creek North Wilderness	UT	4,262
	Doc's Pass Wilderness	UT	17,294
	Dominguez Canyon Wilderness	CO	66,280
	Goose Creek Wilderness	UT	98
	Granite Mountain Wilderness	CA	9,808
	La Verkin Creek Wilderness	UT	445
	Little Jacks Creek Wilderness	ID	51,000
	Lower White River Wilderness	OR	2,806
	North Fork Owyhee Wilderness	ID	43,000
	Oregon Badlands Wilderness	OR	29,000
	Owyhee River Wilderness	ID	267,000
	Pinto Mountains Wilderness	CA	25,000
	Pole Creek Wilderness	ID	12,530
	Red Butte Wilderness	UT	1,537
	Red Mountain Wilderness	UT	18,729
	Sabinoso Wilderness	NM	19,625
	Slaughter Creek Wilderness	UT	3,901
	Soda Mountain Wilderness	OR/CA	24,700
	Spring Basin Wilderness	OR	6,400
	Taylor Creek Wilderness	UT	32
	White Mountains Wilderness	CA	229,953
2008	Jupiter Inlet Lighthouse Outstanding Natural Area	FL	86
	Piedras Blancas Light Station Outstanding Natural Area	CA	20
2006	Becky Peak Wilderness	NV	18,189
	Bristlecone Wilderness	NV	14,095
	Cache Creek Wilderness	CA	27,296
	Cedar Mountain Wilderness	UT	100,000
	Cedar Roughs Wilderness	CA	6,287
	Goshute Canyon Wilderness	NV	42,544
	Government Peak Wilderness	NV	6,313

	Highland Ridge Wilderness	NV	68,627
	King Range Wilderness	CA	42,694
	Mount Grafton Wilderness	NV	78,754
	Rocks and Islands Wilderness	CA	6
	South Fork Eel River Wilderness	CA	12,867
	Yuki Wilderness	CA	53,887

***Source: Bureau of Land Management**