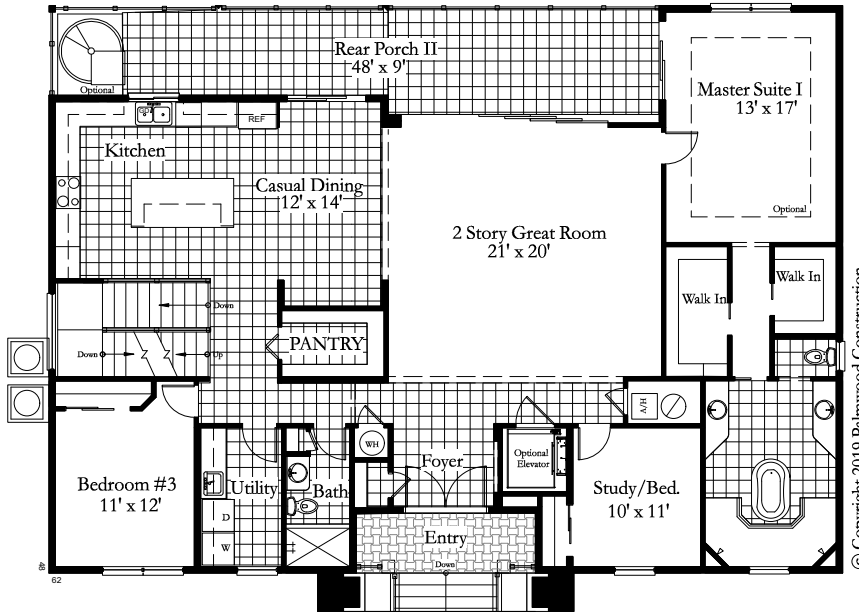


The Mariner

Dual Master Suites 5 Bedroom □ 4 Bath □ 4 Car Garage □ Estate Specs. □ "V-11" Zone

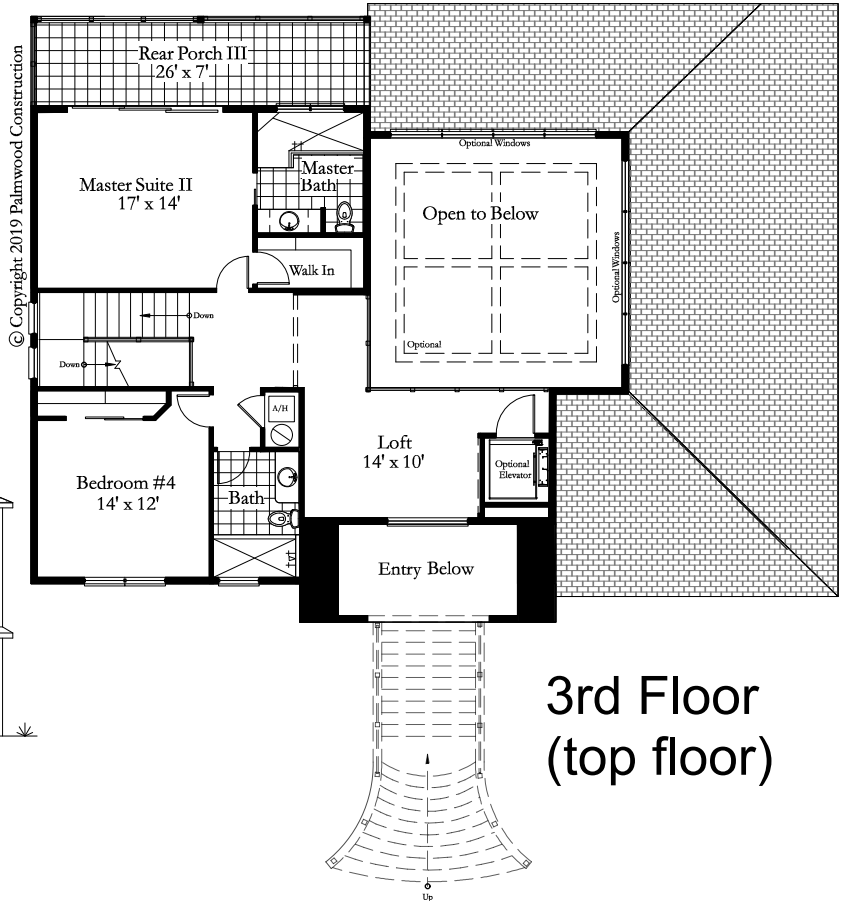
SQUARE FOOTAGE TABULATIONS	
FLOOR ONE	
GARAGE	2125 SQ. FT.
REAR PORCH 1	558 SQ. FT.
FLOOR 1 SUB TOTAL	2683 SQ. FT.
FLOOR TWO	
LIVING	2212 SQ. FT.
OPEN TO BELOW	120 SQ. FT.
REAR PORCH 2	376 SQ. FT.
ENTRY	125 SQ. FT.
FLOOR 2 SUB TOTAL	2833 SQ. FT.
FLOOR THREE	
LIVING	1004 SQ. FT.
OPEN TO BELOW	465 SQ. FT.
REAR PORCH 3	185 SQ. FT.
FLOOR 3 SUB TOTAL	1654 SQ. FT.
GRAND TOTALS	
LIVING	3216 SQ. FT.
OPEN TO BELOW	120 SQ. FT.
PORCHES	1119 SQ. FT.
ENTRY	125 SQ. FT.
GARAGE	2125 SQ. FT.
TOTAL 6705	



2nd Floor
(main floor)



Exterior



3rd Floor
(top floor)



8245 RIVER COUNTRY DRIVE
SPRING HILL FL 34607
CORPORATE OFFICE 352.597.2100

Palmwood Construction 5/31/19
5:18:22 PM

Building YOUR Florida Lifestyle Since 1957
www.palmwoodconstruction.com

THIS DESIGN IS COPYRIGHTED AND IS SUBJECT TO COPYRIGHT PROTECTION AS AN ARCHITECTURAL WORK UNDER SECTION 102 OF THE COPYRIGHT ACT 17 U.S.O. AS AMENDED IN DECEMBER 1990 AND KNOWN AS THE "ARCHITECTURAL WORKS COPYRIGHT ACT OF 1990" PROTECTION INCLUDES BUT IS NOT LIMITED TO THE OVERALL FORM AS WELL AS THE COMPOSITION OF SPACES AND ELEMENTS. ANY UNAUTHORIZED USE CAN LEGALLY RESULT IN CESSATION OF SUCH CONSTRUCTION OR BUILDING BEING SEIZED OR RAZED