

Cordless glue gun

WARNING

- Read this manual and general safety instructions carefully before using the appliance, for your own safety. Your power tool should only be passed on together with these instructions.

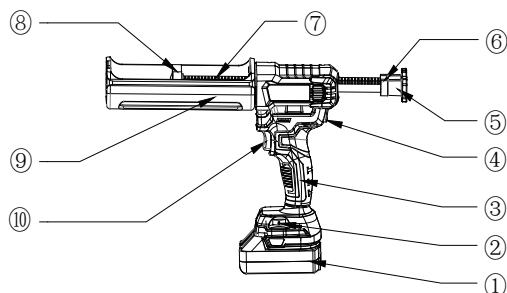
General Power Tool Safety Warnings

1 Work area safety

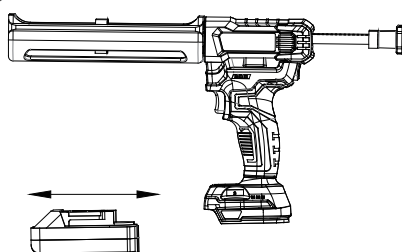
- Keep work area clean and well lit. Cluttered or dark areas invite accidents.
- Do not operate power tools in explosive atmospheres, such as in the presence of flammable liquids, gases or dust.
- Keep children and bystanders away while operating a power tool.
- Do not expose power tools to rain or wet conditions. Water entering a power tool will increase the risk of electric shock.

2 Personal safety

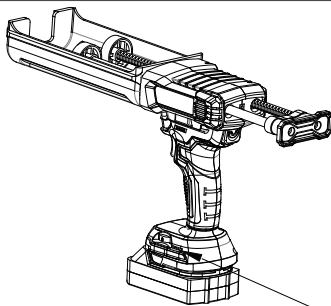
- Stay alert, watch what you are doing and use common sense when operating a power tool. Do not use a power tool while you are tired or under the influence of drugs, alcohol or medication.
- Use personal protective equipment. Always wear eye protection. Protective equipment such as dust mask, non-skid safety shoes, hard hat, or hearing protection used for appropriate conditions will reduce personal injuries.
- Prevent unintentional starting. Ensure the switch is in the off-position before connecting to power source and/or battery pack, picking up or carrying the tool.
- Remove any adjusting key or wrench before turning the power tool on.
- Do not overreach. Keep proper footing and balance at all times. This enables better control of the power tool in unexpected situations.
- If devices are provided for the connection of dust extraction and collection facilities, ensure these are connected and properly used. Use of dust collection can reduce dust-related hazards.



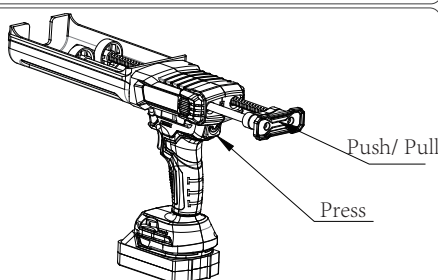
- 1 Battery 2 Speed control 3 Handle 4 Clutch
5 Pulls 6 Crash pad 7 Rack 8 Rubber
9 Hose bracket 10 Switch



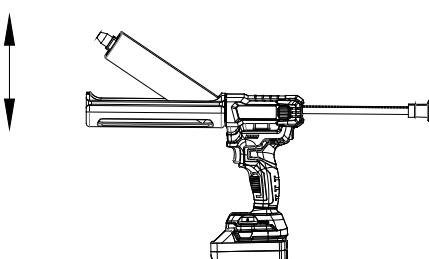
a. Removing battery



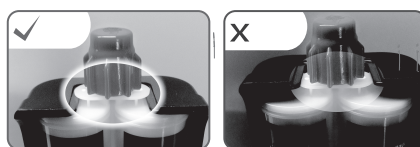
b. Battery display



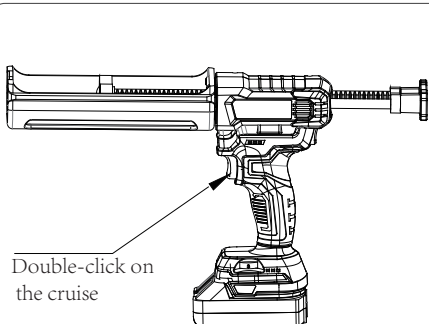
c. Pushrod adjustment



d. Change rubber tube



e. Accurately stuck



f. Uniform glue

Using

1 Battery cartridge

To remove the battery cartridge, slide it from the tool while sliding the button on the front of the cartridge. To install the battery cartridge, align the tongue on the battery cartridge with the groove in the housing and slip it into place.

2 Starting up

- Press the trigger to start tool to rubber extrusion;
- The type of glue, temperature and the size of the nozzle
- When the glue from the back end (push rod piston), please check whether the glue is expired, nozzle mouth is too small, or congestion, and appropriately reduce dispensing velocity;
- Put the trigger stop tool to rubber extrusion.

3 Speed adjusting

Rotation speed controller button (1-6), can choose different speed of sealant.

4 Pushrod adjust

- Press the pull back button to adjust the position of the putter (hold down the pull back button all the time);
- If the pull back button cannot be pressed to adjust the position of the putter, please press the trigger and immediately release the putter.
- Let the putter return automatically and press the pull back button again to adjust the position of the putter. Grab the bottom cap of the putter and move the putter back and forth to appropriate position; Release the pull back button.

5 Change rubber

- Please select the corresponding hose products in accordance with the hose type;
- To remove gum (tube) front end and mount nozzle, put glue in the rubber seat;
- Push the push rod before, and start the trigger; If not to squeeze plastic extrusion or too little quantity, please check whether the glue (tube) incision is too small, whether glue hardening, expired, and replace the new glue;
- Plastic bottles must be correct, the glue guns (figure e) in the card slot, will force balance, not glue, the glue is even some extended power, load size, glue gun can be better 1

6 Sealing up

Putting the rubber at the top of the holster with buffer thrust, protect the function of the bottom of the glue tube, the stress area, thus avoiding the rear adhesive liquid leakage.

7 Glue

This tool inside the device over load protection device, when the output power is greater than the set value will start putting back around 4 mm, then stop, will trigger release again after period of time to start work. If over load protection, the motor stop must confirm the following things:

- the nozzle tip is removed;
 - remove the note inside the mouth hard out of the materials;
 - hose not damaged or frozen;
 - there is no glue push rod can run properly.
- When confirmed will start over load protection, please switch to other plastic material or consulting service center.

Technical dat

Item	Cordless glue gun
Voltage	21V
No-load speed	5.2MM/sec
Oper.Temp	-15°C~+50°C
Push force	800kg±50kg
Sound power level	80dB(A)
Sound pressure level	69dB(A)