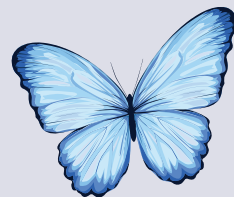


# Questions I Didn't Know To Ask

A guide to funeral planning during hospice care.



*When a loved one enters hospice care, families often start considering funeral arrangements. The unknown can be overwhelming, and we're here to help answer your questions.*

## Immediate Steps After a Loved One Passes

### ***What is the first step when my loved one passes?***

The first call you should make is to the hospice organization. Once the hospice nurse arrives and confirms the death, they will notify the funeral home on your behalf.

### ***What if the death occurs during the night?***

Baue Funeral Home is available 24/7. Whether you need to speak with a funeral director or arrange for transportation, we are always here to assist you, day or night.

### ***Does the funeral home need to come immediately?***

We will not arrive until you are ready for us to transfer your loved one into our care. We will respect your timeline and wishes.

### ***What is the transfer timeline after the funeral home is notified?***

Typically, the transfer takes less than an hour, and rarely longer than 90 minutes, depending on the distance from the place of death to our funeral home.

### ***Who will come to transfer my loved one?***

Our care team will arrive to assist you. They will introduce themselves and explain the process before beginning. They will arrive in a transport vehicle and bring a cot to transfer your loved one.

## Transportation & Care

### ***Where is my loved one taken after the funeral home has transferred?***

We have a centralized care center. Regardless of the Baue location or type of services chosen, your loved one will be taken to the Baue Care and Cremation Center, 4175 Shady Springs Ln, St. Peters, MO 63376.

### ***Is payment required before the transfer?***

No, payment is not required before the transfer.



## Preparing for the Future

### ***Should the Funeral Home be Contacted in Advance?***

You are welcome to call us, we can take down important information, answer any questions, and ensure our funeral team is informed and prepared to assist you when the time comes.

### ***Should I Preplan & Prepay for the Funeral of Someone in Hospice Care?***

We encourage prearranging; however, when someone enters hospice care and death is imminent, processing prearrangement policies may take several weeks, which might not allow enough time.

We can schedule an appointment to discuss your options and gather any details you wish to provide. While we encourage spending this time with your loved one, we understand that meeting ahead of time may offer peace of mind to those making decisions.



*It's important to note that an arrangement conference will still be required after the death occurs.*

## Funeral Arrangements & Who Should Attend

### ***What happens at funeral arrangements and who should attend?***

A funeral arrangement conference occurs after a person's passing, where you'll meet with a funeral director to choose services, provide vital information for the death certificate, and Social Security will be notified. An obituary will also be written. Expect the meeting to last 2-3 hours, with the legal next of kin responsible for completing the arrangements.

The legal next of kin can include one person or multiple individuals. The next of kin refers to the closest living relatives of the deceased, typically starting with the spouse, children, or parents, and may extend to siblings or more distant relatives if necessary.

### ***If my loved one prearranged their funeral, do I still need to come in after their passing?***

Even if your loved one prearranged their funeral, an arrangement conference is still required. This meeting is necessary to verify the preneed contract, complete paperwork, and finalize details. Prearranging locks in service costs, with payment handled through the prearrangement.