



ATLAS
IRON CE

ATLAS IRON CE
3 YR / 3000 HR
WARRANTY

AX90
18,000lbs Excavator

Optimized for All-Around Versatility and Improved Fuel Efficiency



More Durability Less Maintenance

The Atlas Iron AX90 excavator combines advanced technology with practical, operator-driven design. Engineered for dependable power and simplified maintenance, the AX90 features easily accessible service points that streamline upkeep, reduce downtime, and keep your operation moving.

Best-in-Class Maintenance Access

- **Maintenance Made Simple**

The Atlas Iron AX90 is designed to lower total cost of ownership while delivering dependable jobsite performance. Simplified service access and clearly laid-out maintenance points reduce downtime and labor hours, helping end users stay productive. Powered by a proven Yanmar engine, the AX90 offers efficient, reliable operation backed by a platform dealers can confidently support and stand behind.

- **AIR Battery Cut-Off Switch**

Quickly disconnect the battery during long-term storage for safety and convenience.

- **Hour Meter Display**

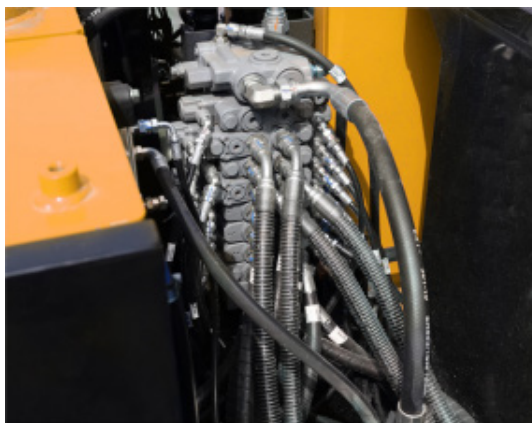
The hour meter is visible from ground level, allowing for easy monitoring and maintenance scheduling without opening panels.

- **Air Filter**

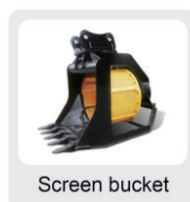
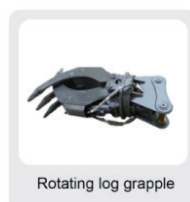
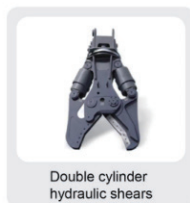
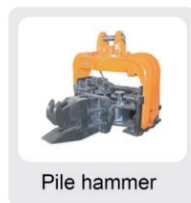
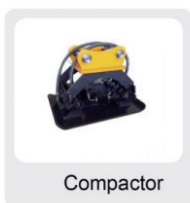
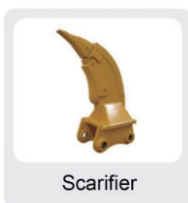
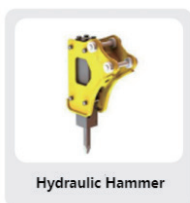
Blocks dust, sand, and airborne debris from entering the engine. This protects internal components, reduces wear, and extends engine life.

- **Oil Gauge**

The hydraulic oil level can be quickly checked via the side-mounted gauge on the hydraulic tank—no tools required.



Attachments



Specifications



ATLAS
IRON CE

ATLAS IRON CE
3 YR / 3000 HR
WARRANTY

AX90

Key Specifications	Operating Weight (lbs)	18000
	Bucket Capacity (ft.3)	9.5-1.7
	Travel Speed low/high speed (mph)	1.6-2.7
	Bucket Digging Force (lbf)	12814
	Arm Digging Force (lbf)	8768
	Tail Turning Radius(in)	70.9
	Minimum Ground Clearance(in)	14.4
	Maximum Digging Depth (in)	137.9
	Maximum Digging Height (in)	250.9
	Maximum Unloading Height (in)	207
Engine & Performance	Engine Brand	YANMAR
	Engine Model	4TNV98L
	Maximum Horsepower (hp)	60.3
	Maximum Power (hp)	82.6
	Maximum Speed (rpm)	2100
	Displacement (gal)	0.88
	Numbers Of Cylinders	4
	Cooling Method	Water Cooling
	Engine Oil Change Amount (gal)	1.8
	Fuel Form	Diesel
	Fuel Grade	0/-10
	Theoretical Fuel Consumption (gph)	2.67
Dimension	Transport Length (in)	242
	Transport Width (in)	88.3
	Transport Height (in)	104.8
	Bucket Width (in)	23.6
	Boom Length (in)	146.5
	OStick Length (in)	65.8
	Backfill Blades Width (in)	86.7
Hydraulic System	Main Pump Type/Model	HYTEK
	Main Pump Brand	HYTEK
	Main Pump Maximum Flow (gpm)	44.9
	Multi-Way Valve	8-Way Hydraulic Multi-Way Valve
	Rate Set Pressure (psi)	3263.3
	Maximum Set Pressure (psi)	3625.5
	Travel Hydraulic Motor Type	TM07
	Displacement(in ³)	2.6