



# ATLAS

IRON CE



ATLAS IRON CE

**3 YR / 3000 HR  
WARRANTY**

## AX60

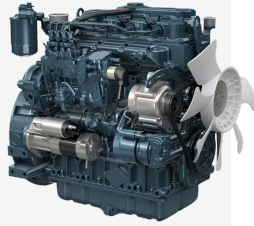
### 12000lbs Excavator

## PRODUCT CHARACTERISTICS

### Kubota V2607 Four-Cylinder Engine

Delivers reliable, fuel-efficient power with smooth, low-noise operation.

EPA Tier 4 compliant, it provides dependable performance and long-term durability backed by Kubota's proven global support.



### Boom and Stick

The boom and stick are structurally reinforced with thicker end plates for increased durability. An upgraded manufacturing process replaces traditional welded joints with integrated cast components, improving overall strength, reliability, and performance in demanding, heavy-duty applications.



### Load Sensing Doosan Multi-Way Valve

Delivers smooth, responsive hydraulic control by automatically adjusting flow and pressure to match workload demands.



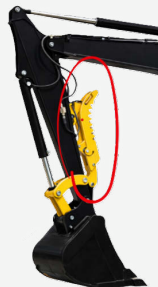
### Hydraulic Cylinder

The hydraulic cylinder features a reinforced, integrated design with fewer weld points, reducing the risk of structural failure and delivering improved durability and reliability under heavy-duty operating conditions.



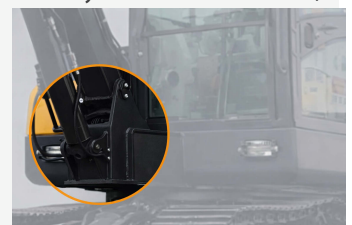
### Hydraulic Thumb & Quick-Change Coupler

Comes standard to allow fast attachment changes and improved material handling versatility on the jobsite.



### Reinforced boom cylinder support

Built with a thickened, double-layer reinforced structure, the boom cylinder support is designed to withstand the high impact loads of crushing and heavy-duty operations, improving durability and long-term reliability.



# Specifications



**ATLAS**  
IRON CE

ATLAS IRON CE  
3 YR / 3000 HR  
WARRANTY

**AX60**

Key Specifications	Operating Weight (lbs)	12000
	Bucket Capacity (ft.3)	6.18
	Travel Speed low/high speed (mph)	0-1.5/0-2.4
	Grade ability (%)	35%
	Ground pressure (Psi)	5.1
	Maximum Digging Force (lbf)	7194
	Maximum Digging Radius (in)	242.5
	Maximum Digging Depth (in)	149
	Maximum Digging Height (in)	228.7
	Maximum Unloading Height (in)	160.6
Engine & Performance	Engine Brand	Kubota
	Engine Model	V2607
	Maximum Horsepower (hp)	66
	Maximum Power (hp)	67
	Maximum Speed (rpm)	2700
	Displacement	2.6L
	Numbers Of Cylinders	4
	Cooling Method	Water Cooling
	Engine Oil Change Amount (gal)	1.4
	Fuel Form	Diesel
	Fuel Grade	0/-10
	Theoretical Fuel Consumption (L/H)	10.1
Dimension	Transport Length (in)	230.3
	Transport Width (in)	78.7
	Transport Height (in)	101.6
	Bucket Width (in)	23.6
	Boom Length (in)	118.16
	OStick Length (in)	63
	Backfill Blades Width (in)	74
Hydraulic System	Main Pump Type/Model	Load Sensitive Variable Piston Pump/68
	Main Pump Brand	HYTEK
	Main Pump Maximum Flow (gpm)	35.9
	Multi-Way Valve	8-Way Hydraulic Multi-Way Valve
	Rate Set Pressure (psi)	3263
	Maximum Set Pressure (psi)	29003626
	Travel Hydraulic Motor Type	TM07
	Displacement (in <sup>3</sup> )	2.64