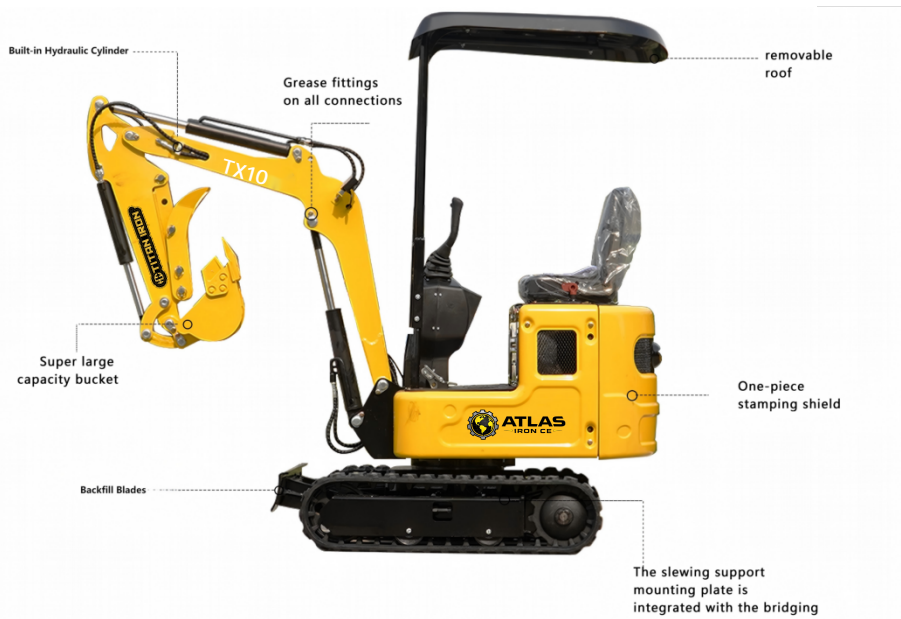




PRODUCT CHARACTERISTICS



Water-cooled Kubota D722 Engine

At the heart of the Atlas Iron AX10 is the reliable, fuel-efficient Kubota D722 engine. Designed to deliver strong performance with minimal environmental impact, it meets EPA Tier 4 standards. Low noise and low emissions ensure a quiet, operator-friendly experience on every job site.



Backfill Blades

The Atlas Iron AX10 comes equipped with a heavy-duty backfill blade featuring an integrated hydraulic cylinder. Engineered for precision and stability, it is ideal for grading, leveling, and pushing material across challenging terrain—delivering consistent, high-performance results with every pass.



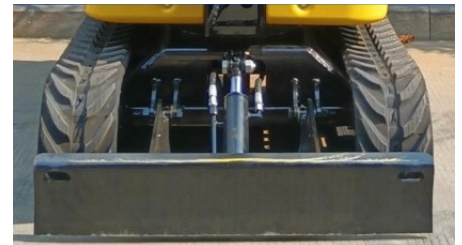
LED LIGHTS

High-intensity LED work lights deliver superior illumination, improving visibility and ensuring safer operation in low-light conditions.



Reinforced Chassis

The slewing support mounting plate is integrated into the bridge frame to increase structural strength and simplify the welding process.



Built-in Cylinder

Atlas Iron's innovative boom design integrates the hydraulic cylinder directly into the structure. This protected configuration shields critical components from damage in demanding operating conditions, while creating a cleaner profile and enhancing long-term durability with reduced maintenance requirements.





Machine Parameters

AX10

Key Specification	Operating Weight(lbs)	2200
	Bucket Capacity(ft.3)	0.49
	Travel Speed low/high speed(mph)	0-0.93
	Grade ability (%)	30%
	Ground pressure (Psi)	3.7
	Maximum Digging Force(lbf)	2068
	Maximum Digging Radius (in)	127
	Maximum Digging Depth (in)	72
	Maximum Digging Height (in)	118
	Maximum Unloading Height (in)	88
Engine & Performance	Engine Brand	KUBOTA
	Engine Model	D722
	Maximum Horsepower (hp)	11
	Maximum Power (Kw)	10.2
	Maximum Speed (rpm)	2500
	Displacement (gal)	0.19
	Numbers Of Cylinders	3
	Cooling Method	Water Cooling
	Engine Oil Change Amount (gal)	0.9
	Fuel Form	Diesel
	Fuel Grade	0/-10
	Theoretical Fuel Consumption (L/H)	1.1-1.5
Dimension	Transport Length (in)	95
	Transport Width (in)	35
	Transport Height (in)	86
	Bucket Width (in)	11.8
	Boom Length (in)	58.1
	Stick Length (in)	31.5
	Backfill Blades Width (in)	35
Hydraulic System	Main Pump Type/Model	Gear Pump / 306
	Main Pump Brand	TianJin Walking
	Main Pump Maximum Flow (GPM)	4.76
	Multi-Way Valve	2+2+5 Multi-way Valve
	Rate Set Pressure (psi)	2466
	Maximum Set Pressure (psi)	2611
	Travel Hydraulic Motor Type	WDM-300
	Displacement	315ml/r