

# ATH519

TELEHANDLER



**ATLAS**  
IRON CE



## Specification

### Capacities

Max. capacity	5511.56 lbs
Max. lifting height	19.69 ft
Max. outreach	7.09 ft

### Weight and dimensions

Overall length to carriage	l11	13.1 ft
Length to face of forks	l1	17.1 ft
Min transport size	l12	12.7 ft
Overall width	b1	6.6 ft
Track width	b2	5.6 ft
Overall height	h17	6.8 ft
Wheelbase	y	9.2 ft
Ground clearance	m4	0.8 ft
Overall cab width	b4	2.7ft
Tilt-up angle	a4	10 °
Tilt-down angle	a5	100 °
External turning radius(over tyres)	—	14.8 ft
Unladen weight(with fork)	—	12786.8 lbs
Tires type	—	Pneumatic
Standard tires	l/e/s	12-16.5
Forks length/ width/ section	—	4.0 ft x 0.4 ft / 0.2 ft

### Performances

Lifting	17 s
Lowering	11 s
Extension	11 s
Retraction	6.5 s
Crowd	3.1 s
Dump	3.0 s

### Engine

Engine brand	Kohler
Engine norm	EPA 4
Displacement	151.5 cu in
Engine model	KDI 2504TCR/23
Number of cylinders	4
I.C. Engine power rating - Power	74 hp
Max. torque	222lb/ft 1500rpm

### Transmission

Transmission type	Torque converte
Number of gears (forward / reverse)	4 / 4
Max. travel speed	21 mph
Parking brake	Disc brake
Service brake	Disc brake

### Hydraulics

Hydraulic pump type	Gear pump (optional piston pump)
Hydraulic flow	22.5 gal/min

### Tank capacities

Engine oil	1.5 gal
Hydraulic oil	187.6 gal
Fuel tank	21.1 gal

### Noise and vibration

Noise at driving position (LpA)	82 dB
Noise to environment (LwA)	105 dB
Vibration on hands / arms	< 8.20 ft/s <sup>2</sup>

### Miscellaneous

Steering wheels (front / rear)	2 / 2
Drive wheels (front / rear)	2 / 2
Safety cab homologation	FOPS level 2 cab

\*Parameters and dimensions are subject to the actual product



# ATH519

TELEHANDLER



# ATLAS

IRON CE

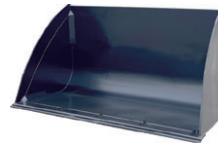
## ATTACHMENTS



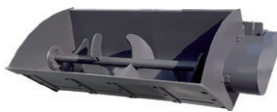
Brush Cutter



Rallet fork



Bucket



Mixed bucket



Crane Arm



Snow Blower



BaleFork



Road Roller



Road Sweeper



Grapple bucket

Large Cab for room to move around



lift cylinder



High shear forces



Easy to open engine hoo

