



# SPECIFICATION SHEET

# GK-15GT+

previously A-3006G/2TPL



Grey double terry knitted glove made of extra heavy-weight cotton with a 14-inch canvas cuff for enhanced protection and durability.



## BENEFITS

- Seamless design for superior comfort.
- Ambidextrous for versatile use.
- Safety cuff (canvas) provides extended arm protection.
- External terry ripple enhances temperature resistance.



## OPERATIONS

- Suitable for handling hot components intermittently, up to 250°C for 15 seconds.
- Ideal for manipulating pieces in ovens (not suitable for welding).



## INDUSTRY



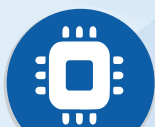
General Uses



Automotive



Metalmechanic



Electronics



Aeronautics



Appliances



LOW  
DEXTERITY



HIGH HEAT



DRY



EXTRA HEAVY  
WEIGHT  
(80-90 GRMS)



100 pairs /  
bag



Size

Gentleman

EN 407



X3XXXX



    **GUANTES INTERNACIONALES**  
“Safety and comfort for the industrial athlete”



# LIMITATIONS OF USE

## 1. Specific protection:

- Designed for mechanical risks: light cuts and abrasion.
- Does not offer protection against electrical hazards, fire, high temperatures, or chemicals.
- Not to be used for welding.
- Do not use in the presence of oil or grease.

## 2. Glove Integrity:

- **Do not use** if there is excessive wear, tears, or significant loss of coating, or if visible damage is present on the palm or fingers.