

## Regulator Packages

BMD's pressure control package offering includes both pressure reducing and back pressure packages. Packages are paired with one of BMD's control valves (ordered separately), and include a pressure controller, two regulators, a drip pot with drain, and all the interconnecting tubing. Pressure controllers are available for high, medium, and low pressure settings.

Packages are factory assembled and tested to save time in the field. Other benefits include an full port ball valve for a drip pot drain to prevent clogging, and the use of two regulators for a two stage pressure cut to prevent regulator freeze up.

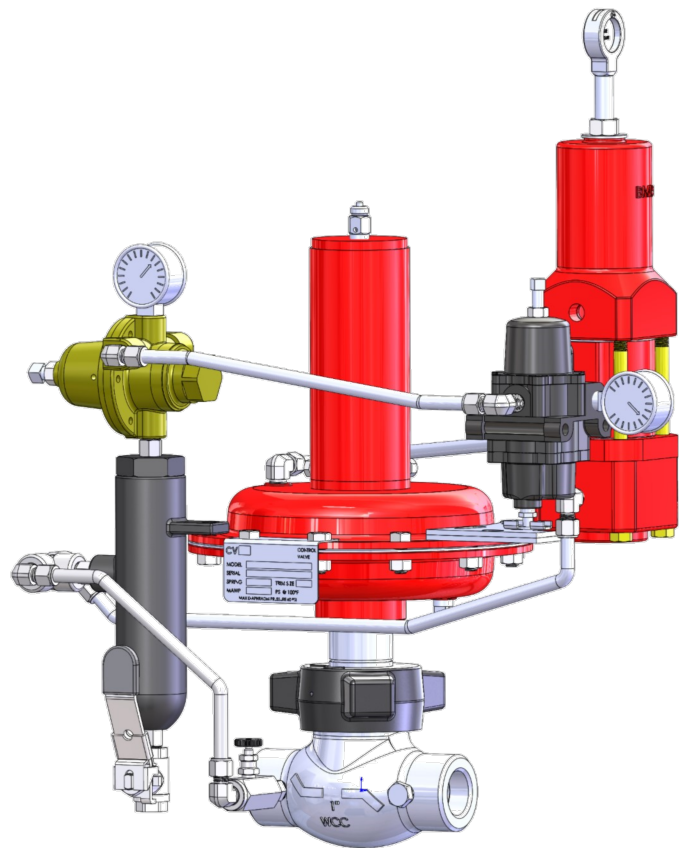
## Applications

### Back Pressure Packages:

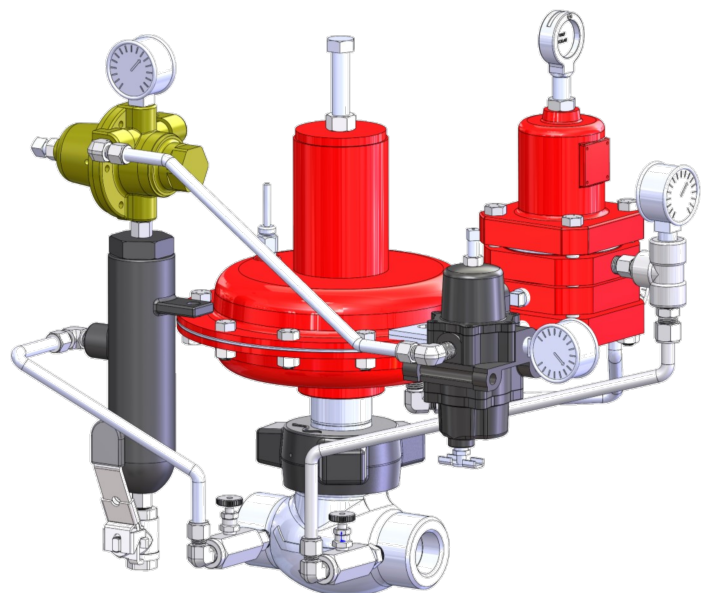
The Back Pressure Packages are used to hold a constant upstream pressure on a line or tank. A Back Pressure Package will typically be a reverse acting pressure controller paired with a direct acting (fail open) control valve. The pressure controller senses the upstream pressure and gives an output signal to the control valve actuator dome causing the control valve to open as the upstream pressure increases, and to close as it decreases.

### Pressure Reducing Packages:

The Pressure Reducing Packages are used to regulate pressure downstream of the valve. A Pressure Reducing Package will typically be a reverse acting pressure controller paired with a reverse acting (fail closed) control valve. The pressure controller senses the downstream pressure and gives an output signal to the control valve actuator dome causing the control valve to open as the downstream pressure decreases and to close as the pressure increases.



**BPP W/ PC88**



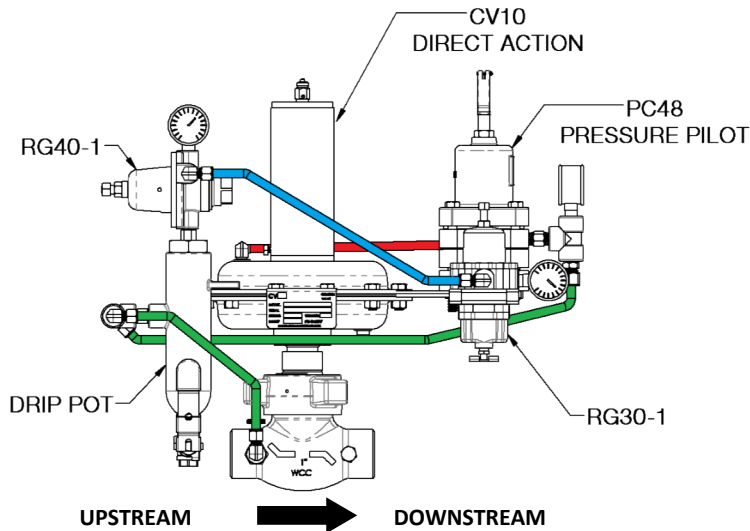
**PRP W/ PC48**

# Regulator Packages

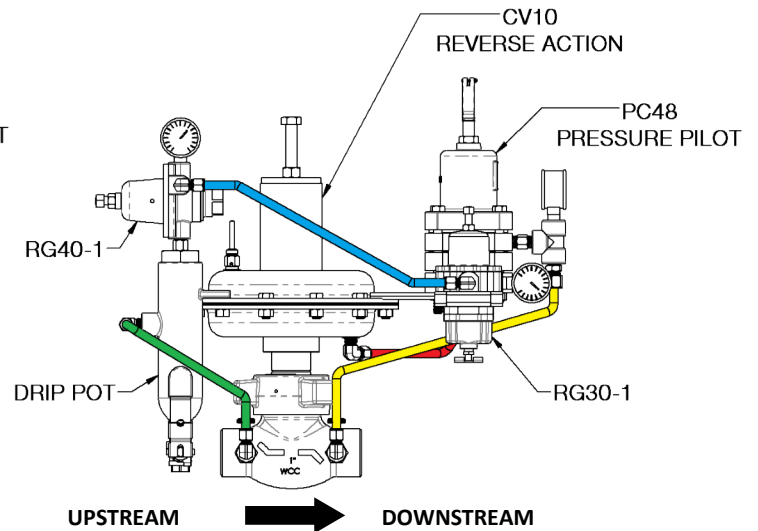


UPSTREAM PRESSURE  
DIAPHRAGM PRESSURE  
SENSE PRESSURE  
SUPPLY PRESSURE

**BPP PACKAGE**



**PRP PACKAGE**



## How to Order

Example Model No. **PRP-48L-B**

Pressure Reducing Package with PC48 Low Pressure (150 psi spring) Buna Seals

<b>Style</b>	
PRP— Pressure Reducing Package	BPP— Back Pressure Package
<b>Pilot</b>	
48L— PC48 w/150 psi Spring	48M— PC48 w/300 psi Spring
88L— PC88 w/500 psi Spring	88M— PC88 w/750 psi Spring
	88H— PC88 w/1500 psi Spring
<b>Seals</b>	
B— Buna	V— Viton

**PRP - 48L - B**

Beaumont Manufacturing  
**bmd**  
and Distribution Company  
www.beaumontmanufacturing.com

Phone: 409-225-5863  
Fax: 409-242-1005  
850 Fannin  
Beaumont, Texas 77701