

Regulator Packages

BMD's pressure control package offering includes both pressure reducing and back pressure packages. Packages are paired with one of BMD's control valves (ordered separately), and include a pressure controller, two regulators, a drip pot with drain, and all the interconnecting tubing. Pressure controllers are available for high, medium, and low pressure settings.

Packages are factory assembled and tested to save time in the field. Other benefits include a drip pot drain to prevent clogging, and the use of two regulators for a two stage pressure cut to prevent regulator freeze up.

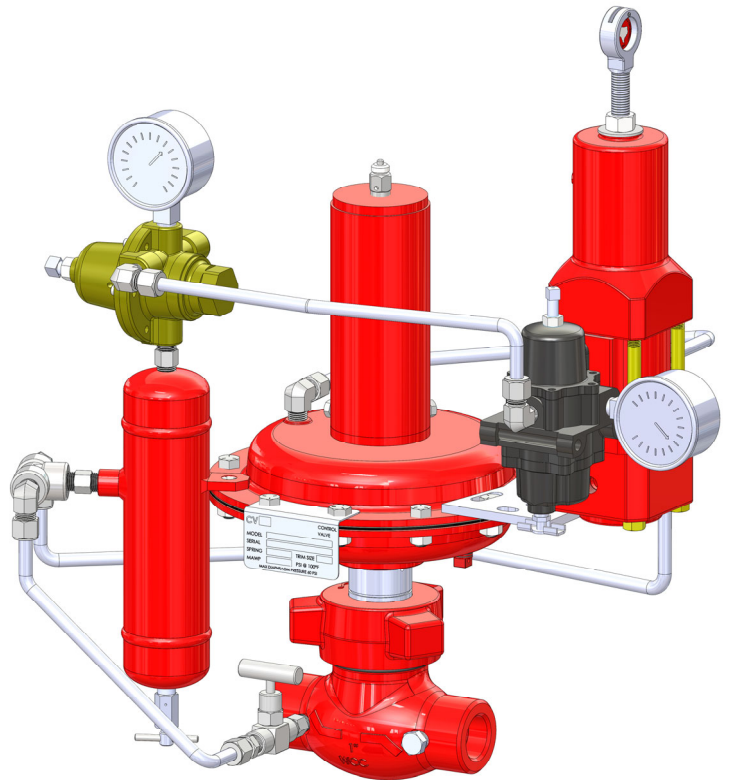
Applications

Back Pressure Packages:

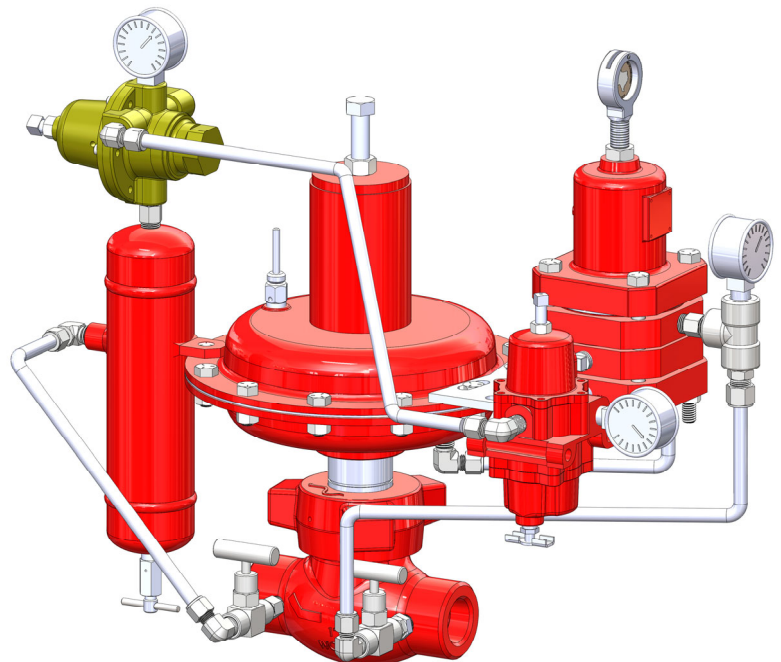
The Back Pressure Packages are used to hold a constant upstream pressure on a line or tank. A Back Pressure Package will typically be a reverse acting pressure controller paired with a direct acting (fail open) control valve. The pressure controller senses the upstream pressure and gives an output signal to the control valve actuator causing the control valve to open as the upstream pressure increases, and to close as it decreases.

Pressure Reducing Packages:

The Pressure Reducing Packages are used to regulate pressure downstream of the valve. A Pressure Reducing Package will typically be a reverse acting pressure controller paired with a reverse acting (fail closed) control valve. The pressure controller senses the downstream pressure and gives an output signal to the control valve actuator causing the control valve to open as the downstream pressure decreases and to close as the pressure increases.

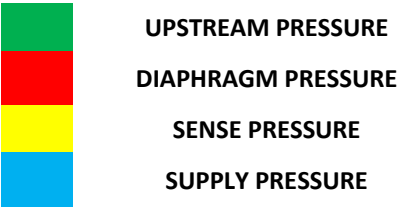


BPP W/ PC88

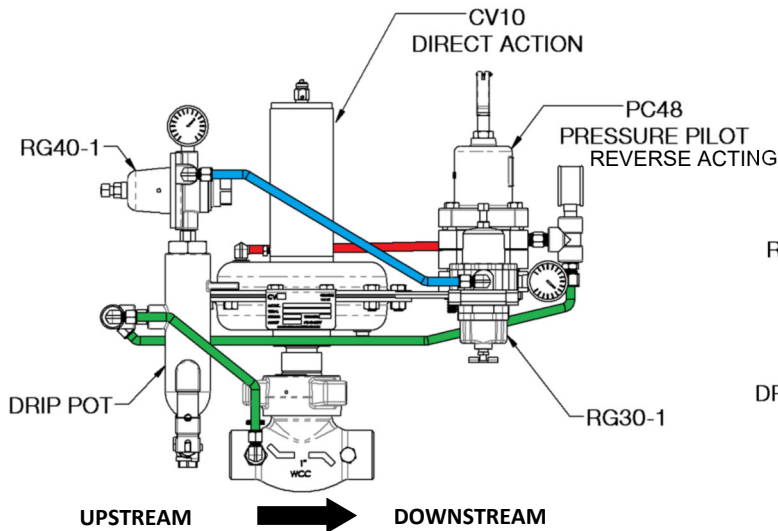


PRP W/ PC48

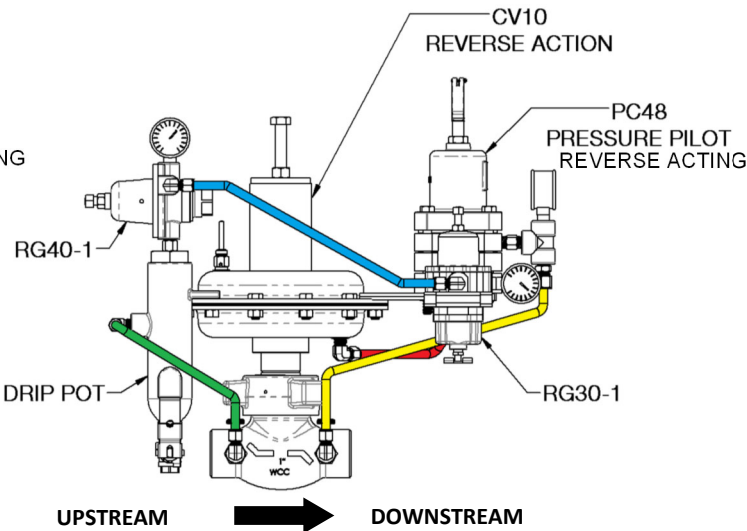
Regulator Packages



STANDARD BPP PACKAGE



STANDARD PRP PACKAGE



How to Order

Example Model No. **PRP-R48L-B**
 Pressure Reducing Package, Reverse pairing, with PC48 Low Pressure (150 psi spring), Buna Seals

PRP -R48L - B

Style		
PRP – Pressure Reducing Package	BPP – Back Pressure Package	
Valve Action - Package pairs with:		
R – Reverse (fail close) valve	D - Direct (fail open) valve	
Pilot		
28L - PC28 w/2.5 psi Spring	28M - PC28 w/5 psi Spring	28H - PC28 w/20 psi Spring
48L – PC48 w/150 psi Spring	48M – PC48 w/300 psi Spring	88L – PC88 w/500 psi Spring
88M – PC88 w/750 psi Spring	88H – PC88 w/1500 psi Spring	
Seals		
B – Buna	V – Viton	

Beaumont Manufacturing
bmd
 and Distribution Company
www.beaumontmanufacturing.com

Phone: 409-225-5863
 Fax: 409-242-1005
 850 Fannin St.
 Beaumont, Texas 77701