

LC70 LIQUID LEVEL CONTROLLER

The LC70 is a float operated liquid level control device sometimes referred to as a “trunnion” or a “float nose”. The LC70 utilizes a large float, linkage rod and levers to mechanically operate a dump valve via rotational connections.

The LC70 is available in 2 different body styles: Union and Bolted. The levers can easily be changed from the left to right to match the dump valve mount. Multiple parts and accessories are available to fit a wide variety of configurations.

When used with a CV45 mechanical valve, the LC70 can provide a level control/dump system that is completely emissions free.



SPECIFICATIONS

Sizes:

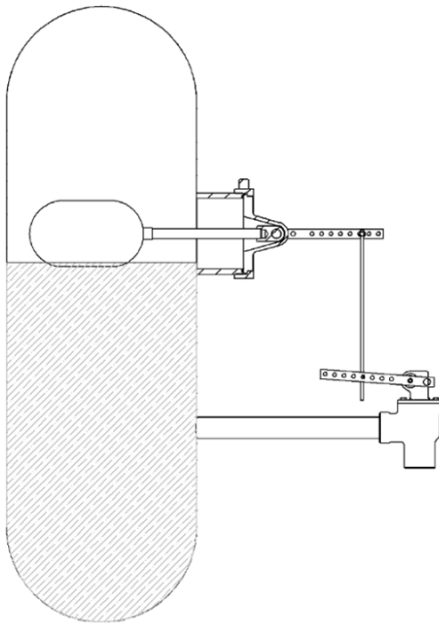
- 8” and 5” Union Connections
- 5” Bolted Connection

Pressure Rating:

- 500 psi

Temperature Range:

- -20° F to 400° F (-29° C to 204° C)



Typical installation of LC70 and CV45 mechanical valve.

MATERIALS

Body:

- A216 Gr WCC Steel

Float:

- Powder Coated Steel

Float Arm:

- 3/4” SST

Shaft:

- 304 SST

Bushings:

- 304 SST

Seals:

- Buna

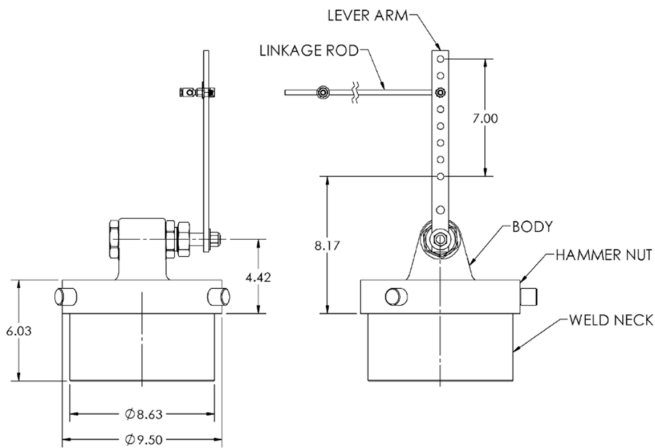
PARTS AND ACCESSORIES

(SOLD SEPARATELY)

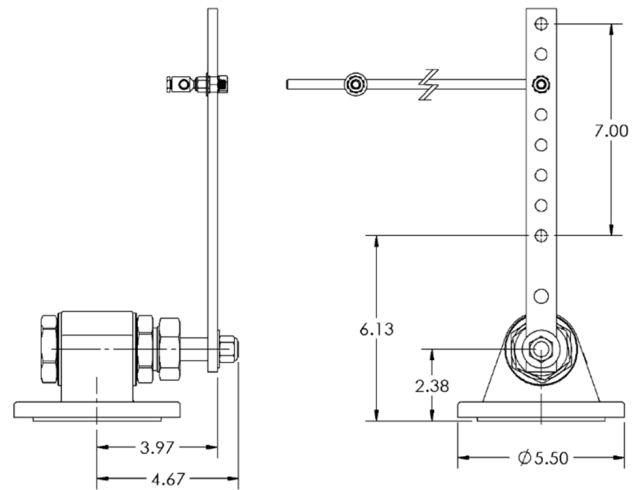
CATEGORY	P/N	DESCRIPTION
Float Arms	57-05-0415	Arm Float 12 Inch LC70 SST
	57-05-0492	Arm Float 24 Inch LC70 SST
Floats	57-05-0502	7” x 12” CS w/ Powder Coat

DIMENSIONS

UNION CONNECTION



BOLTED CONNECTION



HOW TO ORDER

EXAMPLE MODEL NO. **LC70U-8-51218**

LC70 Series Liquid Level Controller, 8" Union Connection, Standard Service, 5" Weld Neck, 12" Lever, 18" Linkage Rod

LC70U - **8** - **5** **12** **18**
SERIES

BASE MODEL		
LC70U - Union	LC70B - Bolted	
SIZE		
1 - Bolted	5 - 5" Union	8 - 8" Union
WELD NECK OPTIONS		
0 - None	5 - 5" Length	8 - 8" Length
1 - Hammer Nut Only	6 - 6" Length	
LEVER LENGTH		
12 - 12" (Standard)	24 - 24"	
18 - 18"	36 - 36"	
LINKAGE ROD		
18 - 18" (Standard)		

Float & Arm Sold Separately

No Weld Neck Option for Bolted LC70

BEAUMONTMANUFACTURING.COM

PHONE: 409.225.563 | FAX: 409.242.1005
850 FANNIN STREET, BEAUMONT, TEXAS 77701

04/2026

