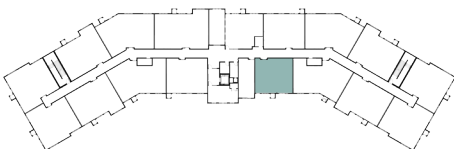
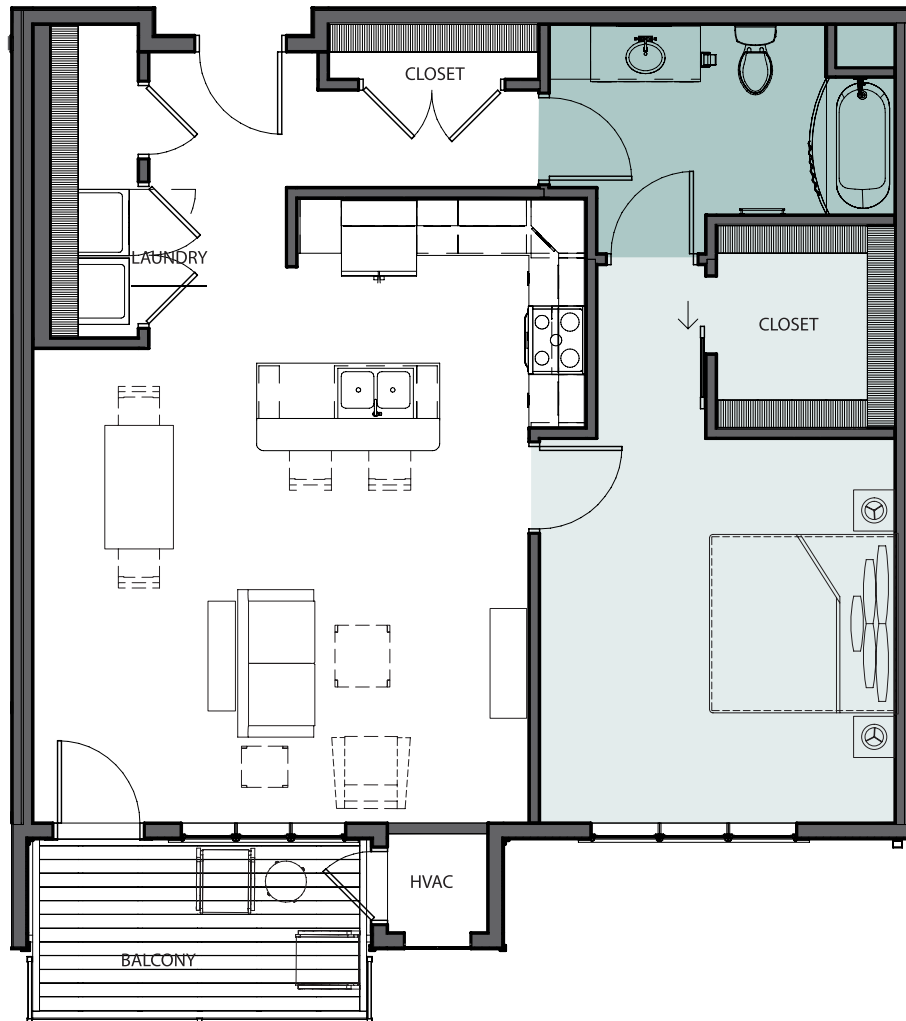


WREN

ONE BEDROOM, ONE BATH
921 SQ. FT.



*Actual dimensions may vary.
Plans are subject to change without notice.
Decorative furnishings are shown for illustrative purposes only.*



GRACEWIN
COOPERATIVE

ENJOY THE LIFE YOU HAVE EARNED!

WREN

ONE BEDROOM, ONE BATH
921 SQ. FT.

All residences are beautifully finished with professionally curated interior design packages. Each home has been uniquely tailored with quality selections of cabinet styles and colors, quartz countertops, luxury vinyl plank flooring, pendent lighting and other fixtures to offer upscale living experiences.

HOME FEATURES

- One bedroom, one bath
- Open concept floor plan
- En suite master bath
- Reach-in closet by entrance
- In-unit washer and dryer
- Dishwasher and microwave
- Walk-in closet in bedroom
- Breakfast counter
- Balcony or patio
- Upgraded finishes
- 9' ceilings

SPACE MEASUREMENTS

AREA	DIMENSIONS (approximate)
Living Room	18'0" x 13'5"
Kitchen	12'0" x 9'0"
Deck	6'6" x 12'2"
Bedroom 1	12'11" x 14'0"
Closet 1	6'6" x 7'4"
Bathroom 1	12'7" x 6'11"
Laundry Room	11'4" x 3'2"
Entrance Reach-In Closet	7'7" x 2'0"

GRACEWIN
COOPERATIVE

BRAINERD LAKES AREA
7084 Glory Road
Baxter, MN 56425

JOIN THE WAITING LIST!

(218) 454-7555

gracewinlivingbaxter@gmail.com
www.gracewinbrainerdlakes.com