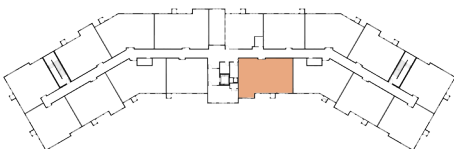
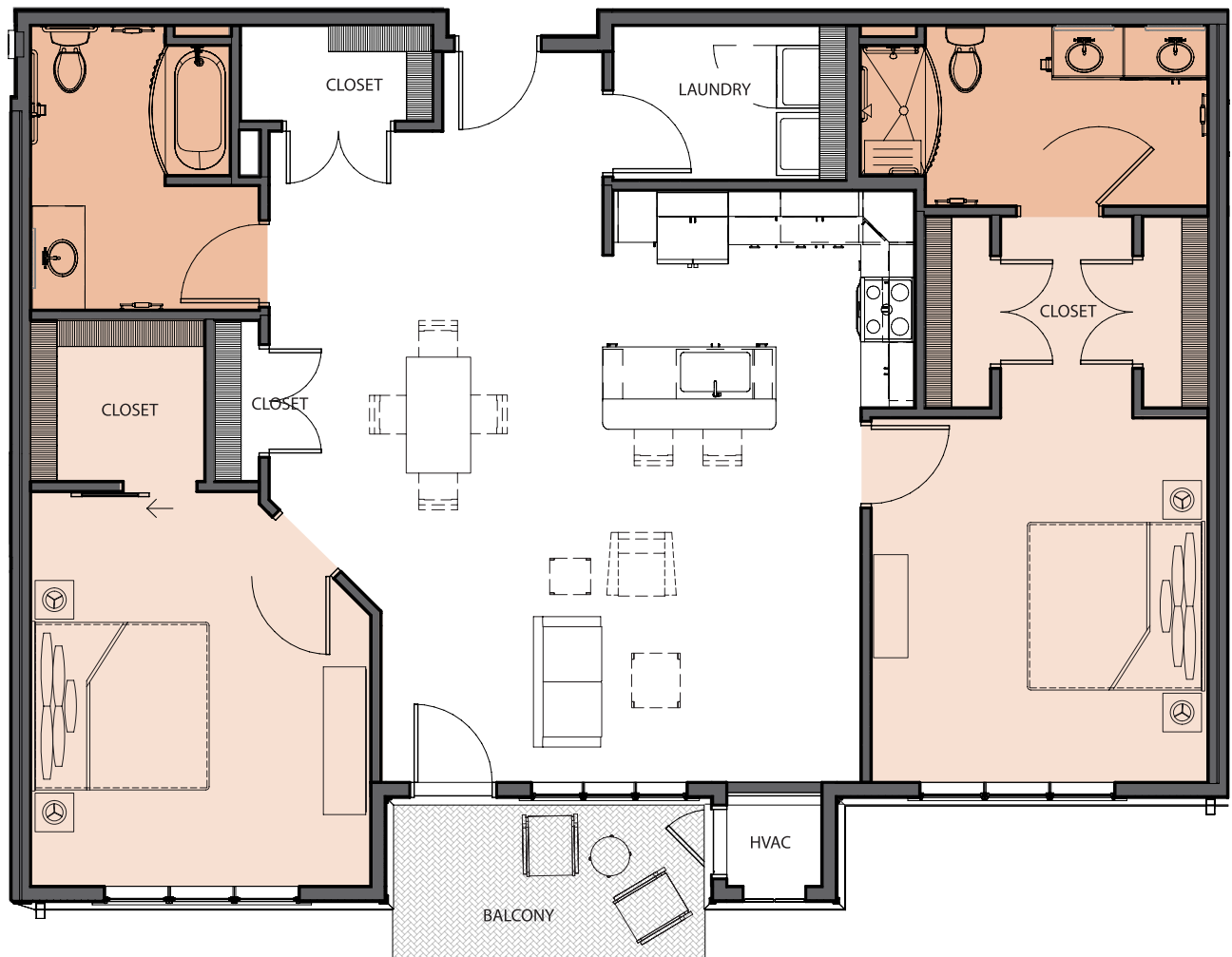


STARLING



TWO BEDROOM, TWO BATH
1,375 SQ. FT.



Actual dimensions may vary.
Plans are subject to change without notice.
Decorative furnishings are shown for illustrative purposes only.



GRACEWIN
COOPERATIVE

ENJOY THE LIFE YOU HAVE EARNED!

STARLING



TWO BEDROOM, TWO BATH
1,375 SQ. FT.

All residences are beautifully finished with professionally curated interior design packages. Each home has been uniquely tailored with quality selections of cabinet styles and colors, quartz countertops, luxury vinyl plank flooring, pendent lighting and other fixtures to offer upscale living experiences.

HOME FEATURES

- Two bedroom, two baths
- Wheelchair accessible
- Open concept floor plan
- En suite master bath
- Walk-in closets
- Washer and dryer
- Walk-in tub option
- Dishwasher and microwave
- Breakfast counter
- Balcony or patio
- Upgraded finishes
- 9' ceilings

SPACE MEASUREMENTS

AREA	DIMENSIONS (approximate)
Living Room	13'7" x 18'5"
Kitchen	12'0" x 9'1"
Deck or Balcony	12'0" x 6'0"
Bedroom 1	12'11" x 14'0"
Closet 1	2'6" x 7'4" (x2)
Bathroom 1	6'11" x 13'4"
Bedroom 2	15'2" x 13'0"
Closet 2	6'8" x 6'2"
Bathroom 2	7'3" x 11'10"
Laundry Room	8'11" x 5'11"
Entrance Walk-In Closet	3'8" x 7'4"
Dining Reach-In Closet	2'0" x 6'3"

GRACEWIN
COOPERATIVE

BRAINERD LAKES AREA
7084 Glory Road
Baxter, MN 56425

JOIN THE WAITING LIST!

(218) 454-7555

gracewinlivingbaxter@gmail.com
www.gracewinbrainerdlakes.com