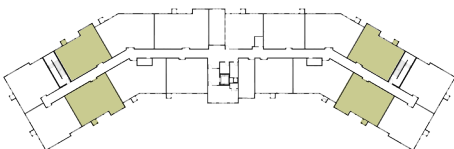
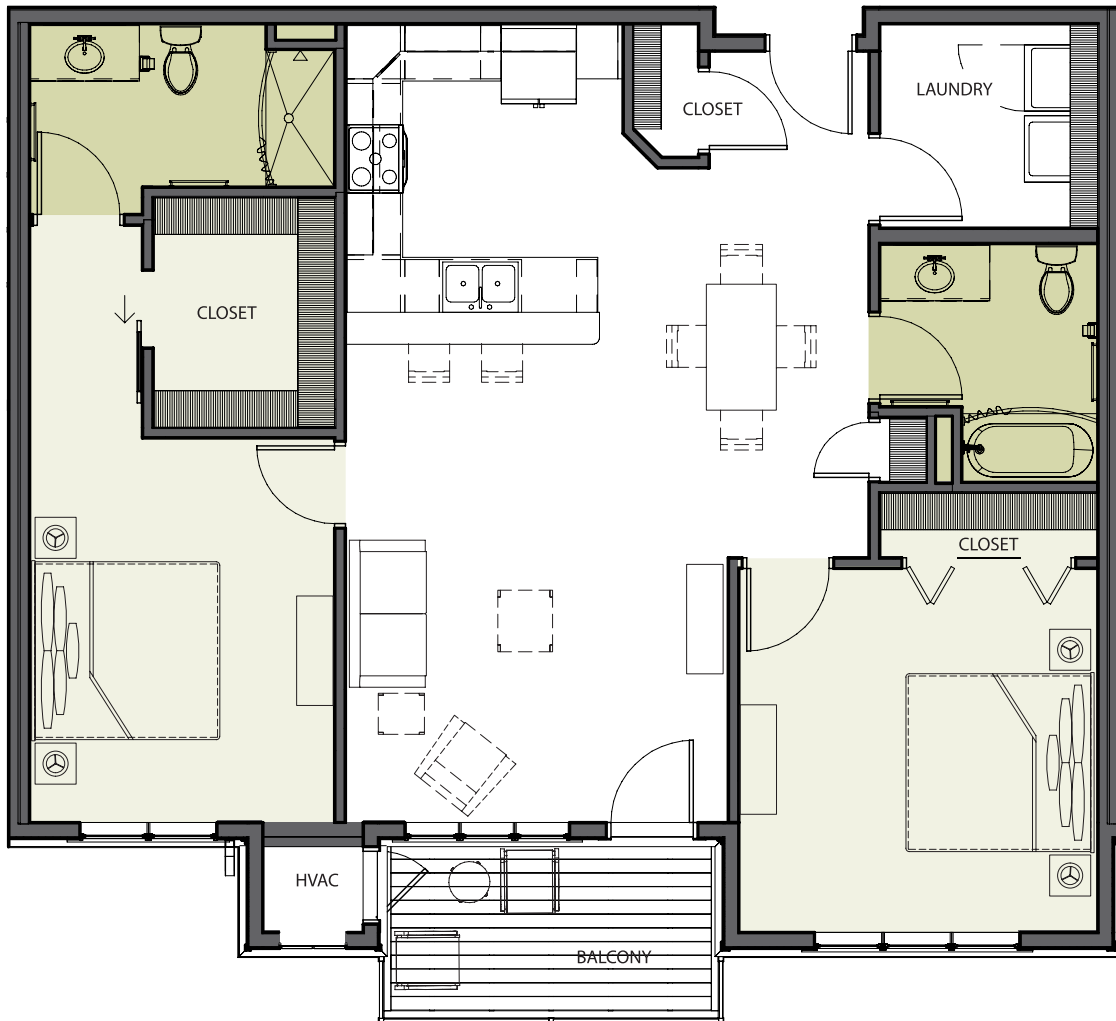


# GOLDFINCH

TWO BEDROOM, TWO BATH  
1,191 SQ. FT.



Actual dimensions may vary.  
Plans are subject to change without notice.  
Decorative furnishings are shown for illustrative purposes only.



GRACEWIN  
COOPERATIVE

ENJOY THE LIFE YOU HAVE EARNED!

# GOLDFINCH

TWO BEDROOM, TWO BATH  
1,191 SQ. FT.

All residences are beautifully finished with professionally curated interior design packages. Each home has been uniquely tailored with quality selections of cabinet styles and colors, quartz countertops, luxury vinyl plank flooring, pendent lighting and other fixtures to offer upscale living experiences.

## HOME FEATURES

- Two bedroom, two baths
- Open concept floor plan
- En suite master bath
- Handicap accessible
- In-unit washer and dryer
- Dishwasher and microwave
- Walk-in closets in bedrooms
- Walk-in tub
- Breakfast counter
- Balcony or patio
- Upgraded finishes
- 9' ceilings

## SPACE MEASUREMENTS

AREA	DIMENSIONS (approximate)
Living Room	13'11" x 17'9"
Kitchen	10'2" x 11'6"
Deck or Balcony	6'7" x 12'2"
Bedroom 1	11'1" x 14'0"
Closet 1	6'7" x 8'4"
Bathroom 1	5'11" x 11'1"
Bedroom 2	13'3" x 13'0"
Closet 2	2'0" x 8'0"
Bathroom 2	8'8" x 7'11"
Laundry Room	7'11" x 7'5"
Entrance Reach-In Closet	2'4" x 5'0"

## RENDERINGS



GRACEWIN  
COOPERATIVE

BRAINERD LAKES AREA  
7084 Glory Road  
Baxter, MN 56425

## JOIN THE WAITING LIST!

**(218) 454-7555**

gracewinlivingbaxter@gmail.com  
www.gracewinbrainerdlakes.com