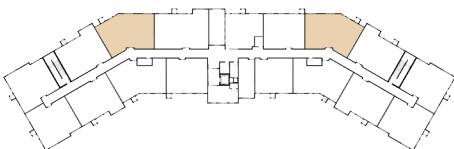


# CARDINAL

TWO BEDROOM, TWO BATH  
1,305 SQ. FT.



Actual dimensions may vary.  
Plans are subject to change without notice.  
Decorative furnishings are shown for illustrative purposes only.



GRACEWIN  
COOPERATIVE

ENJOY THE LIFE YOU HAVE EARNED!

# CARDINAL

TWO BEDROOM, TWO BATH  
1,305 SQ. FT.

All residences are beautifully finished with professionally curated interior design packages. Each home has been uniquely tailored with quality selections of cabinet styles and colors, quartz countertops, luxury vinyl plank flooring, pendent lighting and other fixtures to offer upscale living experiences.

## HOME FEATURES

- Two bedroom, two baths
- Open concept floor plan
- En suite master bath
- Walk-in closets
- In-unit washer and dryer
- Walk-in tub
- Dishwasher and microwave
- Breakfast counter
- Balcony or patio
- Upgraded finishes
- 9' ceilings

## SPACE MEASUREMENTS:

AREA	DIMENSIONS (approximate)
Living Room	13'6" x 17'9"
Kitchen	9'2" x 12'0"
Deck or Balcony	10'11" x 6'8"
Bedroom 1	14'0" x 11'11"
Closet 1	8'4" x 5'4"
Bathroom 1	5'11" x 13'3"
Bedroom 2	12'4" x 12'7"
Closet 2	8'5" x 5'11"
Bathroom 2	10'10" x 5'6"
Laundry Room	6'7" x 6'11"
Entrance Reach-In Closet	2'5" x 6'0"

GRACEWIN  
COOPERATIVE

BRAINERD LAKES AREA  
7084 Glory Road  
Baxter, MN 56425

## JOIN THE WAITING LIST!

**(218) 454-7555**

gracewinlivingbaxter@gmail.com  
www.gracewinbrainerdlakes.com