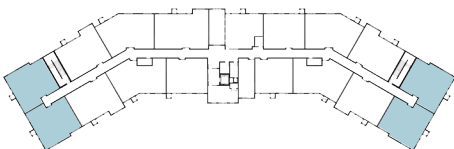
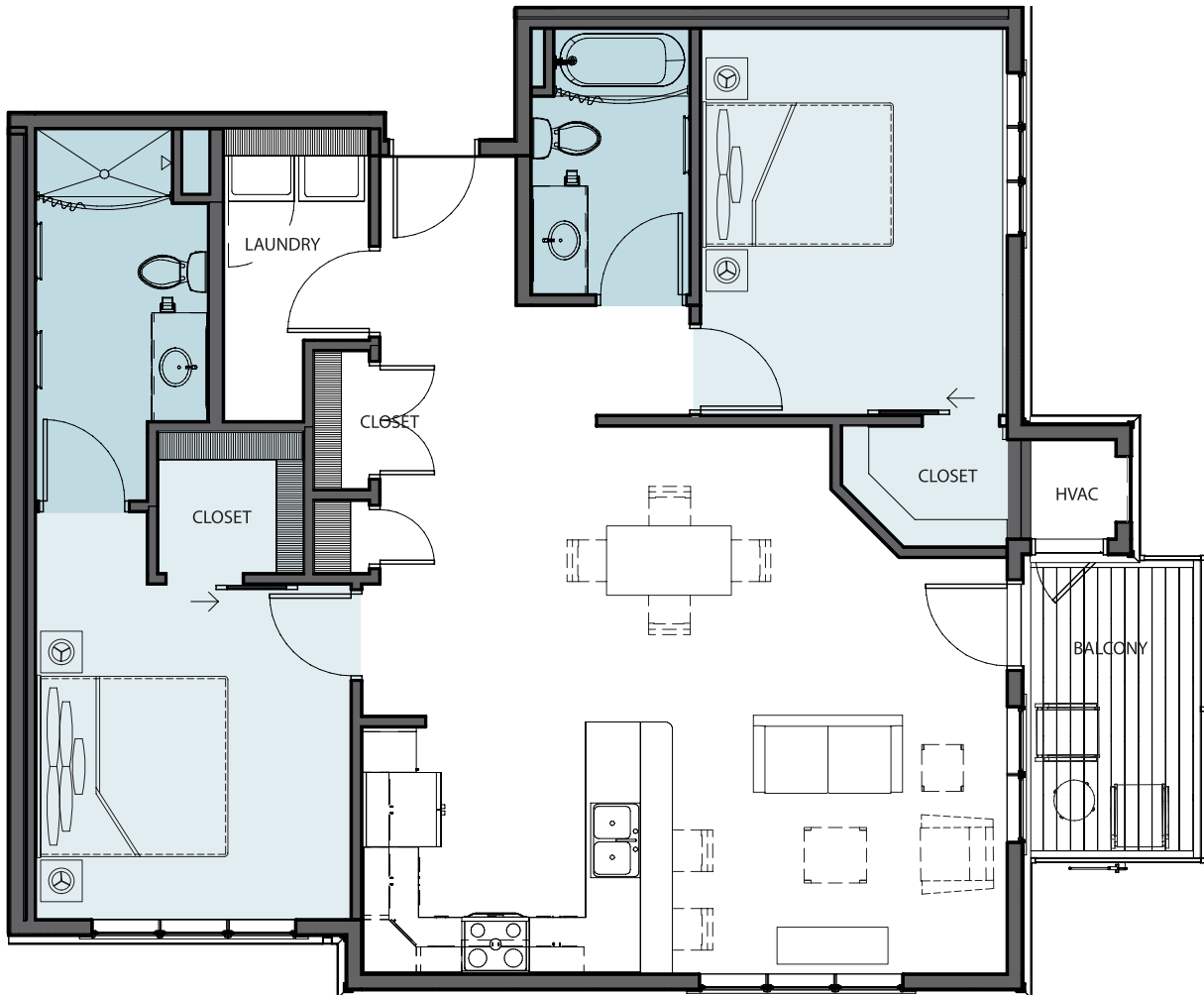


BLUEBIRD

TWO BEDROOM, TWO BATH
1,160 SQ. FT.



*Actual dimensions may vary.
Plans are subject to change without notice.
Decorative furnishings are shown for illustrative purposes only.*



GRACEWIN
COOPERATIVE

ENJOY THE LIFE YOU HAVE EARNED!

BLUEBIRD

TWO BEDROOM, TWO BATH
1,160 SQ. FT.

All residences are beautifully finished with professionally curated interior design packages. Each home has been uniquely tailored with quality selections of cabinet styles and colors, quartz countertops, luxury vinyl plank flooring, pendent lighting and other fixtures to offer upscale living experiences.

HOME FEATURES

- Two bedroom, two baths
- Open concept floor plan
- En suite master bath
- Walk-in closets
- In-unit washer and dryer
- Walk-in tub
- Dishwasher and microwave
- Reach in closets at entrance
- Breakfast counter
- Balcony or patio
- Upgraded finishes
- 9' ceilings

SPACE MEASUREMENTS

AREA	DIMENSIONS (approximate)
Living Room	12'0" x 20'1"
Kitchen	11'5" x 9'0"
Deck or Balcony	6'7" x 10'11"
Bedroom 1	11'3" x 14'2"
Closet 1	6'1" x 4'5"
Bathroom 1	5'10" x 9'10"
Bedroom 2	11'7" x 12'4"
Closet 2	5'4" x 5'2"
Bathroom 2	10'4" x 6'4"
Laundry Room	5'4" x 10'8"
Entrance Reach-In Closet	2'0" x 5'6"

RENDERINGS



GRACEWIN
COOPERATIVE

BRAINERD LAKES AREA
7084 Glory Road
Baxter, MN 56425

JOIN THE WAITING LIST!

(218) 454-7555

gracewinlivingbaxter@gmail.com
www.gracewinbrainerdlakes.com