

# GOLDFINCH

COMBINED Finishing Styles





GRACEWIN LIVING  
COOPERATIVES

The following renderings are for illustrative purposes only.  
They are intended to show the design intent of finishes offered.

Such finishes are subject to change without notice.

Decorative furnishings are for illustrative purposes only.











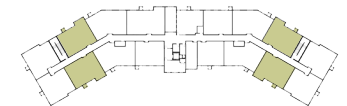












Actual dimensions may vary.

Plans are subject to change without notice.

Decorative furnishings shown for illustrative purposes only.

GOLDFINCH

TWO BEDROOM, TWO BATH - 1,191 SQ. FT.



GRACEWIN LIVING  
COOPERATIVES

WANT TO LEARN MORE?

[www.gracewinliving.com](http://www.gracewinliving.com)

(855) 472-2396

Follow Us on Social Media!

