

# St. Catherine & St. Leo Catholic Parishes



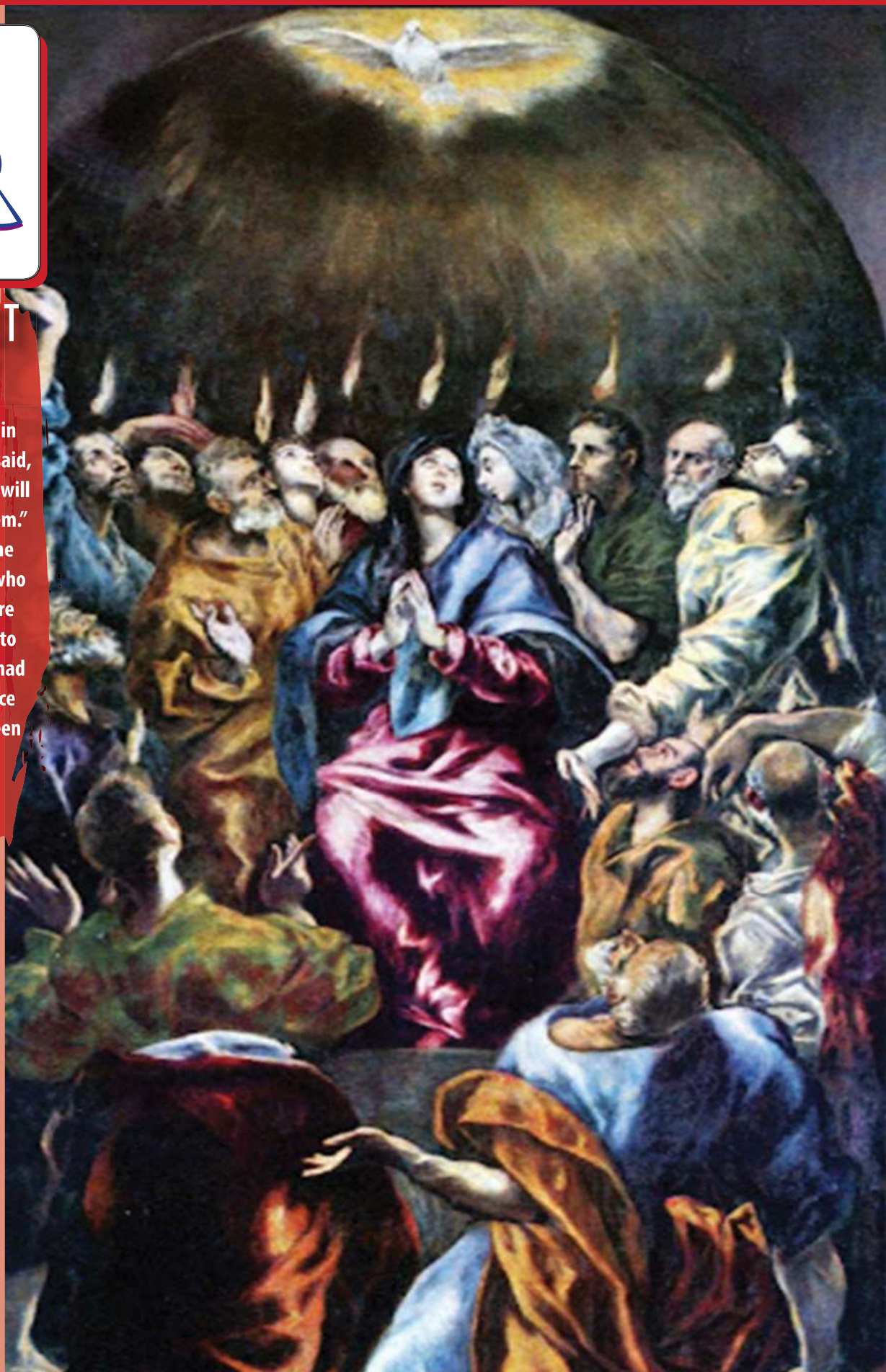
May 24, 2026

## PENTECOST SUNDAY

“Whoever believes in me, as Scripture has said, rivers of living water will flow from within them.”

By this he meant the Spirit, whom those who believed in him were later to receive. Up to that time the Spirit had not been given, since Jesus had not yet been glorified.

John 7:38-39



# FROM THE DESK OF FR. JOSHUA ...

**Eucharistic Devotion:** “We must always have courage, and if some spiritual languor comes upon us, let us run to the feet of Jesus in the Blessed Sacrament, and let us place ourselves in the midst of the heavenly perfumes, and we will undoubtedly regain our strength.” – St. Padre Pio of Pietrelcina.

**Corpus Christi Procession:** Weather permitting, there will be a Eucharistic Procession around the Church for the Solemnity of Corpus Christi, Sunday, June 7th. Deacon Kevin will lead the one at St. Catherine’s and I will lead the one at St. Leo’s. If anyone is willing to help coordinate the procession and/or help with music, please let me know.

**Parish Directory Update:** The first few days of photos have been completed. A few gentle reminders: please be prompt to your appointment as to not cause a delay for the appointments after you, and please make sure you know the correct location for your appointment. The photogra-

phers will be at St. Catherine’s on June 8-10 and June 22. The photographers will be at St. Leo’s June 11-13 and 23.

**Memorial Day Mass:** Monsignor Kosse will celebrate Mass at St. Mary’s Cemetery in Ellsworth at 9 AM on Monday, May 25th in honor of Memorial Day. In case of inclement weather, the location will be moved to St. Catherine’s Church in Luverne. Please bring your own chairs to sit on for Mass.

**St. Leo Construction Project:** The construction project to repair the east entrance sidewalk and build the maintenance shed is scheduled to begin this week pending weather. Thank you for your patience. Be advised that the east entrance will be closed for approximately two weeks. The west entrance by the parish office is handicap accessible.

Know that you are in my daily prayers. I know I am in yours. -Fr. Joshua

---

## DEL ESCRITORIO DEL PR. JOSHUA...

**Devoción eucarística:** «Debemos tener siempre valor, y si nos invade algún desánimo espiritual, corramos a los pies de Jesús en el Santísimo Sacramento, y sumerjémonos en los perfumes celestiales, y sin duda recuperaremos nuestras fuerzas». – San Padre Pío de Pietrelcina.

**Procesión del Corpus Christi:** Si el clima lo permite, habrá una procesión eucarística alrededor de la iglesia para la solemnidad del Corpus Christi, el domingo 7 de junio. El diácono Kevin dirigirá la de Santa Catalina y yo la de San León. Si alguien está dispuesto a ayudar a coordinar la procesión y/o a encargarse de la música, por favor avísenme.

**Actualización del Directorio Parroquial:** Ya se han completado los primeros días de fotos. Unos cuantos recordatorios amables: por favor, sean puntuales a su cita para no causar un retraso en las citas posteriores a la suya, y por favor asegúrense de saber la ubicación correcta para su cita. Los fotógrafos estarán en Santa Catalina del 8 al 10 de junio y el 22 de junio. Los fotógrafos estarán en San León

del 11 al 13 de junio y el 23 de junio.

**Misa del Día de los Caídos:** Monseñor Kosse celebrará una misa en el cementerio St. Mary’s de Ellsworth a las 9:00 a. m. del lunes 25 de mayo en honor al Día de los Caídos. En caso de mal tiempo, la misa se trasladará a la iglesia St. Catherine’s de Luverne. Por favor, traigan sus propias sillas para sentarse durante la misa.

**Proyecto de construcción de St. Leo:** El proyecto de construcción para reparar la acera de la entrada este y construir el cobertizo de mantenimiento está programado para comenzar esta semana, dependiendo del clima. Gracias por su paciencia. Tengan en cuenta que la entrada este permanecerá cerrada durante aproximadamente dos semanas. La entrada oeste, junto a la oficina parroquial, es accesible para personas con discapacidad.

Sepan que están en mis oraciones diarias. Sé que yo estoy en las tuyas. -P. Joshua

**FRIDAYS WITH FATHER:** In an effort to be more accessible to parishioners and families, Fr. Joshua is blocking Friday evenings off in his calendar as reserved to visit with parishioners. If you would like to receive a visit from Fr. Joshua on a Friday evening, please contact him at pastor@stscl.org or (507) 283-3663.

**VIERNES CON EL PADRE JOSHUA:** En un esfuerzo por ser más accesible para feligreses y familias, el P. Joshua está reservando las tardes de viernes en su calendario para visitar a los feligreses. Si desea recibir una visita del padre Joshua un viernes por la noche, por favor contáctele en el pastor@stscl.org o al (507) 283-3663.

# LITURGICAL SCHEDULE: May 25-31, 2026

**Monday, May 25th** *Memorial Day Mass*

9:00 AM Mass at St. Mary Cemetery Ellsworth, MN

\*\* Mass will be moved to St. Catherine if weather does not cooperate

**Tuesday, May 26th** *Saint Philip Neri, Priest*

4:30 AM Confession Available

5:15 PM Mass at St. Catherine.....Mrs. Luz Aldea Fadallon†

**Wednesday, May 27th** *Saint Augustine of Canterbury, Bishop*

11:00 AM Solemn Exposition and Confession Available

12:15 PM Mass at St. Leo..... Rita Paulsen†

**Thursday, May 28th**

4:30 PM Confession Available

5:15 PM Mass at St. Leo..... Ed O’Hearn†

**Friday, May 29th** *Saint Paul VI, Pope*

11:30 AM Confession Available

12:15 PM Mass at St. Catherine.....Richard Cylkowski†

**Saturday, May 30th** *The Most Holy Trinity*

4:00PM Confession Available

5:00 PM Mass at St. Catherine.....For the Parishioners

**Sunday, May 31st** *The Most Holy Trinity*

8:00AM Confession Available

8:30 AM Mass at St. Catherine . Vern & Joyce Croegaert†

**Sunday, May 31st** *The Most Holy Trinity*

10:30 AM Mass at St. Leo..... Gerry Halbur†

Mass will be Live Streamed on YouTube at:

<https://www.youtube.com/@St.CatherineChurch>

## Saturday, May 30 ~ 5:00 PM

Rosary	Arlene Kellen
Lector	OPEN
Servers	Ashlyn & Micaela Hemme
Ushers	Roger & Lisa Hoff
Sacristans	Nancy Lange

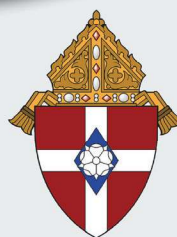
## Sunday, May 31 ~ 8:30 AM

Rosary	Mary Jo Nath
Gift Bearers	
Lector	OPEN
Servers	Tenlee Pick , need 1
Ushers	Russell & Egypt Forrest
Extraordinary Ministers	Mary O’Toole Hemme & Mary Jo Nath
Sacristans	Lana Henrichs
Video	Elijah Henrichs

## Sunday, May 31 ~ 10:30 AM

Rosary	Marlene Arens
Lector	Mylan Ray, Mary Laphorn
Servers	Jack Goelz, Noble Baatz, Junior Baatz
Ushers	Mike Appel, Larry Goelz, Iva Witte, Xavier Banjoko
Extraordinary Ministers	Jerry Van Hoecke, Kim Van Hoecke
Sacristans	Ian Cunningham
Music	Cindy Koenders, Lori Goelz

## I WILL MAKE YOU FISHERS OF MEN



Diocese of Winona-Rochester  
MINNESOTA



2026  
Catholic  
Ministries  
Appeal



Scan the code  
to donate online

**Thank you for supporting the Catholic Ministries Appeal.  
Every gift makes a difference!**

Your gift supports ministries and services that carry forth the Diocese of Winona-Rochester’s mission and vision, including faith formation, vocations discernment, Hispanic ministry, and many more.

# IGLESIA CATOLICA DE SAN LEO

**MISA DEL DÍA DE LOS CONMEMORATIVOS:** Solo un recordatorio de que la misa del Día de los Caídos ha estado rotando entre los cementerios católicos. Este año será en el cementerio de St. Mary's en Ellsworth, MN. Si el tiempo se convierte en un problema, la misa se trasladará a la iglesia de Santa Catalina. Todos son bienvenidos y por favor traed su propia silla.

**EDUCACIÓN CATÓLICA - ST. LEO'S PIPESTONE:** ¡La cooperativa de educación en casa Divine Mercy Classical está buscando tutores o profesores! El puesto incluye enseñar tres días a la semana en St. Leo's en Pipestone, así como proporcionar instrucciones detalladas a los padres durante dos días de educación en casa. Los candidatos interesados deben enviar sus currículums a [admin@divinemercyclassical.com](mailto:admin@divinemercyclassical.com)

**CARTUCHOS DE TINTA VACÍOS:** St. Leo ya no está colectando cartuchos de tinta vacíos. ¡Gracias por tu apoyo a este proyecto anterior!

**ADORACIÓN:** ¡Pasa una hora con Jesús! Nos gustaría seguir ofreciendo adoración los jueves de 12:00 a 17:00, nos quedan tres plazas por cubrir para poder ofrecer este tiempo de oración en presencia de Jesús. Por favor, llama o envía un mensaje a Ann

¡Esta es la última semana de preescolar! Hemos tenido un gran año. Estamos muy agradecidos por todo vuestro amor, oraciones y apoyo económico que hemos recibido de cada uno de vosotros. ¡No podríamos tener este programa sin él! Seguimos teniendo algunas vacantes en cada clase y nos gustaría que tu hijo se uniera a nosotros. Por favor, contacte con la oficina de la iglesia en el 507-825-3152 o al 507-360-4362. ¡Nos encantaría ayudar a que tu hijo se inscriba en preescolar! Gracias, *El Arca de Noé*.



al 507-828-3675 si puedes inscribirte durante una hora, el horario de apertura es a las 12:00 y a las 15:00. ¡Considera inscribirte con un amigo y compartir el compromiso! ¡Gracias por rezar por esto!

**OFICINA CERRADA:** La oficina de St. Leo estará cerrada el lunes 25 de mayo de 2026, en conmemoración del Día de los Caídos.

**CARPETAS DE LA PRIMERA COMUNIÓN:** Las carpetas de la primera comunión, que se pueden encontrar en el vestíbulo, ya pueden llevarse a casa.

**DIRECTORIO DE LA IGLESIA:** ¡Si aún no has hecho tu cita para tomar las fotos para el Directorio de la Iglesia, todavía hay tiempo! Puedes hacer tu cita en línea, solo tienes que ir a [www.ucdir.com](http://www.ucdir.com) código es mn632, contraseña: membermn632. Si tiene preguntas adicionales contacte a los siguientes felegrises: Kim Van Hoecke –

507-820-9450, Deb Hagedorn – 319-360-9568, Laurie Bucher – 507-350-9038

**APELACIÓN DE LOS MISTERIOS CATÓLICOS:** Cuando Jesús dice: “Os haré pescadores de hombres”, nos llamó a la gran aventura del discipulado. A través de la Campaña de Ministerios Católicos, ayudamos a compartir esa misión en toda nuestra diócesis. Por favor, haga su donación a nombre de la Diócesis de Winona-Rochester. ¡Gracias!

**CLASES DE PREPARACIÓN PARA EL BAUTISMO EN SAN LEO:** Si tienes un niño que bautizar, aquí tienes las fechas en que comenzarán las clases. Domingos, 6, 13, 20 y 27 de septiembre. 9am-10am. Se ofrecerán dos veces al año y, después de que los padres lo hayan hecho para un hijo, no es necesario repetirlo para otros hijos. Las clases deben completarse antes de programar el Bautismo.

## ST. LEO'S HAPPENINGS: News & Announcements

**PRAYER PETITIONS FOR THE SICK:** Patt Johnson, Marilyn Flanagan, Mitzi Baustian, Randy Janssen, Rose Slinger, Benjamin Ribble, Fred Portz, Lori McGee, Duane Carlson, Bunny & Brad Johnson, and Kay Dubbelde. *May they know of our prayers in their time of need.*

**MEMORIAL DAY MASS:** Just a reminder that the Memorial Day Mass has been on rotation between the Catholic Cemeteries. This year it will be at St. Mary's Cemetery in Ellsworth, MN. If the weather becomes an issue, the Mass will be moved to St. Catherine's Church. All are welcome and please bring your own chair.

**MIDYEAR FINANCIAL STATEMENTS:** St. Leo and St. Catherine will not be sending 6-month financial statements. If you

would like to receive one, please reach out to the Parish Office.

**CATHOLIC EDUCATION - ST. LEO'S PIPESTONE:** Divine Mercy Classical homeschool co-op is looking for tutor/teachers! The position includes teaching three days a week at St. Leo's at Pipestone, as well as providing detailed instructions for parents for two homeschool days. Interested candidates should send their resumes to [admin@divinemercyclassical.com](mailto:admin@divinemercyclassical.com)

**EMPTY INK CARTRIDGES:** St. Leo is **NO LONGER** collecting empty ink cartridges. Thank you for your support of this past project!

**PARISH INFORMATION:** The next Pastoral Council Meeting will be on Thursday, May 28th at 7:00 PM at St. Catherine's

in Doyle Hall. The St. Catherine Finance Council Meeting (+ Budget) will be at St. Catherine's on Wednesday, June 3rd at 5:30 PM in the Centennial Room. The St. Leo Finance Council Meeting (+Budget) will be on Wednesday, June 10th at 6:30 PM in the Last Supper Room.

**ADORATION:** *Spend an Hour with Jesus!* We would like to continue to offer adoration on Thursdays from noon to 5 pm, we have three spots left to fill to be able to offer this time of prayer in the presence of Jesus. Please call or text Ann at 507-828-3675 if you can sign up for an hour, times open are 12:00 and 3:00 PM. Consider signing up with a friend and sharing the commitment! Thank you for praying about this!

# ST. LEO'S HAPPENINGS: News & Announcements

**CATHOLIC MINISTRIES APPEAL!** When Jesus says, "I Will Make You Fishers of Men" He called us into the great adventure of discipleship. Through the Catholic Ministries Appeal, we help share that mission across our diocese. Please make your donation payable to **Diocese of Winona-Rochester**. Goal: \$27,282 | **\$22,282 Left to go!**

CMA Pledges as of	Donors	Received	Percentage
May 21, 2026	17	\$4,875	17.87%

## +REST IN PEACE+



We extend our deepest sympathy to the family and friends of **Mary Meyer**. She passed away on May 9, and her Funeral was on May 16 at St. Leo.

*May her soul, through the mercy of God, rest in peace.*

**OFFICE CLOSED:** The St. Leo office will be closed on Monday May 25, 2026, in observance of Memorial Day.

**OFFICE CLOSED:** St. Leo's Parish office will be closed the following dates Thursday June 4 and Friday June 5. The staff will be attending the Synod Ministry days in Winona Rochester.

**FIRST COMMUNION BANNERS:** 1st Communion Banners, which can be found in the concourse, can be taken home.

**CHURCH DIRECTORY:** If you haven't scheduled your time for pictures for the directory, there is still time. You can schedule your appointment online just go to [www.ucdir.com](http://www.ucdir.com)

**Church code is: mn632, Password: membermn632.** If you have any additional questions, please contact the following parishioners: Kim Van Hoecke - 507-820-9450, Deb Hagedorn - 319-360-9568, Laurie Bucher - 507-350-9038

**PIPESTONE COMMUNITY BLOOD PROGRAM LEADER NEEDED (VOLUNTEER/VOLUNTEER GROUP):** What is your role as a blood program leader?

- Help save lives!
- Serve as the connection between your company, organization, school

This is the last week of preschool! We have had a great year. We are so thankful for all your love, prayers, and monetary support that we have gotten from each of you. We could not have this program without it! We continue to have a few openings in each class and would like to have your child join us. Please contact the church office at 507-825-3152 or 507-360-4362. We would love to help get your child registered for preschool! Thank you, *Noah's Ark Preschool*



or community and the Red Cross, while also gaining support from your group's leadership.

- Get people excited about your blood drive and ask them to join your team.
- Develop a communication and social media plan to spread the word about blood donation in person and through the use of Red Cross materials and messaging.
- Develop a recruitment plan to recruit and ask donors to donate at the upcoming event.
- Schedule donor appointments in the Blood Drive Management Portal to meet your sign-up goal.
- Relay important safety measures to donors and blood drive volunteers.

For questions or to inquire about this opportunity please contact:

**Diane Pillar** - [diane.pillar@redcross.org](mailto:diane.pillar@redcross.org)  
(605) 305-2158 cell

**ST. LEO BAPTISM PREPARATION CLASSES:** If you have a child to be baptized here are the dates when classes will begin. Sundays, Sept 6, 13, 20, 27th. 9am-10am.

## ST. LEO CHURCH STEWARDSHIP REPORT

Week 47 - (7/1/25-5/17/26)  
**Weekly Total Income.....\$5,767.00**  
 Needed Weekly ..... \$7,335.00  
 Needed to Date ..... **\$344,745.00**  
 Income to Date ..... **\$332,018.39**

**Thank you for giving of your time, talent & treasure!**

Give online safely and securely via the ParishSOFT Online Giving platform by visiting <https://giving.parishsoft.com/app/giving/stleopipestone> to find the online giving link. You can choose to make a one-time or a recurring donation to the fund of your choice. For giving to the general fund, registered adult members of St.

Leo should choose the Adult fund. For questions please call the St. Leo office. Also use the QR code here.



**St. Leo Weekly Attendance Count**  
 Sunday 10:30 AM Mass: **236**

### TODAY'S READINGS LECTURA DE HOY

Acts 2:1-11 | 1 Cor 12:3b-7, 12-13  
 Jn 20:19-23

### READINGS FOR THE WEEK LECTURAS DE LA SEMANA

**Monday**  
 Acts 1:12-14 | Jn 19:25-34

**Tuesday**  
 1 Pt 1:10-16 | Mk 10:28-31

**Wednesday**  
 1 Pt 1:18-25 | Mk 10:32-45

**Thursday**  
 1 Pt 2:2-5, 9-12 | Mk 10:46-52

**Friday**  
 1 Pt 4:7-13 | Mk 11:11-26

**Saturday**  
 Jude 17, 20b-25 | Mk 11:27-33

They will be offered twice a year and after parents have done it for one child, they do not need to repeat it for additional children. Classes must be completed before the Baptism is scheduled.

## FAITH FORMATION: *St. Catherine & St. Leo Youth News*

**SUMMER PLANNING:** Totus Tuus is coming to St. Catherine and St. Leo! Mark your calendars and plan to join us for a week of fun and faith. St. Leo Totus Tuus will run from June 28 to July 3. St. Catherine Totus Tuus will run from July 12 to July 17. Both weeks students currently in grade 6 and above go in the evenings from 6:30 to 8:15 on Sunday through Thursday and those currently in Kindergarten through 5th grade go Monday through Friday during the day from 9:00 to 2:30. This year our themes are the Commandments and the Luminous Mysteries. The cost of Totus Tuus registration is \$25 per student with a cap of \$75 per family. Registration is available in the Gathering Space at St. Catherine, the Concourse at St. Leo, the parish website or you can stop in the office. **WHAT IS TOTUS TUUS?** Totus Tuus is a Catholic Summer youth program dedicated to sharing the Gospel and promoting the Catholic Faith through catechesis, evangelization, Christian witness, and Eucharistic worship. The goal of Totus Tuus is to help young people grow in the understanding of, and strengthen their faith in Jesus Christ. It is only by establishing a real and personal relationship with him that we can be led to love of the Father in the Spirit and so be made sharers in the life of the Holy Trinity. **IS IT DIFFERENT FROM VACATION BIBLE SCHOOL?** Totus Tuus is similar to the “vacation bible school” model but there are some differences. First, we are provided with a team of young adult missionaries who are extensively trained to deliver content and

### **SUMMER DATES TO NOTE:**

**St. Leo Totus Tuus - June 28 – July 3** (For students currently in grades K – 12. **Registration is open now!**)

**Steubenville – July 10 – 12** (For students currently in grades 8-12. **Limited space still available.**)

**St. Catherine Totus Tuus – July 12 – 17** (For students currently in grades K – 12. **Registration is open now!**)

**Camp Summit – August 3 – 6** (Registration is full.)

engage in relational ministry. The missionaries work with our parish and volunteers to help provide models of faithful discipleship. The curriculum and format for the week has been intentionally designed to place an emphasis on authentically Catholic content, assist parishes in engaging people at every stage of the evangelization process, and create an environment aimed at fostering vocational discernment. **HOW YOU CAN HELP:** If you would like to help with Totus Tuus at either parish here are some areas that we are looking for help:

- Host families/homes for the missionaries (one for men and one for women)
- Parishioners to provide lunch(es) or host a dinner for the missionaries
- Volunteer to be adult helpers for the day sessions (no teaching just logistics and classroom helpers)



**CONGRATULATIONS TO OUR ST. CATHERINE'S SENIORS:** Snapshots from last weekend's St. Catherine Senior Mass/Breakfast.

# ST. CATHERINE'S HAPPENINGS: News & Announcements

**CMA GOAL:** The 2026 CMA Goal for St. Catherine is \$27,274.00

CMA Pledges as of	Donors	Received	Percentage
May 17, 2026	15	\$4,550.00	16.68%

**PARISH INFORMATION:** St. Catherine & St. Leo Co-Pastoral Council Meeting: May 28th 7:00 PM in Doyle Hall

St. Catherine Finance Council Meeting June 3rd at 5:30 PM in St. Catherine Centennial Room

**ST. MARY CEMETERY MASS:** If you are planning to attend the Memorial Day Mass on May 25th please bring your own chair.

**CCW:** Just a reminder we have our May outing on May 27th at 6:00 PM for a meal at Revel. You don't have to be a regular meeting attender to join this fellowship. Please contact Mary O'Toole Hemme at 507-227-2683 if you would like to attend. Thank you!

**DIRECTORY INFORMATION:** Directory photos at St. Catherine are in Doyle Hall (the gym) on June 8th, June 9th, June 10th, and June 22nd. If you have not signed up, please do so immediately.

<https://ucdir.com/>

**Church Code:** mn632

**Member Password:** membermn632

**FINANCIAL STATEMENTS:** There will be no 6-month financial statements. If you are interested in receiving one, please reach out to the Parish Office.

**GOOD WORKS RAFFLE:** And the winner for week 21 is Deb Van Belle. Please stop in the office to pick up your prize.

**SUPPORT OUR PARISH BULLETIN — AND PROMOTE YOUR BUSINESS:** Each week, Quality Printing designs and prints the parish bulletin that keeps our community informed and connected. To help cover printing costs, we sell advertising space

within the bulletin — and we're currently looking for more advertisers! Advertising in the bulletin is a wonderful way to support the church while also promoting your business to parishioners in both Luverne and Pipestone. Your ad will be seen by hundreds of families and serve as a reminder of your commitment to our parish community. To learn more about advertising opportunities, please contact Annie at Quality Printing at 507-283-1716.

**ADORATION CHAPEL:** Thank you to all who are participating in Adoration. We know that our parish and our families are blessed by the exposition of the Blessed Sacrament. Note that our Wednesday hours have been extended to 7:00 PM for those of you who are unable to attend during the work day. Please call Barb at (507) 360-6820 for a specific weekly hour.

**PRAYER PETITIONS FOR THE SICK:** Shawn Kinsinger, Don Lenz, Mike Lenz, Jereme & Suzanne Lenz, Troy Ahrendt, Connie Wieneke, Bob Israel, Terry Gonnerman, Janet Reisch, Pat Demuth, Mitzi Baus-tian, and all the sick and suffering. Heavenly Father, Look with mercy on all who suffer any kind of infirmity, sickness or injury, that they may be comforted.

**MEALS ON WHEELS:** St. Catherine is responsible for delivering Meals on Wheels for the month of May. We need a volunteer(s) to be the point of contact to manage this initiative for the Church. If you would be interested in leading Meals on Wheels for St. Catherine, please reach

## ST. CATHERINE CHURCH STEWARDSHIP REPORT

### Weekly Contributions

**Week 47 - (7/1/25-5/17/26)**  
**Weekly Total Income .....\$3,636.11**  
 Needed Weekly ..... \$8,098.00  
 Needed to Date ..... \$380,606.00  
 Income to Date ..... \$349,403.81

*Please Include St. Mary Cemetery, St. Catherine Church, or St. Catherine Cemetery in your Last Will and Testament. We encourage giving through ParishSOFT - the QR Code for Online Giving through ParishSOFT is below. Call or email Jody Richters 283-8502, [fa@stsc.org](mailto:fa@stsc.org), for more information or to sign up.*

<https://giving.parishsoft.com/App/Form/f6260034-ff6b-4187-a4cf-e7d15dd119fb>



### St. Catherine Weekly Attendance Count

Saturday 5:00 PM Mass: 73  
 Sunday 8:30 AM Mass: 261

### Birthday Greetings!

Katie Walgrave, Angela Nolz, Cece Rock, Jill Willers, Dave Smeins, Claudia Soto, Cecelia Lenz, Makena Nelson, Troy Ahrendt, Maddux Domagala, Ellisyn Van Batavia, Rick Buysse, Aubrey Van Belle, Egypt Forrest, Lisa Hoff, Laurin Carroll, Karen Fey, and Bill Korth

### Anniversaries!

Vance & Becky Walgrave, Jerry & Delaine Jensen, Brian & Kim Arends, Todd & Chelsea Van Belle, Bob & Natalie Golden



out to the office by email [pas@stsc.org](mailto:pas@stsc.org) or phone 507-283-8502. We still need 2 volunteers for May 28th



*Blessed are the peacemakers. To be a peacemaker is no easy matter: it forces us out of our comfort zones of distraction and indifference, and may well be resisted by those who have an interest in perpetuating conflicts.” - Pope Leo XIV*

# St. Catherine Catholic Church

## ST. CATHERINE CHURCH

Phone: 507-283-8502

Web: www.stscl.org

Office Hours: T-F 9:00-3:00

### PASTOR:

Fr. Joshua Miller, 507-283-3663

### DEACON:

Dcn. Kevin Aaker

### FINANCIAL ADMINISTRATOR:

Jody Richters, 507-283-8502

### SECRETARY:

Brandi Van Santen, 507-283-8502

### FAITH FORMATION DIRECTOR:

Nicole Henrichs, 507-283-8071

### FAITH FORMATION ASSISTANT:

Lynn Richters, 507-283-8502

### CEMETERY:

SC: Mark Walgrave, 507-283-8845

SM: Deb Boltjes

### PRAYER CHAIN:

Judy Reese, 507-215-7816

Mary Rabinowitz, 507-360-5659

### MAINTENANCE/ CUSTODIAL:

Bruce Henrichs, 507-283-8502

### MUSIC:

Susan Skattum

### WOMEN'S COUNCIL:

Mary O'Toole Hemme

### KNIGHTS OF COLUMBUS:

Darrell Hemme, 507-220-5427

### O.C.I.A.:

Father Joshua Miller

Kevin & Mary Aaker

### MINISTRY OF CARE:

Pam Haakenson, 507-283-9450

### PASTORAL COUNCIL:

Katie Baustian, 507-227-3531

### FINANCE COUNCIL:

Patti Wieneke

### DIOCESAN WEBSITE:

www.dowr.org

 <p><b>Blue Mound</b> HAIR SALON</p> <p><b>LORI STOFFEL</b> (507) 283-9458 • 508 E. Brown St., Luverne, MN</p>	 <p><b>Farm &amp; Home Agency, Inc.</b> Jeffrey Manderscheid - Lic. #724182 224 S. Hiawatha, Pipestone, MN 507-825-2435 • jeff@farmhomeagcy.com</p>	  <p>507-283-8711 Tow: 507-227-7458 Shop: 507-283-8146 Kevin Aaker • Mike Haggren • Andrew Hemme</p>
<p><b>SPACE AVAILABLE</b> CONTACT QUALITY PRINTING TO ADVVERTISE YOUR BUSINESS HERE! <b>507.283.1716</b></p>	 <p><b>Daily &amp; Nightly Specials</b> <b>449-0454</b> OPEN Monday - Saturday</p>	 <p><b>DINGMANN</b> Funeral Home &amp; Cremation Services "A local, family owned funeral home for over five generations" Luverne, MN • 283-4567 www.dingmannandsons.com</p>
 <p><b>PIPESTONE</b> Helping Farmers Sponsored on behalf of Dakota Superior Sow Farm www.pipestone.com</p>	 <p><b>McClure</b> PLUMBING, HEATING, AIR CONDITIONING, INC. 412 S Kniss Ave. • Luverne, MN 56156 (507) 449-2828</p>	<p><b>Heartland Mutual</b> Insurance Company Lismore, Luverne, Odessa &amp; Hutchinson www.hmicmn.com</p>
 <p><b>HARTQUIST</b> Funeral &amp; Cremation Services Serving families with <i>integrity, grace,</i> and <i>compassion</i> LUVERNE CHAPEL 507-283-2777 PIPESTONE CHAPEL 507-825-5411</p>	<p><b>SPACE AVAILABLE</b> CONTACT QUALITY PRINTING TO ADVVERTISE YOUR BUSINESS HERE! <b>507.283.1716</b></p> <p><b>First Farmers &amp; Merchants</b> 107 EAST MAIN ST   PIPESTONE   507.825.3301 303 EAST MAIN ST   LUVERNE   507.283.4463 We believe in you. Member FDIC. And the community.</p>	<p><b>Heartland Mutual</b> Insurance Company Lismore, Luverne, Odessa &amp; Hutchinson www.hmicmn.com "Serving our Policyholders for over 140 years" Specializing in Farm &amp; Home Insurance Phone: 844-HMIC INS (464-2467)</p>
 <p><b>Pizza Ranch</b> 110 E MAIN • LUVERNE, MN <b>507-283-2379</b></p>	 <p><b>Pat and Kim Von Tersch</b> (507) 449-2030 www.professionalagmarketing.com</p>	<p><b>SPACE AVAILABLE</b> CONTACT QUALITY PRINTING TO ADVVERTISE YOUR BUSINESS HERE! <b>507.283.1716</b></p>
<p>June 25, 26, 27, &amp; 28, 2026 Occasional Sales Antiques, Gifts and Home Decor 302 S. Broadway Ellsworth, MN Follow us &amp; LIKE us on Facebook for updated info</p>  <p><b>The Painter's Wife</b> VINTAGE, UNCYCLED, &amp; NEW WHOLE THE PAST, PARTS THE PERFECT PRESENT</p>	 <p><b>Sunshine Foods</b> 205 E Warren St • Luverne Mon-Sat • 6am-9pm   Sun • 7am-9pm</p>	 <p><b>Jorgensen Financial Services</b> Marjean Ossefoort ~ Alex Ossefoort ~ George Jorgensen 245 North Tyler St., Tyler, MN 56178 • 717 6th St. SE, Pipestone, MN 507-247-5588 or 800-588-5421 • www.jorgensenfinancial.net</p>
 <p>"We Want and Appreciate Your Business!" <b>Quality</b> PRINTING, INC. PAPER, SIGNS &amp; PROMOTIONAL ITEMS 401 W. Hatting St., Luverne <b>507-283-1716</b> www.qualityprinting-luverne.com</p>	<p><b>Los Tulipanes</b> MEXICAN RESTAURANT 607 8th Ave NE • Pipestone 507-825-9959 Sun-Thurs 11am-9pm • Fri-Sat 11am-10pm</p> <p><b>SPACE AVAILABLE</b> CONTACT QUALITY PRINTING TO ADVVERTISE YOUR BUSINESS HERE! <b>507.283.1716</b></p>	<p><b>Those Blasted Things</b> 924 S. Kniss Ave Luverne, MN 56156 (507) 283-4027 THOSE BLASTED THINGS <b>Luverne Monuments</b> Vance and Becky Walgrave</p>

Please consider supporting these sponsors to thank them for their support!

For advertising call Quality Printing 507-283-1716

# St. Leo Catholic Church

## ST. LEO CHURCH

415 S. Hiawatha Ave  
PO Box 36  
Pipestone, MN 56164

Phone: 507-825-3152  
Web: www.stscl.org  
Office Hours: M-F 8:00-3:00

### PASTOR:

Fr. Joshua Miller, 507-283-3663

### DEACON:

Dcn. Kevin Aaker

### FINANCE ADMINISTRATOR:

Jody Richters, 507-283-8502

### PARISH SECRETARY:

Sonia Smith, 507-825-3152

### FAITH FORMATION DIRECTOR:

Nicole Henrichs, 507-283-8071

### FAITH FORMATION ASSISTANT:

Holly Baatz

### CUSTODIAN:

Shane Bieber, 507-285-3152

### NOAH'S ARK PRESCHOOL:

Amy VandenBosch, 507-825-3152  
Katie Einck

### OCIA:

Father Joshua Miller  
Kevin & Mary Aaker

### ST. LEO PARISH PASTORAL

#### COUNCIL CHAIRMAN:

Lyle Gillen

### PARISH FINANCE COUNCIL

#### TRUSTEES:

Ryan Ridl & Lonnie Swenson

### KNIGHTS OF COLUMBUS:

David Dimond

### CATHOLIC DAUGHTERS OF

#### THE AMERICAS:

Elaine Fenicle

### SOCIAL JUSTICE COMMITTEE:

Linda Halbur

### DIOCESAN WEBSITE:

www.dowr.org

**Blue Mound**  
HAIR SALON

LORI STOFFEL  
(507) 283-9458 • 508 E. Brown St., Luverne, MN

**Pizza Ranch**

108 W. MAIN ST. - PIPESTONE  
507-562-2222

**Luverne BODY SHOP AUTO GLASS**

507-283-8711

**G&S Auto**

Tow: 507-227-7458  
Shop: 507-283-8146

Kevin Aaker • Mike Haggan • Andrew Hemme

**SPACE AVAILABLE**  
CONTACT QUALITY PRINTING TO  
ADVVERTISE YOUR BUSINESS HERE!  
507.283.1716

**Apples & More on 74**

852 74th Avenue  
Beaver Creek, MN

**COUNTRY CUPBOARDS**

843 US Hwy 75  
LUVERNE, MINNESOTA 56156  
507-283-8176

WHERE EXPERIENCED  
CRAFTSMEN PRODUCE  
WORK WITH PRIDE

PIPESTONE  
**Massage & WELLNESS**

Lucy and Ruston Aaker  
Located on Main Street  
in Pipestone  
507-690-2560

www.pipestonemassageandwellness.com

**COREFIT**

Keep Moving Forward — with *Courtesy*

A virtual fitness program you can  
access anywhere, anytime.

www.corefitwithcourtney.com

**HARTQUIST**  
Funeral & Cremation Services

Serving families  
with *integrity, grace,*  
and *compassion*

LUVERNE CHAPEL 507-283-2777  
PIPESTONE CHAPEL 507-825-5411

**Nutrien**  
Ag Solutions™

LUVERNE 507-449-7679  
PIPESTONE 507-825-2008

**Godfather's Pizza**

FOOD AVAILABLE 7 DAYS A WEEK  
507-449-0335  
818 N KNISS AVE, LUVERNE

**Heartland Mutual**  
Insurance Company

Lismore,  
Luverne, Odessa  
& Hutchinson

www.hmicmn.com

"Serving our Policyholders for over 140 years"

Specializing in Farm & Home Insurance  
Phone: 844-HMIC INS (464-2467)

Jenniges Tiling LLC  
1122 316th Street  
Ellsworth, MN 56129

Tom Jenniges 507-227-8457  
Travis Jenniges 507-227-3808  
4", 6", 8", & 10" sizes on hand  
Automatic grade control with IntelliSlope  
RTK GPS controlled

**THE BULL PEN**

1202 SOUTH  
KNISS AVE,  
LUVERNE, MN

**SPACE AVAILABLE**  
CONTACT QUALITY PRINTING TO  
ADVVERTISE YOUR BUSINESS HERE!  
507.283.1716

**KEMP ELECTRIC**

Industrial • Commercial • Agricultural • Residential

Justin Kemp | PO Box 803 Luverne, MN | 507-920-6961

**Sunday Buffet**  
10AM - 1:30PM

MONDAY - CLOSED • TUESDAY 4PM-10PM  
WEDNESDAY - THURSDAY 11AM-10PM  
FRIDAY 11AM-11PM • SATURDAY 11AM-11PM  
SUNDAY 11AM-9PM

SINCE 1972 WE KNOW FOOD

**Hank's FOODS**

HWY 30 WEST, PIPESTONE | Phone: 507-825-3652  
www.hanksfoods.com

"We Want and Appreciate Your Business!"

**Quality PRINTING INC.**

PAPER, SIGNS & PROMOTIONAL ITEMS

401 W. Hatting St., Luverne  
507-283-1716

www.qualityprinting-luverne.com

**NORWEGIAN**  
MUTUAL INSURANCE CO.

Reliability. Accountability. Trust.

www.norwegianmutual.com  
507-423-5601

**SPACE AVAILABLE**  
CONTACT QUALITY PRINTING TO  
ADVVERTISE YOUR BUSINESS HERE!  
507.283.1716

**Those Blasted Things**

924 S. Kniss Ave  
Luverne, MN 56156  
(507)283-4027

THOSE BLASTED THINGS

Luverne  
**Monuments**  
Vance and Becky  
Walgrave

Please consider supporting these sponsors to thank them for their support!

For advertising call Quality Printing 507-283-1716