



APRIL 2026

Durable. Stylish. Sustainable.
Wood Plastic Composite Solutions You Can Trust

Creating Harmony Between Home and Nature – Sustainable Living for a Greener Future.

Wood plastic composite (WPC) products (a new type of energy-saving material replacing traditional wood) are gradually evolving into an emerging industry. With the global emphasis on environmental sustainability, WPC materials offer significant advantages in terms of environmental protection and renewability. They align with the broader trend of sustainable development and underscore their growing potential for future growth.



Advantages:

- **Natural Aesthetics:** Features a beautiful and elegant natural wood grain texture with a pleasant touch, providing a high-end look.
- **Ease of Installation:** Can be easily shaved, nailed, drilled, painted, and cut to fit various accessories.
- **Durability:** Resistant to mould, rotting, and splitting, ensuring long-lasting performance.
- **Low Maintenance:** Requires no painting or glue, significantly reducing upkeep.
- **Safety:** Anti-slip surface, fewer cracks and warps, making it barefoot-friendly.
- **Weather Resistance:** Performs exceptionally well in temperatures ranging from -40°C to +60°C.
- **UV and Fade Resistance:** Maintains its appearance and durability under prolonged exposure to sunlight.
- **Dimensional Stability:** Resistant to moisture and temperature fluctuations, ensuring consistent performance.
- **Eco-Friendly:** Fully recyclable, environmentally friendly, and free of hazardous chemicals.

All mouldings and colours can be customised, subject to order quantity.

Our WPC Product Features

WPC combines the best qualities of both wood and polymer materials while eliminating their drawbacks, making it an excellent substitute for traditional timber.

Catalogue

01

Textured Grip Decking

02

Decking Accessories

03

Interlocking Decking

04

Contact | Specification | Prices



About Us

Our manufacturing partner is a leader in the quality and technology of wood plastic composite (WPC) materials in China. As a national high-tech enterprise, we specialise in the production and development of innovative WPC materials.

Durable materials ensuring long-lasting beauty.

Aesthetic appeal unmatched in the decking industry.

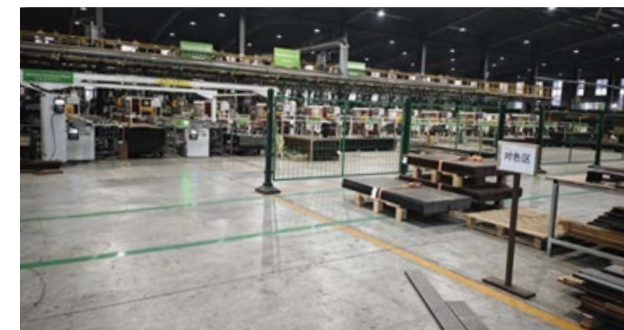
Nature-friendly, crafted with sustainability in mind.

Design flexibility with our reversible decking options.

Easy installation for both professionals and DIY enthusiasts.

Keeping ahead with innovative solutions for all outdoor spaces.

DANDEK - Representing the pinnacle of composite decking excellence.





Eco-friendly



Low maintenance



Waterproof



Anti-UV



Textured Grip Decking

Stunning Patterns for a Natural Look & Feel

Textured Grip Decking

Size: 140 x 23mm
 Solid, full strength
 UFD-140H23S-1

4.1kg/meter, Anti-slip grain on both sides, optional reverse colour, length can be

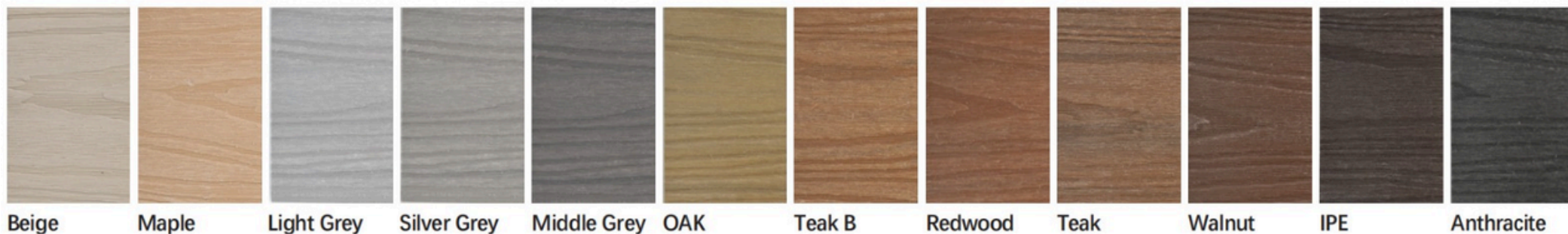
- 2.4m, 3.6m, 4.0m, 4.8m, 6.0m
- Custom to your requirements

Size:140x23mm
 6 Round Holes, better integrity over others
 UFD-140H23CO-1

3.0kg/meter, Anti-slip grain on both sides, optional reverse colour, length can be

- 2.4m, 3.6m, 4.0m, 4.8m, 6.0m
- Custom to your requirements

Optional Colours



Surface Style



T

£ 6.50 /mtr

R

£ 9.16 /mtr



T

£ 5.10 /mtr

R

£ 8.00 /mtr



Mountain Pattern

Nature-Inspired Next Generation WPC Decking

Exceptional Quality for Enduring Beauty and Performance

**20 years function for residential use
10 years function for commercial use**



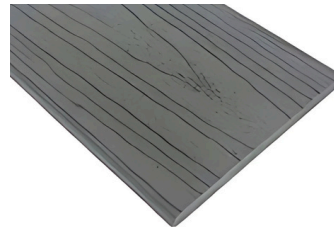
UFD-140H23S-1 solid decking 0.7mm thickness capping HDPE wrapped completely around the board. Can be reversible

Size (mm): 140x23
Width (mm): 140
Thickness (mm): 23
Weight (kg/m): 4.10



UFD-140H23CO-1 circular hole decking 0.7mm thickness capping HDPE wrapped completely around the board. Can be reversible

Size (mm): 140x23
Width (mm): 140
Thickness (mm): 23
Weight (kg/m): 3.00



140H10 fascia boards

Size (mm): 140x10
Width (mm): 140
Thickness (mm): 10
Weight (kg/m): 1.81



UF-140H23 bullnose board

Size (mm): 140x23
Width (mm): 140
Thickness (mm): 23
Weight (kg/m): 3.98



- T £ 3.55 /mtr
- R £ 6.66 /mtr
- T £ 6.25 /mtr
- R £ 8.75 /mtr

Decking

Accessories



Eco-friendly



Low maintenance



Waterproof

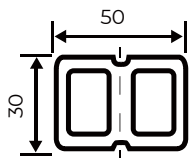
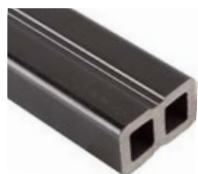


Anti-UV

Accessories For Installation

Accessories for WPC Decking & Cladding

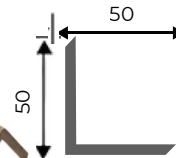
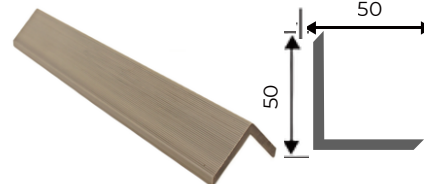
Reinforced Joist-UF 50H30



T £ 2.08 /mtr

R £ 2.92 /mtr

Corner Edging Trim UF-50H50CO



T £ 2.00 /mtr

R £ 3.00 /mtr

Starter clip (sets of 25)



T £ 5.00

R £ 10.00

Spacer clip (sets of 25) 1 - 3mm gap



T £ 5.00

R £ 10.00

Plastic clip (Sets of 25) 6-7mm gap



T £ 3.00

R £ 6.00

Plastic Pedestals



UF-DPAO
24mm x 35mm Height Range

T £ 3.00

R £ 5.00



UF-DPAO-A
31mm x 45mm Height Range

T £ 3.20

R £ 5.40



UF-DPAO-B
44mm x 70mm Height Range

T £ 3.40

R £ 5.80



UF-DPAO-C
65mm x 92mm Height Range

T £ 3.60

R £ 6.00



UF-DPAO-D
85mm x 135mm Height Range

T £ 3.80

R £ 6.20



UF-DPAO-E
135mm x 180mm Height Range

T 4.00

R £ 6.40

Accessories for WPC Decking & Cladding

1



2



3



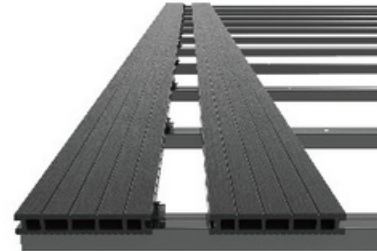
4



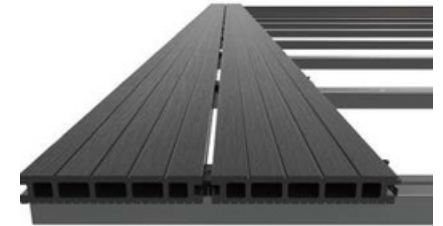
5



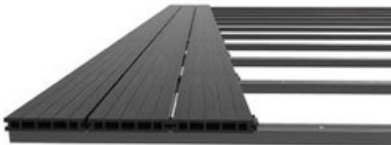
6



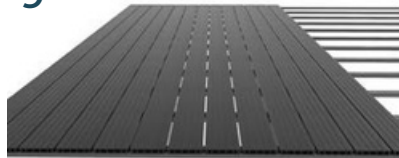
7



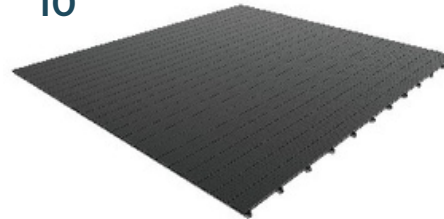
8



9



10



11



Interlocking Decking



Eco-friendly



Low maintenance

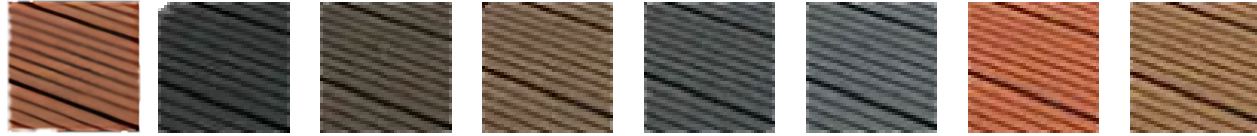


Waterproof



Anti-UV

Interlocking Decking Tiles



Cedar

Charcoal

Chocolate

Coffee

Grey

Light Grey

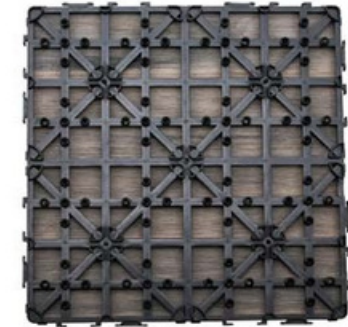
Redwood

Wood

DT300STS – Square Decking Tiles

Easy to install, easy to clean with good anti-slip properties, and a variety of colors to choose from. Eco-friendly, made using 100% recycled materials. Low-maintenance – no need to sand, varnish or stain the decking tiles.

Size:300x300x23mm,
Weight:1.16KG/PC,
0.09M²/PC



T

£ 3.00

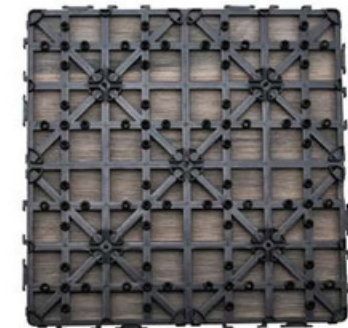
R

£ 4.00

DT300STM – Square Decking Tiles

Easy to install, easy to clean with good anti-slip properties, and a variety of colors to choose from. Eco-friendly, made using 100% recycled materials. Low-maintenance – no need to sand, varnish or stain the decking tiles.

Size:300x300x23mm,
Weight:1.16KG/PC,
0.09M²/PC



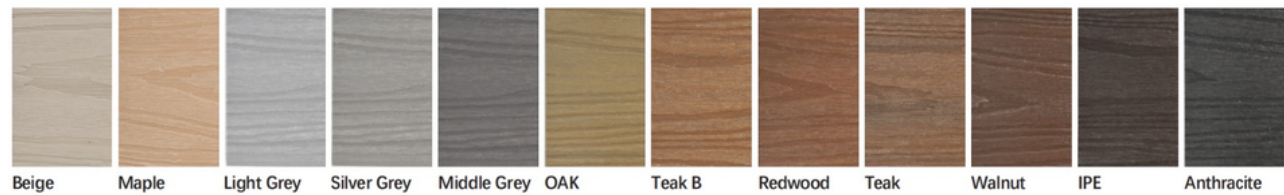
T

£ 3.00

R

£ 4.00

Co-Extruded Decking



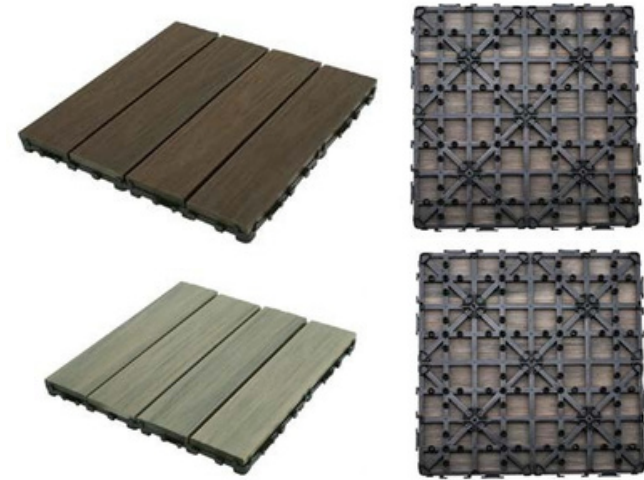
CO300M – Square Decking Tiles

Capped composite deck tiles treated with co-extrusion technology are more resistant to wear and tear. Attractive 3d embossed woodgrain surface for a really stand-out natural look. Low-maintenance – no need to sand, varnish, or stain the Decking Tiles.

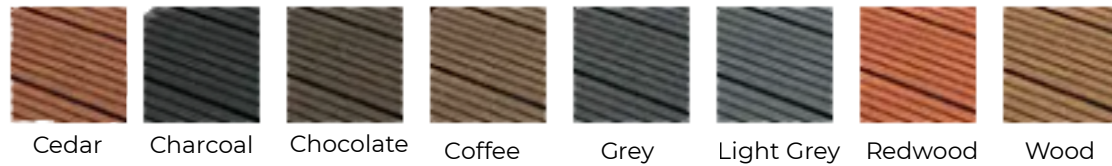
Size:300x300x23mm,
Weight:1.16KG/PC,
0.09M 2/PC

T £ 3.50

R £ 5.00



Interlocking Decking



DT600R – Solid Rectangular Deck Tiles – Wood

Easy to install, easy to clean with good anti-slip properties, and a variety of colors to choose from. Eco-friendly, made using 100% recycled materials. Low-maintenance – no need to sand, varnish or stain the decking tiles.

Size:300x600x23mm,
Weight:2.80KG/PC,
0.18M 2/PC

T £ 5.00

R £ 10.00



Wall Cladding Range



Eco-friendly



Low maintenance



Waterproof



Anti-UV

Wall Cladding Range



UF-C156C21WP Traditional quality, 3D Emboss

Size (mm): 156x21
Width (mm): 156
Thickness (mm): 21
Weight (kg/m): 1.75



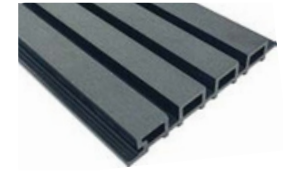
UF-C174C20.4WP Traditional quality

Size (mm): 174x20.4
Width (mm): 174
Thickness (mm): 20.4
Weight (kg/m): 1.82



UF-C172C14.2 Traditional quality, sanding no pattern

Size (mm): 172x14.2
Width (mm): 172
Thickness (mm): 14.2
Weight (kg/m): 1.93



UFW-219S26 Traditional quality

Size (mm): 219x26
Width (mm): 219
Thickness (mm): 26
Weight (kg/m): 2.95

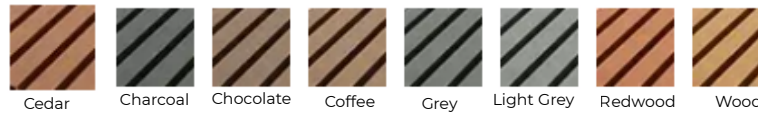
T £ 2.50 **R** £ 5.00

T £ 2.50 **R** £ 5.00

T £ 2.50 **R** £ 5.00

T £ 4.50 **R** £ 7.50

WPC Wall Cladding Board



UFW-CO219S26 NG co-extruded material wall cladding

Size (mm): 219x26
Width (mm): 219
Thickness (mm): 26
Weight (kg/m): 2.85



UFW-CO219S26 NG co-extruded material wall cladding

Size (mm): 219x26
Width (mm): 219
Thickness (mm): 26
Weight (kg/m): 3.15



UFW-CO142S12WP NG co-extruded material wall cladding

Size (mm): 142x12
Width (mm): 142
Thickness (mm): 12
Weight (kg/m): 2.2

T £ 4.50

R £ 7.50

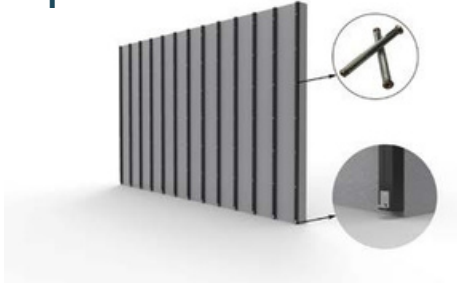
T £ 3.30

R £ 5.00

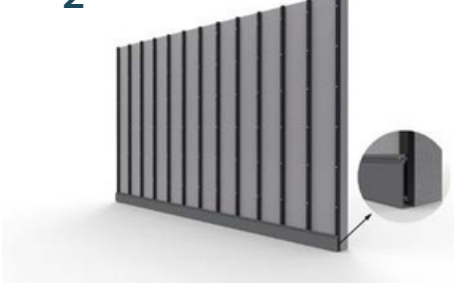


Wall Cladding Installation

1



2



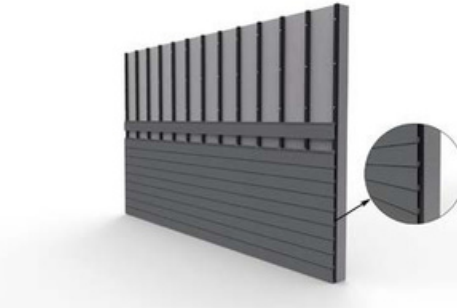
3



4



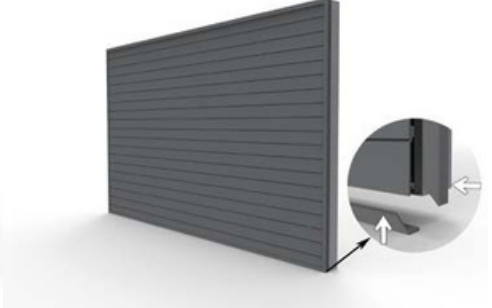
5



6



7



8



Fence Range



Eco-friendly



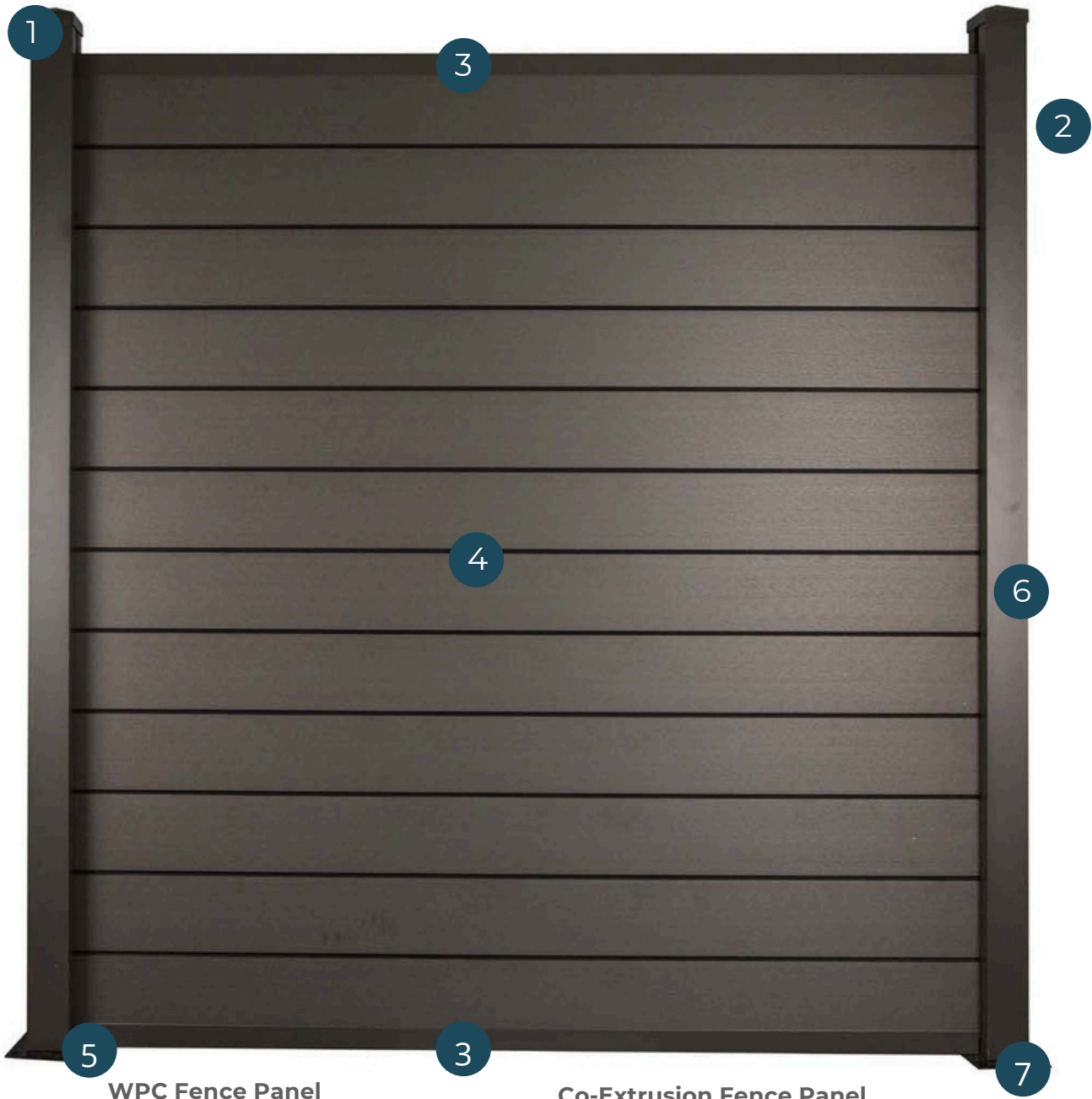
Low maintenance



Waterproof



Anti-UV



WPC Fence Panel

Co-Extrusion Fence Panel

T £ 102.00

R £ 170.00

T £ 112.00

R £ 180.00

- 1

Post Cap
- 2

Post Infill
- 3

Rail
- 4

WPC or
Co-Extrusion
Board
- 5

Bracket For Rail
- 6

80*80mm Post
- 7




Metal Base

Our Promise: Durable, Stylish, & Sustainable Fencing You Can Trust

Product	Privacy Fence Type 4
Size (W*H)	90 x 180 cm; 180 x 180 cm
Colour	Anthracite, Brown, Grey or Customised
Material	WPC
Material Frame	Aluminum
Surface Treatment	Sanding

WPC Fence Panel 180 x 180 cm

T £ 102.00 R £ 170.00

WPC Fence Panel 90 x 180 cm

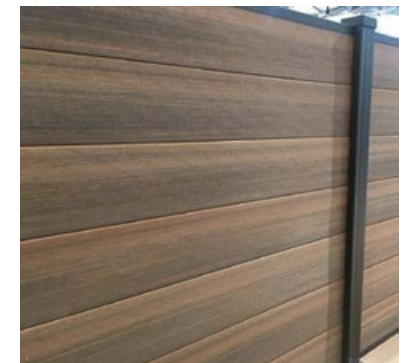
T £ 78.00 R £ 107.00

Co-Extrusion Fence Panel 180 x 180cm

T £ 112.00 R £ 170.00

Co-Extrusion Fence Panel 90 x 180cm

T £ 85.00 R £ 117.00



Fence Range

Product	Privacy Fence Type 1
Size (W*H)	180 x 180 cm;
Colour	Anthracite, Brown, Grey or Customised
Material	WPC
Material Crossbar	WPC
Surface Treatment	Brushing

WPC Fence Panel 180 x 180 cm

T

£ 102.00

R

£ 170.00



Product	Privacy Fence Type 2
Size (W*H)	90 x 180 cm; 180 x 180 cm
Colour	Anthracite, Brown, Grey or Customised
Material	WPC
Material Crossbar	Aluminum
Surface Treatment	Brushing

WPC Fence Panel 180 x 180 cm

T

£ 102.00

R

£ 170.00

WPC Fence Panel 90 x 180 cm

T

£ 78.00

R

£ 107.00



Fence Range

Product	Privacy Fence Type 3
Size	90 x 180 cm; 180 x 180 cm
Colour	Anthracite, Brown, Grey or Customised
Material	WPC
Material Crossbar	Aluminum
Surface Treatment	3D/Embossed Wood Grain

WPC Fence Panel 180 x 180 cm

WPC Fence Panel 90 x 180 cm

T

£ 112.00

R

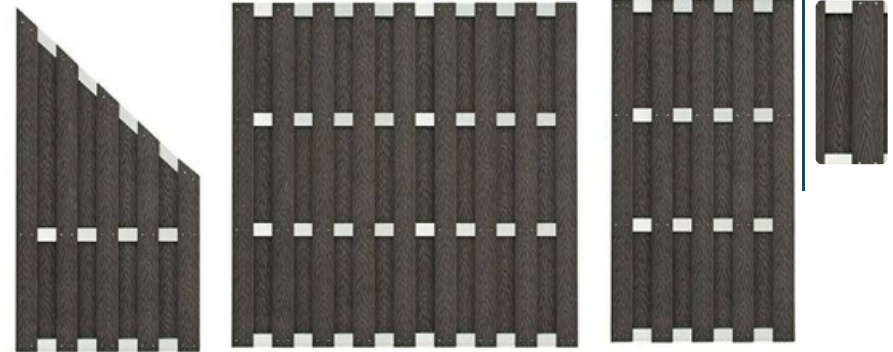
£ 180.00

T

£ 88.00

R

£ 117.00



Product	Privacy Fence Type 4
Size (W*H)	90 x 180 cm; 180 x 180 cm
Colour	Anthracite, Brown, Grey or Customised
Material	WPC
Material Frame	Aluminum
Surface Treatment	Sanding

WPC Fence Panel 180 x 180 cm

WPC Fence Panel 90 x 180 cm

T

£ 102.00

R

£ 170.00

T

£ 78.00

R

£ 107.00



Other Fences

Product	Stack Fence One
Size (W*H)	180 x 180 cm; Traditional Panel
Colour	Anthracite, Brown, Grey or Customised
Material	WPC
Post & Panel Capping	Aluminum
Surface Treatment	Sanding

WPC Fence Panel 180 x 180 cm

T

£ 112.00

R

£ 180.00



Product	Stack Fence Two
Size (W*H)	180 x 180 cm, or Customised
Colour	Traditional Panel Choice or Customised
Material	WPC
Post & Panel Capping	Aluminum
Surface Treatment	3D/Embossed Wood Grain

WPC Fence Panel 180 x 180 cm

T

£ 127.00

R

£ 199.00



Other Fences

Product	Stack Fence Three
Size (W*H)	180 x 180 cm, or Customised
Colour	Traditional Panel Choice or Customised
Material	WPC
Post & Panel Capping	Aluminum
Surface Treatment	Sanding/Wood Grain

WPC Fence Panel 180 x 180 cm

T

£ 110.00

R

£ 175.00



Product	Stack Fence Four
Size (W*H)	180 x 180 cm, or Customised
Colour	Traditional Panel Choice or Customised
Material	WPC
Post & Panel Capping	WPC
Surface Treatment	Sanding/Wood, Grain/3D, Embossed Wood Grain

WPC Fence Panel 180 x 180 cm

T

£ 100.00

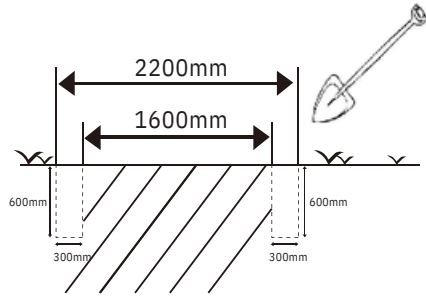
R

£ 165.00

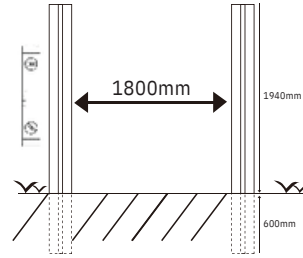


Post Installation In Ground Applications

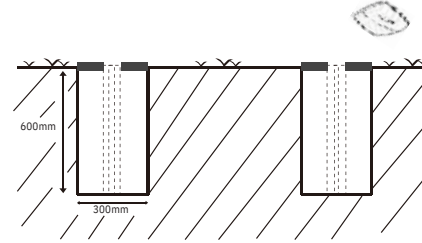
Step 1



Step 2



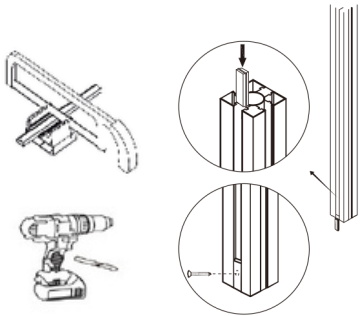
Step 3



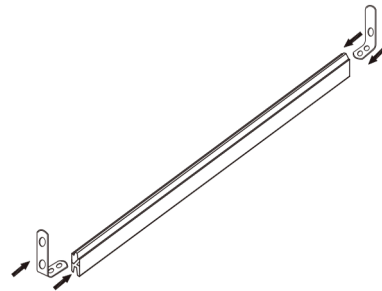
Step 4



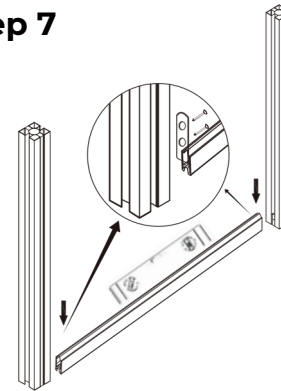
Step 5



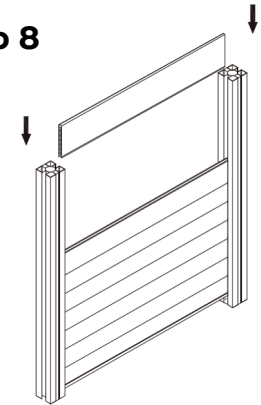
Step 6



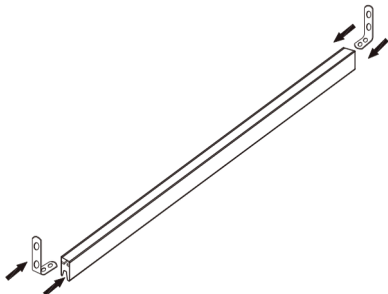
Step 7



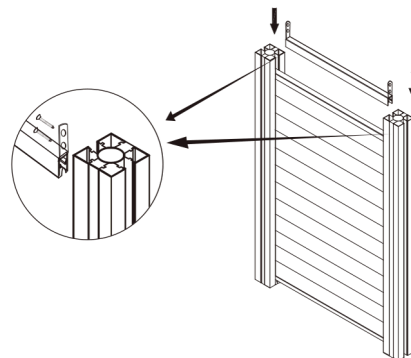
Step 8



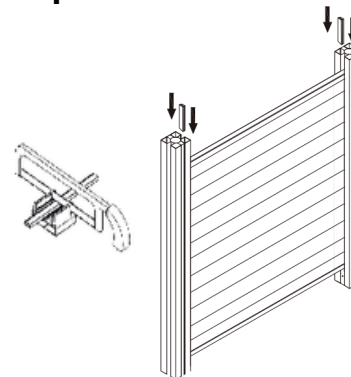
Step 9



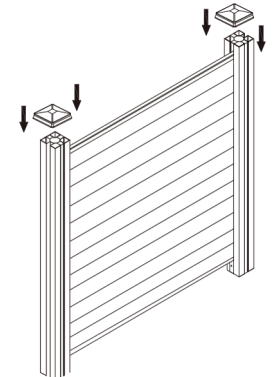
Step 10



Step 11



Step 12



Fence Doors



WPC Fence Door 180 x 90 cm
• 9 x panels (not shown)

T £135.00 R £185.00



WPC Fence Door 1792 x 1095 mm
• 11 x panels - Co Extrusion

T £142.50 R £215.00

Standard Color Choice



Black



Dark Grey



Middle Grey



Light Grey



Dark Oak



Chocolate



Brownish Red



Original Wood



Beige Colour

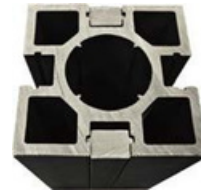
Other Accessories



90*90mm Post

T £13.65 / mtr

R £19.99 / mtr



100x100mm
co-extruded post

T £13.65 / mtr

R £19.99 / mtr



PVC Insert Strip For
Concrete Post

T £4.50 / mtr

R £7.50 / mtr



Creating Harmony Between Home and Nature, Sustainable Living for a Greener Future.



DAN DEK WEBSITE

E-mail: info@dandek.com

Contact: 0208 7980360

Address: Unit 5 Westwick Park, Broombank Road, Chesterfield, S41 9QJ

www.dandek.com



Notes



Trade Decking Prices

Pricing and Order Terms

Please note that all prices are subject to fluctuation and may change without prior notice. However, we are happy to negotiate further discounts for bulk orders.

- **The minimum order quantity (MOQ) for a single colour is 200m² or 1,400 Linear Metres.**
- **For orders combining 2-3 colours, these can be consolidated into a single container.**

If the MOQ is met for one colour only, an additional 5% surcharge will apply.

For any questions or to discuss customised pricing, please don't hesitate to contact us.

Tailored to Your Project – Pricing with Precision

At Dan Dek Decking, we create each order to suit your individual needs. For example, with our fencing options, we've listed the panel price and posts separately. When you place an order, we'll automatically allocate the correct quantity of posts – including starter and end posts – to ensure you have everything you need. The unit quantities and prices will be adjusted accordingly.

We also regularly offer special discounts and **group rates**. That's why we recommend getting in touch to discuss your specific requirements and any longer-term plans. This way, we can offer you a dedicated, tailored price that suits your project perfectly.



Description	Code	Size/s	Unit	Colour/s	Trade Price (exc)	Retail Price (exc)	MOQ	20' Container Qty	Page
Textured Grip Decking. Solid (Mountain Pattern)	UFD-140H23S-1	140mm x 23mm, Solid 2.4, 3.6, 4.0, 4.8, 6 Mtr Custom, 4.1kg / metre	Per Metre	Beige, Maple, Light Grey, Silver Grey, Middle Grey, Oak, Teak B, Redwood, Teak, Walnut, IPE, Anthracite	£ 6.50 / mtr	£ 9.16/ mtr	1,400 Linear Metres, 2 - 3 Colours per container	6,800 Linear Metres due to weight limitation	7 & 8
6 Round Hole Decking (Mountain Pattern)	UFD-140H23CO-1	140mm x 23mm, Solid 2.4, 3.6, 4.0, 4.8, 6 Mtr Custom, 3.0kg/ metre	Per Metre	Beige, Maple, Light Grey, Silver Grey, Middle Grey, Oak, Teak B, Redwood, Teak, Walnut, IPE, Anthracite	£ 5.10/ mtr	£ 8.00 /mtr	1,400 Linear Metres, 2 - 3 Colours per container	9,300 Linear Metres	7 & 8
Fascia Boards	140H10	140mm x 23mm, Solid 2.4, 3.6, 4.0, 4.8, 6 Mtr	Per Metre	Beige, Maple, Light Grey, Silver Grey, Middle Grey, Oak, Teak B, Redwood, Teak, Walnut, IPE, Anthracite	£ 3.55 / mtr	£ 6.66 / mtr	1,400 Linear Metres, 2 - 3 Colours per container	15,400 Linear Metres	8
Bullnose Boards	UF-140H23	140mm x 23mm, Solid 2.4, 3.6, 4.0, 4.8, 6 Mtr	Per Metre	Beige, Maple, Light Grey, Silver Grey, Middle Grey, Oak, Teak B, Redwood, Teak, Walnut, IPE, Anthracite	£ 6.25 / mtr	£ 8.75 / mtr	1,400 Linear Metres, 2 - 3 Colours per container	10,280 Linear Metres	8
Corner Edging Trim	UF-50H50CO	50mm x 50mm	Per Metre	Beige, Maple, Light Grey, Silver Grey, Middle Grey, Oak, Teak B, Redwood, Teak, Walnut, IPE, Anthracite	£ 2.00 / mtr	£ 3.00 / mtr	Normally 1m2 decking needs 1m this accessory		8
Reinforced Joist	UF- 50H30	50mm x 30mm	Per Metre		£ 2.08 / mtr	£ 2.92 / mtr	Normally 1m2 decking needs 3m this accessory		8
Starter Clip Set (sets of 25) 1 - 3mm gap	SC-25	M4 * 30 cross '+' Screw	Per Set	304 Material	£ 5.00 / Set of 25	£ 10.00 / Set of 25	1m2 decking needs 2pcs this accessory		8
Stainless Steel Clip Set (sets of 25) 6 - 7mm gap	SSC-25	6 - 7mm gap	Per Set	304 Material	£ 5.00 / Set of 25	£ 10.00 / Set of 25	1m2 decking needs 22pcs this accessory		8
Plastic Clip Sets 6 - 7mm gap	PCS-25	6 - 7mm gap	Per Set		£ 3.00 / Set of 25	£ 6.00 / set of 25	1m2 decking needs 22pcs this accessory		8
Plastic Pedastal (Joist Cradle) 24mm x 35mm Height Range	UF-DPAO	40mm/50mm/60mm/80mm Joist Cradle	Each		£ 3.00 / Each	£ 5.00 Each		17000	8
Plastic Pedastal (Joist Cradle) 31mm x 45mm Height Range	UF-DPAO-A	40mm/50mm/60mm/80mm Joist Cradle	Each		£ 3.20 / Each	£ 5.40 Each		16000	8
Plastic Pedastal (Joist Cradle) 44mm x 70mm Height Range	UF-DPAO-B	40mm/50mm/60mm/80mm Joist Cradle	Each		£ 3.40 / Each	£ 5.80 Each		13000	8
Plastic Pedastal (Joist Cradle) 65mm x 92mm Height Range	UF-DPAO-C	40mm/50mm/60mm/80mm Joist Cradle	Each		£ 3.60 / Each	£ 6.00 / Each		9500	8

Description	Code	Size/s	Unit	Colour/s	Trade Price (exc)	Retail Price (exc)	MOQ	20' Container Qty	Page
Plastic Pedestal (Joist Cradle) 85mm x 135mm Height Range	UF-DPAO-D	40mm/50mm/60mm/80mm Joist Cradle	Each		£ 3.80 / Each	£ 6.20 / Each		6000	8
Plastic Pedestal (Joist Cradle) 135mm x 180mm Height Range	UF-DPAO-E	40mm/50mm/60mm/80mm Joist Cradle	Each		£ 4.00 / Each	£ 6.40 / Each		5000	8
Square Decking Tiles	DT300STS	300mm x 300mm x 23mm	Each	Cedar, Charcoal, Chocolate, Coffee, Grey, Light Grey, Redwood, Wood	£ 3.00 / Each	£ 4.00 / Each	3696	11088	13
Square Decking Tiles	DT300STM	300mm x 300mm x 23mm	Each	Cedar, Charcoal, Chocolate, Coffee, Grey, Light Grey, Redwood, Wood	£ 3.00 / Each	£ 4.00 / Each	3696	11088	13
Co-Extruded Decking Tile	CO300M	300mm x 300mm x 23mm	Each	Beige, Maple, Light Grey, Silver Grey, Middle Grey, Oak, Teak B, Redwood, Teak, Walnut, IPE, Anthracite	£ 3.50 / Each	£ 5.00/ Each	5544	11088	14
Solid Rectangular Deck Tile	DT600R	300mm x 600mm x 23mm	Each	Cedar, Charcoal, Chocolate, Coffee, Grey, Light Grey, Redwood, Wood	£ 5.00 / Each	£ 10.00 / Each	1800	5400	14
Wall Cladding	UF-C156C21WP	156mm x 21mm	Metre	Cedar, Charcoal, Chocolate, Coffee, Grey, Incanus, Light Grey, Redwood, Wood	£ 2.50 / mtr	£ 5.00 / mtr	20' Container, 2 - 3 Colours per container	10000	16
Wall Cladding	UF-C174C20.4WP	174mm x 20.4mm	Metre	Cedar, Charcoal, Chocolate, Coffee, Grey, Incanus, Light Grey, Redwood, Wood	£2.50 / mtr	£ 5.00 / mtr	20' Container, 2 - 3 Colours per container	9300	16
Wall Cladding	UF-C172C14.2	172mm x 14.2mm	Metre	Cedar, Charcoal, Chocolate, Coffee, Grey, Incanus, Light Grey, Redwood, Wood	£2.50 / mtr	£ 5.00 / mtr	20' Container, 2 - 3 Colours per container	13500	16
Wall Cladding	UFW-219S26	219mm x 26mm	Metre	Cedar, Charcoal, Chocolate, Coffee, Grey, Incanus, Light Grey, Redwood, Wood	£ 4.50 / mtr	£ 7.50 / mtr	20' Container, 2 - 3 Colours per container	5800	16
Wall Cladding	UFW-CO219S26 NG	219mm x 26mm	Metre	Cedar, Charcoal, Chocolate, Coffee, Grey, Light Grey, Redwood, Wood	£ 4.50 / mtr	£ 7.50 / mtr	20' Container, 2 - 3 Colours per container	5800	16
Wall Cladding	UFW-CO219S26 NG	219mm x 26mm	Metre	Cedar, Charcoal, Chocolate, Coffee, Grey, Light Grey, Redwood, Wood	£ 4.50 / mtr	£ 7.50 / mtr	20' Container, 2 - 3 Colours per container	5800	16
Wall Cladding	UFW-CO142S12WP NG	142mm x 12mm	Metre	Cedar, Charcoal, Chocolate, Coffee, Grey, Light Grey, Redwood, Wood	£ 3.30 / mtr	£ 5.00 / mtr	20' Container, 2 - 3 Colours per container	12700	16
Fence	Privacy Fence Type 4 - WPC	1800mm x 1800mm	Unit	Anthracite, Brown, Grey, Custom	£ 102.00 / Panel kit	£ 170.00 / Panel kit	100 Sets	270 sets	19 - 20
Fence	Privacy Fence Type 4 - WPC	900mm x 1800mm	Unit	Anthracite, Brown, Grey, Custom	£ 78.00 / Panel Kit	£ 107.00 / Panel Kit	100 Sets	540	19 - 20
Fence	Privacy Fence Type 4 - Co - Extrusion	1800mm x 1800mm	Unit	Anthracite, Brown, Grey, Custom	£ 112.00 / Panel kit	£ 170.00 / Panel kit	100 Sets	270 Sets	19 - 20
Fence	Privacy Fence Type 4 - Co Extrusion	900mm x 1800mm	Unit	Anthracite, Brown, Grey, Custom	£ 85.00 / Panel Kit	£ 117.00 / Panel Kit	100 Sets	540	19 - 20

Description	Code	Size/s	Unit	Colour/s	Trade Price (exc)	Retail Price (exc)	MOQ	20' Container Qty	Page
Fence	Privacy Fence Type 1 - WPC	1800mm x 1800mm	Unit	Anthracite, Brown, Grey, Custom	£ 102.00 / Panel kit	£ 170.00 / Panel kit	100 Sets	190	21
Fence	Privacy Fence Type 2 - WPC	1800mm x 1800mm	Unit	Anthracite, Brown, Grey, Custom	£ 102.00 / Panel kit	£ 170.00 / Panel kit	100 sets	190	21
Fence	Privacy Fence Type 2 - WPC	900mm x 1800mm	Unit	Anthracite, Brown, Grey, Custom	£ 78.00 / Panel Kit	£ 107.00 / Panel Kit	100 Sets	300	21
Fence	Privacy Fence Type 3 - WPC - 3D / Embossed Woodgrain	1800mm x 1800mm	Unit	Anthracite, Brown, Grey, Custom	£ 112.00 / Panel kit	£ 180.00 / Panel Kit	100 Sets	190	22
Fence	Privacy Fence Type 3 - WPC - 3D / Embossed Woodgrain	900mm x 1800mm	Unit	Anthracite, Brown, Grey, Custom	£ 88.00 / Panel kit	£ 117.00 / Panel Kit	100 Sets	190	22
Fence	Privacy Fence Type 4 - WPC, Sanding	1800mm x 1800mm	Unit	Anthracite, Brown, Grey, Custom	£ 102.00 / Panel kit	£ 170.00 / Panel kit	100 Sets	190	22
Fence	Privacy Fence Type 4 - WPC, Sanding	900mm x 1800mm	Unit	Anthracite, Brown, Grey, Custom	£ 78.00 / Panel Kit	£ 107.00 / Panel Kit	100 Sets	270	22
Fence	Stack Fence One - WPC - Sanding	1800mm x 1800mm	Unit	Anthracite, Brown, Grey, Custom	£ 112.00 / Panel kit	£ 180.00 / Panel Kit	100 Sets	250	23
Fence	Stack Fence Two - WPC - 3D Embossed	1800mm x 1800mm	Unit	Anthracite, Brown, Grey, Custom	£ 127.00 / Panel kit	£ 199.00 / Panel Kit	100 Sets	250	23
Fence	Stack Fence Three - WPC - Sanding / Wood Grain	1800mm x 1800mm	Unit	Anthracite, Brown, Grey, Custom	£ 110.00 / Panel Kit	£ 175.00 / Panel Kit	100 Sets	250	24
Fence	Stack Fence Four - Sanding/ Wood, Grain 3D, Embossed Wood	1800mm x 1800mm	Unit	Anthracite, Brown, Grey, Custom	£ 100.00 / Panel Kit	£ 165.00 / Panel Kit	100 Sets	250	24
Fence Doors	WPC Fence Doors (9 Panels)	1800mm x 900mm	Unit	Black, Dark Grey, Middle Grey, Light Grey, Dark Oak, Chocolate, Brownish Red, Original Wood, Beige	£ 135.00 / Panel	£ 185.00 / Panel	100 Sets	270	26
Fence Doors	WPC Fence Doors (11 Panels) - Co Extrusion	1792mm x 1095mm	Unit	Black, Dark Grey, Middle Grey, Light Grey, Dark Oak, Chocolate, Brownish Red, Original Wood, Beige	£ 142.50 / Panel	£ 215.00 / Panel	100 Sets	240	26
Fence Post	Fence Post Co - Extruded	90mm x 90mm	Metre		£ 13.65 / mtr	£ 19.99 / mtr			
Fence Post	Fence Post Co - Extruded	100mm x 100mm	Metre		£ 13.65 / mtr	£ 19.99 / mtr			
PVC Insert Strip for concrete post	PVC- Fence - Strip		Metre		£ 4.50 / mtr	£ 7.50 / mtr			



Other Prices

Interlocking Decking Tiles, Wall Cladding, WPC Fence Boards, and Fence Doors Pricing

At Dan Dek, we offer competitive and bespoke pricing on our Interlocking Decking Tiles, Wall Cladding, WPC Fence Boards, Fence Range, and Fence Doors. Our goal is to provide tailored solutions that meet your unique requirements, including container sizes of 20' and 40'.

Our pricing is customised based on the volume and type of products you need, ensuring you only pay for exactly what fits into your supply chain. Whether you're looking for one-off shipments or rolling stock as part of your ongoing supplier network, we can provide quick and accurate quotes to suit your needs.

Why Choose Dan Dek?

- **Tailored Solutions:** We customise every container to match your exact specifications.
- **Flexible Quantities:** Pricing varies based on your container fill, giving you full control over your costs.
- **Fast Quoting:** Our streamlined process ensures you receive a quote quickly, helping you plan effectively.
- **Competitive Rates:** Our prices are designed to be incredibly competitive, making us a trusted partner for your projects.

Whether you're restocking inventory or expanding your product range, Dan Dek has the expertise and flexibility to support your business. Contact us today to get a personalised quote and find out how we can streamline your supply chain.

Let us tailor your container – your requirements, your way!