

Effective Date | January 5, 2026



General Price List

Justin Dalton, Director
Tabitha Whetzel, Director
Matt Dabson, Apprentice Director
Janna Jenkins, Creative Director
Jared Jenkins, Licensee in Charge



You have been given this General Price List (GPL) as a result of discussing funeral arrangements. The Federal Trade Commission (FTC) requires us to present this GPL before proceeding with any specific decisions or discussions. You have rights as a consumer to know exactly what fees you may be charged and why. You also have the right to select only the services that you want.

In the following pages, you are going to find an abundance of information, much of which could be quite overwhelming. We want to simplify the selection process by putting services and options together in an easy-to-understand package. Lastly, we want to give you the confidence to make an educated, informed decision.

TITLE	PAGE NUMBER
Itemized Pricing	2-6
Traditional Burial Packages	7
Cremation Packages	8-9
Casket Price List	Available Upon Request
Outer Burial Container Price List	Available Upon Request
Our Team	13-14
Payment Policy	15

GENERAL PRICE LIST

EFFECTIVE DATE: January 5, 2026

The goods and services shown below are those we can provide to our customers. You may choose only the items you desire. However, any funeral arrangements you select will include a charge for our basic services and overhead. If legal or other requirements mean you must purchase any items you did not specifically ask for, we will explain the reason in writing on the statement we provide describing the funeral goods and services you selected.

BASIC SERVICE FEE OF FUNERAL DIRECTOR AND STAFF

\$3395

Our fee for the services of funeral director and staff includes but is not limited to staff to respond to initial service request; arrangement conference with family or responsible party; the arrangement of the funeral; preparation and filing necessary authorizations and permits; recording vital statistics; preparation and placement of obituary notices; staff assistance before, during and following the funeral, including coordination with those providing other portions of the funeral, e.g., cemetery, crematory, and others. Also included in these charges are overhead expenses relative to our facilities, such as insurance, maintenance and utility expenses, secretarial and administrative costs, equipment and inventory costs. The fee for our basic services and overhead will be added to the total cost of the funeral arrangements you select.

EMBALMING

\$895

Except in certain special cases, embalming is not required by law. Embalming may be necessary, however, if you select certain funeral arrangements such as a funeral with viewing. If you do not want embalming, you usually have the right to choose an arrangement that does not require you to pay for it, such as direct disposition or a closed casket service.

OTHER PREPARATION / LIMITED CARE

\$285

Can include bathing, cosmetology, dressing, casketing, and preparing your loved one for ID viewings when embalming is not required.

BARIATRIC FEE

\$350

This fee will be applied to itemized statement of goods and services for decedents over 300 lbs. regardless of services selected.

USE OF FACILITIES AND STAFF FOR VISITATION	\$615
Our services include set-up of visitation area, placement of encased remains, display of floral arrangements and memorial table(s), supervision, and attendance during the visitation. This fee allows for up to four hours of visitation with friends and family. <i>We kindly request visitations at our facility to end promptly at 8 pm.</i>	
ADDITIONAL VISITATION (PER HOUR)	\$300
Each hour of visitation beyond four hours on the same day will result in an additional charge. If separate days of visitation are requested, the charges will be adjusted to the lowest rate.	
SUNDAY/HOLIDAY SERVICE CHARGE	\$750
This fee will be added to facility, equipment and staff fees for any services held on Sunday/Holidays.	
USE OF FACILITIES AND STAFF FOR FUNERAL CEREMONY	\$525
Our services include one hour of visitation prior to the ceremony, set-up, coordination, and supervision of the funeral service, display of floral arrangements, and/or memorial table(s). Use of audio/visual equipment or other equipment needed.	
USE OF FACILITIES AND STAFF FOR MEMORIAL SERVICE	\$615
Our services include set-up of a designated area, placement of encased remains, display of floral arrangements and memorial table(s), supervision, and attendance during the ceremony.	
STAFF FOR GRAVESIDE SERVICES ONLY	\$525
Our services include set-up of graveside area, placement of encased remains, transportation of floral arrangements, audio equipment, supervision and attendance during the ceremony.	
USE OF EQUIPMENT AND STAFF FOR CHURCH SERVICE	\$525
Our services include set-up of designated area, placement of encased remains, transport and display of floral arrangements, and equipment, supervision, and attendance during the service.	

HOSPITALITY DURING VISITATION (Refreshments Only)	\$350
Includes the use of our reception area, tables, linens, use of buffet, hot/cold beverage service, necessary displays for food and room attendant. Prior notification must be given to staff. This service is intended to support guests during a visitation or ceremony and is not a stand-alone gathering.	
VISITATION AND FUNERAL CEREMONY (SAME DAY)	\$615
Our services include set-up of visitation area, placement of encased remains, display of floral arrangements and memorial table(s), supervision, and attendance during the service.	
RECEIVING REMAINS FROM ANOTHER FUNERAL HOME	\$3395
This fee includes our basic service fee for funeral director and staff to coordinate receiving remains from another funeral home only. If other services are selected, they will be itemized on a statement of goods and services.	
FORWARDING REMAINS TO ANOTHER FUNERAL HOME	\$3395
This fee includes our basic service fee for funeral director and staff to coordinate forwarding remains from another funeral home only. Transportation fees will be itemized separately along with any additional services selected on the statement of goods and services.	
DIRECT CREMATION	\$2800
This fee includes basic services of funeral director and staff, other preparation, removal from place of death*, transportation to crematory, alternative cremation container, necessary permits and crematory fees, ID Viewing, (Alternative containers encase the body and can be made of materials like fiberboard or composition materials (with or without an outside covering)).	
DIRECT CREMATION WITHOUT ALT. CONTAINER	\$2615
This fee includes basic services of funeral director and staff, other preparation, removal from local place of death, transportation to crematory and ID Viewing. Our crematory requires an alternative container, which you can provide. (Alternative containers encase the body and can be made of materials like fiberboard or composition materials (with or without an outside covering)).	

SHELTERING / REFRIGERATION (per day)	\$75
---	-------------

This fee will be applied after the fourth day we receive the decedent into our care. This would only be included if the responsible party cannot provide reasonable circumstances to delay services. Such things would include our schedule, weather, holidays or international travel.

DIRECT BURIAL	\$4305
----------------------	---------------

This fee includes basic services of funeral director and staff, other preparation, removal from local place of death and transportation to the cemetery. Any additional services will be included on the Statement of Funeral Goods and Services Selected. This fee does not include taxes, casket, outer burial container or any other cemetery requirements. EMBALMING IS NOT REQUIRED FOR DIRECT BURIAL.

DIRECT BURIAL WITH MINIMUM METAL CASKET	\$6015
--	---------------

This fee includes basic services of funeral director and staff, other preparation, removal from local place of death and transportation to the cemetery, 20-gauge steel non-gasketed casket and ID Viewing. Any additional services will be included on the Statement of Funeral Goods and Services Selected. This fee does not include taxes, an outer burial container or any other cemetery requirements.

USE OF FACILITIES AND STAFF FOR RECEPTION GATHERING	\$1500
--	---------------

Our services include use of our reception space for a gathering of family and friends without a body or cremated remains present. Services include room set-up, tables, linens, memorial display area, audio/visual support for music or tribute video, staff supervision and coordination for up to two hours. Food and beverage are not included. Families may provide outside catering or select optional hospitality services. This service may be selected in addition to any funeral, memorial, cremation, or disposition option, or as a stand-alone gathering.

TRANSPORTATION FEES

Local Institution (hospital or nursing home)	\$250
In Home (requires two employees)	\$300
Use of Hearse to Cemetery (up to 30 miles)	\$375
Transportation per loaded mile (Long Distance Ground)	\$2.75
Service Utility/Van-Cemetery or Crematory	\$200

REGISTER MATERIAL / STATIONERY / PROGRAMS

Trifold Register Set (Oversized Register, Trifold Memorials, 1 Memorial Candle and 12 Bookmarks)	\$300
Standard Register Set (Oversized Register, Standard Folders)	\$210
Service / Memorial Cards Only	\$110
Register Book Only	\$95
Full Color Funeral Program Printing - Per Sheet	\$2.25
Funeral Program Design Set-up	\$75

PERSONALIZATION OPTIONS

Vinyl Casket Wrap/Design (price starting at)	\$1100
Personalized Casket Panel (embroidered or printed)	\$285
Your Own Artifacts and Personal Items on Display	Included

CASKET CHOICES

PRICE RANGE \$1710 to \$9900

A complete price list can be found on Pages 10-11

OUTER BURIAL CONTAINERS

PRICE RANGE \$1525 to \$23,225

A complete price list can be found on Page 12.

Package Pricing

Traditional Burial Services

Simple to understand pricing that can be tailored to meet specific needs. Simply choose a package, casket, and register material. Outer burial container may be required by cemetery. Cash advances not included (newspaper obituary, death certificates, flowers, cemetery charges, etc.)

Traditional Services

\$9260

- Basic services of funeral director and staff
- Embalming (only required for open casket viewing)
- Other preparation (dressing, casketing and cosmetology)
- Facilities, equipment, and staff for visitation
- Facilities, equipment, and staff for the funeral ceremony
- Removal from place of death* (local institution)
- Hearse to cemetery*
- Standard Register Set
- 20 Gauge Steel Gasketed Casket Selection from Casket Price List

Same Day Services

\$8735

- Basic services of funeral director and staff
- Embalming (only required for open casket viewing)
- Other preparation (dressing, casketing and cosmetology)
- Facilities, equipment, and staff for visitation & funeral ceremony
- Removal from place of death* (local institution)
- Hearse to cemetery*
- Standard Register Set
- 20 Gauge Steel Gasketed Casket Selection from Casket Price List

** Additional fees may apply for distances greater than 30 miles or transfers from death that occurs at home. (Prices above do not include tax or cash advances)*

Cremation Packaging

Simple to understand pricing that includes the most traditional selections. Packaging can be tailored to meet specific needs, if necessary. Choose a package and register material. The package includes all service fees, use of facilities and staff, transportation, rental casket or alternative cremation container, cremation and necessary permits (included cash advances subject to change), one memorial DVD and a basic metal urn.

Traditional One Day Service

\$7093

- Basic services of funeral director and staff
- Embalming
- Other preparation (dressing, casketing, and cosmetology)
- Facilities, equipment, and staff for visitation & funeral ceremony
- Removal from place of death*
- Transportation to crematory
- Cremation and Necessary Permits (This charge can change without notice) **
- Standard register set
- Hardwood Rental Casket
- Cultured Marble Urn
- Memorial Page and Video Tribute

Memorial Service

\$3828

- Basic services of funeral director and staff
- Use of Facilities, Equipment, and Staff for Visitation (2 hours) and Service
- Removal from place of death*
- Transportation to Crematory
- Cremation and Necessary Permits (This charge can change without notice) **
- Alternative Cremation Container (required by crematory)
- ID Viewing During Business Hours M-F (up to 30 minutes)
- Standard Register Set
- Basic Metal Urn Allowance
- Memorial Page and Video Tribute

Simplicity

\$2800

- Basic services of funeral director and staff
- Other Preparation
- Removal from place of death*
- Transportation to Crematory
- Cremation and Necessary Permits (This charge can change without notice)**
- Alternative Cremation Container (required by crematory)
- ID Viewing During Business Hours M-F (up to 30 minutes)
- Basic Metal Urn Allowance
- Memorial Page and Social Media Sharing

** Additional fees may apply for distances greater than 30 miles or transfers from death that occurs at home.*

***Additional fees will apply for deceased over 300 lbs.
(Prices above do not include tax or cash advances)*

OUR TEAM



Justin Dalton's co-workers would describe him as selfless, understanding and genuinely caring. He was an engineering student at WVU when he felt a calling to serve others, and his interest in the funeral industry quickly turned to full-time employment. More than 15 years after his graduation from the Pittsburgh Institute of Mortuary Science, Justin continues to provide guidance and support to local families. He has the experience and temperament to help you create a meaningful tribute and create an atmosphere of compassion and respect.

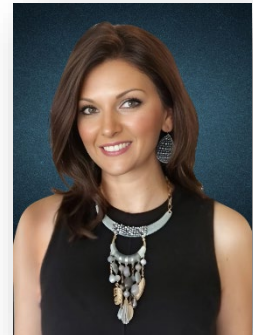


Tabitha Whetzel obtained a BS degree in Psychology from Fairmont State University in 2016 and spent years caring for individuals suffering from mental illness at WVU Medicine before deciding to follow her true calling in the funeral service profession. Tabitha began school at the Pittsburgh Institute of Mortuary Science in October of 2018 and started her journey with Fred L. Jenkins Funeral Home as a Student Intern shortly after. She completed all her requirements to attain her funeral director's service license in 2022. With her education, experience, and easy-going personality she will provide you with exceptional care during a most difficult time.



Matt, who has been new to the team since September 2023, can be described as empathetic, creative, and compassionate. After high school, Matt took a break to pursue his passion for music, playing bass guitar and drums and singing in multiple bands. During this time, he also worked with individuals with disabilities, which deepened his love for helping others and his community. In 2023, Matt graduated from West Virginia University with a Regents Bachelor of Arts, with minors in Music, History, and Human Services, achieving a lifelong goal. Seeking other ways to contribute, Matt felt a calling to serve, inspired by his personal experiences with funeral directors. Matt is a 2025 graduate of PIMS. Matt enjoys playing video games with friends, learning Spanish, and building terrariums in his free time.

Janna Kerns-Jenkins, our Creative Director and co-owner, has your ease in mind each and every day. She strives to create a comfortable atmosphere for families and understands the value of tradition and putting 'home' back in what we do. She creates receptions to suit anyone's style, taste, and budget. Janna is best known for the unique and personalized memorial gallery tributes that she designs with individuals' cherished personal mementos and possessions. Janna is also responsible for our public relations efforts including special events, outreach, marketing, advertising, and social media.



Jared Jenkins, our Licensee in Charge and co-owner started in 1999 while attending WVU. He quickly learned that serving others in this profession was his passion. He is a graduate of Pittsburgh Institute of Mortuary Science and has been with the firm for 25 years. He and his wife Janna purchased the funeral home in 2014 and continue the exceptional care that their predecessors provided. It is Jared's goal to create a service that shares your story, and to provide his co-workers with the resources necessary to celebrate the uniqueness of each family. His mission will always be to exceed your expectations.

Payment Policy

One of the most important responsibilities that we have to each family we serve is to bring your emotional and financial needs together, whatever the circumstances may be. We do not want your selections to be more than affordable, nor less than you would like to arrange.

40% of the funeral goods and services selected or total cash advances, whichever is higher, is due at the time of the arrangement conference. The remaining balance of the account is to be paid in full within 30 days, provided no outstanding balances exist**.

Fred L. Jenkins Funeral Home does not finance or extend credit.

Estates cannot be a guarantee of payment due to our 30-day payment term.

- We accept all major credit cards. *
- We accept cash, checks, cashier's checks, and money orders.
- We accept life insurance under the following conditions: **
 1. The policy amount must cover the FULL cost of services selected.
 2. If the policy does not cover the full cost of services selected, the difference will be expected at time of arrangements.
 3. The beneficiary must be known and willing to sign all necessary paperwork.
 4. The policy must be verified to be in force.
 5. The policy must be beyond the contestable period.

It is our desire to provide first-class service to everyone. We respect the dignity of those we serve and ask that if you are dealing with limited funds, please do not hesitate to tell us of your circumstances and we will tailor a service to fit your budget. We will do our best to provide a dignified service with the funds available.

*3% Processing fee will be applied to any invoices paid by card.

**Any fees associated with insurance assignment processing will be clearly disclosed on the Funeral Statement of Goods and Services.

Outstanding balances or limited funds available may require full payment before services are finalized and published.

EARLY PAYMENT DISCOUNTS MAY BE APPLIED IN CERTAIN CIRCUMSTANCES.

Funeral provider reserves the right to change the terms and conditions of this payment policy at any time.

UPDATED October 2021