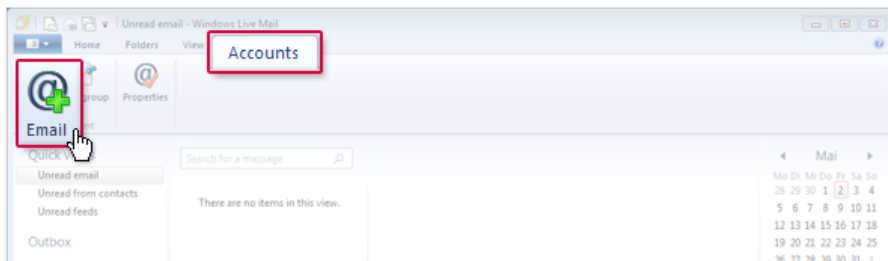


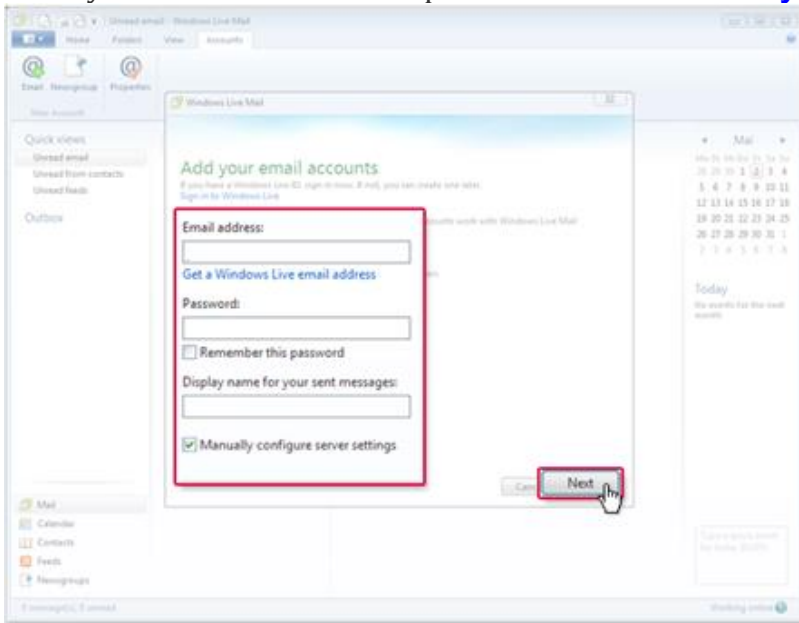
Setting Up Windows Live Mail

Synchronize your mail.com mailbox with Windows Live Mail. Your e-mail will be sent to your application in regularly intervals using IMAP.

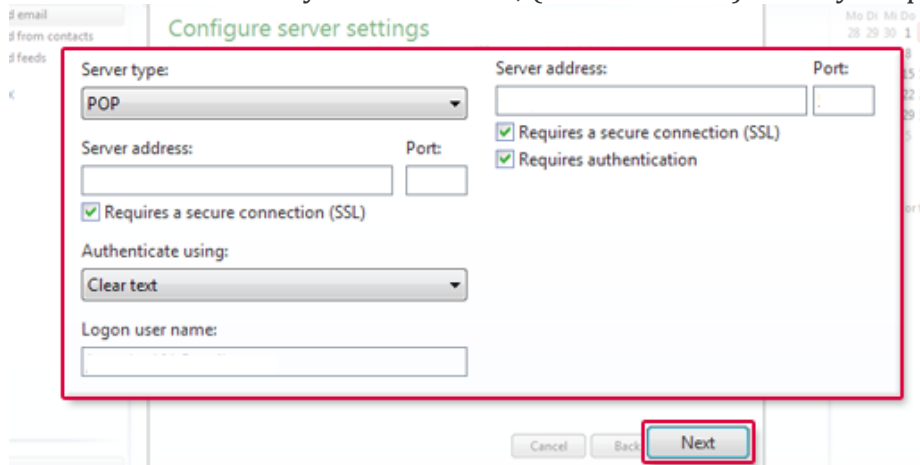
Select **Accounts** and then **E-mail**.



Enter your e-mail address and password. Check **Manually configure server settings**. Click on **Next**.



Choose the server type **POP** and enter the incoming server address **pop3.midplains.coop** and the port **110**. Check **Requires a secure connection**. Enter the outgoing server address **smtp.midplains.coop** for the outgoing server and port **25 or 587**. Check each box for **Requires a secure connection** and **Requires authentication**. Enter your user name, (Ex: a6684420) Usually "a" plus your 7-digit phone number.



Click on **Next** and then on **Finish**.