



COMMON Ground

NEMAHA-MARSHALL ELECTRIC CO-OP ASSN., INC.

BOARD OF TRUSTEES

David J.

Ronnebaum

President, District 3

Melvin D. Kruse

Vice President, District 1

Robert L. Voet

Secretary, District 1

Dean D. Becker

Treasurer, District 3

James J. Caffrey

Trustee, District 2

Matthew R.

Holthaus

Trustee, District 2

David J. Koch

Trustee, District 2

Tom L. Niehues

Trustee, District 3

Todd A. Sandmann

Trustee, District 1

STAFF

Kathleen M.

O'Brien

General Manager

Kimberly R.

Broxterman

Office Manager

Glenda L. Cafer

Corporate Attorney

Justin R. Burdick

Accountant

Patrick J. Holthaus

Line Superintendent

CONTACT US

P.O. Box O, 402 Prairie Street

Axtell, KS 66403

785-736-2345

8 a.m.-4:30 p.m., Monday-Friday

www.nemaha-marshall.coop



Nemaha-Marshall Electric
Cooperative Association, Inc.

COINCIDENT PEAK

**FEB. 18
AT HOUR
ENDING NOON**

FROM THE MANAGER

Lineworkers Are Wired for Service



Kathleen O'Brien

In the quiet hours before dawn breaks, while many of us are still nestled in our beds, lineworkers begin their day, often clad in flame-resistant clothing, safety goggles,

rubber gloves and thick, heavy boots.

They are the individuals who epitomize dedication to service in its purest form. As we celebrate Lineworker Appreciation Day on April 18, this is an important moment to reflect on the essential role they play in our daily lives.

Amid towering utility poles and power lines, lineworkers exhibit a strength that goes far beyond the physical. Whether battling inclement weather, troubleshooting technical problems or navigating treacherous heights, lineworkers demonstrate resilience and a quiet determination to keep our lights

on, our homes comfortable, and our communities connected.

Nemaha-Marshall Electric crews travel across our five-county service territory, building, maintaining and repairing parts of our local system. Their extraordinary skills ensure our homes remain connected to the grid, businesses stay operational, and emergency services remain accessible — a lifeline that connects us all.

In moments of crisis, when the lights go out and we find ourselves in the dark, lineworkers emerge as beacons of hope. Their swift response restores normalcy, offering reassurance in times of uncertainty. Whether repairing storm-ravaged power lines or ensuring continuity during emergencies, their unwavering commitment illuminates life when we need it most.

Nemaha-Marshall Electric lineworkers also answer the call for mutual aid beyond the boundaries of home. Our crews travel to fellow co-ops, near or far, when widespread outages occur

Continued on page 12B ►

OUTAGES FOR DEC. 2024-JAN. 2025

Occasionally, a part or parts of the delivery system fail and an outage occurs. Below are the larger outages that occurred.

Date	Location	Substation	Number of Consumers	Outage Cause
January 30	32-5-12-04	Goff	96	Breaker Tripped-Nothing Found
January 30	35-4-12-03	Goff	96	Bad Underground Connection
February 2	15-2-10-16	Snipe Creek	1	Bad Transformer
February 18	08-1-10-13	Snipe Creek	1	Consumer Neutral Pulled Out of Double Throw

Lineworkers Are Wired for Service Continued from page 12A ▶

and additional support is needed. Cooperation Among Cooperatives is one of our seven guiding principles, and no one embodies this core commitment better than lineworkers.

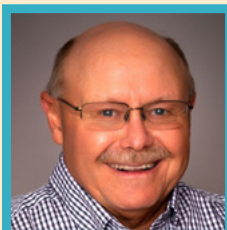
Let's also not forget that on April 23, we celebrate Administrative Professionals Day. The amazing Nemaha-Marshall Electric office staff are dedicated to timely bills and accurate account information. They are the friendly and helpful voices you hear on the phone and the cheerful faces that greet you in the office.

This month, as we celebrate these remarkable employees who ensure reliable power and accurate account information, let's recognize their unwavering dedication to the local communities they serve.

The next time you flip a switch, please take a moment to remember those who make it possible — lineworkers, who are wired for service and dedicated to illuminating life.

This month, we also continue our communication about the

upcoming change to time-of-use billing that we anticipate will happen in the fall. Currently, we are working with a consultant to develop a time-of-use rate. The consultant must analyze the costs associated with certain peak hours and then propose a rate structure to recover those costs. By allocating more costs to a narrow peak window of hours, we anticipate the current \$4.50 cost per kilowatt will be reduced, and our consultant will help us determine what that reduced charge might be and what the peak kilowatt charge will be. Once the consultant has a proposed rate design we will begin beta testing on a few electric accounts to be sure we are collecting the appropriate meter information and producing an accurate bill. After working out all the kinks we will then begin rolling out time of use billing to our residential and irrigation accounts. In the meantime, we encourage all members to get familiar with your hourly usage data available to you on SmartHub. And as always please feel free to reach out to us with any questions you might have.



MEET YOUR TRUSTEES

DEAN BECKER

IF YOU COULD HAVE ANY CAREER, WHAT WOULD IT BE?

Sales/Walmart Greeter (LOL)

WHAT'S ON YOUR LIFE BUCKET LIST? HAVE YOU CHECKED OFF ANY ITEMS?

More traveling. Would like to see Civil War battlefields.

WHAT PODCASTS OR YOUTUBE CHANNELS CAN YOU LISTEN TO FOR HOURS?

Nature programs narrated by David Attenborough.

WHAT HOBBY OR ACTIVITY DO YOU WISH YOU HAD MORE TIME FOR?

History/Genealogy

DO YOU HAVE ANY ARTISTIC OR CREATIVE TALENTS?

Gift of Gab! Definitely NOT drawing.

WHAT'S SOMETHING YOU'VE ALWAYS WANTED TO TRY BUT HAVEN'T YET, LIKE LEARNING A LANGUAGE, E.G.?

Skydiving

SHARE A MOTTO, QUOTE OR MANTRA THAT INSPIRES YOU.

Be kind, work hard, love your neighbor as yourself.

WHAT QUALITY DO YOU ADMIRE MOST IN OTHERS?

Honesty. Those who can fix just about anything!

WHAT PERSONAL CHALLENGES HAVE SHAPED WHO YOU ARE?

Most of my challenges have been minor compared to others.

WHAT ADVENTURE HAVE YOU BEEN DYING TO GO ON?

More traveling

WHAT FOOD COULD YOU EAT DAILY AND NOT GET TIRED OF?

Steak, ice cream and tomatoes.

WHAT WOULD YOUR PERFECT SUNDAY LOOK LIKE?

Church at 7 a.m. then the rest of the day with Diane. A rainy Sunday in June, July and August.

WHAT ARE THREE FUN FACTS ABOUT YOU THAT WE MAY NOT KNOW.

I have four siblings. I like to procrastinate. I am fascinated with the world's food production.

WHAT WOULD YOU BE AND WHY IF YOU WERE AN ICE CREAM FLAVOR?

Neapolitan. I prefer to mix much of my food before eating.

WHAT SONG WOULD YOU SING ON KARAOKE NIGHT?

Toby Keith's "I should have been a cowboy."

WHAT TOPIC COULD YOU TALK ENTHUSIASTICALLY ABOUT FOR HOURS?

History

ARE YOU A COLLECTOR OF ANYTHING?

Pens

WHAT FOOD DO YOU THINK SHOULD BE ILLEGAL?

Dumplings that are not done and pancakes.

LIST ANYTHING ELSE YOU'D LIKE TO SHARE ABOUT YOURSELF.

I really like to meet a new person EVERYDAY!

The Growing Demand on the Power Grid and What We Can Do About It

An Earth Day call to action

With Earth Day around the corner, it's time to reflect on the systems that sustain us. This includes the power grid that keeps our homes comfortable and our modern world running. As climate patterns shift and extreme weather events increase, the grid faces new pressures to meet our growing energy demands. From heatwaves to hurricanes, today's changing conditions test the limits of an infrastructure first built in the late 1800s.

The first power grid, developed in 1882 in New York City, laid the foundation for the modern grid that powers our world. The systems we depend on today were built for past and current weather conditions. However, these conditions are changing. Extreme weather is now the No. 1 cause of blackouts in the U.S., accounting for 80% of major power outages.

HOW DOES EXTREME WEATHER IMPACT THE GRID?

Regions across the U.S. face extreme weather that strains infrastructure not built for extreme conditions. In Texas, limited winterization led to power outages and frozen pipes during the 2021 winter storm, often referred to as Winter Storm Uri. The Pacific Northwest's record heat dome in 2021 increased electricity demand to record highs, causing grid equipment to overheat. In California, utilities routinely implement public safety shutoffs during dry, windy conditions to prevent wildfires.

Extreme weather impacts the grid in several ways. Sometimes, power is still being produced, but it can't reach homes because power lines are down or damaged by fallen trees and debris during storms. During hurricanes or heavy rainstorms, substations — facilities that control and distribute

electricity — can flood, causing widespread outages. Other times, when demand spikes during heatwaves or winter storms, the grid can become overwhelmed, leading to rolling blackouts or outages as supply struggles to meet increased energy demands.

WHAT IS CAUSING THE INCREASED DEMAND FOR ELECTRICITY?

While extreme weather is one source of growing energy demand, development and technology are increasing the demand for energy. This demand is projected to rise 15-20% in the U.S. over the next decade, according to the Department of Energy.

Significant factors impacting this growth are the rise of artificial intelligence (AI) and its expanding data centers, cloud storage, communication tools and much more.

The grid faces two significant opportunities for growth: adapting to extreme weather conditions and meeting the rising energy demand. The energy industry is working tirelessly to ensure the power grid meets these ever-growing challenges and provides a more resilient and sustainable energy system that supports affordability and reliability.

Utility companies, government agencies, regulators and other stakeholders are working to increase grid resilience. Efforts include raising substations that are vulnerable to flooding, deploying battery storage to supplement the grid, expanding renewable energy sources, and connecting regional grids to improve overall stability.

WHAT CAN WE DO?

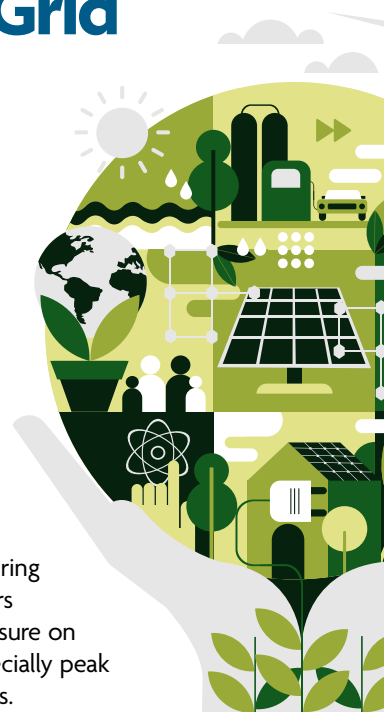
While the challenges facing the power grid are significant, there are steps we

can all take to reduce strain and contribute to a more reliable energy system.

- ▶ Simple actions like running high-energy appliances during off-peak hours can ease pressure on the grid, especially peak demand times.
- ▶ Conducting a home energy audit can identify ways to improve your home's efficiency, reducing both your energy consumption and utility bills.
- ▶ Many utilities offer incentives for renewable energy and energy efficiency programs. Contacting your provider could open the door to helpful resources and savings.
- ▶ Investing in battery storage can provide peace of mind by allowing you to store energy when demand is low to use during peak times. Most importantly, it can be used during power outages. This can help ensure you have electricity when the grid is most vulnerable.

REFLECTING ON EARTH DAY

Earth Day reminds us of the essential systems that sustain us, including the power grid that powers our homes and businesses. By recognizing challenges like extreme weather, increasing energy demand and aging infrastructure, we can take action to make the power grid more sustainable. Every action, from reducing energy consumption to supporting new technologies, contributes to a more resilient future.



TIPS TO AVOID ENERGY SCAMS

Don't fall for a power restoration rip-off. Some scammers will contact you and offer to restore power quickly or in a preferential order if you make an immediate payment. These scams typically occur after major storms or disasters that cause widespread outages. We will never request or require payment to restore power after a natural disaster or storm.

SOURCE: UTILITIES UNITED AGAINST SCAMS



Top 10 Reasons We Appreciate Lineworkers

Electric utility work is essential to our daily and modern lives. From powering our homes and schools to supporting our economy, electricity is a constant — until it's not.

That's when the true heroes step in. Line crews work directly with high-voltage power, often in severe weather and dangerous conditions, to maintain or restore service and safeguard communities from downed lines. Their vital role deserves more than a day of recognition — it deserves our ongoing gratitude.

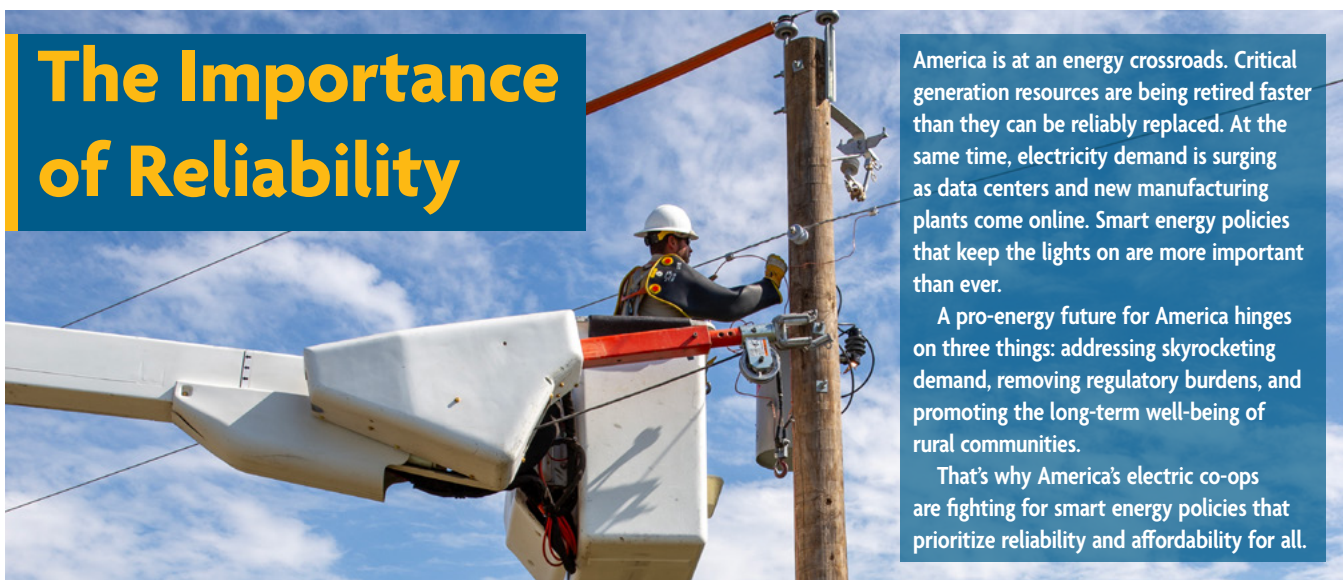
It takes a special kind of person to be an electric lineworker.

Here are 10 of the many reasons we appreciate lineworkers:

- ▶ **THEY ARE EXPERTLY TRAINED** to work on power lines and equipment.
- ▶ **THEY ARE DEDICATED** to safely and efficiently maintaining power.
- ▶ **THEY HAVE A HEART FOR SERVICE**, always looking out for their communities and participating in community events.
- ▶ **THEY CONQUER HEIGHTS** without hesitation.
- ▶ **THEY PRIORITIZE SAFETY** every second of every day.
- ▶ **THEY ANSWER THE CALL** — day or night — to restore power.
- ▶ **THEY ENDURE IT ALL:** rain, shine and extreme weather conditions.
- ▶ **THEY GO WHEN AND WHERE THEY ARE NEEDED**, supporting communities nationwide when severe weather strikes.
- ▶ **THEY HAVE EACH OTHER'S BACKS**, and work together like family.
- ▶ **THEY POWER OUR LIVES AND ENERGIZE OUR COMMUNITIES!** Lineworkers are protectors of safety and keepers of comfort for our communities and beyond. Every day, they bring a spirit of service, unwavering focus and specialized knowledge to a job that demands both skill and heart. Their commitment to safety isn't just a requirement — it's a way of life.

So, to all the lineworkers out there, thank you for running toward electrical challenges when others step back. Thank you for your continuous training, hard work and dedication to keep us all safe. **THANK YOU, LINWORKERS, FOR ALL YOU DO TO KEEP THE LIGHTS ON.**

The Importance of Reliability



America is at an energy crossroads. Critical generation resources are being retired faster than they can be reliably replaced. At the same time, electricity demand is surging as data centers and new manufacturing plants come online. Smart energy policies that keep the lights on are more important than ever.

A pro-energy future for America hinges on three things: addressing skyrocketing demand, removing regulatory burdens, and promoting the long-term well-being of rural communities.

That's why America's electric co-ops are fighting for smart energy policies that prioritize reliability and affordability for all.