



A Smart WiFi platform that automatically builds guest e-mail lists and increases customer engagement.



Benefits to using the MetroGo Wifi:

- 📶 Drives business and awareness from adjacent stores
- 📶 Automates the marketing process for a busy venue owner
- 📶 Gives the venue a new tool to capture e-mail and socially engage
- 📶 Intelligent drip campaign system promotes repeat business
- 📶 Secures the venue POS and Merchant Systems
- 📶 Integrates with popular e-mail list systems



ePAYMENT PROCESSING **SOLUTIONS**

800-771-3719 Fax 302-838-9120

www.metromerchantservices.com

510 Century Blvd, Wilmington, DE 19808



Experience World-Class Payment Processing Technology and Service for your business.



ePAYMENT PROCESSING **SOLUTIONS**

Everything You Need In One Place To Help Your Business Grow!

World-Class Payment Processing Products

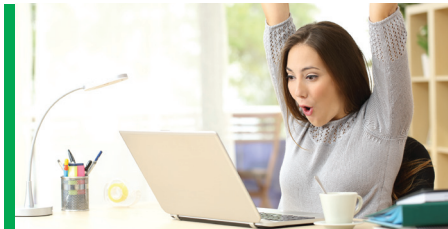
Metro offers and supports a wide range of products for you ePayment processing needs. ePayment solutions come in all shapes and sizes, with lots of bells and whistles to choose from. We offer a wide range of terminal and PC solutions that accept credit and debit cards and checks while offering the flexibility you need. From expanded memory capacity and integrated printers to easy-to-read and easy-to-train touch screens, you will have the latest functionality and connectivity when you choose Metro.

- Payment Terminals
- PC-Based Point-of-Sales Solutions
- Gateways / Virtual Terminals
- Quickbooks Plug-in
- eCheck and ACH Processing
- eCommerce Solutions
- Wireless Terminals
- mCommerce Solutions
- Gift Cards / Branded Programs
- Payment Portals for Billing/Donations
- Customized Payment Solutions
- ATM Systems



Metro Can Help You Take Your Business Even Further By Taking It Online!

- Website Design for Merchants
- Shopping Carts & Integration
- Secured Internet Payment Sites
- Integration Services with Software Programs



World-Class Merchant Services

Starting with Customer Service and Sales Representatives who take the time to listen and assist you in setting up a new account, troubleshooting, billing or more, to getting your FREE rate Check-Up completed, you can count on the service you deserve with the services you like:

- Customer Support
- NSF Pursuit Check Recovery
- PCI Compliance
- Equipment Leasing
- Check Guarantee
- Merchant Cash Advances
- Installation Services/Training
- Simple/Painless Conversion Process

FREE Rate Check-Up!

If you have been processing for at least 2 years, you are due for a review of your payment processing.

- Keep your business healthy and growing
- Get the lowest possible rates for your industry
- Avoid hidden fees & costs
- Understand increasing rate structures
- Find out if your existing equipment is compliant
- Are you properly set up to benefit from multi levels of processing?



Our Guaranteed Savings Program

We guarantee to provide you with a program that meets or exceeds your payment processing needs **OR WE WILL GIVE YOU A CHECK FOR \$500!** We can accomplish this by offering you:

- No hidden fees
- Monthly discounts
- 24/7 technical support
- Lowest possible rates
- Cost-effective equipment pricing
- Best industry practices

Make the call, 800-771-3719 that saves you money...today, or visit us at metromerchantservices.com