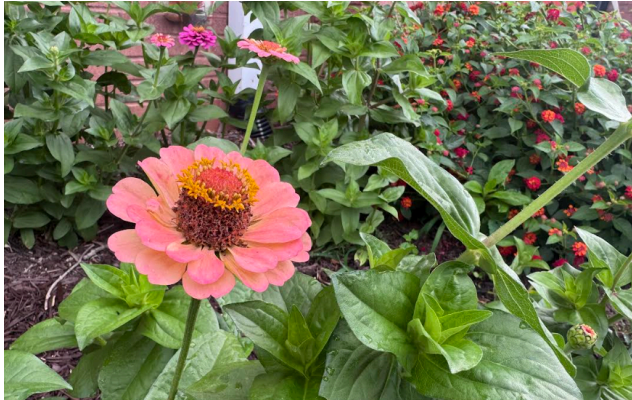




# Epiphany LIGHT

*That all might thrive and serve in the light of God's grace.*

May 24th, 2026  
Ministry Highlights



Spring is in the air and Epiphany is in full bloom! It's so nice to see the results of hard work and cooperation. Some of our beautiful flowers are new from this year's Easter service and work day while others are from year's past!

## Welcome Visitors!

If you are visiting with us, please complete the visitor information on the welcome card in the seat back and place it in the offering plate.

At Epiphany, we practice open communion, which means **ALL** are welcome to the table. If you are here, you are invited to take communion with us.

Children of all ages are welcome in worship at Epiphany! Activity bags for kids are located in the back of the sanctuary at the usher's table.

Check out our website,  
**[epiphanyswanee.org](http://epiphanyswanee.org)**,

for more information about Epiphany or text/call us if we can be of service, **770-831-1966**.

Epiphany is a church that welcomes **ALL!**



Prayer Request



Epiphany Website



Offering (Realm)

Or text "EPIPHANYGA" to 73256



Visitor or Pew Card

## EPIPHANY This Week

### Sunday, May 24

- 9:00am   Worship
- 10:45am   Prayer Circle
- 11:00am   Worship

### Monday, May 25

Memorial Day (Office Closed)

### Wednesday, May 27

- 10:00am   Bible Study (Cafe)
- 7:00pm    Worship Rehearsal (Sanctuary)

### Thursday, May 28

- 10:00am   Bible Study (Google Meet)
- 7:30pm    Serve Team (Google Meet)

### Friday, May 29

- 6:30am    Breakfast Bible Study (Suwanee IHOP)

## Connecting & Growing

**Bible Studies This Week** Wednesday at 10:00am in the Youth room, Thursday at 10:00am on Google Meet & Friday at 6:30am at the Suwanee IHOP.

**Sunday Morning Prayer Circle** meets Sunday mornings at 10:45 in the back of the sanctuary. The group prays for a prepared group of petitions and offers prayers that are on their hearts and minds. Come every week or when you can make it. All are welcome!

**Connect** Please complete our survey by May 31st so your input on how we can reinvigorate our small groups, community engagement and what volunteer opportunities YOU would be interested in participating in can be considered! Contact Bonnie for the link or fill out a paper copy found in the Narthex or check it out online..

**Epiphany Lead Council Meeting** meets May 31st at 12:15 pm in the office area.

**Pub Theology** is Thurs, June 4th at 7:00 pm in the Church café. Hope to see you there for conversation & fellowship!

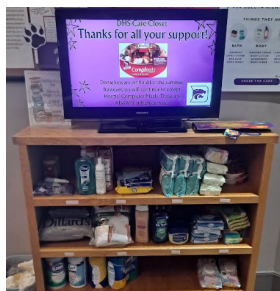
**Men's Group** will gather at the ballfield on Sat, June 6th to watch the Gwinnett Striper's win while catching up and discussing our summer plans. RSVP by emailing Ryan Boylan: [tenor02us@yahoo.com](mailto:tenor02us@yahoo.com) by May 31st.



## Serving & Giving

**Tell the Epiphany Story** Invite others to experience what makes Epiphany a special place. Share the story with others and INVITE them! We can all serve our church this way!

**Duluth Care Closet** We will not be collecting and distributing food for DHS during the summer. However, we will continue to accept Hormel Compleats Meals. These are ALWAYS in high demand, have an extended shelf life, and are frequently sold BOGO at Publix. Please feel free to purchase these at any time. JUST SO Seniors and our VBS students will soon be collecting specific items for service projects, including hygiene needs, school supplies and cleaning products.



Thanks to the Seniors Group for their donations so far!!

**Worship Assistants** Worship is always more meaningful when we participate together. Please consider serving in a role! Contact the office for more info or check out the 'Serving in Worship' page on our website. If you've never participated in a role, don't worry! We will help you every step of the way.

**Music Ministry** If you would like to be a part of our musical arts ministry, we would love to have you share your passion and talent! Please reach out to Pastor Chris or Steve Belfield to chat about the possibilities!

**Guatemala Delegation Visit:** Registration is now open for our journey to ILAG/MILAGRO in August 2026; If you have expressed interest in going, we need you to register ASAP. The \$1000 per person deposit is required by June 1. If you are ready to make your airline reservations the preferred flights are listed in the resources section of the registration form.



There is still time to register or sign up to volunteer!  
If you'd like to help in other ways, we have an active wishlist on Amazon - contact Bonnie or check the Blast for the link.

## Weekly Prayers

Please pray for the following Epiphany community families this week:

Jay Nayyar  
Darlene Newberger  
Jeri and Brian O'Kane  
Marie and Rod Olson



## Upcoming Events

- May 25: Memorial Day (Office Closed)
- May 28: Serve Team Meeting
- May 31: Lead Council Meeting
- June 4: Pub Theology
- June 6: Men's Group Striper's Game
- June 7: Summer Series Faith Formation
- June 10: Just So Seniors
- June 11: Connect Team Meeting
- June 14: Summer Series Faith Formation
- June 15: Book Club
- June 17: Guatemala Team Meeting
- June 18: Grow Team Meeting
- June 22-26: Vacation Bible School

Epiphany's Official Affirmation of Welcome: Our unity is in Christ. We welcome all because God welcomes all, regardless of any human divisions: race or culture, sexual orientation, gender identity, gender expression, or relationship status. We welcome all without regard to addictions, physical or mental conditions, imprisonment, socio-economic circumstances or **anything** else that could divide us!



Follow us on Instagram, @epiphanysuwanee and Facebook at facebook.com/epiphanysuwaneeega