

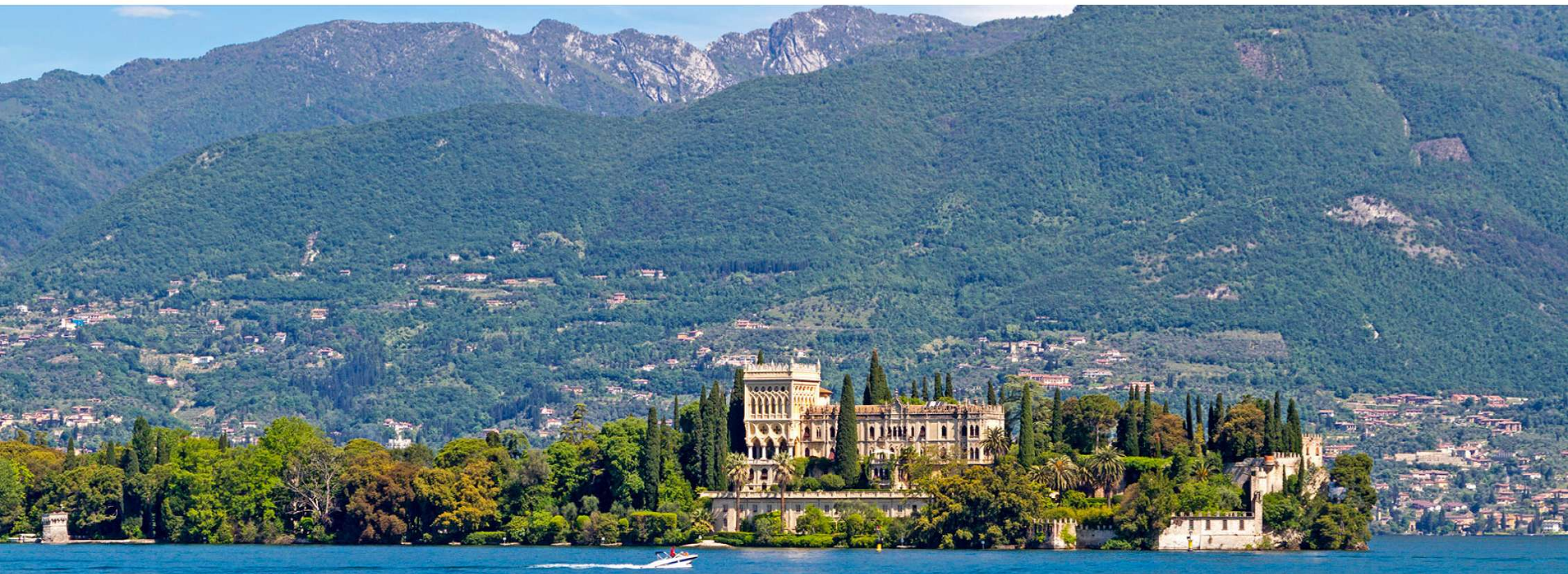


BROCHURE



LAKE GARDA

On the western shore of Lake Garda, in the Municipality of San Felice del Benaco, the project area develops in the hamlet of Portese, in the morainic hills overlooking the cove of Salò, offering a splendid view of the lake and the surrounding mountains. The climate is mild all year round and very comfortable. On beautiful spring days you can witness the triumph of nature in bloom, in summer the light breeze mitigates the high temperatures, autumn offers enchanting sunny days and even in winter the temperatures remain pleasant. From the shores of the lake you can admire the island of Garda, the largest island of the whole Lake Garda. On the island there is a luxurious palace surrounded by wonderful Italian gardens and a rich forest composed of cypresses, acacias and pines.

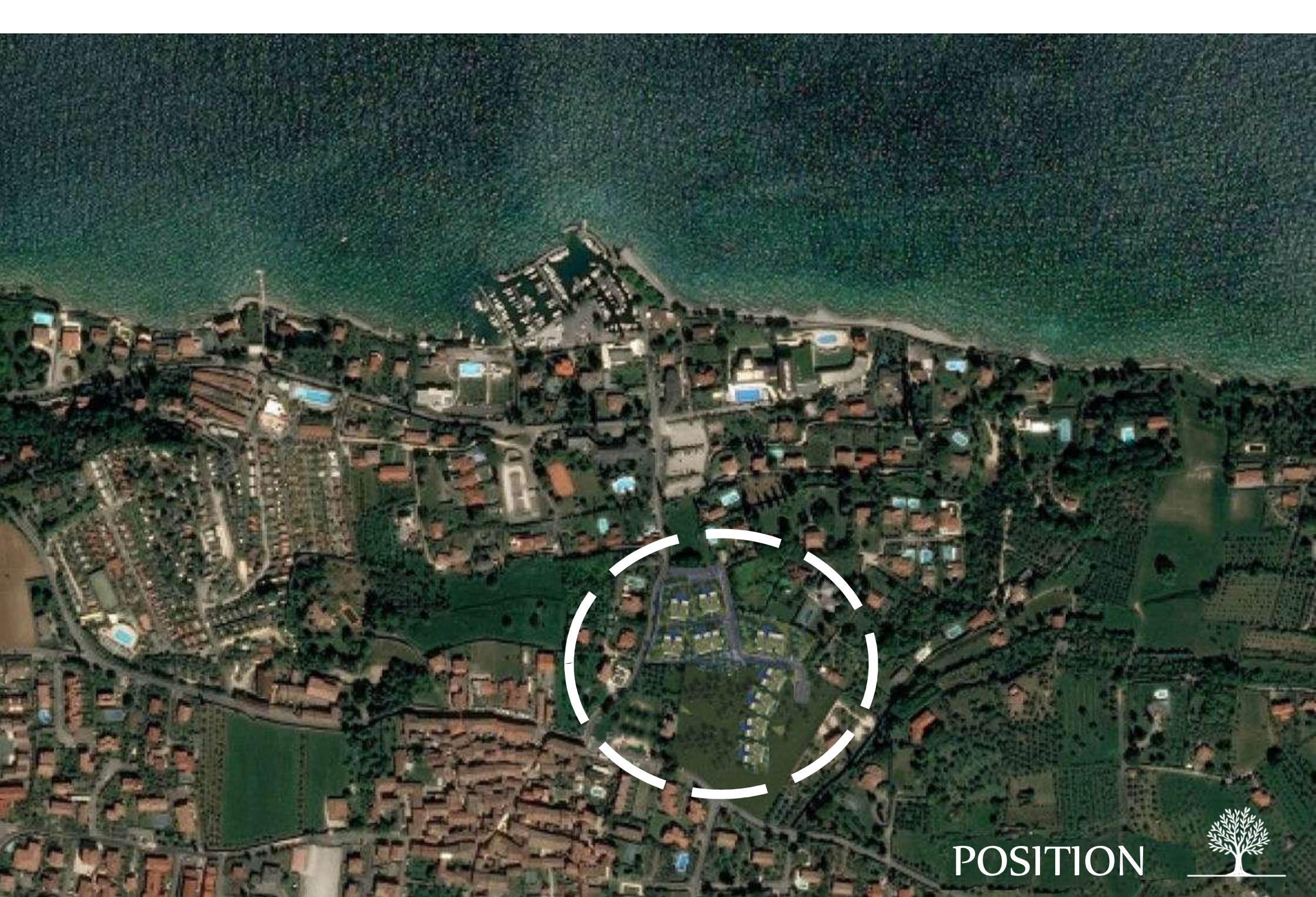




LANDSCAPE

In the development of the project, attention and care have been dedicated to respecting and enhancing the landscape elements. The entire project was therefore conceived following a principle of non-intrusiveness and continuity with respect to the elements characterizing the original area. An in-depth study of the vegetation has made it possible to achieve the objectives set, further enhancing the green areas free from construction, with the maintenance of the essences already present on site, including olive trees and cypresses, and with the contribution of new trees, shrubs and green spaces, as real elements of quality of life. All this also allows you to safeguard privacy by defining the spaces, to protect from the intensity of the summer sun and finally provides a frame for the view of the lake.





POSITION





OVERVIEW





CONCEPT

The complex consists of 40 residential units spread over two floors.

The architectural composition identifies seven buildings and the style is contemporary with the use of sharp lines and rational volumes with large glass surfaces.

On the ground floor, the space projects outwards through the wooden loggias, meeting the blue of the pool water and the green of the gardens.

On the first floor, the large terraces with their glass parapets offer a unique panorama.

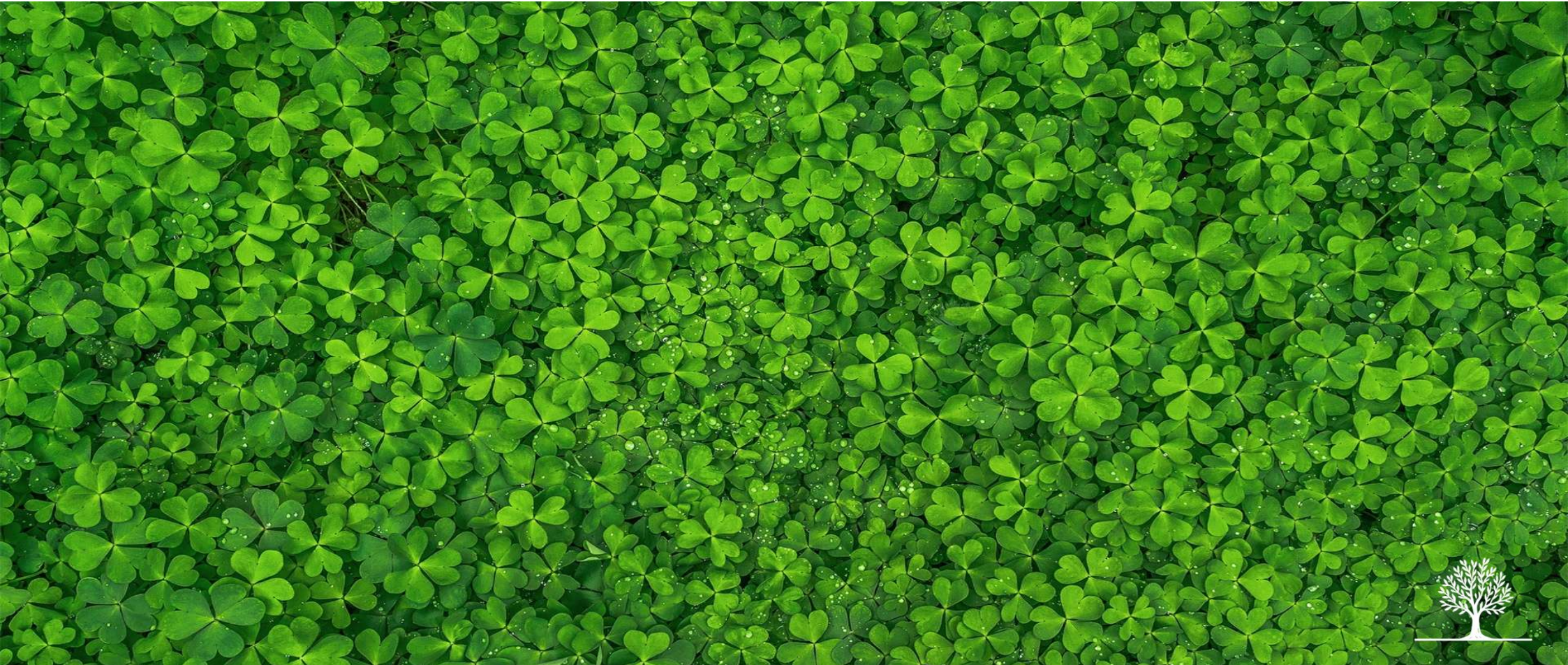
Properties designed as three-room apartments offer different housing solutions.

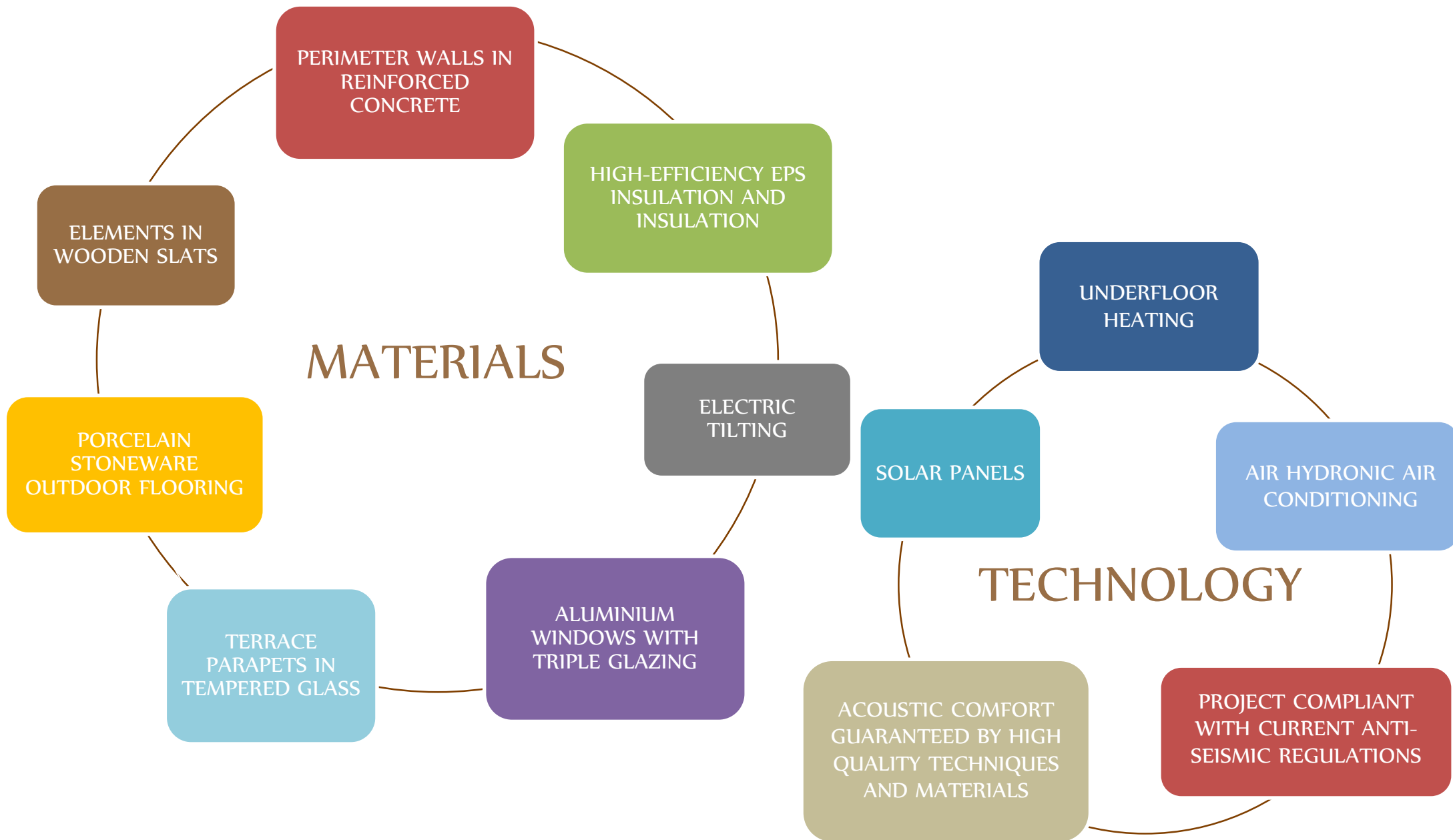




FEATURES

The careful design of the systems and the choice of high-performance materials guarantee the units high energy performance.

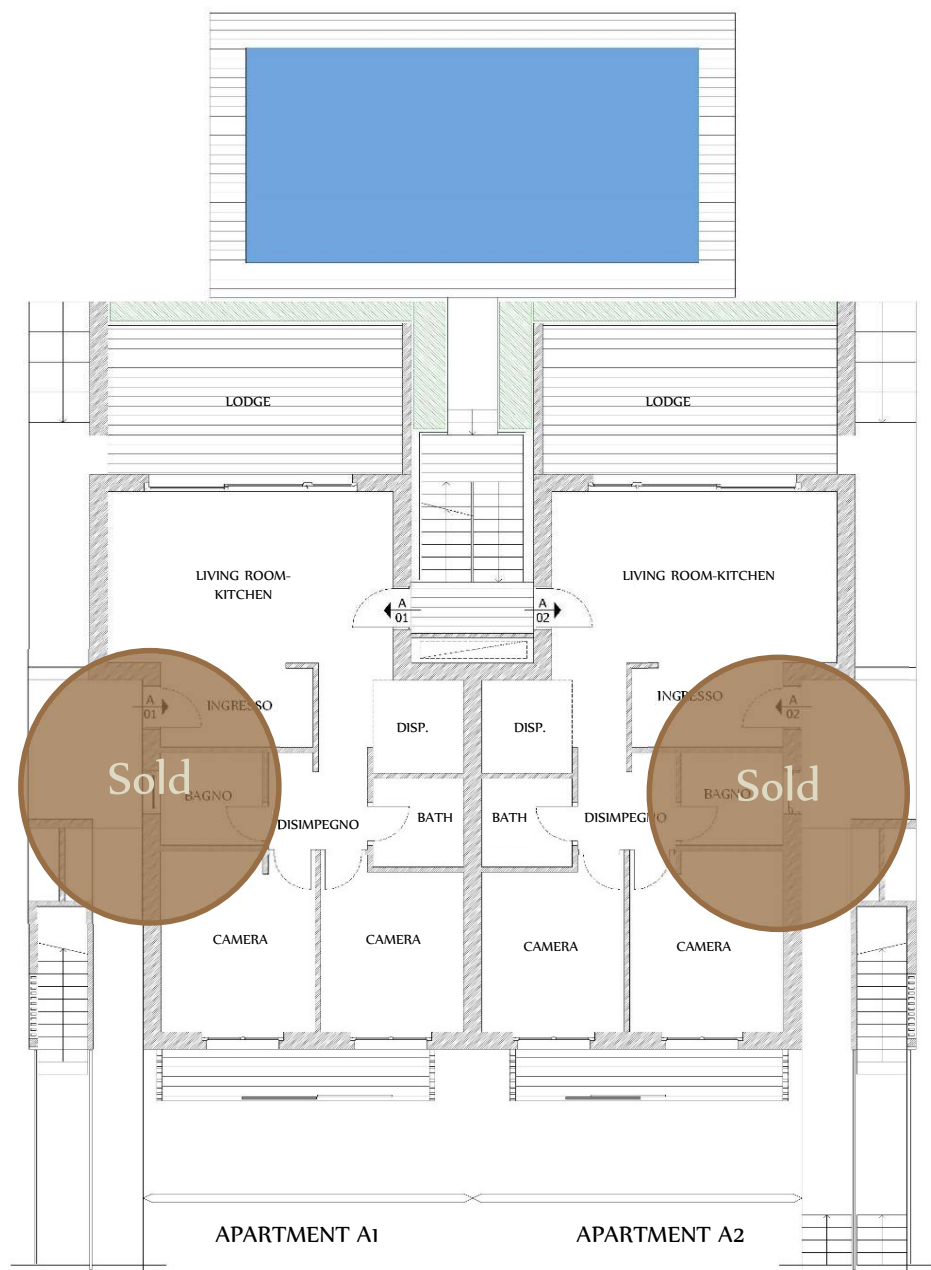






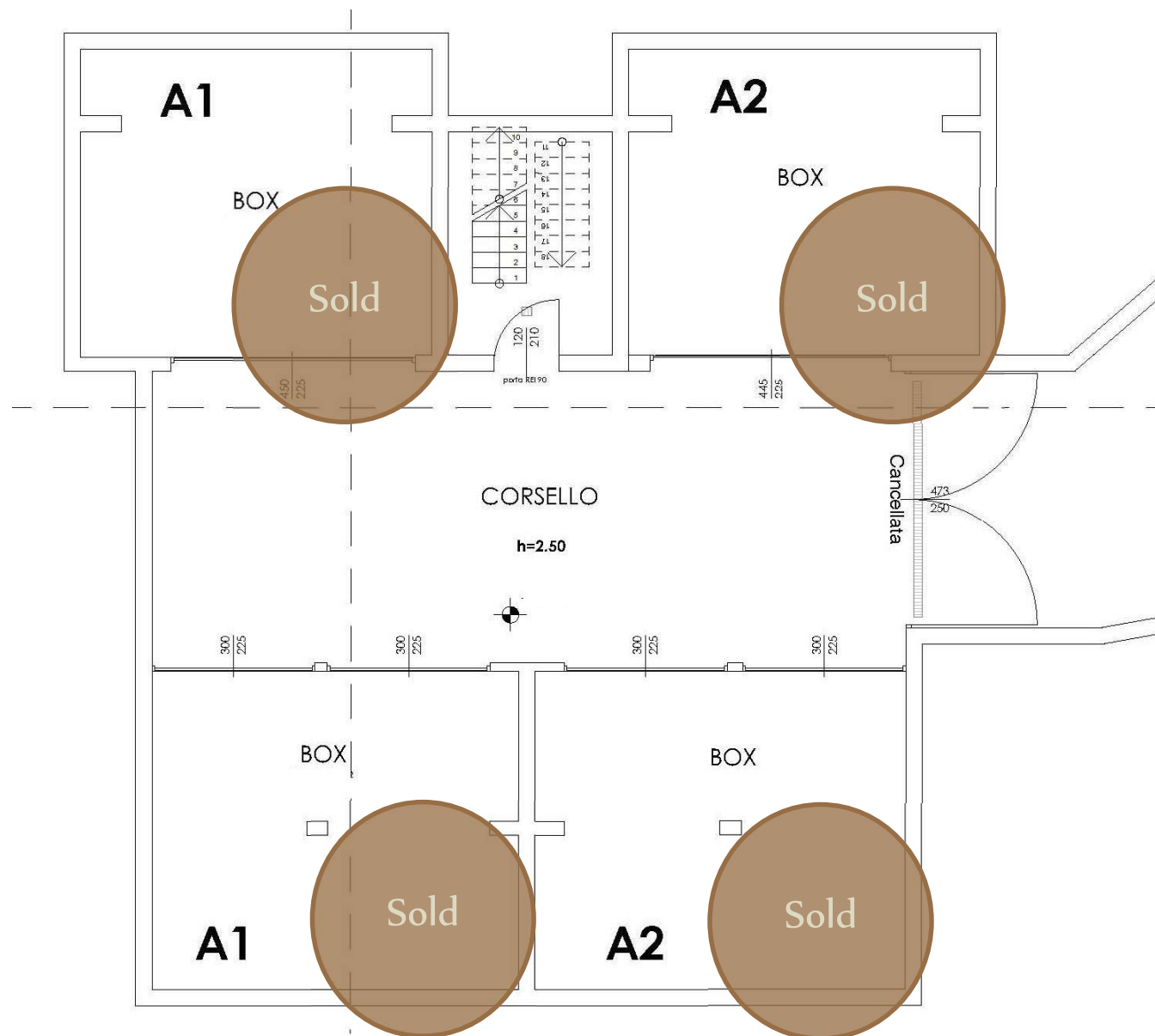
HOUSING SOLUTIONS





LOT A - GROUND FLOOR



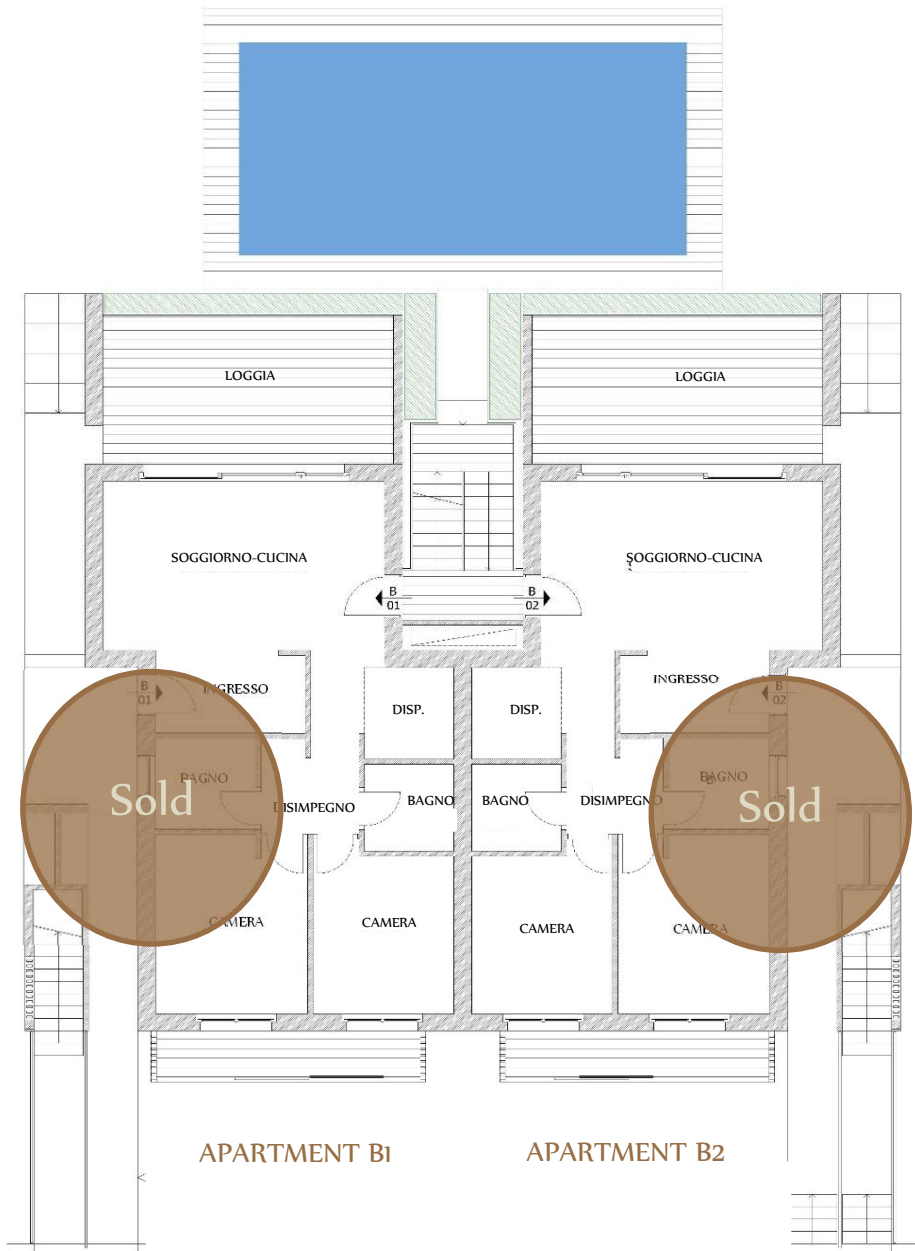


LOT A - BASEMENT



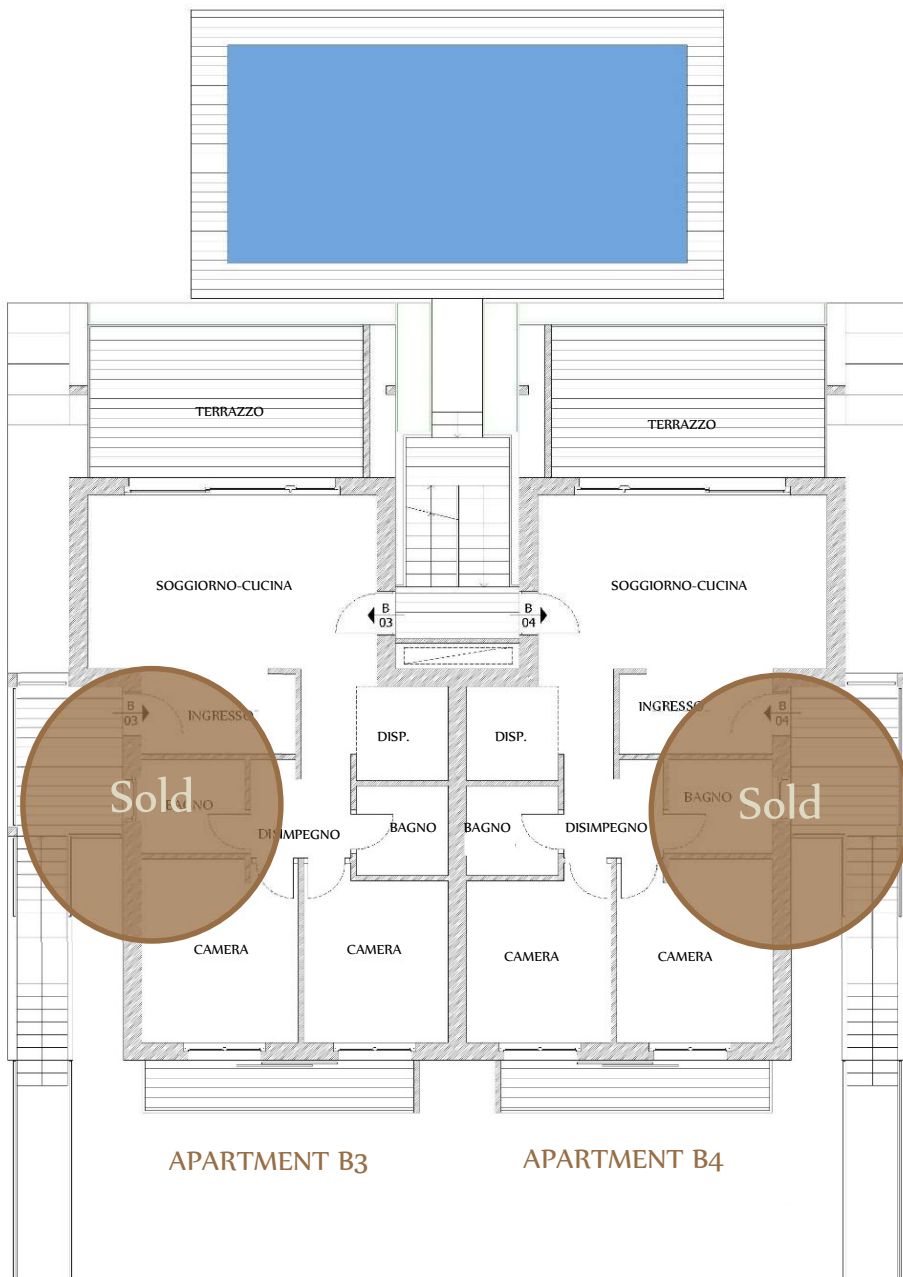


LOT B 



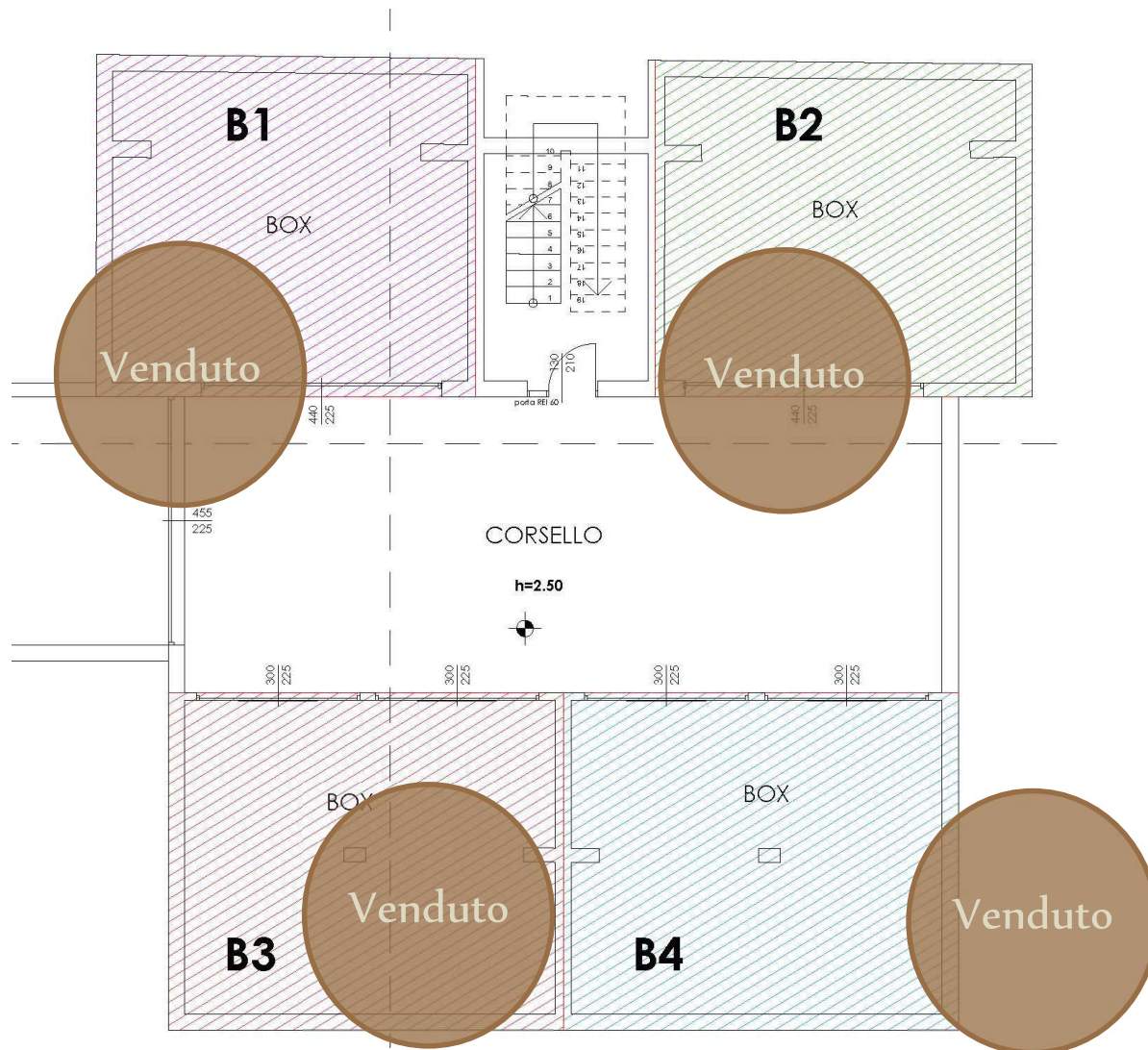
LOT B - GROUND FLOOR





LOT B - FIRST FLOOR



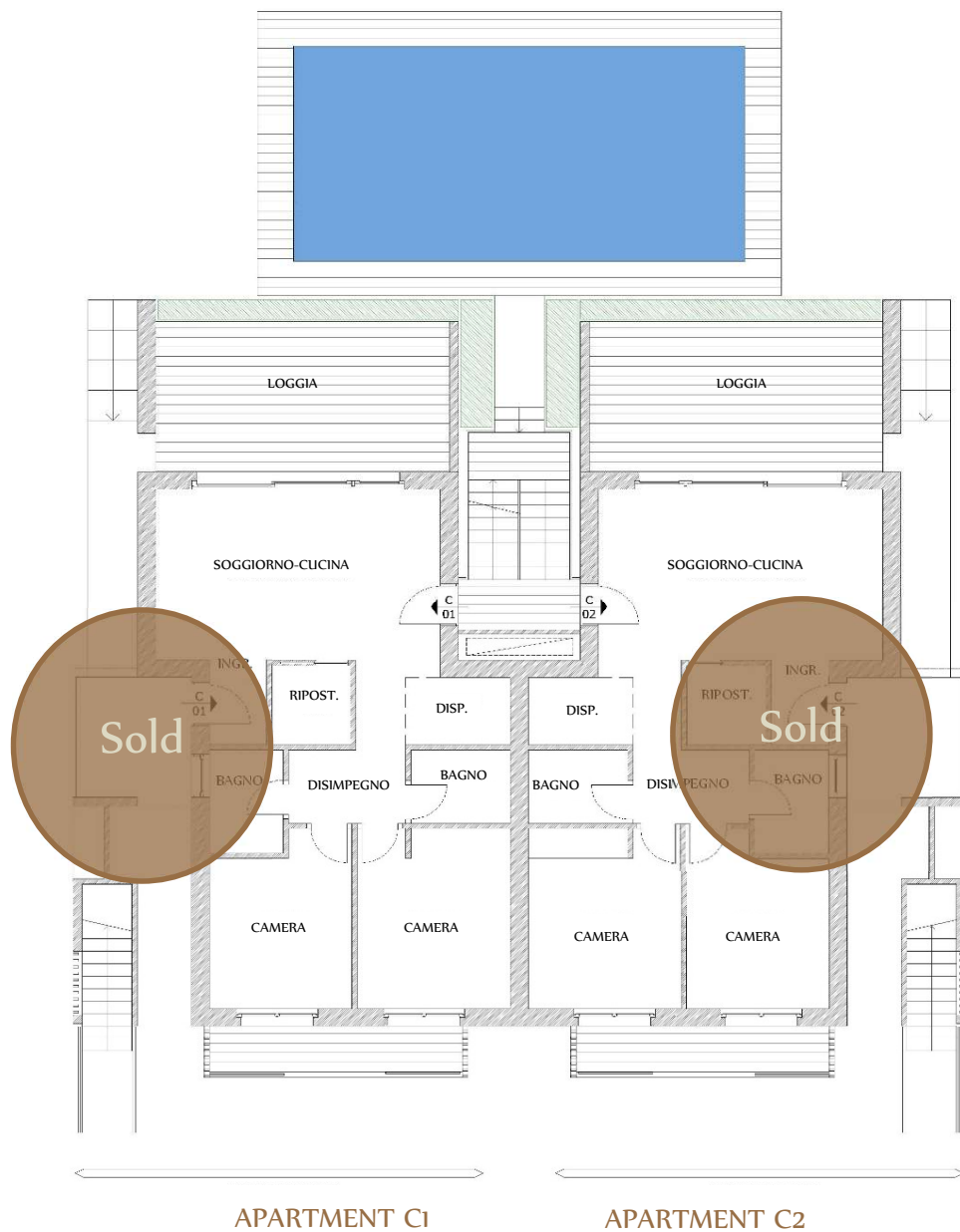


CORPO B - PIANO INTERRATO



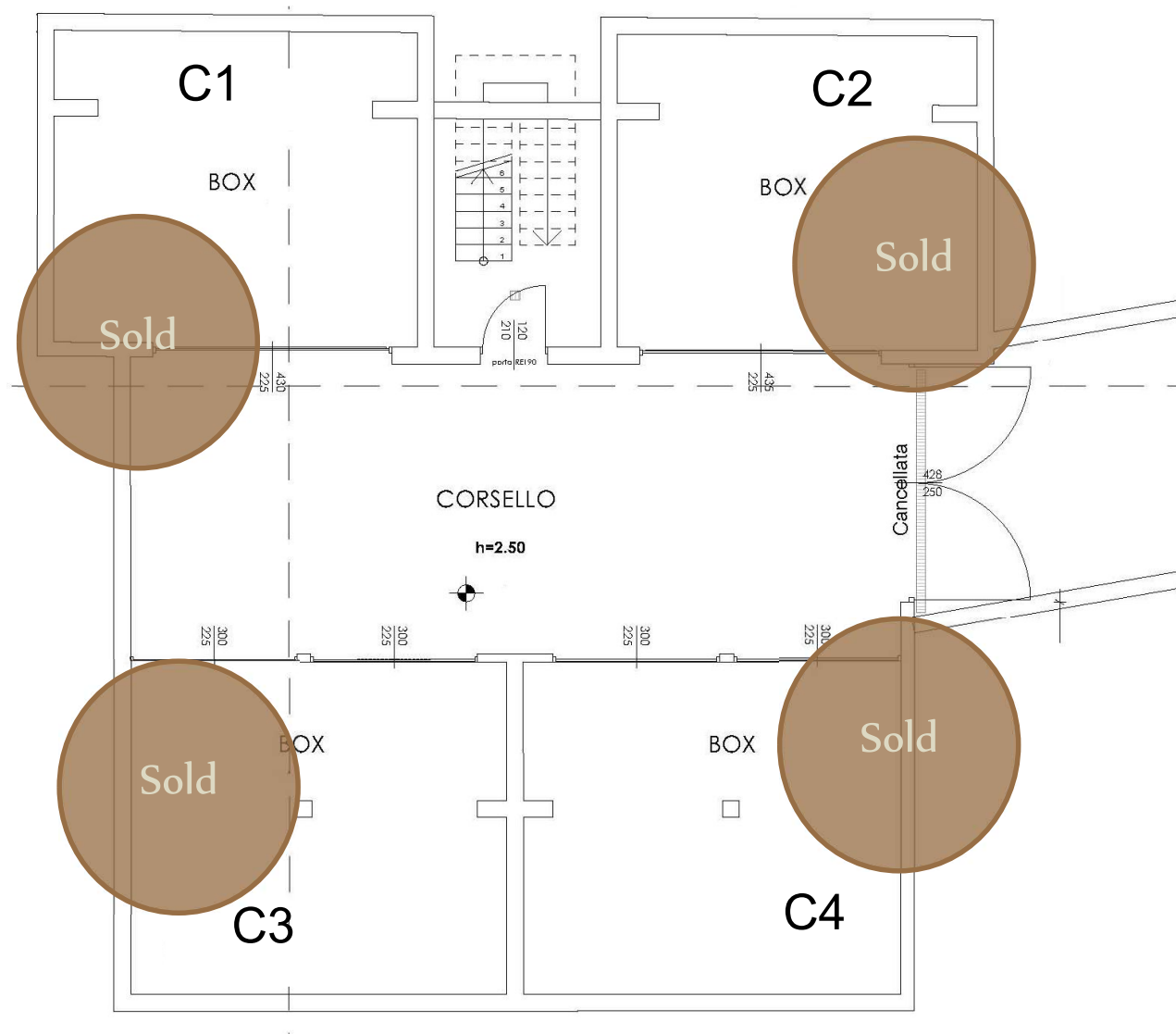


LOT C 



LOT C - GROUND FLOOR





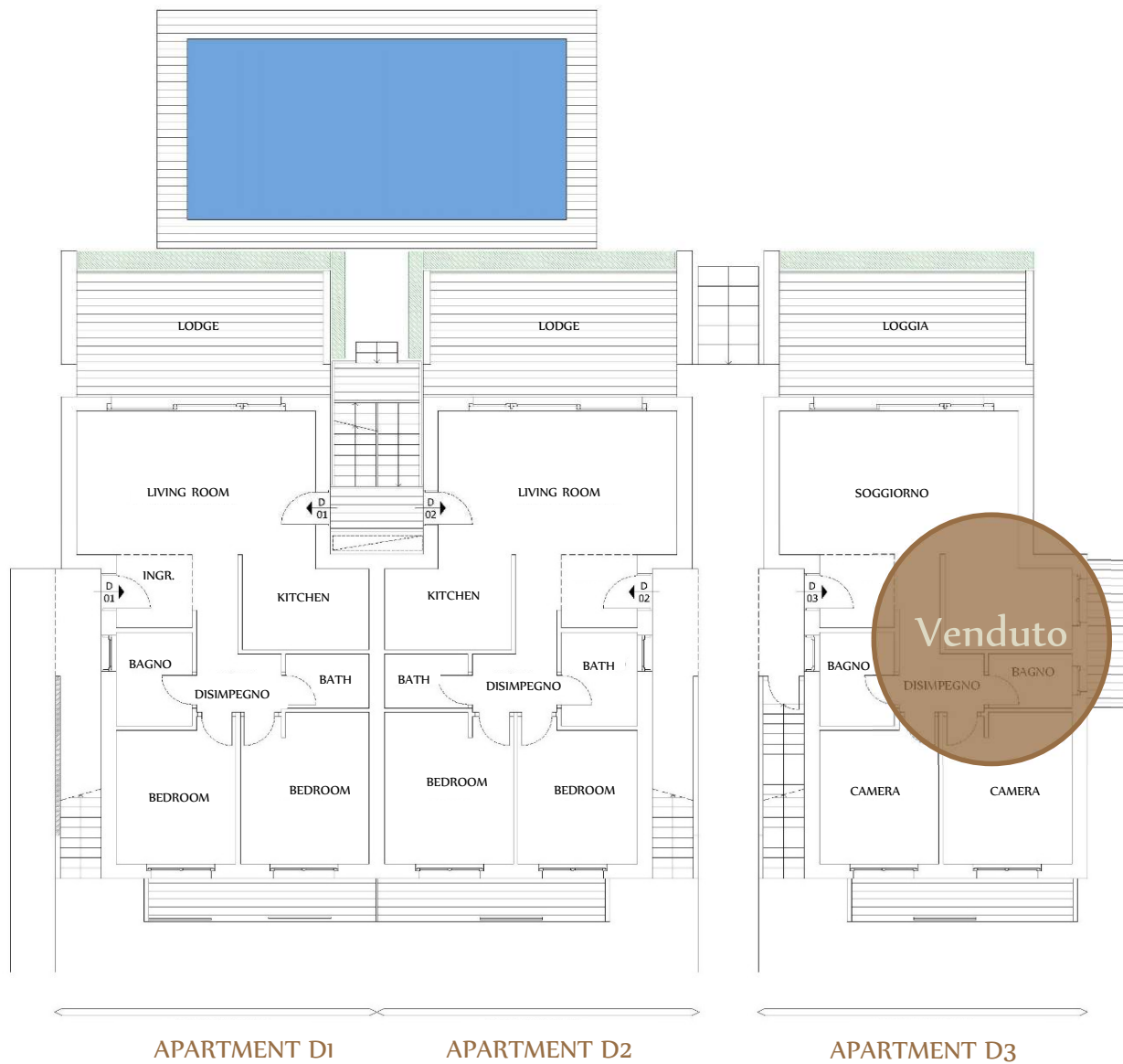
LOT C - BASEMENT





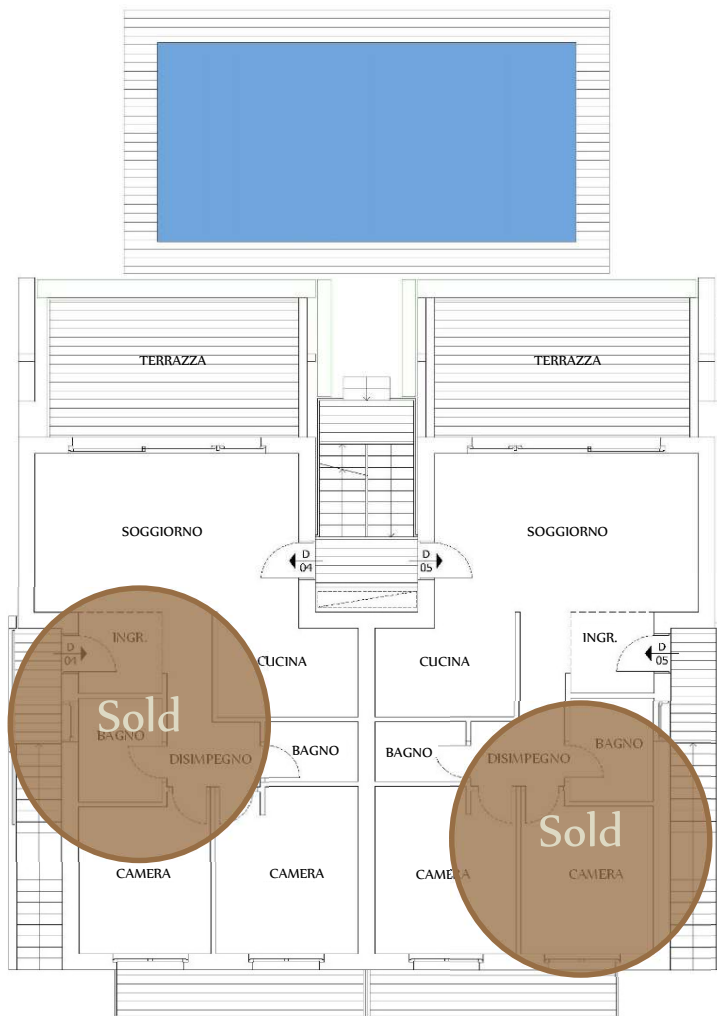
CORPO D





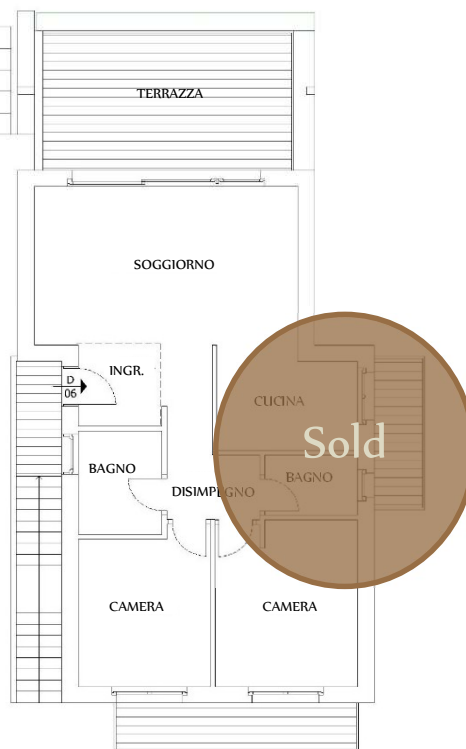
LOT D - GROUND FLOOR





APARTMENT D4

APARTMENT D5



APARTMENT D6



LOT D - FIRST FLOOR





LOT D - BASEMENT



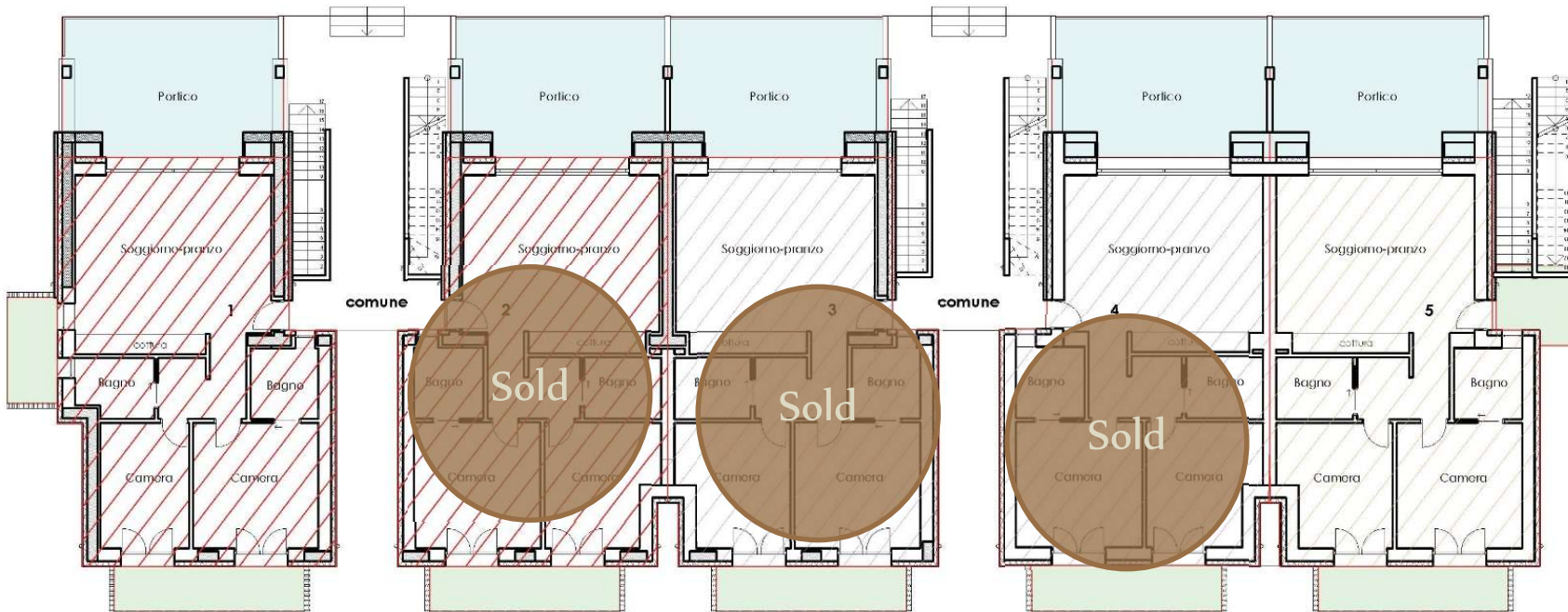


LOT E 



LOT E





APARTMENT E1

APARTMENT E2

APARTMENT E3

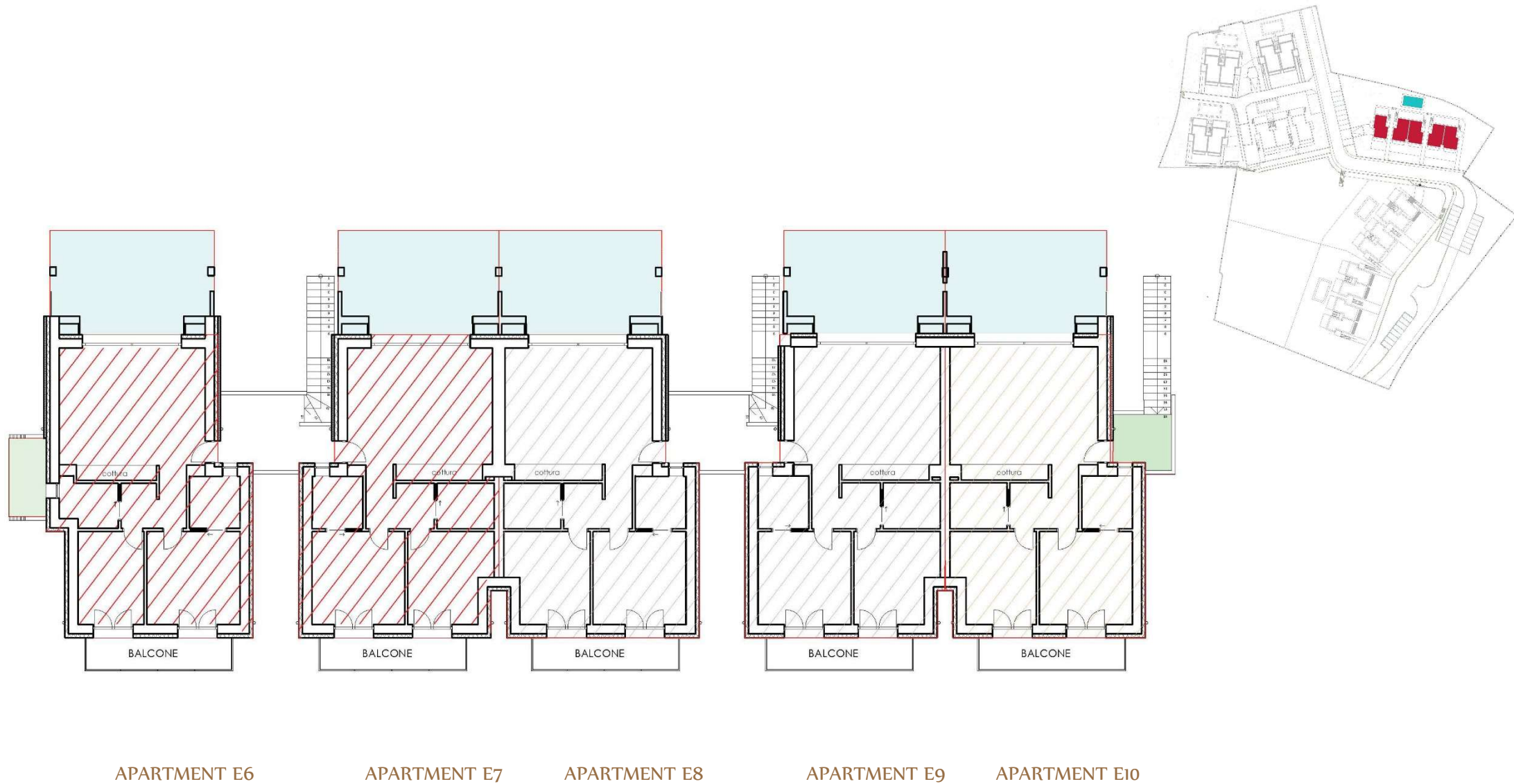
APARTMENT E4

APARTMENT E5



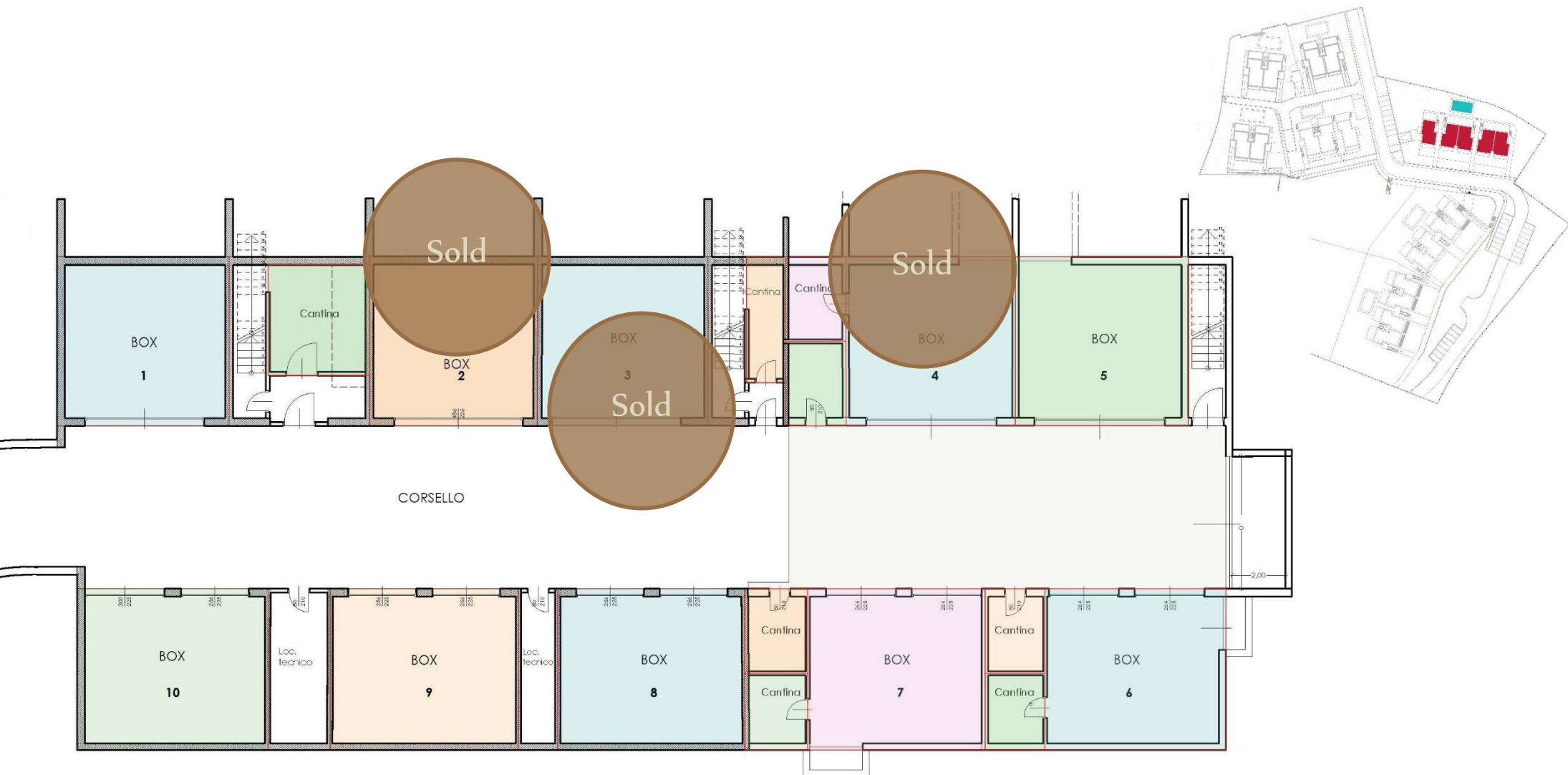
LOT E - GROUND FLOOR





LOT E - FIRST FLOOR





LOT E - BASEMENT

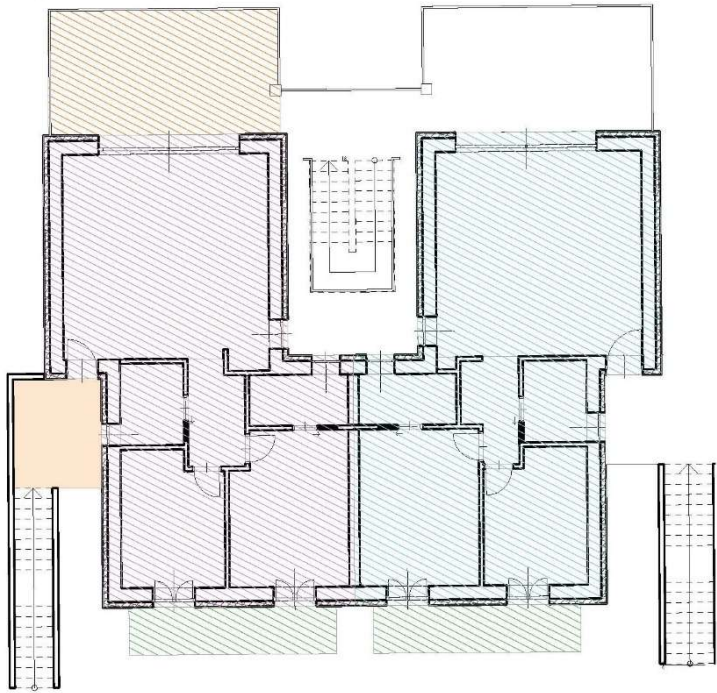




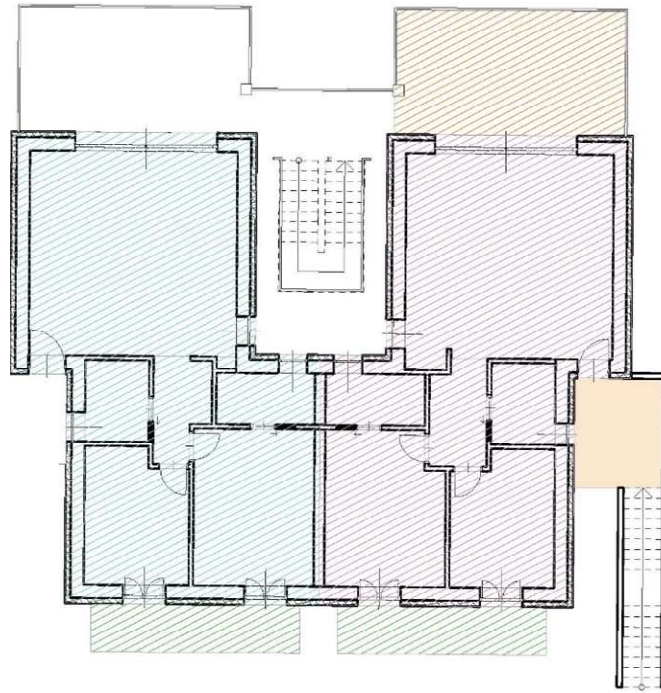
LOT F



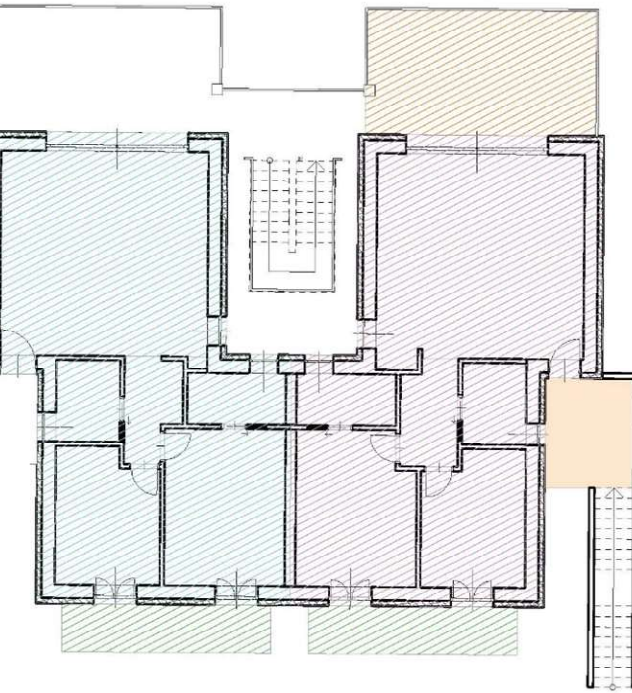




APARTMENT F1



APARTMENT F2

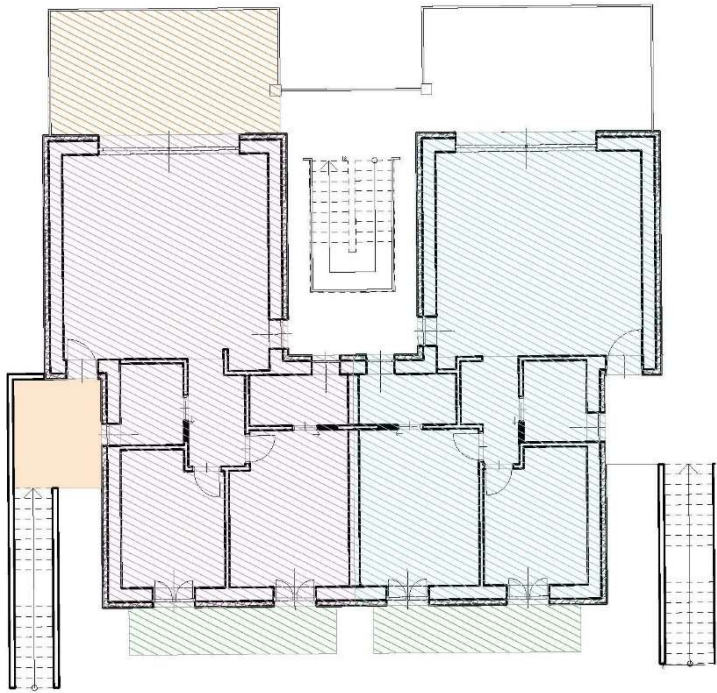


APARTMENT F3

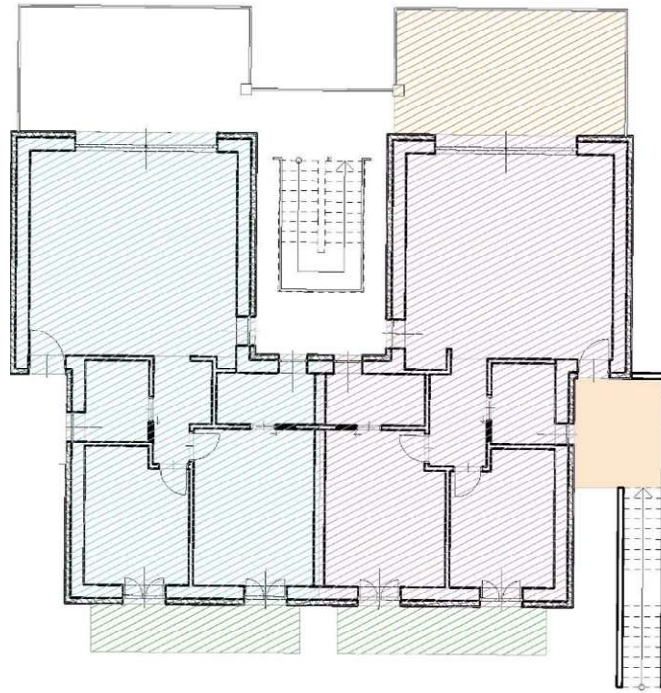


APARTMENT F4





APARTMENT F5



APARTMENT F6

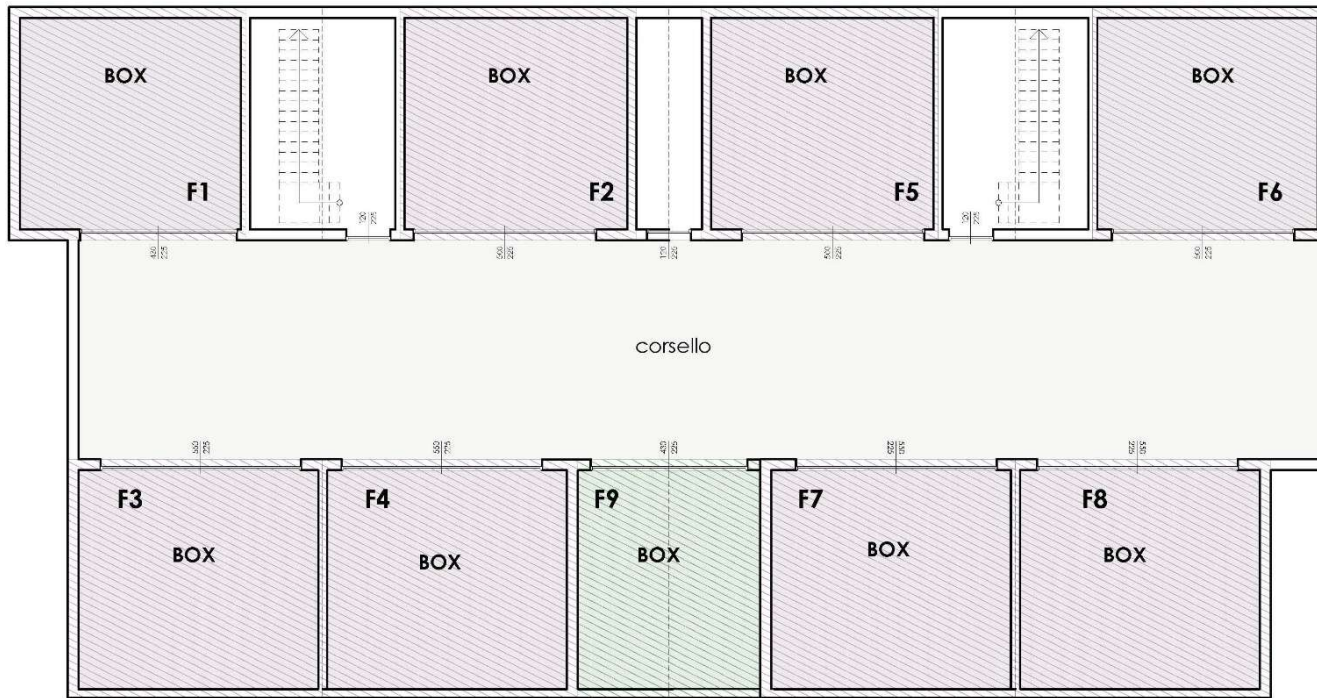
APARTMENT F7

APARTMENT F8



LOT F - FIRST FLOOR





LOT F - BASEMENT

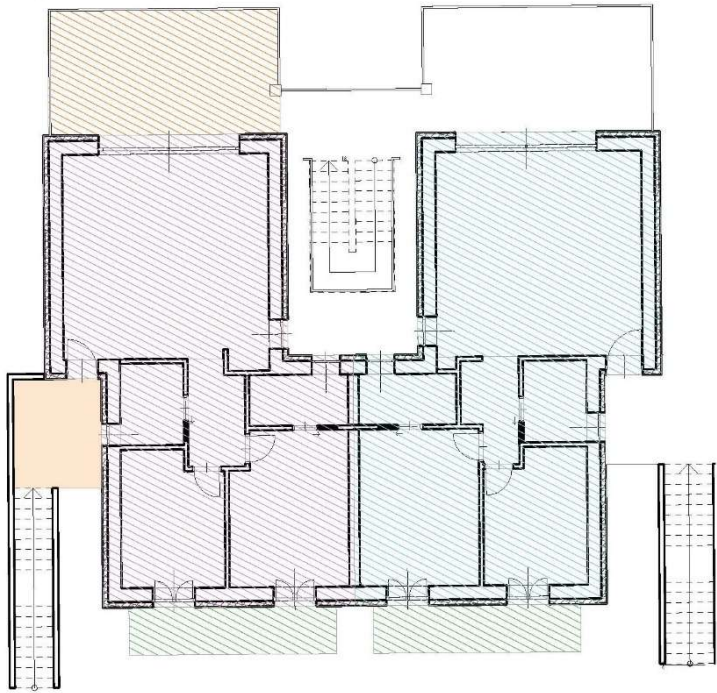




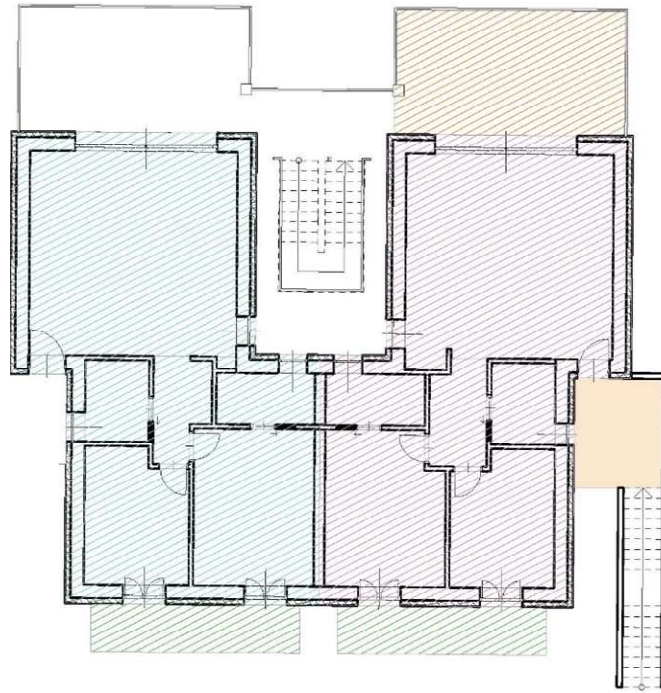
LOT G 



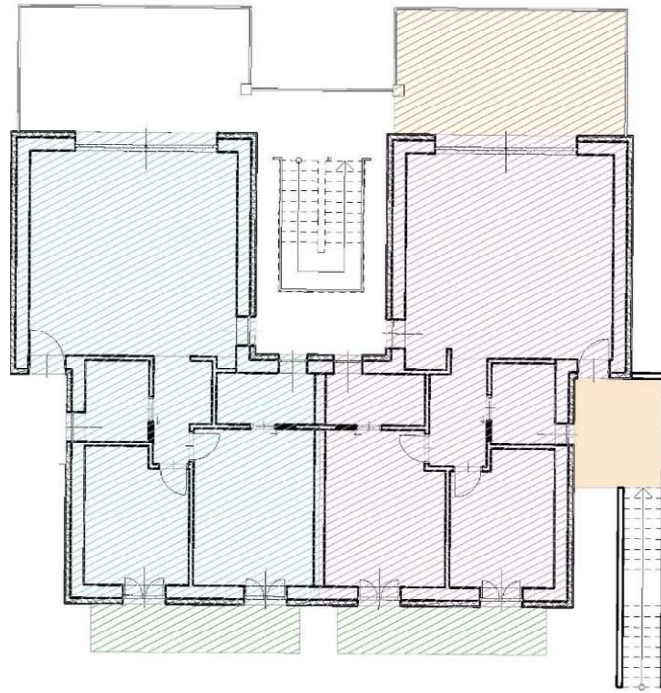
LOT G 



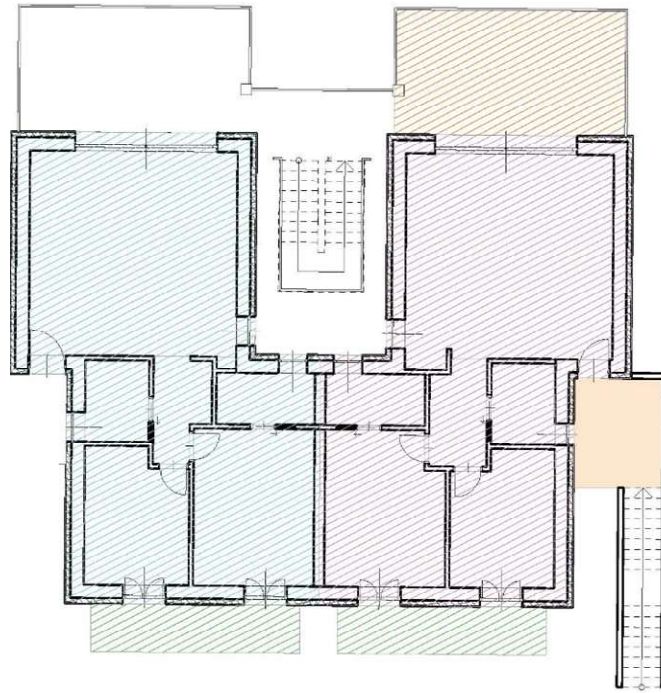
APARTMENT G1



APARTMENT G2



APARTMENT G3

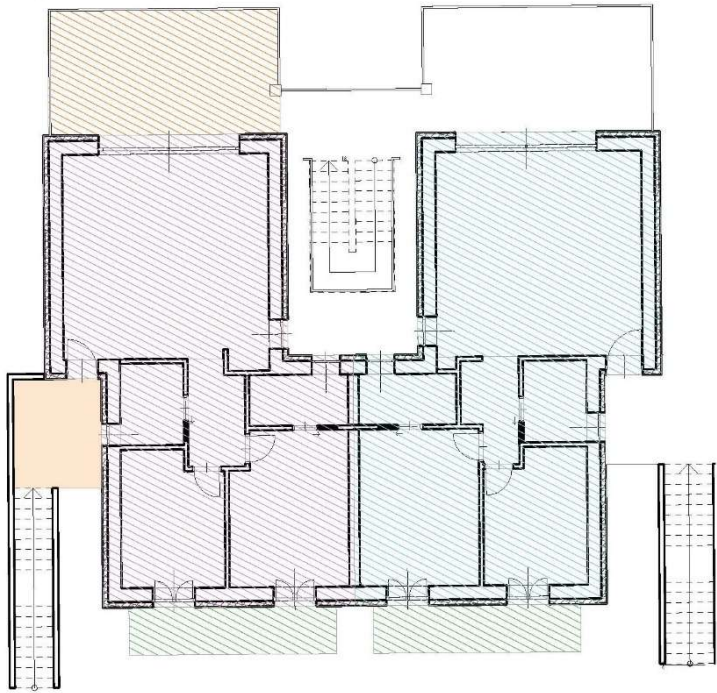


APARTMENT G4

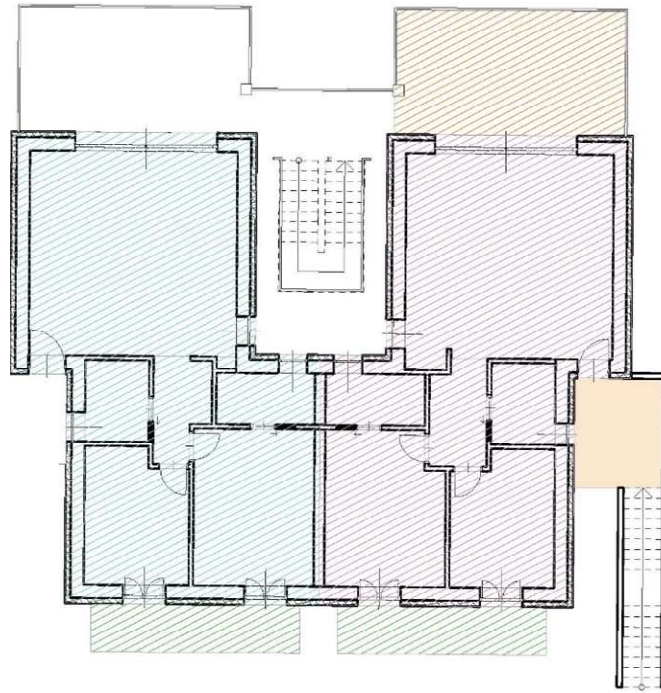


LOT G - GROUND FLOOR

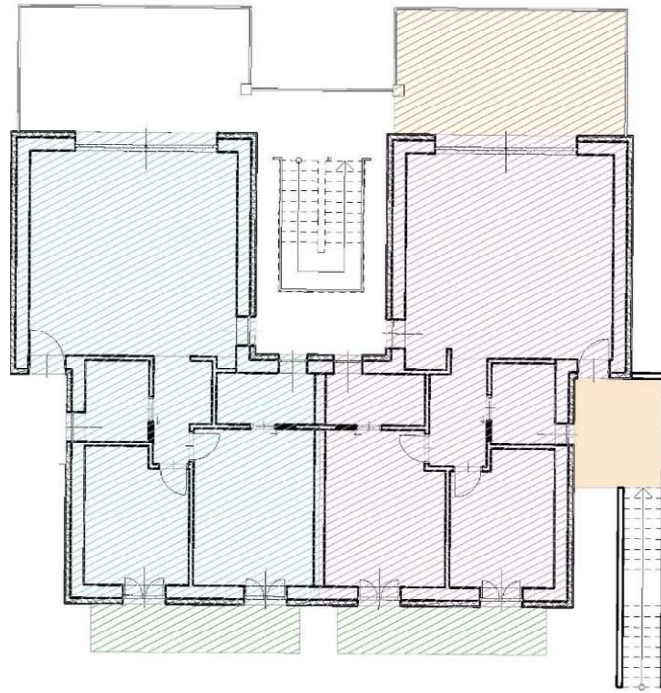




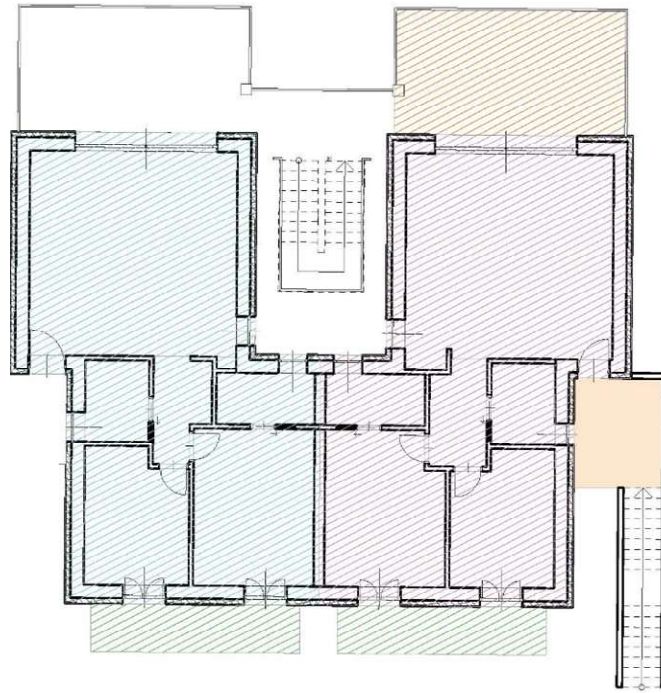
APARTMENT G5



APARTMENT G6



APARTMENT G7

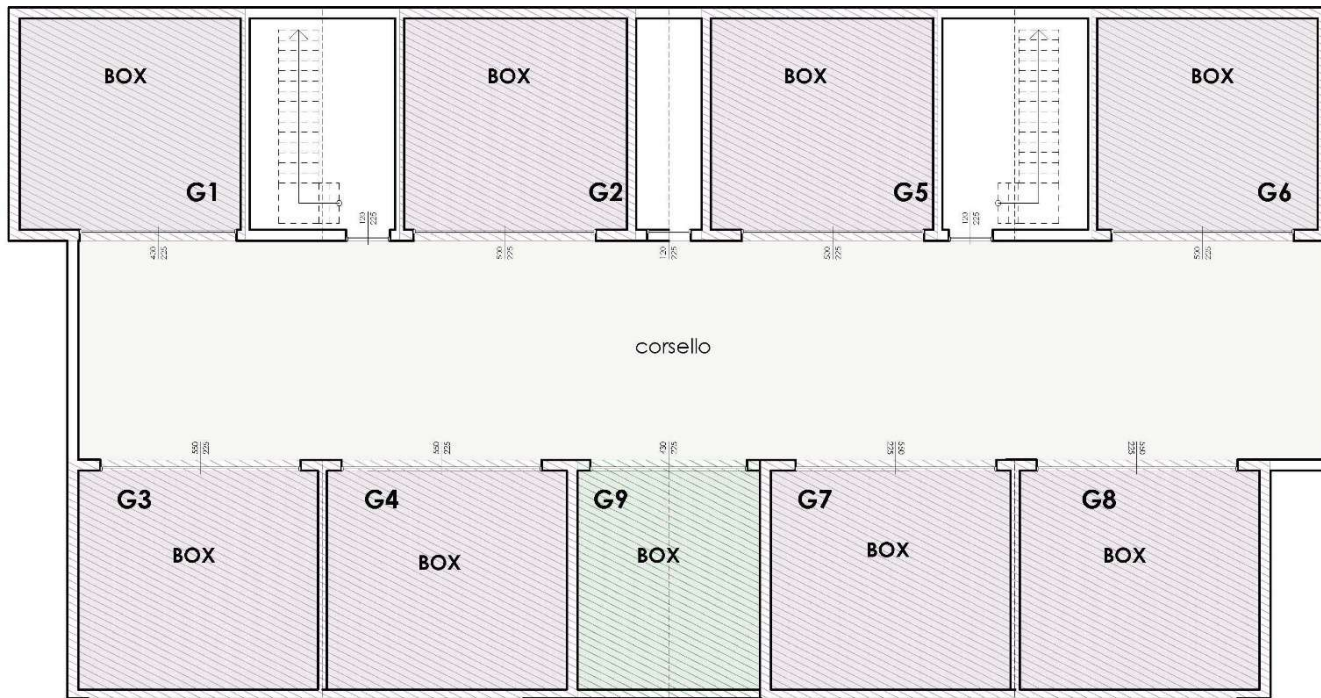


APARTMENT G8



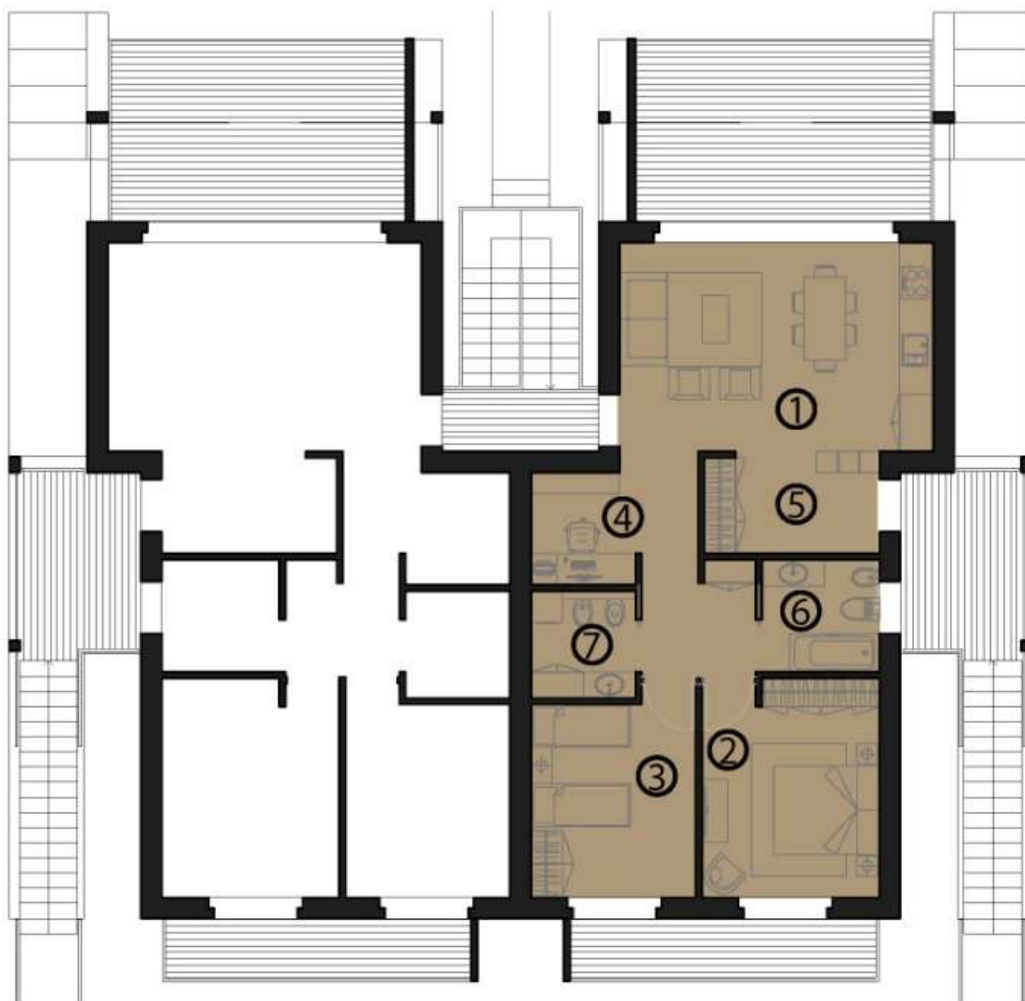
LOT G - FIRST FLOOR





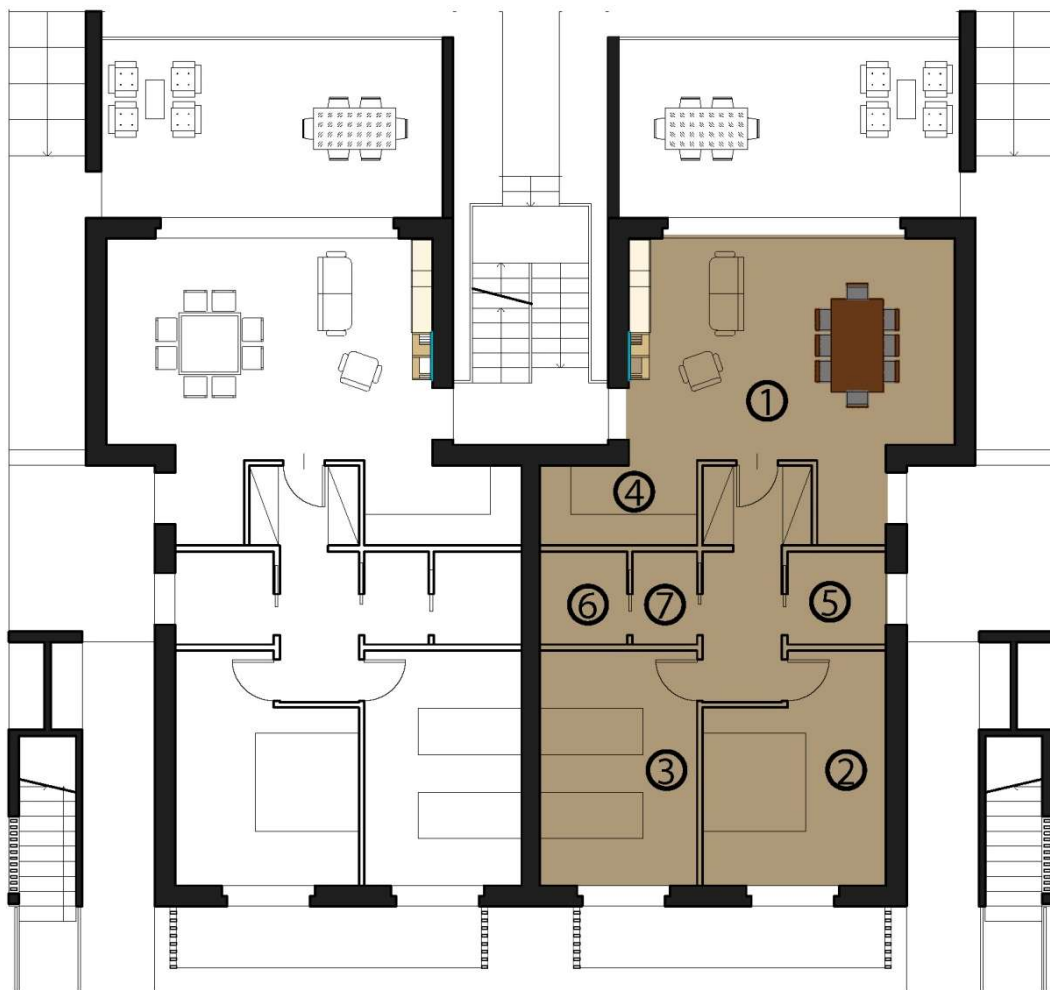


INTERNAL SOLUTIONS



GROUND FLOOR - THREE-ROOM APARTMENT





FIRST FLOOR - THREE-ROOM APARTMENT





LIVING SIMULATION





BEDROOM SIMULATION





CHILDREN'S ROOM SIMULATION





TERRACE SIMULATION





+39 340 3202139

+39 327 5605426

Project location: Via degli oleandri 2, Portese (San felice del Benaco)

Headquarter: Corso Zanardelli 32, 25121 Brescia, Italia

www.portesevillas.it © Bambù S.r.l.