

StaticSafe Flooring®

BY ALLIED FINISHES

ALLIED
FINISHES





ALLIED FISHES

ALLIEDFISHES.COM

About StaticSafe Flooring®

STATICSAFE FLOORING

StaticSafe Flooring eliminates electrostatic risks where safety, compliance, and reliability matter most.

StaticSafe Flooring is built to neutralise electrostatic risks by safely controlling, dissipating, and grounding static charges. Both systems are designed and installed to international benchmarks, including IEC 61340, AS/NZS 1020, and AS 1940, ensuring compliance in even the most regulated facilities. The build combines proven copper tape grids and conductive primers with high-performance resin finishes, delivering floors that are durable, chemical resistant, and hygienic.

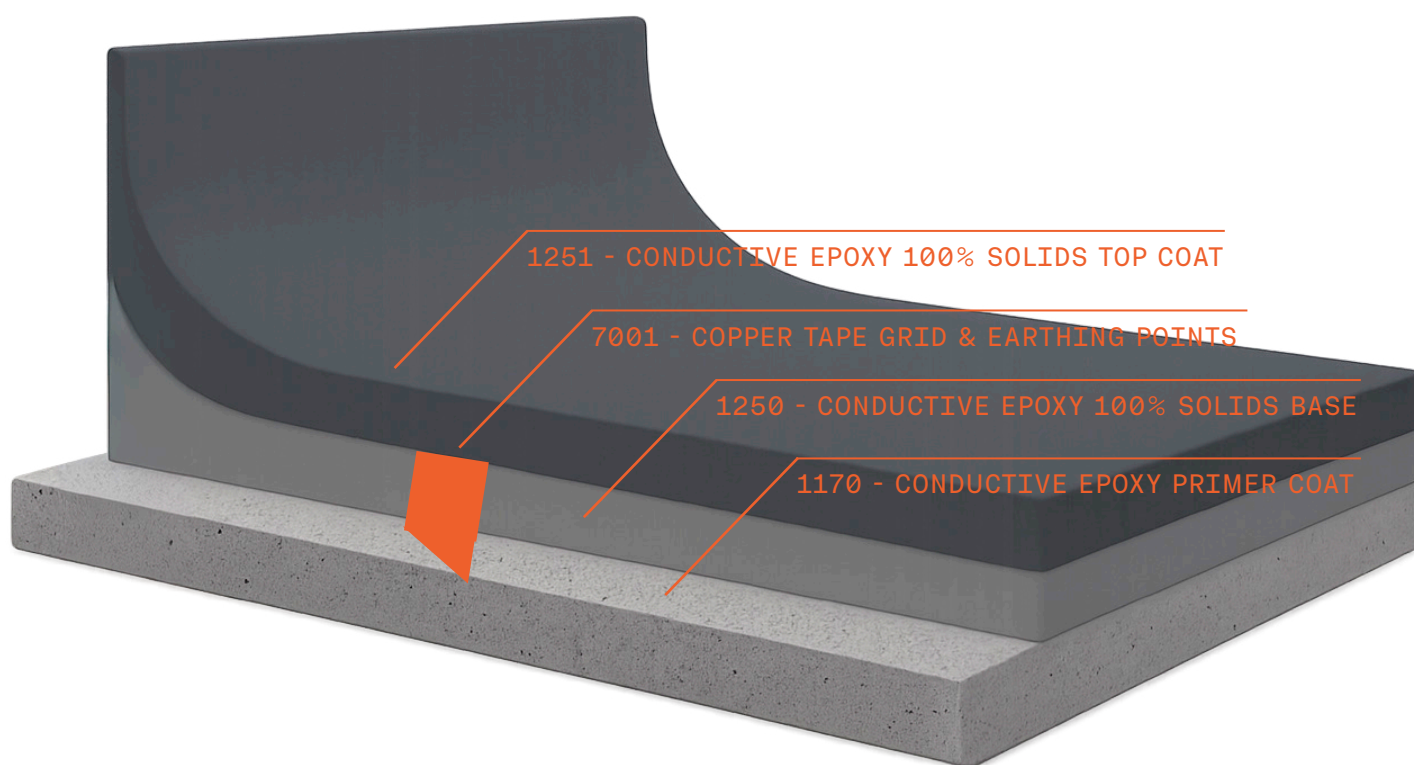
From large production halls to laboratories and packaging lines, StaticSafe Flooring provides long-term protection against disruption, equipment damage, and ignition hazards. Each installation is backed by resistance testing, certification, and full documentation, giving you confidence that safety and reliability are permanently built into your facility.

ENGINEERED SAFETY. ZERO COMPROMISE

StaticSafe Conductive

Maximum protection where ignition risks are highest.

Conductive flooring provides the fastest discharge path, with resistance values below $10^6 \Omega$. It is essential in zones where flammable vapours or liquids are present, or where ignition risks must be eliminated "so far as reasonably practicable" under OHS and EPA guidelines.



KEY ADVANTAGES

RAPID CHARGE DISSIPATION
IGNITION RISK CONTROL
MEETS AS/NZS 1020 & IEC 61340
HIGH CHEMICAL RESISTANCE

IDEAL FOR

FLAMMABLE LIQUID STORAGE & PROCESSING
HAZARDOUS PRODUCTION ZONES
MAJOR HAZARD FACILITIES
FUELS, SOLVENTS, OILS, ACIDS STORAGE

PRODUCT BUILD

1170 - CONDUCTIVE EPOXY PRIMER HIGH SOLIDS BASE COAT
1250 - CONDUCTIVE EPOXY 100% SOLIDS BASE COAT
7001 - COPPER TAPE GRID & EARTHING POINTS
1251 - CONDUCTIVE EPOXY 100% SOLIDS TOP COAT



STATISAFE FLOORING

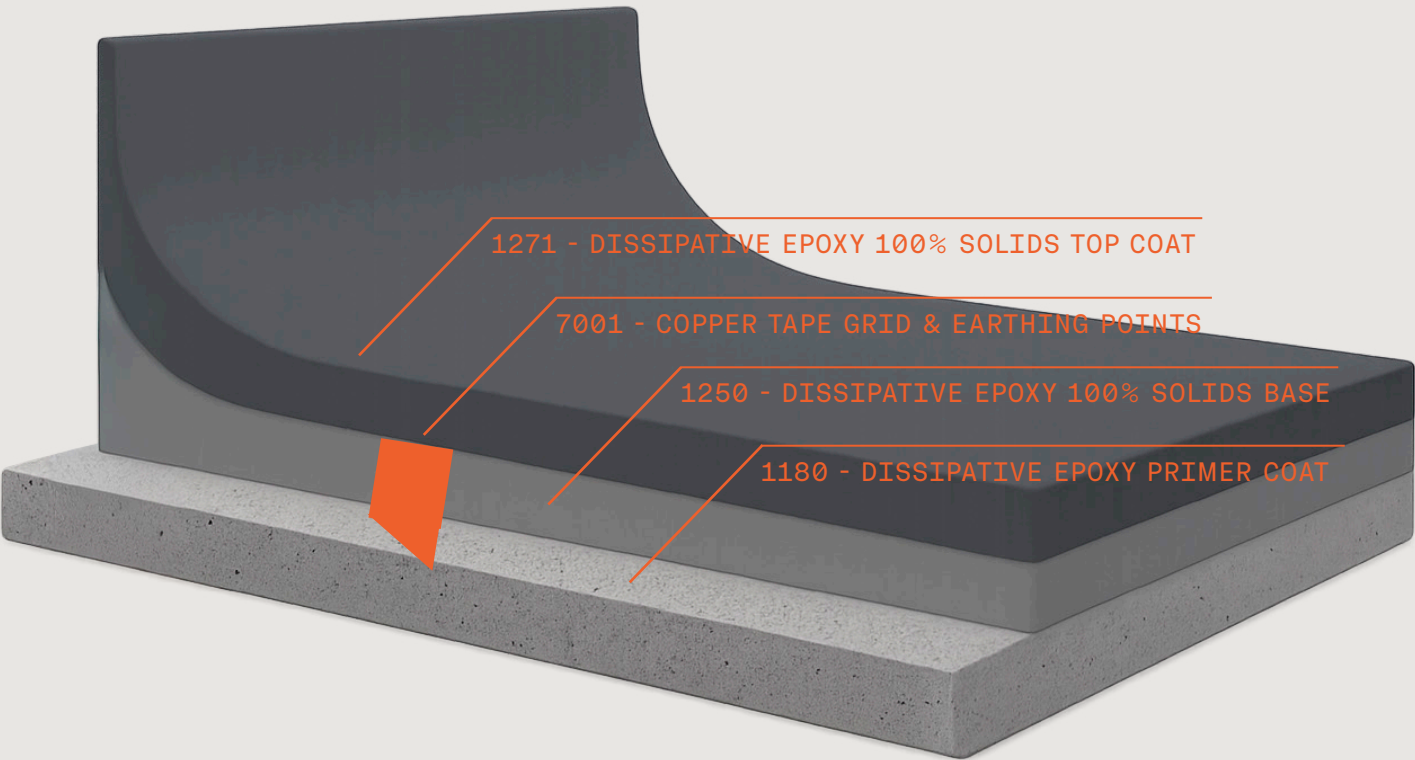
ENGINEERED SAFETY. ZERO COMPROMISE



StaticSafe Dissipative

Controlled static protection for sensitive operations.

Dissipative flooring slows the flow of static electricity, maintaining safe, controlled discharge rates. With resistance values between 10^6 – $10^9 \Omega$, it is ideal for ESD-sensitive production and packaging areas without flammable vapours.



KEY ADVANTAGES	CONTROLLED STATIC FLOW PROTECTS SENSITIVE EQUIPMENT COMPLIANT TO IEC 61340
IDEAL FOR	ELECTRONICS ASSEMBLY CLEANROOMS, PACKAGING AREAS GENERAL STATIC CONTROL
PRODUCT BUILD	1180 - DISSIPATIVE EPOXY PRIMER HIGH SOLIDS BASE COAT 1270 - DISSIPATIVE EPOXY 100% SOLIDS BASE COAT 7001 - COPPER TAPE GRID & EARTHING POINTS 1271 - DISSIPATIVE EPOXY 100% SOLIDS TOP COAT

Colours & Slip Resistance

StaticSafe Flooring is available in hygienic, industrial finishes. Standard conductive systems are supplied in a small range of colours, with extended colours available for large projects (>1,000 m²). Slip-resistant profiles can be tailored for pedestrian, wet, or high-traffic zones, ensuring both compliance and worker safety.

Colour Range



N35 - LIGHT GREY



N65 - GRAPHITE GREY



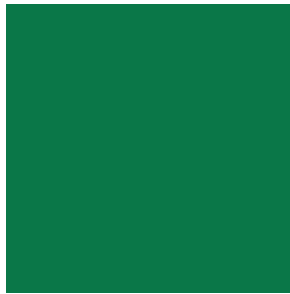
N61 - BLACK



R63 - RED OXIDE



G27 - HOMEBUSH GREEN



G13 - EMERALD GREEN

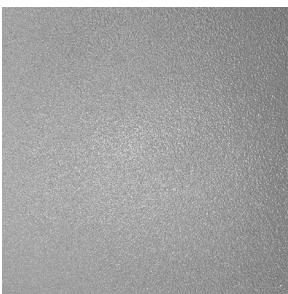


B41 - BLUEBELL

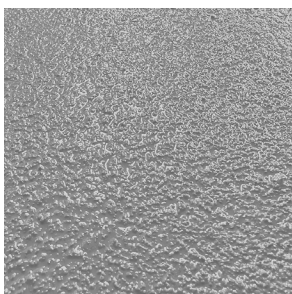


B24 - HARBOUR BLUE

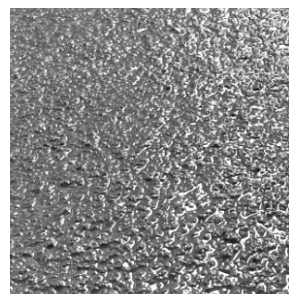
Slip Resistance Options



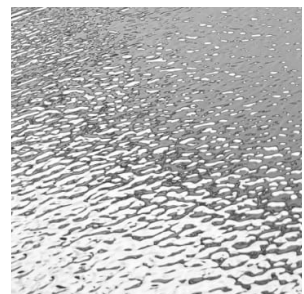
LIGHT NON-SLIP



MEDIUM NON-SLIP



HEAVY NON-SLIP



STIPPLE FINISH

Conductive or Dissipative?

Choose the one that matches your ignition and process risk.

Selection comes down to ignition risk and process sensitivity. If flammable liquids or vapours are present, specify Conductive ($<10^6 \Omega$) to remove static-spark ignition sources and align with IEC 61340 / AS 1940; otherwise use Dissipative (10^6 – $10^9 \Omega$) for stable static control in packaging, labs, and general production. Both classes require earthing points and verification testing to IEC 61340 at handover.

Selection Guide:

- ▲ If flammable liquids/vapours are present or ignition risk must be eliminated
→ Conductive ($<10^6 \Omega$)
- ▲ If no flammable vapours and you're protecting equipment/process from nuisance ESD
→ Dissipative (10^6 – $10^9 \Omega$)

Every StaticSafe system is installed and tested to ensure compliance with IEC 61340 and ANSI/ESD S20.20 standards. Key parameters include:

- ▲ Conductive Flooring: $<10^6 \Omega$ (rapid discharge)
- ▲ Dissipative Flooring: $\geq 10^6 \Omega$ and $<10^9 \Omega$ (controlled discharge)
- ▲ Testing: Resistance-to-ground, point-to-point, and continuity to earthing points
- ▲ Installation Notes: Grounding points done in a 3m x 3m grid; expansion joints mirrored and sealed; ESD footwear required for full compliance.





ALLIED FINISHES

ALLIEDFINISHES.COM

Lock in compliance.

StaticSafe Flooring delivers verified control of electrostatic risks in regulated environments. Specify Conductive ($<10^6 \Omega$) where flammable liquids/vapours or ignition risks exist; use Dissipative (10^6 – $10^9 \Omega$) for general ESD-sensitive areas. All systems are designed and tested to IEC 61340, aligned with AS/NZS 1020 and AS 1940, with resistance results documented at handover.

We keep the rollout simple: we assess your spaces, agree finishes and program, install the right class for each zone, test it, and hand you a clear compliance pack. We set expectations early on colours and budget (conductive costs more and has tighter colour options) so there are no surprises and multi-site standards stay consistent.

CONTACT US

1800 033 444

HELPDESK@ALLIEDFINISHES.COM

ALLIEDFINISHES.COM

ALLIED
FINISHES

