

ANNUAL ATRN CONGRESS

Contemporary Taxation Issues in Africa:

Shaping the Continent's Fiscal Space - Past, Present and Future



16 - 18 September 2025



Cape Town, South Africa

LOGISTICAL NOTE AND USEFUL INFORMATION





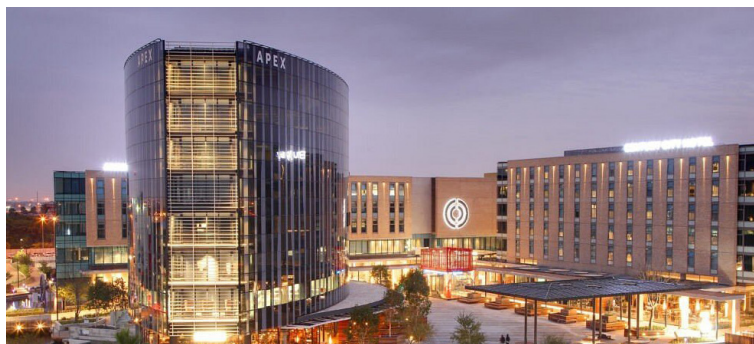
ATAF | ATRN ANNUAL CONGRESS

WELCOME

The African Tax Research Network (ATRN), a platform hosted by the African Tax Administration Forum (ATAF), is pleased to welcome participants to its 10th Annual Congress. This note provides key logistical information to facilitate travel and participation in the event.

1 DATE AND CONGRESS VENUE

The 10th Annual ATRN Congress will be hosted by the African Tax Administration Forum (ATAF) from 16 - 18 September 2025 at the Century City Conference Centre in Cape Town, South Africa. Below is the full overview of the Congress and associated activities: Information can also be found on the ATRN Website: <https://www.atrnafrica.org/-2025atrn-congress>



Dates	Activity
15 September 2025	Arrivals
15 September 2025	ATRN Advisory Board Meeting (Closed session)
16-18 September 2025	10th Annual ATRN Congress
19 September 2025	Departures

2 PARTICIPATION AND REGISTRATION

Participation is open to all. Registration is now open, and delegates can register on the ATRN Webpage: <https://www.atrnafrica.org/-2025atrn-congress>. The deadline for registrations is **22 August 2025**.

3 ACCOMMODATION



Cape Town offers a range of hotels to suit your budget and taste at multiple locations around the conference venue. Alternative accommodation can be arranged in the following hotels:



ATAF | ATRN ANNUAL CONGRESS

NAME OF HOTEL	WEBSITE	PHONE NUMBER
Urban Square	https://ccconferencecentre.co.za/accommodation/	+27 (0) 21 204 8000
Century City Bridgewater Apartments	https://ccconferencecentre.co.za/accommodation/	+27 (0) 21 204 8000
Axis Luxury Apartments	https://ccconferencecentre.co.za/accommodation/	+27 (0) 21 204 8000
Cape Town Marriott Crystal Towers	https://www.marriott.com/en-us/hotels/cptcm-cape-town-marriott-hotel-crystal-towers/overview/?scid=f2ae4-1279-0541f-24b-197a979c79310b0	+27 21-525 3888
The Residences at Crystal Towers	https://www.theresidencescapetown.com/	+27 21 552 0690
Stay Easy Century City	https://www.southernsun.com/stayeasy-century-city	+27 21 529 1100

4

TRANSPORTATION

Transfers to and from Cape Town International Airport will be provided by the host (ATAF) and the recommended hotels listed in section 3. Look for the ATRN Congress signage at the airport to access this service. Please upload your final itinerary on the registration link on the ATRN portal by 22 August 2025 to assist in arranging the airport pickups.

NOTE:

Participants will be responsible for booking their own accommodation and related expenses. Please note that shuttle services to and from these hotels to the conference venue will be provided. No shuttle services will be provided between the conference venue and any other hotel which is not listed above.

5

GENERAL INFORMATION AND ENTRY INTO SOUTH AFRICA

South Africa is located in the southern hemisphere of the African continent with Pretoria as the Administrative Capital and Cape Town as the Legislative Capital as the seat of Parliament. The country code is (+27) and the Local Time GMT +2:00, South African Standard time. Cape Town lies at the northern end of the Cape Peninsula, 30 miles (50 kilometres) at its southern boundary north of the Cape of Good Hope where the cold waters of the Atlantic Ocean on the west and the warmer Indian Ocean waters on the east meet. Cape Town is a modern, cosmopolitan city surrounded by nature.



Centred around Table Mountain, one of the New 7 Wonders of the world, the Mother City is known for its beautiful beaches, stunning biodiversity, award-winning food and wine, and sheer variety of experiences on offer. .

For more information about visa requirements please follow :

<https://www.dha.gov.za/index.php/applying-for-sa-visa> . In addition, you may be required to show proof of accommodation and return flight ticket for the duration of your stay.



ATAF | ATRN ANNUAL CONGRESS

6 TRAVEL HEALTH REQUIREMENTS

The South African Government announced on June 2022, that the COVID19- regulations were repealed. Travelers entering South Africa are no longer required to produce vaccination certificates or recent negative PCR tests. Nevertheless, participants are strongly encouraged to familiarise themselves with travel health requirements of the transiting country and South Africa.

Yellow fever vaccination may be required if arriving from a high-risk country. Please check to confirm if your country requires a yellow fever vaccination or certificate.

7 MEDICAL & EMERGENCY SERVICES

Cape Town has a number of reputable medical facilities. Should any delegate require medical attention or medication he/she should notify the event organizers would be able to either facilitate access or guide the delegate to the appropriate facility.

- It is advisable to have travel insurance.

The Nearest Medical Centre:

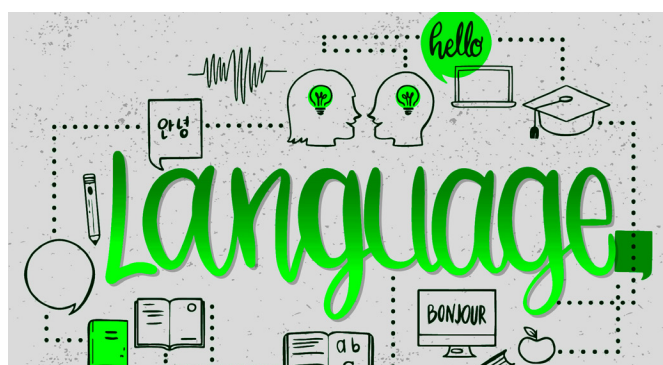
Intercare

+27 21 879 000

Centurycity@intercare.co.za

8 LANGUAGES

South Africa has eleven (11) official languages. **Afrikaans**, **isiXhosa** and **English** are the dominant languages spoken in Cape Town. Most people would be able to speak and understand English. The Conference will be conducted in ATAF's official languages namely English, French and Portuguese. Simultaneous interpretation will be provided.



9 WEATHER



In September, the average high-temperature is **18°C (64.4°F)**, and the average low-temperature is **10.9°C (51.6°F)** with the potential for rain 50% of the time. Cape Town is famous for its unpredictable weather and as such participants are encouraged to pack warm and cool weather clothing.

10 CURRENCY

The official currency in South Africa is the Rand (ZAR). The exchange rate is approximately **USD 1 = R18.12**. Major credit cards are accepted in most hotels; however, cash is also widely accepted.



ATAF | ATRN ANNUAL CONGRESS

11 ELECTRICITY

South Africa operates on a 230V supply voltage and 50Hz. South Africa plugs and sockets vary in style, though by far the most common are type M (three round pins in triangular pattern) and type C (two round pins. see the picture on the right)



12 SECURITY



Cape Town is generally peaceful and safe. However, guidance may be sought from hosts for advice when going places. Nevertheless, you are advised not to carry large amounts of money or other valuables, especially when going out at night. Also do not invite strangers to your hotel rooms unless you know them well.

13 TOURIST SITES

For those wishing to explore more of Cape Town, there are numerous tourist sites such as Robben Island, Table Mountain, Chapman's Peak and many beaches.

Please visit the tourism website, for more information: <https://www.capetown.travel/top-attractions/>



Robben Island



Chapman's Peak



ATAF | ATRN ANNUAL CONGRESS

14

CONTACT INFORMATION

For logistical support or queries, please contact:

Ms Bernadine Kermis –

Logistics Coordinator

Email address: bkermis@ataftax.org

Phone number: +27 66 488 0039

For Congress information, please contact:

Mr Frank Kalizinje –

ATRN Programme Specialist

Email address: fkalizinje@ataftax.org

Phone number: +265 999 67 72 22

