

Green Link Port Angeles and the Valley Creek Stormwater Park and Trails Project



This project has been funded wholly or in part by the United States Environmental Protection Agency under assistance agreement PC-01J95801-2 to the Washington State Department of Ecology. The contents of this document do not necessarily reflect the views and policies of the Environmental Protection Agency, nor does mention of trade names or commercial products constitute endorsement or recommendation for use.

Presentation

1. Introduction
2. What are the problems we need to solve?
3. GreenLink overview
4. Valley Creek Project selection
5. Development of the Master Plan
6. Valley Creek current conditions
7. Vision for the future
8. Next steps

Stormwater and fish passage barriers are destroying our most iconic species




Stormwater: Where It Flows, Everything Goes

When it rains, snows, or sleet, water hits hard surfaces and takes anything on that surface with it, through drains, pipes, and ditches to local rivers, lakes, and streams.



Where Stormwater Flows, Everything Goes

 mdt.mt.gov



What is Green Stormwater Infrastructure (GSI)?



GreenLink Overview





GreenLink Advisory Committee and Community Involvement

Where do our creeks go?





Daylighting Lower Valley Creek

Valley Creek Master Plan



Through the plan we looked at things like:

- Property ownership
- Historical and legal context
- Ecology
- Pedestrian and vehicle circulation
- Viewscales
- Creek routing alternatives
- And more!

Soroptimists and the Port spearheaded creation of the Valley Creek Estuary Park



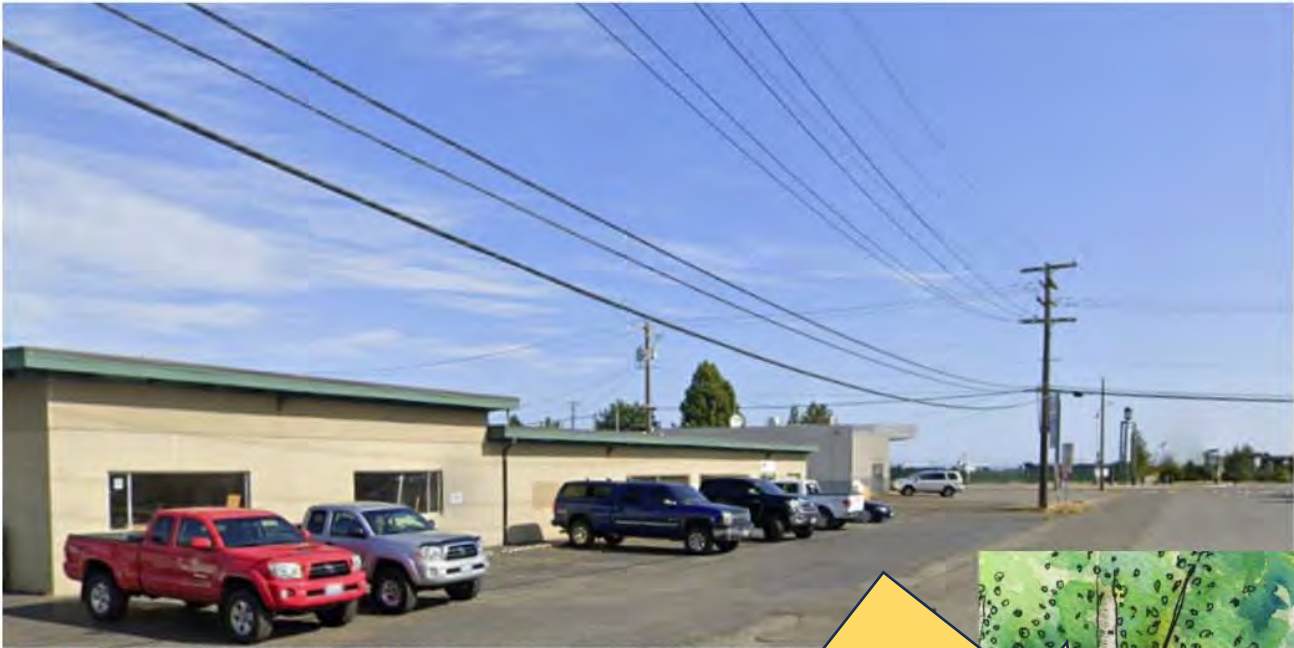
This effort generated a lot of community enthusiasm and spawned the idea of restoring Valley Creek.



City property acquisition map



The Vision



Next Steps

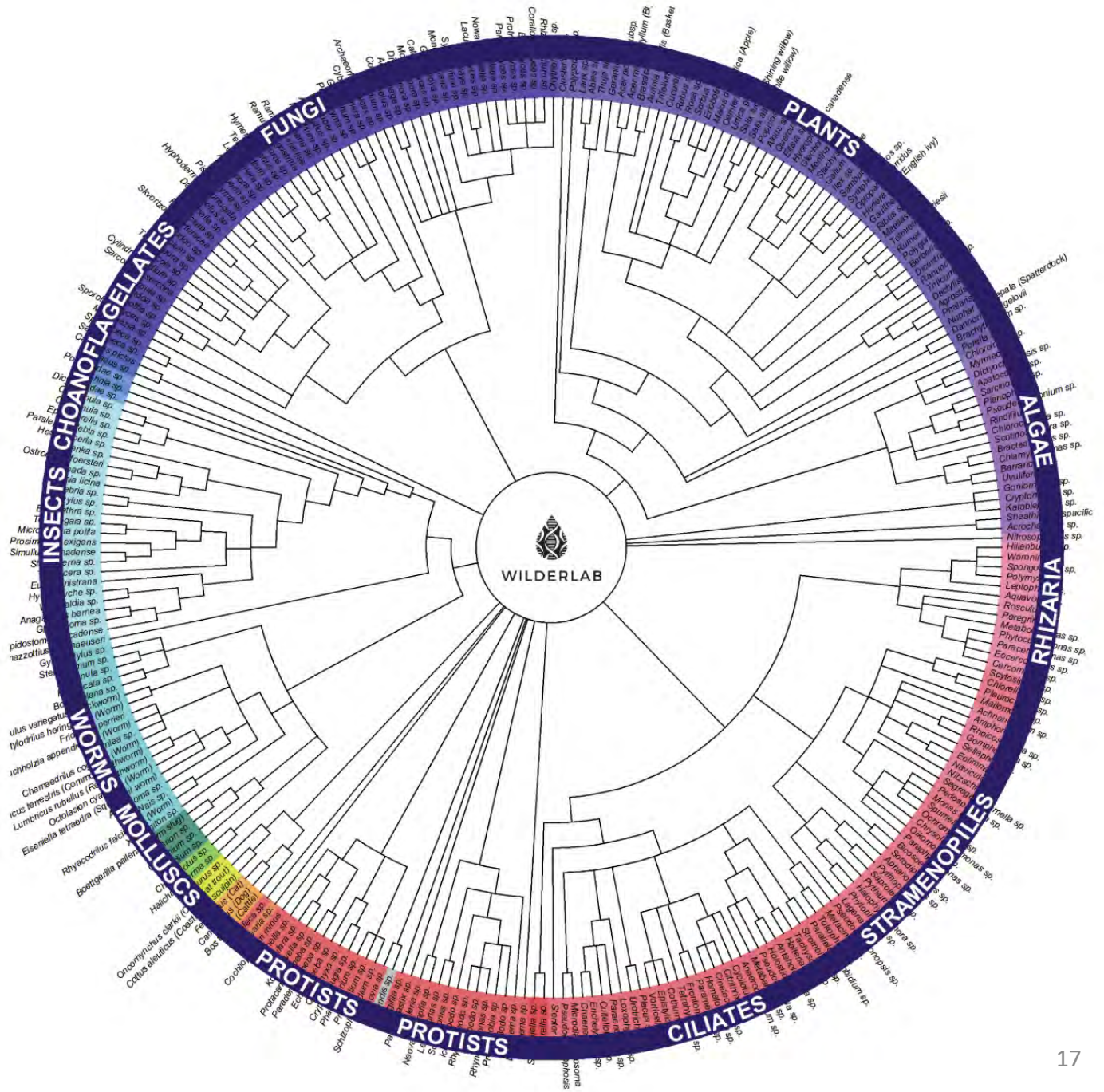
Community Outreach

Design Refinement

Economic Study

eDNA Study

Valley Creek Wheel of Life



What is **your** vision for Valley Creek?

Please share your thoughts about the project by emailing us at:

valleycreekcomments@futurewise.org



Valley Creek on the Verne Samuelson Trail