



K-Array's Anakonda Slithers to Center Stage at the November Hi-Fi Show 2025





The cutting-edge K-array Anakonda flexible line array loudspeaker emerged as one of the definitive showstoppers at this year's November Hi-Fi Show, held at the Makati Diamond Residences, 9th floor, Room 925.

This groundbreaking audio solution captured significant attention from audiophiles and industry professionals alike, thanks to its revolutionary design and exceptional performance capabilities.



NOVEMBER
HiFi
SHOW

The Anakonda:

A Revolutionary Acoustic Solution



K-ARRAY
Unique Audio Solutions

KGEAR
Smart Audio Solutions

KSCAPE
Merging Senses



The Anakonda series, which also includes the KAN200 and KAN200+, was specifically engineered to be an elegant problem-solver for complex acoustic environments. These sleek, serpentine loudspeakers defied the traditional limitations of bulky speaker cabinets, offering a highly adaptable form factor where good intelligibility, ultra-reliability, and a clean aesthetic were paramount.

The KAN200+8 model itself was a testament to innovative Italian design and engineering. These two-meter long loudspeakers come with 16 x 1" drivers that deliver a max power of 300W at 8Ω impedance. Integrated male and female Speakon NL4 connectors hide all connections inside the body of the speaker. And by using two amplifier channels with the dedicated K-ANLINK accessory, you can extend your Anakonda system to up to 4 units – 8 meters – which creates an elegant, seamless line of continuous sound. Its dedicated presets work on a wide frequency range and can be used as an audio system in combination with K-array subwoofers.





The Premier Hi-Fi Gathering: A-Year Legacy





The K-Array Anakonda's stellar presence was part of a larger celebration as the Philippines' largest and most significant Hi-Fi/Vidfi exhibition marked its 23rd anniversary of promoting High Fidelity sound reproduction.

This year's event relocated to a sophisticated new venue, the Makati Diamond Residences. Located along Legazpi Street, this luxurious serviced apartment complex in the heart of the Makati Central Business District provided an elegant backdrop for the premium audio-visual showcase, allowing exhibitors to demonstrate their gear in a refined, real-world setting.



Held over two days in November— November 15 to 16, the highly anticipated show was a resounding success, attracting thousands of visitors and drawing an estimated representation of up to 350 audio brands. Attendees experienced a massive display of the latest and greatest in sound technology across more than 60 dedicated rooms. The exhibition's diverse offerings catered to every corner of the audio community, showcasing:

- ◆ High-end 2-channel Stereo Audio systems
- ◆ Immersive Home Theatre setups
- ◆ A vibrant Portable Audio segment
- ◆ The warm tones of Vacuum Tube amplifiers
- ◆ An expansive selection of Vinyl records and CDs available for purchase

Overall, the annual November Hi-Fi Show cemented its status as a vital pillar in the Asian audio scene, providing a crucial platform where groundbreaking technologies, such as the K-Array Anakonda, made their highly anticipated showcase to the Filipino market.



K-array Lyzard-KZ I: The Miniature Marvel Redefining Discreet Audio at the November Hi-Fi 2025





The K-array Lyzard-KZ1 I, the smallest member of the Lyzard mid-high micro-loudspeaker range, represents a paradigm shift in high-fidelity audio integration.¹ Its revolutionary, virtually invisible form factor, coupled with astonishing performance, continues to captivate the Philippine audio market, thanks to the tireless efforts of its local principal, WESTCO AV. As the November Hi-Fi 2025 show approaches, the KZ1 I stands as a testament to how cutting-edge Italian engineering solves the perennial challenge of marrying uncompromising sound quality with pristine aesthetics.

Lyzard-KZ I: High-Output Audio with Seamless Physical Integration



The Lyzard-KZ1 I is a true engineering marvel. Encased in a miniature, ultra-resistant milled aluminum enclosure measuring a mere 2.2 times x 3.7 x 1.1 and weighing just 21g, this point source loudspeaker achieves uncompromised audio despite its size. It features a single 0.5" long-excursion neodymium magnet transducer that delivers exceptional clarity and minimal residual noise. The speaker provides a wide 140° horizontal and vertical coverage and a frequency response from 500 Hz up to 18 kHz, pushing a peak SPL of 86 dB. This impressive acoustic output is achieved within a body designed to be discreetly integrated into the most luxurious and design-conscious spaces.





Luxury Finishes and Installation Simplicity





A key feature of the Lizard series is its adaptability to any aesthetic requirement. Beyond the standard semi-matte black or white, the speaker can be finished in any RAL colour and offers a range of premium platings, including Polished Aluminium, 24K Gold, Rose Gold, and the highly coveted Antique Gold.

Installation is also ingeniously simple. The front magnetic grille, removable with an included small magnet knob, offers quick access to the fixing point, saving valuable time for integrators. Furthermore, the rear features a standard two-pole screw euro-block connector, eliminating the need for specialized tools. For seamless integration, the Lizard KZ1R I variant is designed with a metallic spring clip specifically for fast and easy recessed in-wall installation, making it perfect for retail, hospitality, museums, and high-end residential projects where maintaining aesthetic purity is paramount.





NOVEMBER
HiFi
S H O W

WESTCO AV:

Bringing K-array Innovation to the Philippines



K-ARRAY
Unique Audio Solutions

KGEAR
Smart Audio Solutions

KSCAPE
Merging Senses



As the appointed distributor for K-array in the Philippines, WESTCO AV has championed the brand's innovative audio solutions, including the Lizard-KZ1 I. WESTCO AV is the essential link, providing local expertise and support for these high-performance systems. The Lizard must be paired with K-array's dedicated Truffle or Rumble subwoofers and driven by a Kommander amplifier to complete a full-frequency audio system. WESTCO AV ensures that Philippine clients, from top architects and engineers to high-end residential customers, receive the full benefit of K-array's design and sound quality, transforming spaces with an audio presence that is heard, not seen.



A Look Ahead to the November Hi-Fi 2025





The anticipation for the November Hi-Fi 2025 show, held at the Makati Diamond Residences, highlights the Filipino market's appetite for premium, innovative audio technology. This annual event, a vital platform for the Asian audio scene, offers WESTCO AV and K-array a prime opportunity to demonstrate the compelling mix of discretion and performance offered by the Lizard-KZ1 I and its complementary components. The show is set to be a significant gathering, underscoring the shift toward sleek, powerful, and aesthetically sensitive audio solutions—a space where K-array and WESTCO AV are the definitive leaders.



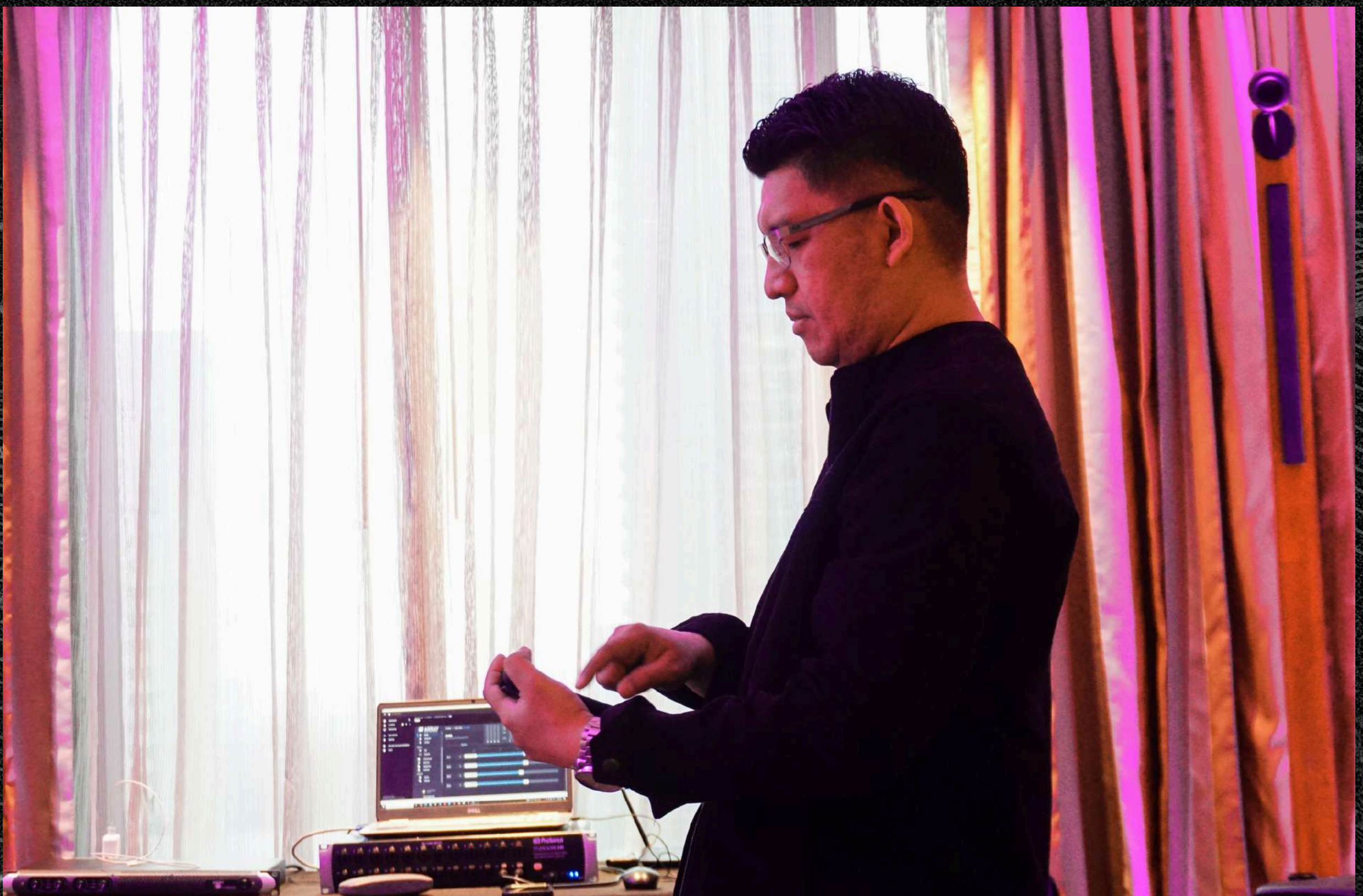
Invisible Sound, Impeccable Design:

The Recessed Lyzard-KZ14R I Makes a Statement at November Hi-Fi 2025



Don't let the size fool you.

This speaker is smaller than a credit card, yet its sound is anything but small. While you might already be familiar with the revolutionary Lizard-KZ1 I, today we are shining a spotlight on its slightly larger—but equally discreet—sibling: the **Lizard-KZ14 I**. This is a speaker that doesn't just "hide well"—it stands out by practically disappearing.



A Showstopper at November Hi-Fi 2025



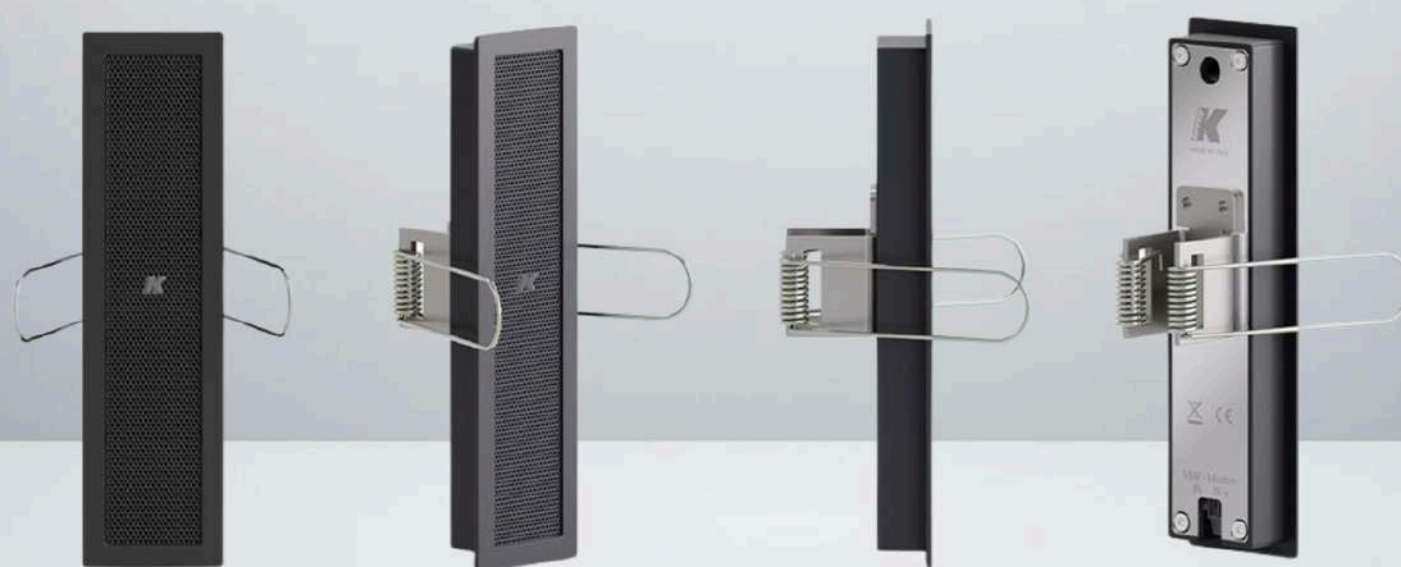


The device's capabilities were put to the ultimate test during the **November Hi-Fi 2025**, held this past November 15 and 16 at the Makati Diamond Residences. Amidst a showcase featuring the latest innovations from K-array, K-gear, and Frog-is, the KZ14 I completely baffled eventgoers.

Recessed into a black PVC fixture, the device blended so perfectly with the surroundings that listeners were left confused about the source of the audio. Unable to gauge the device's true stature due to its high invisibility, attendees were immersed in a soundscape that seemed to emerge from the architecture itself, underscoring the Filipino market's growing appetite for premium, design-conscious technology.



Introducing the Lyzard-KZ14R I



Heading



Taking this discretion even further is the newest evolution of the model, the **Lyzard-KZ14R I**. This iteration features a metallic spring clip designed specifically for fast, flush in-wall installation. It is ideally suited for retail environments, museums, and luxury residences where wall protrusions are unwanted. The KZ14R I allows venues to maintain strict aesthetic standards without compromising on high-fidelity audio quality.

Italian-made and subjected to rigorous quality control, the system is designed for ease of use and longevity. It features a rear two-pole screw euro-block connector to streamline wiring and a magnetic front grille that can be removed instantly for maintenance. To match any décor, the Lyzard-KZ14R I is available in standard semi-matte black or white, custom RAL colors, or premium finishes such as polished aluminum, rose gold, and 24K gold.

Deceptive Dimensions, Massive Performance



Despite its miniature stature—measuring just **2.8 x 10.6 x 1.1 cm** and weighing a mere 59 grams—the ultra-resistant milled aluminum enclosure houses four long-excursion neodymium magnet transducers. This makes it the smallest model to feature PAT array technology, delivering a vertical coverage of 40° and a wide horizontal coverage of 140°.

With a frequency response of **500 Hz to 18 kHz** and a peak SPL of 98 dB, it provides flawless intelligibility and clear audio reproduction with minimum residual noise. To achieve this full-frequency soundscape that defies the speaker's physical size, the Lizard acts as part of a complete ecosystem: it is paired with K-array's dedicated Truffle or Rumble subwoofers and driven by Kommander amplifiers to deliver the low-end power and signal processing required for such a compact driver.

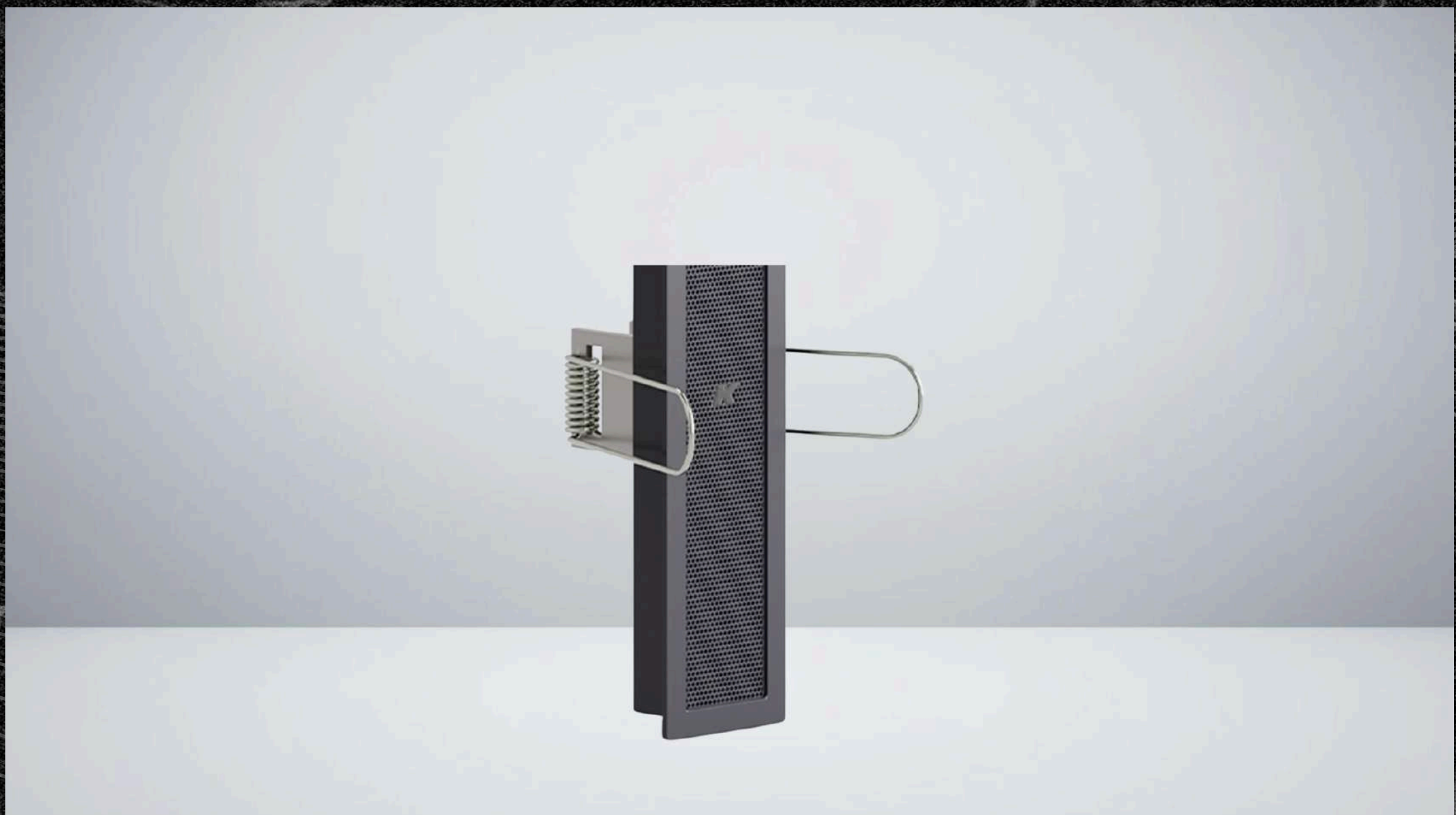


Application: The PVT Experience



The real-world impact of the Lizard-KZ14R I is perfectly illustrated at PVT, an ultra-luxury, members-only dining destination perched on the 40th floor. With breathtaking 360° city views and distinct zones like Cloudscape, Omakase, and Vine, the venue required an audio solution that could match its sophisticated ambiance without intruding on the décor.

The installation team demonstrated that only discreet speakers offering true array directionality would suffice. In the Cloudscape area, ten slender Lizard KZ14R arrays—paired with Rumble KU26 subs and powered by the Kommander KA28—were installed to deliver rich, enveloping sound that does not clutter the elegant bar and dining space. Similar KZ14R setups were utilized in the Vine and Omakase zones to ensure tailored acoustics for their specific culinary experiences. This installation underscores why the KZ14R I is the ideal solution for environments where visual aesthetics and acoustic clarity must coexist in harmony.



WESTCO AV: Defining Invisible Audio



As the exclusive distributor for K-array in the Philippines, WESTCO AV serves as the essential link between Italian innovation and Filipino application. By showcasing how the Lizard-KZ14R I disappears into architectural surfaces while delivering powerful sound, WESTCO AV continues to champion the shift toward sleek, aesthetically sensitive audio solutions.

Their role goes beyond simple distribution; they provide the local expertise required to deploy these high-performance systems, ensuring that clients—from top architects and engineers to luxury homeowners—receive a complete solution. Whether it is for a high-rise dining venue or a private residence, WESTCO AV ensures that the "heard but not seen" philosophy is executed with technical precision.





Frog-is FI-M50: Compact Precision for the Small Studio





The world of audio production and critical listening often requires a balance between power and fidelity, especially in smaller acoustic spaces. For those working within these realities, Frog-is presents the FI-M50 Compact Studio Monitor.

The November Hi-Fi 2025 event at the Makati Diamond Residences, recognized as the country's largest and longest-running hi-fi exhibition, serves as a convergence point for the latest in high-fidelity innovation. While the exhibition features a full spectrum of audio gear, Frog-is is utilizing this platform to present the FI-M50 as a dedicated tool engineered for accurate nearfield monitoring, keeping the focus strictly on the integrity of the sound it produces.

The FI-M50 is designed for a faithful reproduction of the source material—a necessary foundation for anyone who requires their sound to remain uncolored.





Engineering for Fidelity





By carefully selecting parts such as a high-performance Class-D amp, a highly resilient MDF cabinet, woofers, and soft dome tweeters, the FI-M50 delivers a detailed sound despite its small size. This component selection provides efficient, clean power and an inert enclosure, allowing the drivers to perform clearly. The pairing of a 5.5" woofer and a 1" dome driver ensures both low-frequency presence and clear high-frequency reproduction.

The pursuit of accuracy extends to the low end. The rear side wide port reduces air turbulence noise in the bass reflex port, designed to provide clear and accurate bass. The FI-M50 aims for a flat response across all bandwidths without coloring the original sound.





Adapting to Your Acoustic Reality





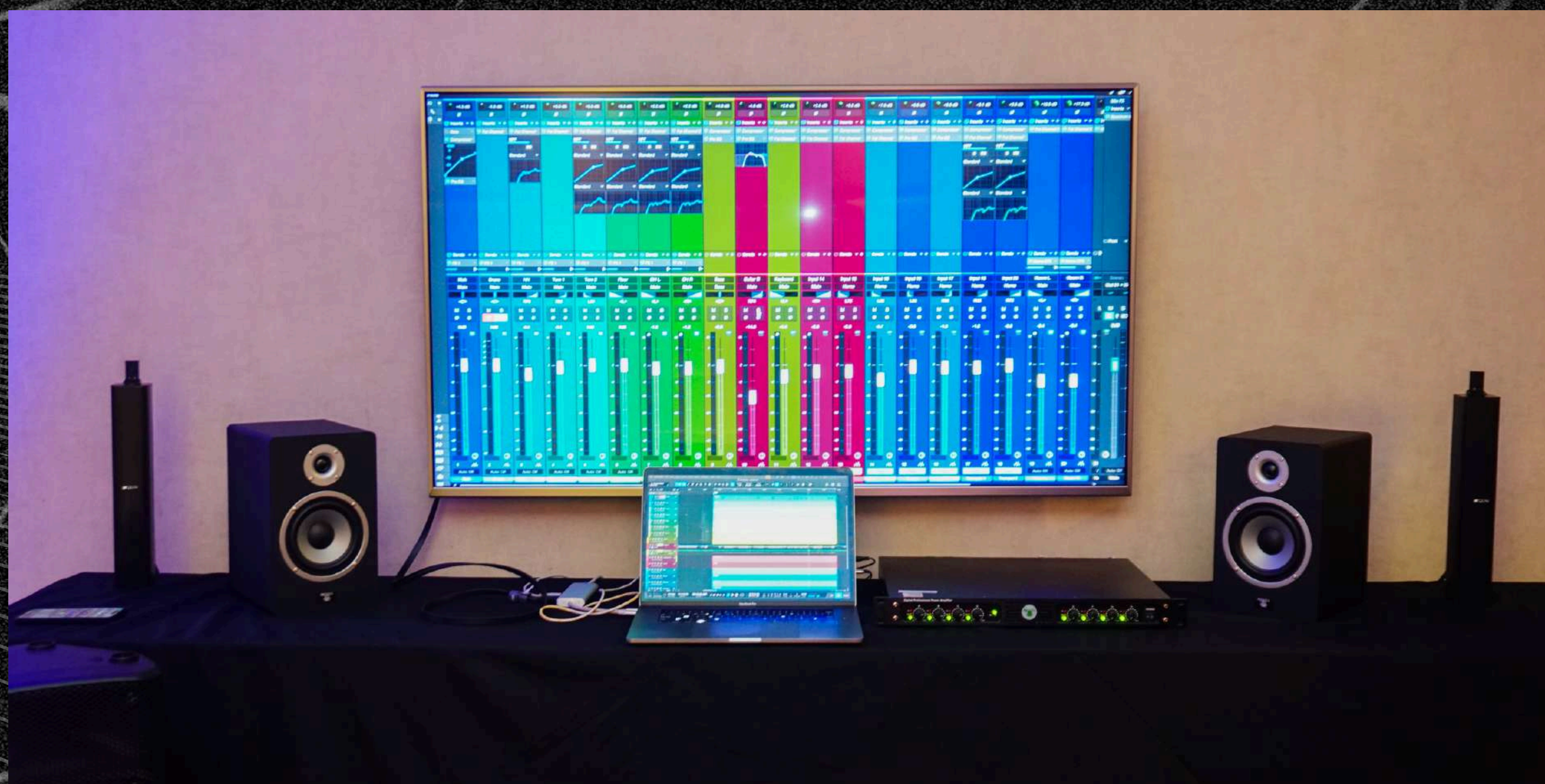
The sound produced by speakers is sometimes affected by the surrounding environment. The FI-M50 recognizes that ideal acoustic treatment is often a luxury. Therefore, the rear panels of the FI-M50 are equipped with ROOM CONTROL and HIGH TRIM functions that allow you to make adjustments to achieve an optimal sound for any environment, such as reducing exaggerated low-end that can occur when speakers are placed next to walls.

The FI-M50, with its compact and light weight system, ultra-wide dispersion for a larger sweet spot, and built-in overload protection circuitry, stands ready as a versatile tool. Its Input and controls are designed to fit any use case, making it a relevant piece of equipment for audio engineers, producers, artists, and music production environments.





WESTCO AV and Frog-is: A Dynamic Partnership for Pro Audio





WESTCO AV is a proud distributor of Frog-is, the innovative pro-audio company that is redefining sound solutions in the market. This partnership merges European R&D (based in Florence) with efficient Asian manufacturing, resulting in a comprehensive line of professional audio equipment—including the acclaimed FP-series self-powered speakers, amplifiers, and mixers.

Through this alliance, WESTCO AV is the authorized distribution and after-sales service provider for Frog-is, ensuring that clients like sound engineers and venue operators can access original, reliable products. The core mission of the partnership is to deliver high-quality, excellent audio at an unprecedented value, allowing customers to meet acoustic goals even with restrictive budgets. WESTCO AV is delighted to bring this quality and value to their A/V portfolio.





The November Hi-Fi 2025 Event





The Frog-is FI-M50 was presented at the November Hi-Fi 2025 show. The event—which brought together high-fidelity sound systems, speakers, and innovative audio technology—was the stage for the FI-M50 to demonstrate its capabilities to an audience of audiophiles, producers, and industry professionals.

By attending the November Hi-Fi 2025, visitors had the opportunity to experience first-hand the FI-M50's complete feature set: its compact system, its ultra-wide dispersion for a larger sweet spot, its overload protection circuitry, and its versatile Input and controls that fit any use case—from professional music production and audio engineering to critical listening.

The Frog-is FI-M50 offers a blend of precision and power in a portable package, positioning it as a capable tool for producers, engineers, and artists. Its presence at the November Hi-Fi 2025 confirmed its availability and features within the audio solutions market.





Aluminum-carved Tornado-KT2 Touched Down at the November Hi-Fi Show 2025

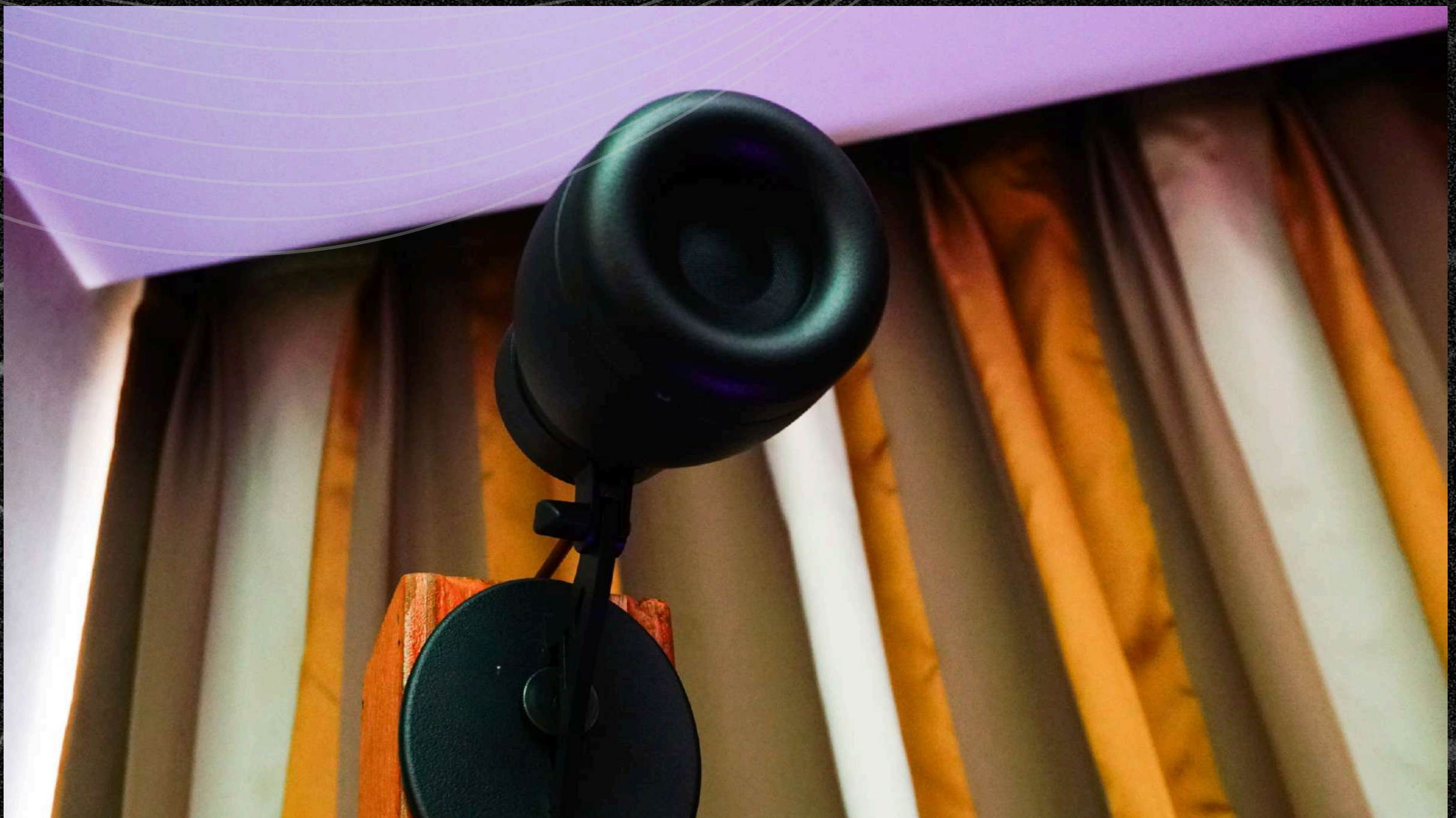




Last week, the prestigious **November Hi-fi Show 2025** was held for two days at the Makati Diamond Residences, 9th floor, Room 925— giving music enthusiasts the ability to enjoy good music and explore products like headphones and speakers from different brands. One among the products is **K-array's Tornado-KT2**, which made its touchdown during the said event. The speaker is part of the K-Array Tornado series, a remarkable achievement in professional audio design, establishing itself as an exceptional choice for high-quality distributed sound systems, particularly where aesthetics and space constraints are paramount.



Design and Construction Excellence





At its core, the Tornado is a **miniature, 2-inch point source speaker** that delivers surprising performance relative to its size. A defining feature is its sophisticated physical construction: the speaker is housed in an **aluminum enclosure meticulously carved from a single metal block**.

This choice of material and unique manufacturing process serves a dual purpose: it creates a **highly durable, visually discreet form factor** suitable for architectural integration, and it efficiently disseminates the heat produced by the loudspeaker, thereby maximizing its performance and longevity. The Tornado series is explicitly designed for **space-sensitive and architectural installations**, making it nearly invisible in venues like restaurants, museums, theaters, or concealed spaces in houses of worship (e.g., chancel steps).

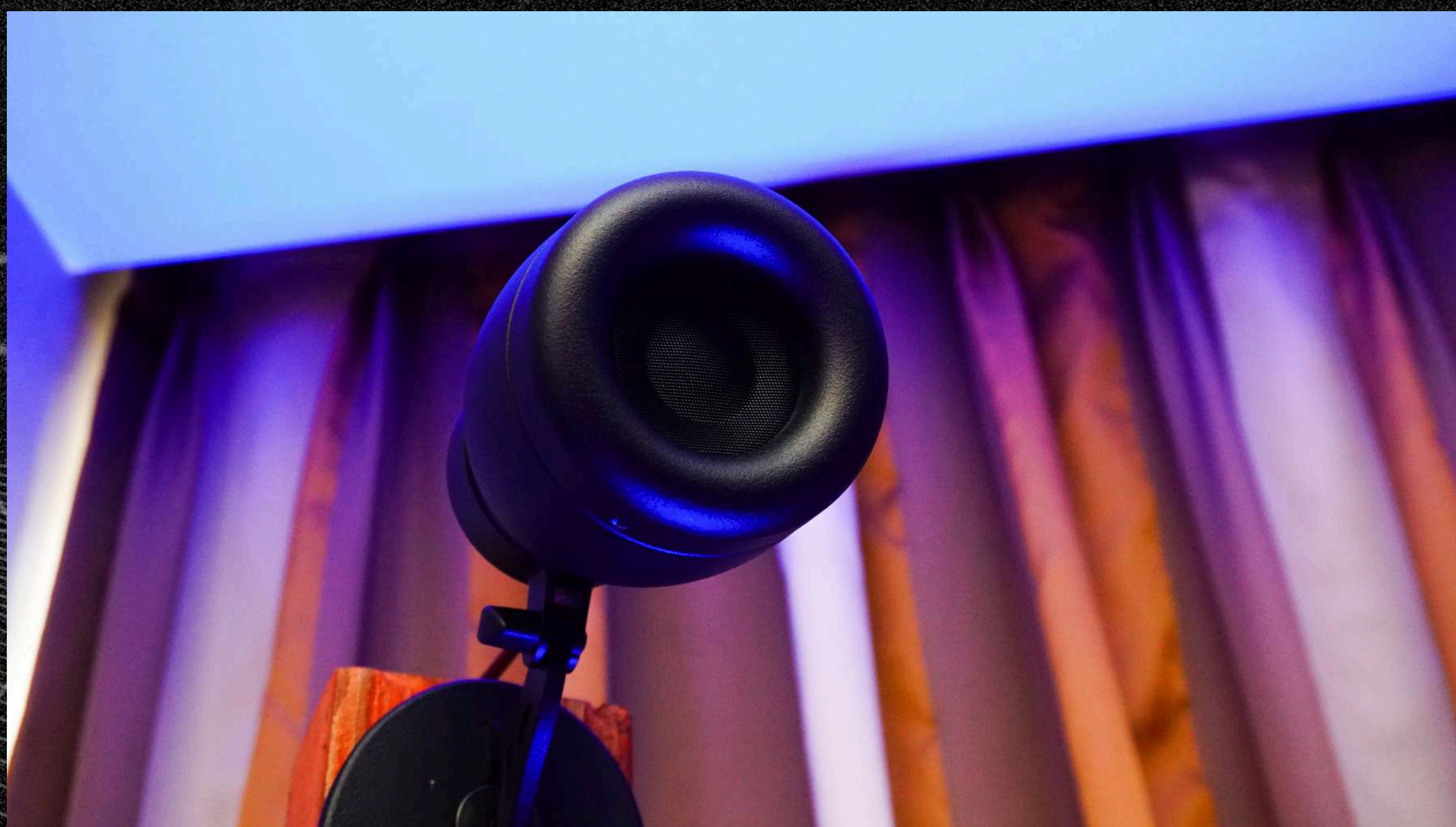


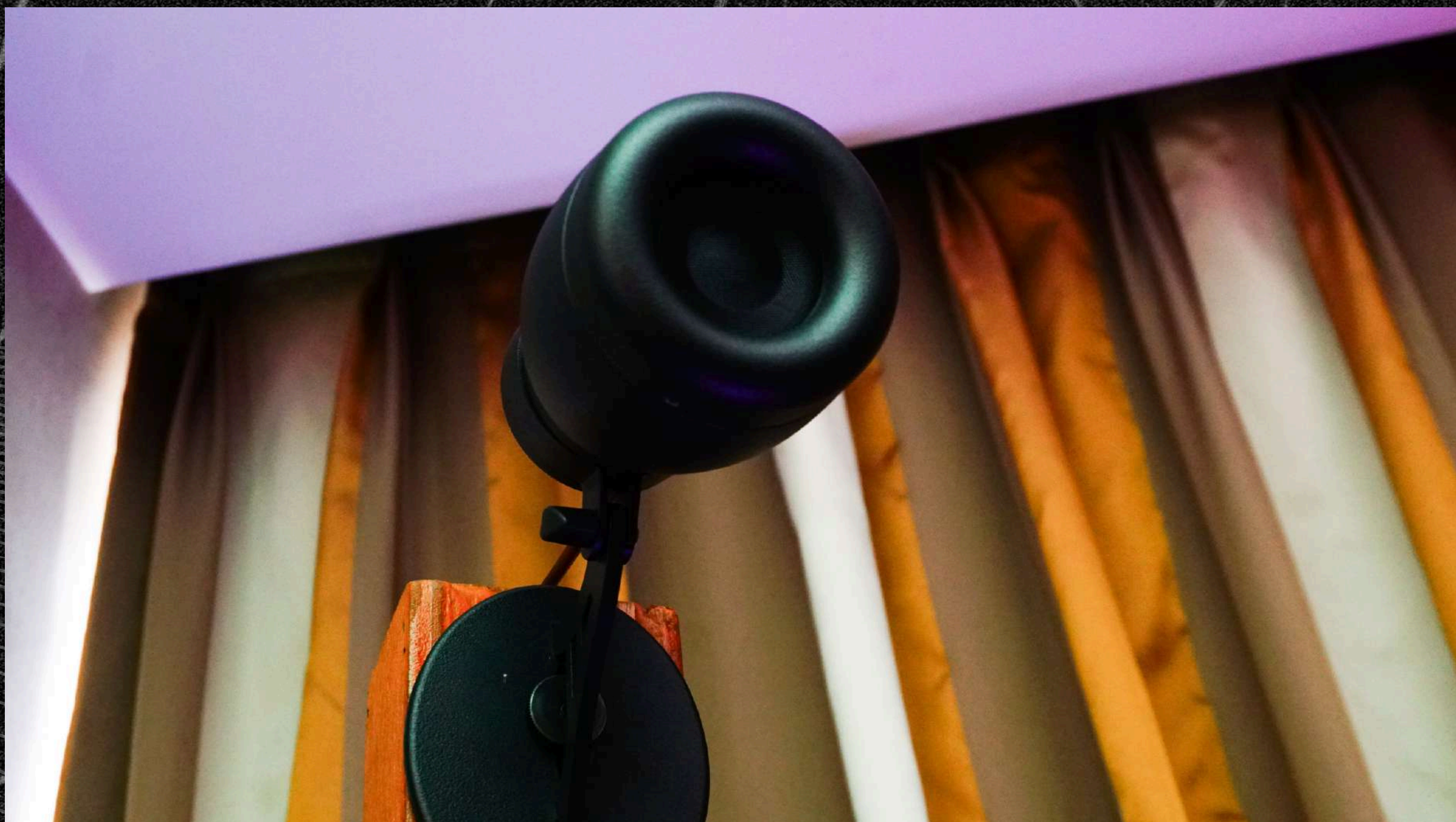
Audio Performance and Versatility





The acoustic excellence is driven by K-array's proprietary, high-efficiency **2-inch transducer**, specifically engineered for this compact series. This design allows the speaker to effortlessly reproduce both speech and music, offering a wide-ranging frequency response and very low distortion. This acoustic versatility establishes the Tornado as a true "**turnkey solution**" for fixed applications requiring both clear voice reproduction and quality background audio.





The acoustic excellence is driven by K-array's proprietary, high-efficiency **2-inch transducer**, specifically engineered for this compact series. This design allows the speaker to effortlessly reproduce both speech and music, offering a wide-ranging frequency response and very low distortion. This acoustic versatility establishes the Tornado as a true "**turnkey solution**" for fixed applications requiring both clear voice reproduction and quality background audio.



Flexible Integration and Features



The Tornado system offers significant installation flexibility:

- ❖ **Passive-to-Active Conversion:** While designed as a passive speaker, it can be easily and quickly converted into a self-powered device by simply inserting a dedicated, Tornado-specific amplifier module. This modularity simplifies system planning and maintenance.
- ❖ **Mounting Options:** The different models are tailored for specific installation needs: the **KT2** models include a wall bracket for fixed or surface mounting, while the **KT2C** models come with a ceiling bracket for in-set ceiling applications, ensuring seamless integration into any environment.
- ❖ **Integrated Lighting (KTL Models):** For installations requiring both sound and visual flair, the **KTL2** and **KTL2C** models stand out with an added feature: **six integrated RGB LEDs**. These can be controlled via DMX or a remote control using a range of K-array accessories, allowing the speaker to double as an architectural lighting element.





WESTCO AV: Bringing K-array Innovation to the Philippines

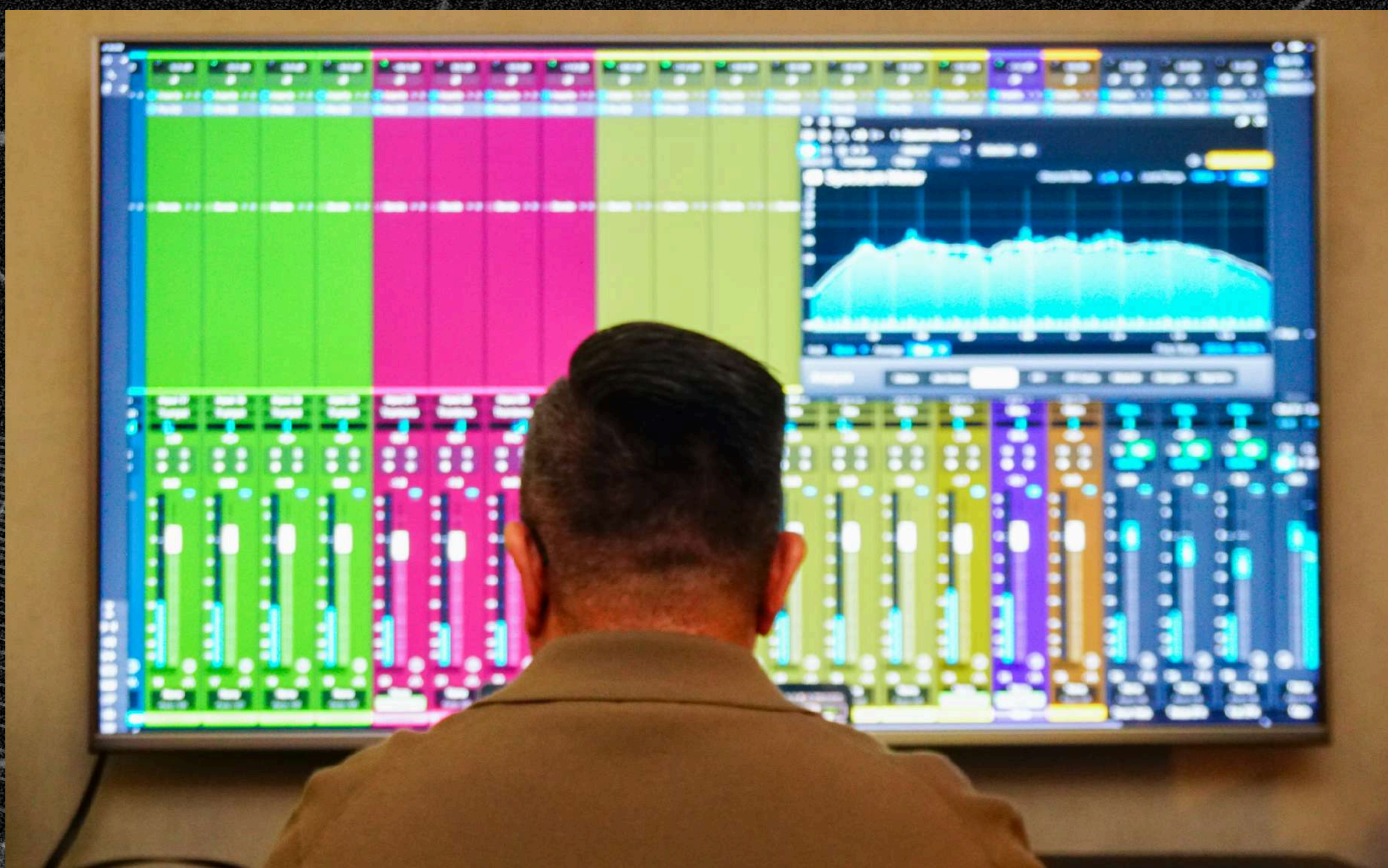




As the appointed distributor for K-array in the Philippines, WESTCO AV has championed the brand's innovative audio solutions, including the ultra-compact Tornado-KT2 point source speaker.

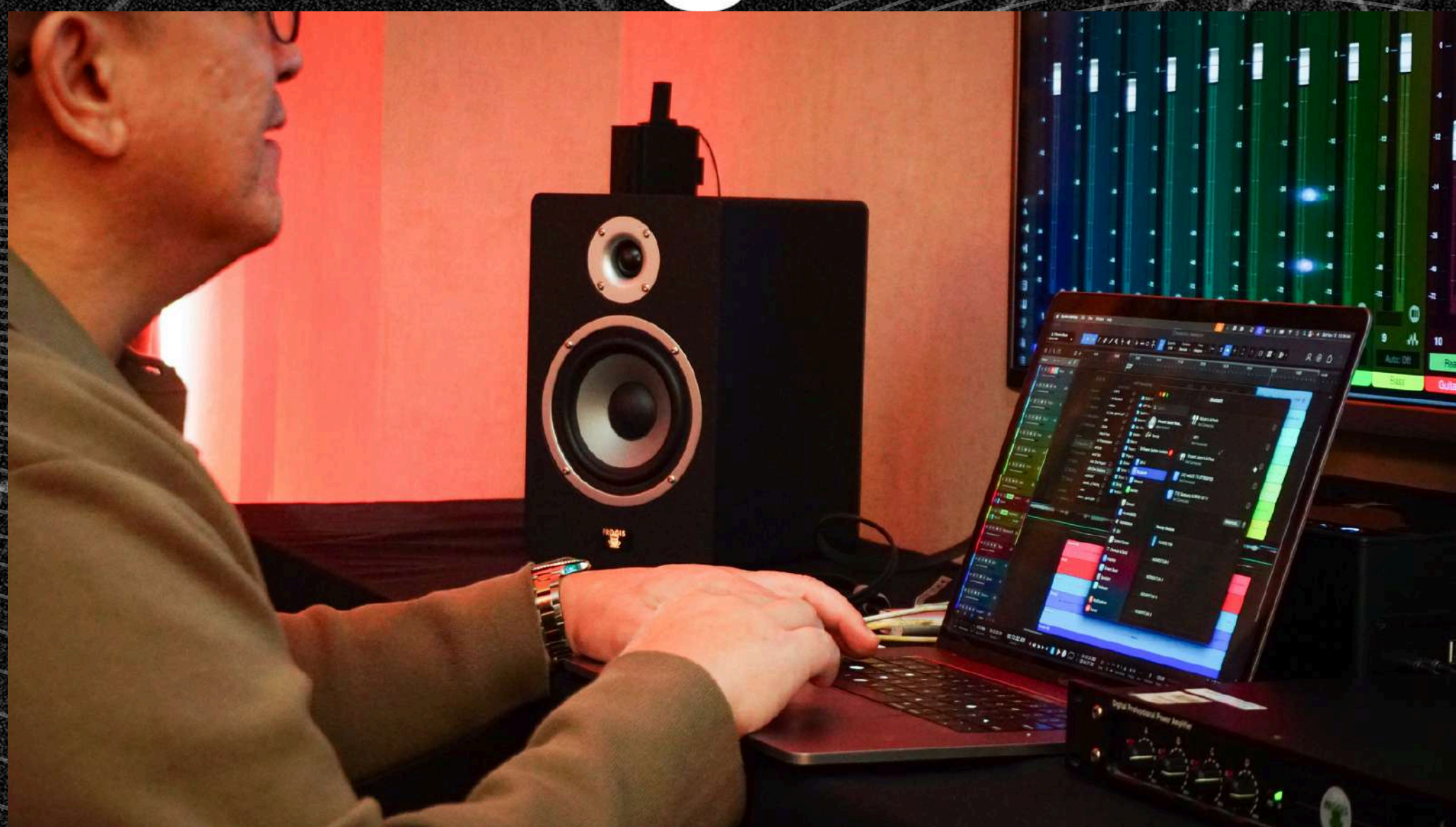
WESTCO AV is the essential link, providing local expertise and support for these high-performance systems.

WESTCO AV ensures that Philippine clients, from top architects and engineers to high-end residential customers, receive the full benefit of K-array's design and sound quality, transforming spaces with an audio presence that is heard, not seen.





WESTCO AV Dominates November Hi-fi 2025 with K-array, K-gear, K-scape, and Frog-is



Successful Showcase at the November Hi-Fi Show 2025





WESTCO AV proved its unwavering commitment to quality, innovation, and reliability during the November Hi-Fi Show 2025—a two-day event held at the prestigious Makati Diamond Residences. The Philippines' largest Hi-Fi/Vid-Fi exhibition celebrated 23 years of High Fidelity in its new, elegant home, bringing together audio enthusiasts from all corners.

The show featured a sprawling showcase with over 60 rooms dedicated to High-End 2-channel Audio, Portable Audio, Home Theatre, as well as a rich selection of Vacuum Tubes, Vinyl, and CDs for sale, all offered with complimentary entrance. Amidst this extensive display, WESTCO AV's presentation stood out, highlighting the cutting-edge technology and superior performance of K-array, K-gear, K-scape, and Frog-is systems.



Highlighting the Cutting-Edge K-array Lineup



Visitors were treated to an immersive audio experience featuring a curated selection of K-array's most advanced products. The sheer clarity and compact power of the **Lyzard KZ-1** micro-line array element were on display, paired with the deep, authoritative bass of the **Rumble KU212** subwoofer.

The **Tornado KT2** provided a compelling blend of discretion and dynamic sound, while the ultra-flat, high-performance line arrays, the **Vyper KV52** and the newer Vyper KV52 II, demonstrated K-array's mastery of seamless integration and audio quality. Low-frequency excellence was further ensured by the robust **FI SUB-6P**.

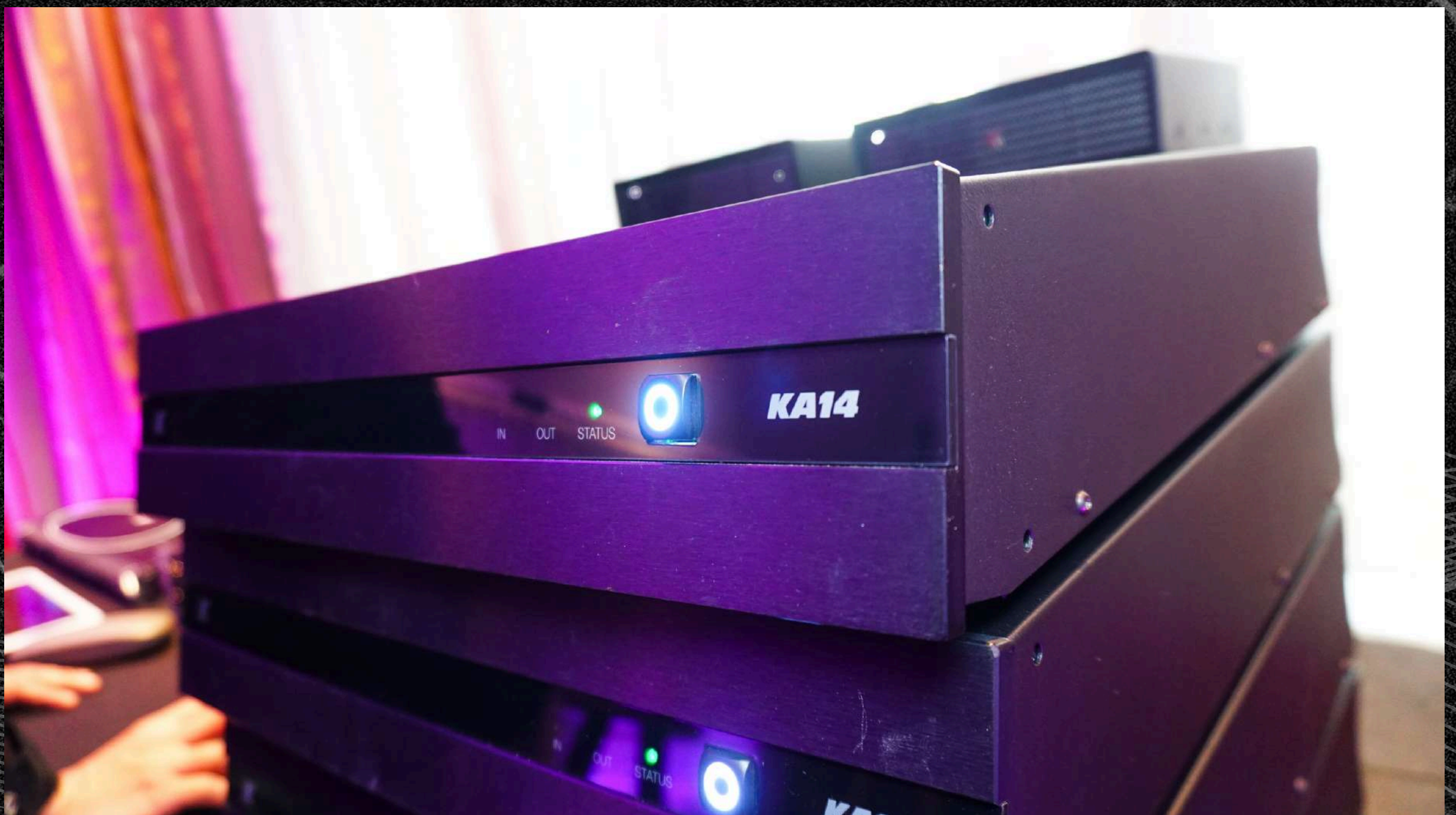


The Power Behind the Sound: Kommander Amplifiers





Driving these sophisticated speakers were the versatile and powerful Kommander amplifiers: the KA14, the KA34, and the compact yet potent KA02, each showcasing the remarkable control and processing power required for true high-fidelity sound reproduction. The combination of these meticulously engineered components solidified WESTCO AV's reputation as a purveyor of world-class, discreet, and revolutionary sound solutions.





A Note of Appreciation





WESTCO AV extends a sincere appreciation to all the attendees who visited their exhibit and shared in their passion for exceptional audio. Your enthusiasm and engagement make events like the Hi-Fi Show truly worthwhile.

