

# SHANTUI

## SD60-C5

Crawler Dozer



Engine Model: Cummins QSK19  
Gross Power: 450kW(604hp)@1800rpm  
Operating Weight: 70,630kg

Shantui Torqflow Travel Drive  
powershift transmission



# SD60-C5 SPECIFICATIONS

## ENGINE

Engine	Cummins QSK19
Emission	China-III
Rated revolution	1800rpm
Gross power	450kW(604hp)@1800rpm
Net power	438kW(588hp)@1800rpm
Number of cylinder-bore×stroke	6-159mm*159mm
Displacement	19L
Max. torque	3019N.m@1300rpm
Cooling system	Smart hydraulic control fan

## DRIVE SYSTEM

Drive system	Torqflow transmission consists of a water-cooled, 3-element, 1-stage, 1-phase torque converter with lockup clutch and a planetary gear, multiple-disc clutch transmission which is hydraulically-actuated and force-lubricated for optimum heat dissipation. Gearshift lock lever and neutral safety switch help prevent accidental starts.	
Traveling speed	Forward	0-3.8/0-6.8/0-11.8km/h
	Backward	0-5.1/0-9.2/0-15.8km/h
Torque converter	3-element, 1-stage, 1-phase with lockup clutch	
Transmission	Planetary gear, multiple-disc clutch, hydraulically actuated and force-lubricated	
Steering clutch	Wet, multiple-disc steering clutches are spring-actuated loaded and hydraulically released.	
Brake clutch	Wet, multiple-disc brakes are spring-actuated and hydraulically released.	
Final drive	Primary spur gear + primary planetary reduction	

## CHASSIS SYSTEM

Type	Oscillation with equalizer bar and forward mounted pivot shafts, unique K-type bogies
Track shoe type	Single grouser
Track gauge	2500mm
Width of track shoe	610/710/810mm
Track grounding length	3840mm
Track grounding area	46850cm <sup>2</sup>
Number of track shoe	40pcs/single side
Grounding pressure (standard configuration)	130.2kPa
Number of carrier roller	2pcs/single side
Number of track roller	7pcs/side
Pitch	280mm

## REFILL CAPACITY

Fuel capacity	1150L
Coolant liquid capacity	122L
Engine oil capacity	24L
Hydraulic oil tank	275L
Transmission	246L
Final drive	61L/single side

## OPERATING WEIGHT

Standard	70630kg
----------	---------

## BLADE

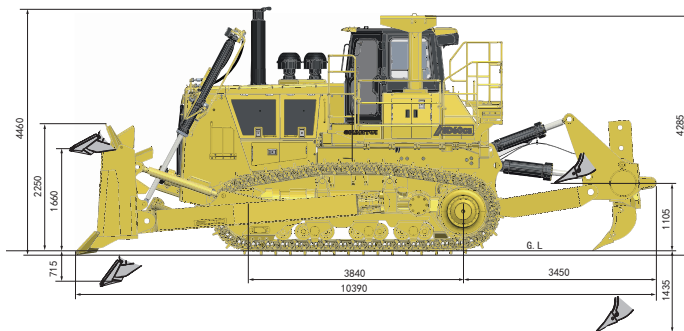
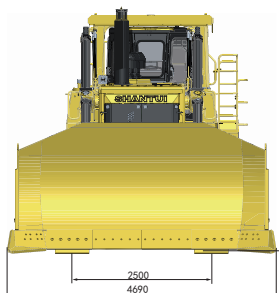
Blade type	Semi-U blade(heavy duty)
Blade capacity	18.9m <sup>3</sup>

## DIMENSION

Machine height (without ROPS)	4370mm
Track grouser height	93mm
Ground clearance	610mm
Machine length (without draw bar)	10390mm
Max. lifting height of blade	1660mm
Max. digging depth of blade	715mm
Digging angle of blade	55°
Blade width	4690mm
Blade height	2250mm
Width from end of left track shoe to end of right track shoe (standard)	3110mm

## RIPPER

Type	Single shank ripper
Weight	3946kg
Max. ripping depth	1435mm
Max. lifting height	1105mm
Ripper length (at deepest ripping)	2928mm
Ripper width	1600mm
Departure angle (at highest lifting)	45.6°



\* THE SPECIFICATIONS ARE SUBJECT TO CHANGE WITHOUT NOTICE. THE PICTURES MAY INCLUDE OPTIONS. THE ACTUAL COLOR & APPEARANCE OF THE PRODUCT MAY DIFFER FROM WHAT IS SHOWN.

## SHANTUI CONSTRUCTION MACHINERY CO., LTD.

ADD: No. 58, G327 Highway Jining City, Shandong, CHINA  
 TEL: +86-537-2909369  
 FAX: +86-537-2311219  
 EMAIL: trade@shantui.com  
 WEB: www.shantui.com

**SHANTUI**  
 LET'S MAKE CONSTRUCTION EASIER