

# SHANTUI

## DH80-C6

Crawler Bulldozer



ENGINE MODEL	Weichai 8M33
GROSS POWER	570kW/765HP@1800rpm
OPERATING WEIGHT	77,000 kg

VALUE THAT WORKS

# DH80-C6 TECHNICAL PARAMETERS

## ENGINE

Engine	Weichai 8M33
Emission standard	China-III
Rated speed	1800rpm
Gross power	570kW/765HP
Piston displacement	26.14L
Maximum Torque	3500N.m/1400rpm

## TRANSMISSION SYSTEM

Transmission system	Dual-circuit electronically controlled hydrostatic drive, intelligent matching of load changes
System overflow pressure	45000 KPa
Travel speed	Forward speed 0-11km/h Reverse speed 0-11 km/h
Traction force	960kN
Steering clutch	Differential steering of hydraulic motor, pivot steering, load steering
Steering brake	Normally closed brake
FINAL DRIVE	Reduction of single spur gear + dual planetary gear

## CHASSIS SYSTEM

Type	High-mounted drive, pivot-type K-shaped floating suspension
Track form	Lubricated tracks
Center distance of crawler	2550mm
Width of track shoe	610/660/710mm
Length of track on ground	3880mm
Track grounding area	4.73/5.12/5.51m <sup>2</sup>
Number of Crawler Sections	44
Specific pressure to ground (equipped with shed)	163/150/139
Number of carrier roller	1/side
Quantity of thrust wheels	8/side
Chain rail pitch	260.35mm

## MAINTENANCE CAPACITY

Fuel tank capacity	1168L
Coolant liquid capacity	154L
Engine oil capacity	95L
Hydraulic fuel tank	320L
Final drive	40L
Transfer case	14L

## OPERATING WEIGHT

Equipped with ROPS cab + ripper 77000kg

## BLADE

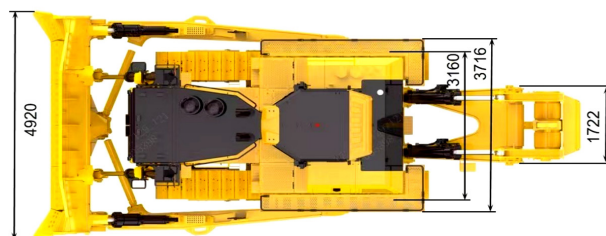
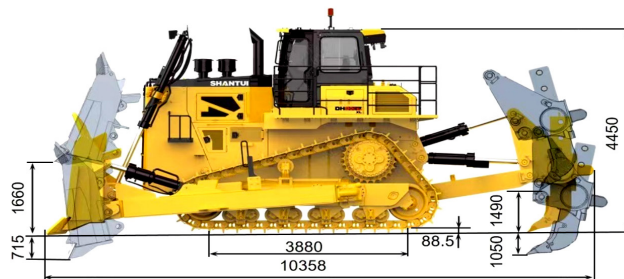
Blade Type	Rock type/U blade
Blade capacity	20/24m <sup>3</sup>

## DIMENSIONS

Height of complete machine (excluding ROPS)	4450mm
Grouser height	88.5mm
Ground clearance	725mm
Overall length of complete machine (including ripper)	10358mm
Maximum Lifting Height of Blade	1660mm
Maximum penetrating depth of blade	7150mm
Blade length	4920mm
Track width at both ends	3160mm

## RIPPER

Type	Single-shank
Penetrating depth	1050mm
Lifting height	1490mm
Ripper width	1722mm



\* THE SPECIFICATIONS ARE SUBJECT TO CHANGE WITHOUT NOTICE. THE PICTURES MAY INCLUDE OPTIONAL CONFIGURATION. THE ACTUAL COLOR & APPEARANCE OF THE PRODUCT MAY DIFFER FROM WHAT IS SHOWN.



Shantui Social

**SHANTUI CONSTRUCTION MACHINERY CO., LTD.**

ADD: NO. 58, G327 HIGHWAY, HI-TECH ZONE, JINING CITY, SHANDONG, CHINA

TEL: +86-537-2909369 FAX: +86-537-2311219

EMAIL: trade@shantui.com WEB: www.shantui.com

**SHANTUI**  
VALUE THAT WORKS