

VALUE THAT WORKS

GROUP PRODUCTS



Shantui Social

SHANTUI CONSTRUCTION MACHINERY CO., LTD.
ADD: No. 58, G327 Highway, Jining City, Shandong, CHINA
TEL: +86-537-2909369
FAX: +86-537-2311219
EMAIL: trade@shantui.com
WEB: www.shantui.com

SHANTUI

Engine Model: Weichai WD12G250E202
Gross Power: 185kW(248hp)@2100rpm
Operating Weight: 23,820kg

Linde Hydrostatic Travel Drive
electronic control



WALK-AROUND

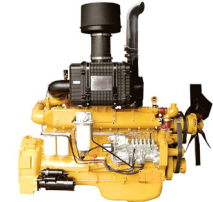


TWO-STAGE AIR FILTER

- Filtration efficiency >99.9%
- Integrated high quality pre-filter with Cyclone tube filtration
- Radial seal, reliable, easy maintenance

SHIG GOLDEN POWERTRAIN

- Weichai WD12 engine with Pre-Filter
- LINDE hydrostatic transmission(HST)
- More powerful & reliable, fuel economy



EASY OPERATION

- Excellent visibility to blade, curbs and tight spaces
- Palm Command Control System(PCCS)
- Large user-friendly monitor display



ENHANCED DOZING BLADE

- Heavy-duty wear-resistant blade with big capacity wear resistant steel with big capacity
- *Standard Semi-U blade
- *Straight-tilt, U type blade
- Expanded productivity takes on variety of applications and material conditions
- Lift and tilt of the blade is easy to made simultaneously, which help increasing productivity.

360° VISIBILITY

- Optional ROPS/FOPS
- A/C installed at rear top of cab

MULTIFUNCTIONAL ATTACHMENT

- Standard drawbar
- Multi-shank ripper (optional)

IMPROVED DURABILITY

- Modular design
- Heavy-plate steel used throughout
- Pivot equalizer bar suspension
- Heavy duty final drives

INCREASED PRODUCTIVITY

- 0-10km/h variable speed selection
- 360° counter-rotation turn
- New efficient electronic controlled hydrostatic system

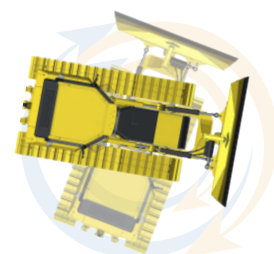


COMFORT



HST WITH ELECTRONIC CONTROL

DH24-B2 is equipped with Linde-designed Hydrostatic Transmission (HST) that allows for Quick-Shift or variable speed selections. The HST consists of dual-path closed-loop systems with two variable displacement piston pumps and two variable displacement travel motors. Hydrostatic steering eliminates steering clutches and brakes, providing smooth powerful turns. Fully electronic control provides full automatic shifting and enables smooth control.



MULTI-FUNCTION MONITOR

The multi-function monitor provides status of the machine, as well as self-Diagnostic information and maintenance reminder.



COMFORTABLE ENVIRONMENT

Equiped with A/C fitted on rear top of cabin, radio, fan, sunshade curtain for front and side windows, equiped with 24V lighter , USB charging port.



PPC & PCCS CONTROL

PPPC (Palm-command Proportional Pressure Control) joysticks controls blade & ripper. PCCS (Palm Command Control System) joystick controls all directional and speeds movements.

DURABILITY

SHIG GOLDEN POWERTRAIN

Weichai engine, Linde hydraulic system, SHANTUI transmission & undercarriage system, all belong to SHANDONG HEAVY INDUSTRY GROUP(SHIG), the world-wide famous power system manufacture & supplier.

Fuel efficient mechanical controlled engine. Weichai WD12 engine special designed for DH24-B2, delivers flywheel power of 185KW (248 HP) at 2100 rpm. The engine is turbo-charged and features direct fuel injection to maximize power and fuel efficiency. Low fuel consumption, parts universality and low maintenance cost.



LONG TRACK-ON-GROUND

Long track-on-ground with 7 track rollers improves machine stability , grading and dozing performance. SHANTUI's track frame design using thicker box section material and fewer welded components provides increased rigidity and strength.

OPTIONS OF WORKING ATTACHMENTS

Standard equipped with drawbar. Other optional attachments available such as mult-shank ripper for ground breaking, hydraulic winch for forestry logging.



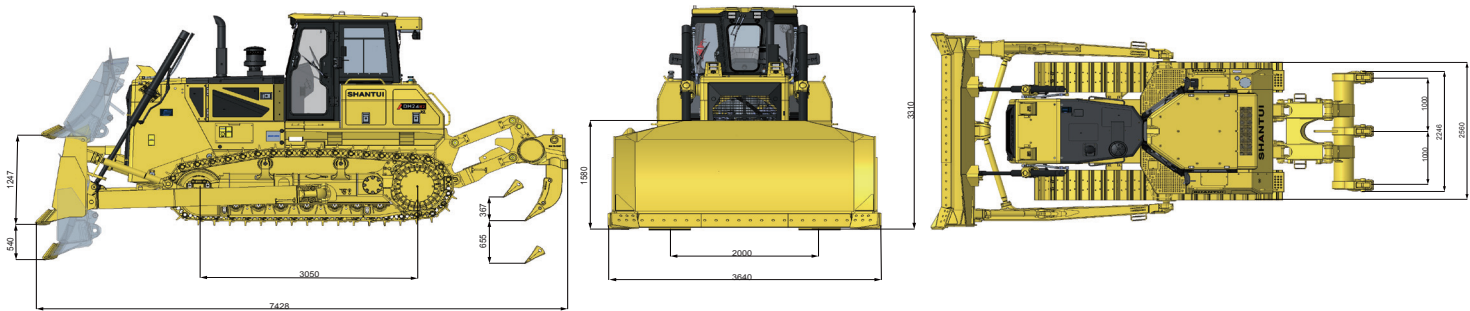
WIDE OPEN ACCESSIBLE MAINTENANCE

The DH24 machine design is not only concern about operators' comfort it also offers convenience on the daily maintenance. Wide-open maintenance access for engine, hydraulics and electrical A/C systems. Centralized hydraulics pressure detection/testing location. All daily maintenance can be performed efficiently at ground level.

SPECIFICATIONS

ENGINE					
Model	Weichai WD12G250E202				
Emission	China-II				
Rated speed	2100rpm				
Gross power	185kW(248hp)				
Net power	167kW(224hp)				
No. of cylinder-bore×stroke	6-126mm*155mm				
Displacement	11.596L				
Max. torque	1200Nm@1300-1400rpm				
Cooling system	Mechanic fan				
DRIVE SYSTEM					
Drive system	Independent dualcircuit electric control hydrostatic drive, intelligent matching of speedload, “stepless” variable speed, monolever control of travel, speed and steering; steering with load, pivot steering, work flexibly, high efficiency, easy for maintenance				
System overflow pressure	45000kPa				
Traveling speed	Forward	0~11km/h			
	Backward	0~11km/h			
Max. theoretical traction force	368kN				
Steering	Independent drive of track at both sides to ensure the full power output for pivot steering and steering with load				
Brake	Regular closed multi-disk brake				
Final drive	Double-reduction final drives of spur gear and planetary gear				
UNDERCARRIAGE	XL	CH	RS	LGP	WH
Type	Pivot, equalizing beam suspended type, semi-rigid structure				
Track shoe type	Single grouser	Single grouser	Single grouser	Wetland type	Wetland type
Track gauge	2000mm	2000mm	2000mm	2250mm	2250mm
Width of track shoe	560/610/660mm	610/660mm	560/610/660mm	910mm	910mm
Track grounding length	3050mm	3050mm	3050mm	3482mm	3482mm
Track grounding area	34160/37210/40260cm ²	34160cm ²	34160/37210/40260cm ²	63372cm ²	63372cm ²
Number of track shoe	41 pcs/side	41 pcs/side	41 pcs/side	45 pcs/side	45 pcs/side
Grounding pressure (standard configuration)	68.3/62.7/58kPa	64.5kPa	70/64.3/59.5kPa	40.9kPa	41.8kPa
Number of carrier roller	2 pcs/side	2 pcs/side	2 pcs/side	2 pcs/side	2 pcs/side
Number of track roller	7pcs/side	7pcs/side	7pcs/side	8 pcs/side	8 pcs/side
Pitch	216mm	216mm	216mm	216mm	216mm
CAPACITIES					
Fuel capacity	390L				
Coolant liquid capacity	61L				
Engine oil capacity	24L				
Hydraulic oil tank (travel)	64L				
Hydraulic oil tank (work)	95L				
Final drive	37L/side				
Transfer case	6L				
OPERATING WEIGHT	XL	CH	RS	LGP	WH
Operating weight (standard)	23850kg	24505kg	24429kg	26450kg	27080kg
Weight of ROPS frame	448kg				

BLADE	XL	CH	RS	LGP	WH
Blade type	Semi-U	U-blade	Straight-tilt blade	Straight-tilt blade	Waste handling blade
Blade capacity	6.5m³	7.5m³	8.7m³	6.42m³	12.86m³
DIMENSION	XL	CH	LGP		WH
Machine height (with ROPS)	3335mm	3350mm	3350mm	3525mm	3525mm
Track grouser height	72mm	72mm	72mm	123mm	123mm
Ground clearance	450 mm	450 mm	450 mm	450 mm	450 mm
Machine length (with draw bar)	5940mm	6474mm	5940mm	6097mm	6469mm
Max. lifting height of blade	1247mm	1265mm	1247mm	1300mm	1300mm
Max. digging depth of blade	540mm	545mm	540mm	550mm	550mm
Digging angle of blade	52°±3°(deg.)				
Blade width	3642mm	3800mm	3642mm	4365mm	4365mm
Blade height	1580mm	1294mm	1801mm	1400mm	1981mm
Blade tilt height	840mm	850mm	840mm	680mm	680mm
Width from end of left track shoe to end of right track shoe (standard)	2560mm	2660mm	2560mm	3160mm	3160mm
Min turning radius	4210mm	4204mm	4210mm	4319mm	4316mm
RIPPER					
Type	Three-shank ripper	Three-shank ripper	Three-shank ripper	Three-shank ripper	Three-shank ripper
Weight	2646kg	2646kg	2646kg	2646kg	2646kg
Max. ripping depth	655mm	655mm	655mm	655mm	655mm
Max. lifting height	567mm	567mm	567mm	567mm	567mm
Ripper length (at deepest ripping)	1882mm	1882mm	1882mm	1882mm	1882mm
Ripper width	2246mm	2246mm	2246mm	2246mm	2246mm
Departure angle (at highest lifting)	16.35°	16.35°	16.35°	16.35°	16.35°
Ripping width	2000mm	2000mm	2000mm	2000mm	2000mm
Distance between ripper teeth	1000mm	1000mm	1000mm	1000mm	1000mm



* The specifications are subject to change without notice. The pictures may include options. The actual color & appearance of the product may differ from what is shown.