

# Invitational Bull Sale

2025 | 11:00AM MONDAY 15<sup>TH</sup> SEPTEMBER  
ROLLESTON LIVESTOCK COMPLEX







# Contents

SALE INFORMATION	4
HOW TO REGISTER	8
WELCOME	9
REFERENCE SIRES	15
2025 SALE BULL NOMINATIONS	25
EBV SUMMARIES	94
SALE RESULTS	99
TERMS AND CONDITIONS	100

## Disclaimer

The vendors have endeavoured to produce this catalogue with care and accuracy and will not be responsible for any errors or omissions. All persons who attend the sale do so at their own risk. The vendors, staff and agents do not assume or accept any responsibility or liability, of whatever nature, legal or otherwise, for any accident, injury or damage which may occur.

# Annual Bull Sale Info

## When & Where:

11:00am | Monday, 15th September 2025  
Rolleston Livestock Complex, Dip Road, Rolleston Qld

## We welcome all enquiries.

Tim Patterson 0427 170 156

Greg Hardgrave (Country Co) 0418 759 267

Matt Pearce (GDL) 0429 928 666

## Pre-Sale Information / Inspections.

All **sale bulls** are running at Bottle Tree Downs, 20kms west of Rolleston. Inspection of these bulls is encouraged and can be arranged with Tim prior to the sale.

## Guarantee:

Fertility is a top priority for both Broad Leaf Santa Gertrudis and Rosevale Santa Gertrudis. Through morphology and physical examination we have worked to eliminate sub-fertile bulls.

We engage with one of the industry's most recognised morphology service providers to identify the fertility potential of our sale bulls and invite buyers to discuss any concerns they may have with their purchases.



StockLive will also be operating at our sale and a live stream of the auction will be conducted for buyers who are unable to attend the event in person.



## **Delivery.**

Delivery can be arranged. Please discuss your delivery requirements with Tim, David or the selling agents.

## **Terms.**

This auction will be operating under the ALPA association terms and conditions of sale.

## **Refreshments.**

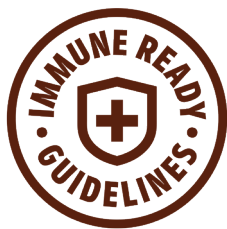
A canteen will be available on sale day.

We invite you to join the Broad Leaf and Rosevale team for a cool drink and a catch up at the closing of the sale.



Photos are available on both Broad Leaf Santa Gertrudis and Rosevale Santa Gertrudis social media





## Health and Vaccinations

This year, all sale bulls have been certified Immune Ready by Zoetis.

This means, all bulls have been vaccinated with:

- 7-in-1
- Vibrio
- 3 germ blood
- Rhinoguard IBR
- Longrange

Both Broad Leaf and Rosevale bulls have been vet inspected and semen morphology tested. All bulls have been pre-treated for ticks and are ready to clear into clean zones.

Both Bottle Tree Downs and Rosevale properties are J-BAS 7 compliant.

A supplementary sheet will be available with weights, EMA and fat scan information on the day of sale.

---

## BROAD LEAF

### **BULL EVALUATION & SEMEN MORPHOLOGY**

Ced Wise AB Services and Rocky Repro.

### **SCANNING AND SUPPLEMENTARY DATA**

Lonnie Stone scanning services.

---

## ROSEVALE

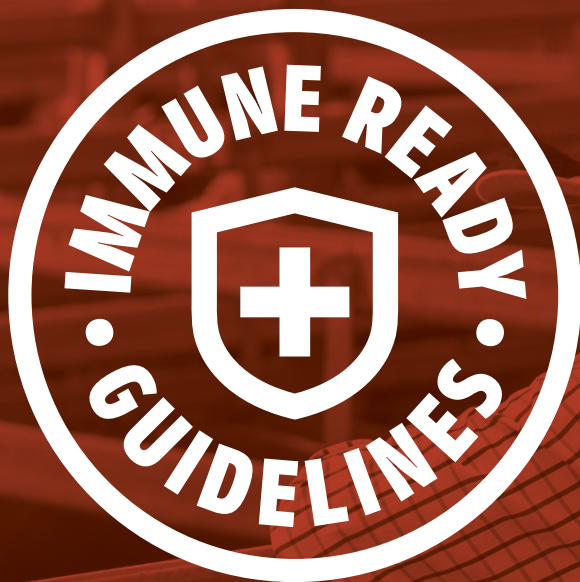
### **BULL EVALUATION & SEMEN MORPHOLOGY**

Dr Kim Kelly of Kelly Ag Morphology Services.

### **SCANNING AND SUPPLEMENTARY DATA**

Lonnie Stone scanning services.

---



## IT'S A SIGN OF BETTER PRODUCTIVITY AND ANIMAL HEALTH

**'Immune Ready' is a guideline for the care of sale cattle. It helps protect cattle in the preparation, transport and arrival post sale.**

### FOR BUYERS

- ✚ It reduces the risk of disease in purchased cattle
- ✚ It improves farm biosecurity
- ✚ It improves animal health and welfare

### FOR SELLERS

- ✚ It prepares your cattle for potential disease challenges
- ✚ It allows you to promote and sell premium cattle
- ✚ It helps safeguard against disease and improve productivity



**Learn more about  
Immune Ready Guidelines**

ENDORSED BY



zoetis

Virbac

COOPERS

# HOW TO REGISTER with



Follow these easy steps to start bidding:



Visit [www.stocklive.com.au](http://www.stocklive.com.au) using your desktop, laptop, iPad, iPhone or Android device. NO App required.



Select the **bid** icon beside the sale you wish to bid on.



If you're new, select **register**, and complete the form with all your details, **accept sale conditions**, select **create bidder registration**.



You will receive an email from StockLive. Select "**Confirm my bidding account**" to set your password and **accept Bidder Account Terms & Conditions** and Privacy Policy followed by **create my account**.



Congratulations! Your StockLive account has been created and your bid request is pending. You will be notified via email when your request to bid has been approved.



Existing users, follow steps 1 & 2, select login, enter your details followed by the **request to bid** icon beside the sale you wish to bid on and then **accept** the terms.



On Sale Day, follow steps 1 & 2, select **enter auction** to watch, listen and purchase when the sale is flashing **LIVE**.



Invoicing and delivery will be carried out as per your registration details by the respective Selling Agents.



1300 259 742

[support@stocklive.com.au](mailto:support@stocklive.com.au)

[www.stocklive.com.au](http://www.stocklive.com.au)





Welcome

“

*We are in the business of beef and endeavour to provide bulls that meet these market requirements, with a focus on long-term breeding soundness.*

”





Welcome to the **2025 Broad Leaf Santa Gertrudis Invitational Sale.**

This year we are pleased to welcome Rosevale Santa Gertrudis to our sale, in what is their first venture into Central Queensland.

In 2011, we introduced our first Rosevale bull into the Broad Leaf herd - Rosevale Buster F500 (P).

Since then, Rosevale bulls have been a great addition to our program and continue to align with our breeding philosophy.

We embark on producing bulls that are fit and ready for purpose. Our bulls are prepared on pasture and forage oats, with little to no supplementary feed provided.

Since our last sale, we have been rewarded with a number of awards for our bulls and their progeny, including the title of **Best Overall Steer** at the Bauhinia Carcass Classic.

In 2025, we proudly present **55 bulls** that show an elevated level of quality across the group, compared to previous years.

The lead of our bulls are sired by Broad Leaf Nullarbor R91 (P). This endorses our selection process and gives us confidence in the direction we are heading.

Our strict standards on temperament, fertility, structure, market suitability and adaptation to the Central Queensland environment, remain without waver and continue to be the cornerstone of our selection process. Since joining BREEDPLAN in 2024, we will continue to work on building our EBVs and improving our data offering.

Our EBVs remain a work in progress, and are set to improve as more data is recorded, and more progenies are recorded against them. We welcome any enquiries around this data.

We look forward to catching up with you over some refreshments upon conclusion of the sale and wish you well with your purchases.

*Tim, Trina and Family.*



# ROSEVALE





On behalf of our family, Sonya and I would like to thank Tim and Trina for the opportunity to be vendors at their bull sale. When Tim first rang, looking to bolster numbers in the sale, we were cautious about suggesting that we might be interested. Having bulls offered in a sale outside of our own is not something we would normally do.

We only gave this consideration, knowing that the Pattersons grow and prepare their bulls similarly to us – off pasture. In addition, they are breeding cattle with the same philosophies. With these points in mind, having our bulls included in the Broad Leaf Sale seems like a good fit.

The Rosevale bulls were delivered to Rolleston on July 20th and will run in the same mob as the Broad Leaf bulls until sale day.

We have selected twelve bulls, representing a number of bloodlines in order to showcase what we breed. Included are a number of bulls from our most proven, high performing bloodlines along with a couple of composite-blood bulls with a small percentage of European/British influence in them.

For those who haven't purchased Rosevale bulls before, don't expect to see big, over-conditioned bulls at sale time. These bulls have had no supplementary feeding – not ever. But do expect them to breed as much weight into their progeny as most bulls on the market. Also expect that they will grow to be as heavy at maturity as other bulls.

While the bulls might seem to be lower performing than other bulls at point of sale, their Breedplan EBVs suggest otherwise. The Rosevale herd is one of the most extensively performance recorded herds in northern Australia with a strong focus on herd fertility. The EBVs reported are backed by generations of accurate recording.

Our policy of growing and presenting bulls off pasture gives our bulls a big longevity advantage compared to industry standard. Being fit and healthy at point of sale ensures that they will work from day one and last longer in the herds they go into.

Thanks once again to the Patterson Family and we wish them well with the sale. If you require any further information on our program and the bulls on offer don't hesitate to make contact with David via phone on **0429 686 192** or email [rosevalesanta@bigpond.com](mailto:rosevalesanta@bigpond.com). Further detail is also available on our website [www.rosevalesanta.com.au](http://www.rosevalesanta.com.au).

*David Greenup*



**We're big enough  
to be experts in  
our field.**

**Small enough  
to care what  
happens in yours.**

 **Suncorp Bank Agribusiness**

**SUNCORP BANK**



Banking products are issued by Suncorp Bank (Norfina Ltd ABN 66 010 831 722 Australian Credit Licence 229882 AFSL 229882).  
Suncorp brand used under licence. Suncorp Bank is not part of the Suncorp Group.



# Reference Sires



# Reference Sires.



## Broad Leaf Nullarbor R91 (P)

**Sire:** Strathmore Nullarbor N644 (P)

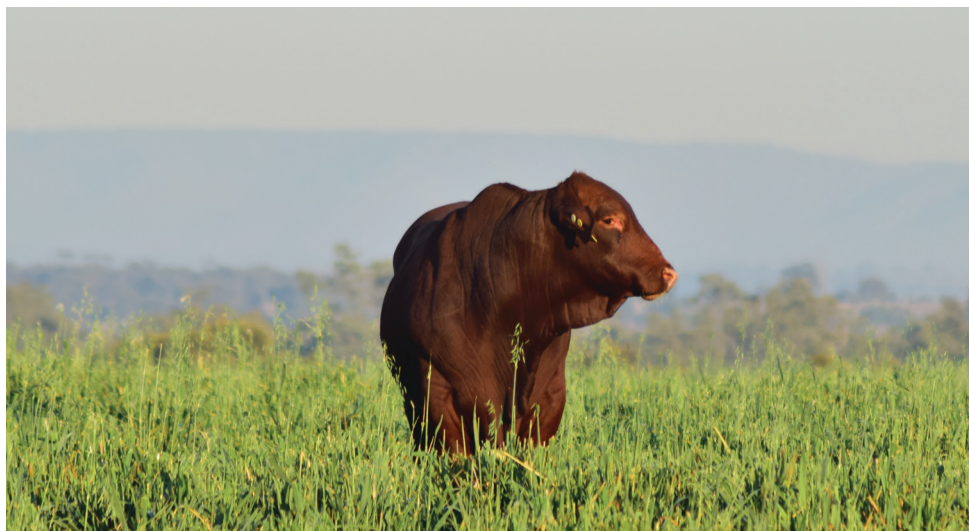
**Dam:** Broad Leaf M144

We kept R91 to carry on the Strathmore Nullarbor line. Very correct, functional bull, with good carcase. Broad Leaf Nullarbor R91 is making his mark on our stud as a prolific breeder of quality cattle.

200D	400D	600D	Mat. Wt.	SS	Car. Wt	EMA	Rib Fat	P8 Fat	IMF
+20	+29	+35	+49	+0.2	+19	+5.0	+1.8	+2.4	+0.4
69%	73%	77%	65%	80%	59%	56%	65%	64%	65%

### \$ Index Value

Term	Breed	Fert +
+\$65	+\$63	+\$25





## Broad Leaf Quinton Q43 (P)

**Sire:** Rosevale Jackaroo J566 (P)

**Dam:** Broad Leaf M89

An AI son of Rosevale Jackaroo J566 (P). Dark-red coated thick set bull with a very quiet nature. He has consistently passed this lovely temperament and a good work ethic onto his progeny.

200D	400D	600D	Mat. Wt.	SS	Car. Wt	EMA	Rib Fat	P8 Fat	IMF
+8	+16	+21	+37	+0.9	+8	+1.3	+1.2	+2.1	+0.7
70%	72%	65%	65%	70%	62%	60%	64%	63%	65%
\$ Index Value									
Term			Breed			Fert +			
+\$41			+\$41			+\$28			

## Greenup Lockyer L120 (PP)

**Sire:** Dangarfield Tycoon (P) | **Dam:** Greenup Asha A93 (P)

Lockyer is by Dangarfield Tycoon who produced lots of good quality cattle at Greenup/Eidsvold Studs. He is a large framed bull with an exceptionally quiet nature. Greenup Asha (P) has 11 naturally sired calves recorded. Two of Asha's bull calves were kept as stud sires in the Greenup herd.

200D	400D	600D	Mat. Wt.	SS	Car. Wt	EMA	Rib Fat	P8 Fat	IMF
+8	+16	+21	+37	+0.9	+8	+1.3	+1.2	+2.1	+0.7
70%	72%	65%	65%	70%	62%	60%	64%	63%	65%
\$ Index Value									
Term			Breed			Fert +			
+\$41			+\$41			+\$28			



Broad Leaf Nottingham  
N522 (P)

**Sire:** Rosevale Kingswood K296 (PS)  
**Dam:** Broad Leaf D190 (P)

Nottingham has grown into an impressive bull, thickset with a dark red coat and quiet temperament.

200D	400D	600D	Mat. Wt.	SS	Car. Wt	EMA	Rib Fat	P8 Fat	IMF
+12	+19	+25	+32	+1.4	+12	+4.5	+1.0	+1.3	0.0
69%	70%	71%	63%	75%	59%	56%	64%	63%	65%
\$ Index Value									
Term			Breed			Fert +			
+\$44			+\$46			+\$12			



Rosevale Kingswood K296 (PS)

**Sire:** Wightfields Downpour G21 (P)  
**Dam:** Rosevale Jade E407 (P)

Kingswood has a strong pedigree of performance on both his sire and dam lines. He is the sire of Broad Leaf Nottingham N522 (P), another of this year's sires. Kingswood completed another year of breeding at 12 years of age.

200D	400D	600D	Mat. Wt.	SS	Car. Wt	EMA	Rib Fat	P8 Fat	IMF
+12	+23	+26	+40	+2.2	+20	+6.0	-0.6	-1.3	-0.6
75%	76%	78%	73%	79%	69%	66%	72%	71%	72%
\$ Index Value									
Term			Breed			Fert +			
+\$53			+\$62			+\$14			



## Gyranda Ryder R544 (AI) (PP)

**Sire:** Rosevale Jethro J208 (AI) (PS)

**Dam:** Gyranda L201 (P)

Purchased at the 2021 Gyranda sale, offering a good balance of performance across all traits, with a great tropical coat. He introduces Rosevale Jethro J208(PS) genetics into our herd.

200D	400D	600D	Mat. Wt.	SS	Car. Wt	EMA	Rib Fat	P8 Fat	IMF
+16	+32	+43	+39	+1.9	+15	+4.2	+1.2	+1.3	+0.5
74%	75%	76%	71%	79%	67%	64%	70%	69%	69%
<b>\$ Index Value</b>									
Term			Breed				Fert +		
+\$71			+\$88				+\$78		



## Rosevale Quinn Q196 (P)

**Sire:** Rosevale Major L520 (ET) (P)

**Dam:** Rosevale Aurora H175 (P)

Purchased in 2020, Rosevale Quinn is an upstanding bull who combines high growth and fertility with a great tropical coat.

200D	400D	600D	Mat. Wt.	SS	Car. Wt	EMA	Rib Fat	P8 Fat	IMF
+19	+28	+42	+46	+1.0	+20	+4.6	+1.1	+0.9	-0.3
75%	77%	78%	73%	82%	67%	67%	71%	71%	72%
<b>\$ Index Value</b>									
Term			Breed				Fert +		
+\$62			+\$76				+\$62		



## Rosevale Starsky S58 (PP)

**Sire:** Rosevale Panama P372 (PP)

**Dam:** Rosevale Patricia P283 (P)

Purchased in 2022, Starsky has a balance of high growth, muscle and finish in combination with solid fertility traits and a quiet temperament.

200D	400D	600D	Mat. Wt.	SS	Car. Wt	EMA	Rib Fat	P8 Fat	IMF
+19	+32	+42	+52	+1.4	+23	+4.8	+0.5	+0.7	-0.4
71%	72%	74%	68%	75%	62%	58%	64%	64%	65%
\$ Index Value									
Term			Breed				Fert +		
+\$65			+\$77				+\$56		



## Broad Leaf Skyfall S07 (P)

**Sire:** Rosevale Buster F500 (P)

**Dam:** Broad Leaf L40

S07 was a favourite of the 2022 sale bulls, and was kept to continue the Rosevale Buster F500 line. Quiet, large frame bull.

200D	400D	600D	Mat. Wt.	SS	Car. Wt	EMA	Rib Fat	P8 Fat	IMF
+10	+13	+21	+26	+0.5	+8	+2.8	-0.1	+0.4	-0.3
59%	60%	63%	56%	62%	51%	46%	53%	52%	54%
\$ Index Value									
Term			Breed				Fert +		
+\$27			+\$19				-\$4		



## Broad Leaf Stanage S81 (P)

**Sire:** Greenup Lockyer L120 (P)

**Dam:** Broad Leaf N168 (PS)

Stanage was kept from our 2022 sale. He is producing calves with a good carcass and great temperament.

200D	400D	600D	Mat. Wt.	SS	Car. Wt	EMA	Rib Fat	P8 Fat	IMF
+3	+5	+4	-4	0.0	+4	-	+1.1	+1.9	+0.3
49%	49%	53%	45%	52%	39%	-	41%	41%	42%
\$ Index Value									
Term			Breed			Fert +			
+\$28			+\$39			+\$14			

## Broad Leaf N04 (PS)

**Sire:** Broad Leaf Fitzroy F41 | **Dam:** BTD Santa Cow

A bull used in our commercial herd. He is out of a fertile female line and has produced a number of good calves.





# Future Sires.



## Rosevale Thunder T212 (P)

**Sire:** Rosevale Majestic M176 (P)

**Dam:** Rosevale Success L481

An exciting new sire by Majestic, with good conception rates from his first journey. His first calves will be in next year's sale.

200D	400D	600D	Mat. Wt.	SS	Car. Wt	EMA	Rib Fat	P8 Fat	IMF
+25	+31	+52	+81	+1.7	+23	+2.8	+2.4	+2.8	0.0
69%	70%	71%	67%	72%	62%	58%	64%	63%	64%

### \$ Index Value

Term	Breed	Fert +
+\$65	+\$60	+\$45

## Gyranda U704 (P)

**Sire:** Rowanlea Kluger K32 (P) | **Dam:** Gyranda M573 (P)

Purchased in 2024, U704 (P) has been joined with our maiden heifers and we are expecting his first calves this year.

200D	400D	600D	Mat. Wt.	SS	Car. Wt	EMA	Rib Fat	P8 Fat	IMF
+13	+20	+29	+67	+2.3	+19	+4.6	+0.8	+0.6	0.0
70%	70%	72%	68%	72%	62%	58%	64%	63%	63%

### \$ Index Value

Term	Breed	Fert +
+\$62	+\$101	+\$103

# ROLLESTON

LIVESTOCK & GRAIN PTY LTD.



**SALE PENS & CATWALK  
DIPPING & SPELLING**

**STUD SELLING COMPLEX & CANTEN  
WATERED FEED & SPELL PENS  
QUALITY WATER & HAY**

**Jeffrey 0488 333 887**

**Alexandra 0487 443 457**

**VET CRUSH & INDIVIDUAL WEIGHING  
DOUBLE DECK LOADING RAMP**

**FULLY AUTOMATED WEIGHBRIDGE  
UP TO AB TRIPLE  
ACCREDITED CATTLE TICK CERTIFIER**

**CQ Tick Clearing Services**

**Mark: 0429 627 566**





# Sale Bull Nominations



Lot 1

BROAD LEAF V106 (P)

DOB: 01-09-2023

AGE: 24 MONTHS

HERD BULL

Sire: Broad Leaf Fitzroy F41

Sire: BROAD LEAF N04 (PS)

Dam: BTD Santa Cow

Sire: Rosevale Buster F500 (P)

Dam: BROAD LEAF L47 (P)

Dam: Gylanda A535

Broad Leaf L47 (P) has 5 calves recorded, and is PTIC.

200D	400D	600D	Mat. Wt.	SS	Car. Wt	EMA	Rib Fat	P8 Fat	IMF
+11	+22	+30	+33	+2.7	+11	+3.5	+0.4	+0.9	+0.9
48%	51%	58%	46%	61%	41%	35%	45%	44%	47%

\$ Index Value

Term	Breed	Fert +
+\$59	+\$68	+\$64

PURCHASER: \_\_\_\_\_

\$ \_\_\_\_\_





Lot 2

BROAD LEAF VICEROY V96 (PP)

DOB: 15-10-2023

AGE: 23 MONTHS

S BULL

Sire: Rosevale Jethro J208 (AI)(PS)

Sire: Rosevale Buster F500 (P)

Sire: GYRANDA RYDER R544 (AI) (P)

Dam: BROAD LEAF S11 (P)

Dam: Gyranda L201 (P)

Dam: Broad Leaf J96

Broad Leaf S11 (P) calved as a 2 year old and has 3 calves recorded in 3 years, and is PTIC.

200D	400D	600D	Mat. Wt.	SS	Car. Wt.	EMA	Rib Fat	P8 Fat	IMF
+16	+29	+36	+32	+2.0	+16	+4.9	+0.6	+0.8	-0.1
55%	58%	62%	54%	65%	49%	45%	52%	52%	54%

\$ Index Value

Term	Breed	Fert +
+\$56	+\$54	+\$25

PURCHASER: \_\_\_\_\_ \$ \_\_\_\_\_



Lot 3

BROAD LEAF VIKING V67 (P)

**DOB: 13-09-2023**

**AGE: 24 MONTHS**

**S BULL**

**Sire:** Strathmore Nullarbor N644 (PP)

**Sire:** Greenup Lockyer L120 (P)

**Sire:** BROAD LEAF NULLABOR R91 (P)

**Dam:** BROAD LEAF R72 (P)

**Dam:** BROAD LEAF R72 (P)

**Dam:** Broad Leaf L03

Broad Leaf R72 (P) has recorded 2 calves in the last 2 years and is PTIC.

200D	400D	600D	Mat. Wt.	SS	Car. Wt	EMA	Rib Fat	P8 Fat	IMF
+20	+35	+43	+60	+0.4	+21	+5.3	+0.9	+1.6	+0.3
52%	55%	61%	50%	65%	46%	40%	50%	49%	51%
\$ Index Value									
Term			Breed			Fert +			
+\$72			+\$73			+\$31			

PURCHASER: \_\_\_\_\_

\$ \_\_\_\_\_



# UNIQUE. TRUSTED PROTECTION FOR CATTLE



BEEF



DAIRY

## VACCINES, DRENCHES & GENOMICS



# zoetis



Lot 4

BROAD LEAF VICAR V70 (PP)

DOB: 19-10-2023

AGE: 22 MONTHS

HERD BULL

Sire: Strathmore Nullarbor N644 (PP)

Sire: Classified Santa Bull

Sire: BROAD LEAF NULLABOR R91 (P)

Dam: BROAD LEAF R32 (P)

Dam: Broad Leaf M144

Dam: Broad Leaf I50

200D	400D	600D	Mat. Wt.	SS	Car. Wt	EMA	Rib Fat	P8 Fat	IMF
+20	+35	+42	+50	+0.4	+23	+7.1	+1.0	+1.6	+0.4
53%	57%	62%	51%	65%	47%	42%	51%	50%	53%

\$ Index Value

Term	Breed	Fert +
+\$80	+\$86	+\$41

PURCHASER: \_\_\_\_\_ \$ \_\_\_\_\_



Lot 5

ROSEVALE MAVERICK V318 (AI)(P)

DOB: 14-09-2023

AGE: 24 MONTHS

S BULL

Sire: Rosevale Jethro J208 (AI)(PS)    Sire: Rosevale Empire P72 (PS)

Sire: ROSEVALE MAVERICK M102 (P)    Dam: ROSEVALE ZENA T63 (P)

Dam: Rosevale Boronia B63    Dam: Rosevale Zena Q491 (P)

Zena T63(P) calved first as a two-year-old, has had two calves in two years, and is PTIC. Zena Q491(P) has had four calves in four years and is PTIC. Three classified 'S' progeny include a son sold for \$8,000. The quiet temperament of this trim sheathed, polled bull is reinforced by his Flight Time EBV. His top five percent Days to Calving EBV is backed by the faultless fertility record of his female line.

200D	400D	600D	Mat. Wt.	SS	Car. Wt	EMA	Rib Fat	P8 Fat	IMF
+15	+22	+32	+39	+2.2	+14	+1.1	+0.3	+0.4	0.0
70%	70%	70%	68%	72%	63%	59%	64%	64%	65%

\$ Index Value

Term	Breed	Fert +
+\$49	+\$71	+\$83

PURCHASER: \_\_\_\_\_

\$ \_\_\_\_\_





Lot 6

BROAD LEAF VINTAGE V71 (PP)

DOB: 21-10-2023

AGE: 22 MONTHS

S BULL

Sire: Strathmore Nullarbor N644

Sire: Greenup Juggernaut J274 (PS)

Sire: BROAD LEAF NULLABOR R91

Dam: BROAD LEAF R46 (P)

Dam: Broad Leaf M144

Dam: Broad Leaf D185

Broad Leaf R46 (P) has recorded 2 calves in the last 2 years and is PTIC. Broad Leaf D185 was a foundation member of the stud, and produced a number of good calves, including Broad Leaf Merlot, who sold to Cooina Santa Gertrudis.

200D	400D	600D	Mat. Wt.	SS	Car. Wt	EMA	Rib Fat	P8 Fat	IMF
+20	+27	+38	+40	+0.9	+16	+4.5	+0.9	+1.4	+0.1
54%	57%	62%	52%	66%	47%	42%	51%	51%	53%

\$ Index Value

Term	Breed	Fert +
+\$56	+\$59	+\$22

PURCHASER: \_\_\_\_\_ \$ \_\_\_\_\_



Lot 7

BROAD LEAF V129 (P)

DOB: 04-09-2023

AGE: 24 MONTHS

HERD BULL

Sire: Dangarfield Tycoon (P)

Sire: Broad Leaf Fitzroy F41

Sire: GREENUP LOCKYER L120 (P)

Dam: BROAD LEAF L13

Dam: Greenup Asha A93 (P)

Dam: Broad Leaf G69

Broad Leaf L13 has 6 calves recorded, and is PTIC.

200D	400D	600D	Mat. Wt.	SS	Car. Wt	EMA	Rib Fat	P8 Fat	IMF
+18	+30	+39	+45	+0.1	+19	+5.1	+0.6	+1.3	0.0
55%	57%	62%	53%	65%	49%	44%	52%	51%	53%

\$ Index Value

Term	Breed	Fert +
+\$64	+\$71	+\$34

PURCHASER: \_\_\_\_\_ \$ \_\_\_\_\_



Lot 8

BROAD LEAF VESPER V189 (PP)

DOB: 12-12-2023      AGE: 21 MONTHS      S BULL

Sire: Strathmore Nullarbor N644 (PP)      Sire: Classified Santa Bull  
Sire: BROAD LEAF NULLABOR R91 (P)      Dam: BROAD LEAF R169 (PP)  
Dam: Broad Leaf M144      Dam: BTD Santa Cow

Broad Leaf R169 (PP) has 2 calves recorded, was PTE and sold.

200D	400D	600D	Mat. Wt.	SS	Car. Wt	EMA	Rib Fat	P8 Fat	IMF
+16	+27	+36	+51	+0.6	+21	+5.4	-0.2	-0.1	-0.1
53%	56%	61%	51%	65%	46%	41%	50%	50%	52%

\$ Index Value

Term	Breed	Fert +
+\$60	+\$65	+\$28

PURCHASER: \_\_\_\_\_ \$ \_\_\_\_\_





Lot 9

ROSEVALE VARGO V112

**DOB: 23-09-2023**

**AGE: 23 MONTHS**

**S BULL**

**Sire:** Rosevale Majestic M176 (P))

**Sire:** Rosevale Maverick M102 (P)

**Sire:** ROSEVALE STATESMAN S266 (P) **Dam:** ROSEVALE SALLY Q1219

**Dam:** Rosevale Kylie P65 (P)

**Dam:** Rosevale Sally N91 (P)

Sally Q1219 has had four calves in four years and is PTIC. Two of her progeny have classified 'S', two sons sold to average \$10,000. Sally N91(P) had three calves before selling PTIC to the Tallangalook Stud. Vargo V112 combines high growth with exceptional female fertility data (Days to Calving EBV of -12.7 days). This results in top 5 percent ranking across all \$Indexes.

200D	400D	600D	Mat. Wt.	SS	Car. Wt	EMA	Rib Fat	P8 Fat	IMF
+20	+31	+45	+71	+1.2	+23	+1.4	+0.2	+0.4	+0.2
68%	68%	69%	64%	69%	58%	53%	60%	59%	60%

\$ Index Value

Term	Breed	Fert +
+\$66	+\$87	+\$96

**PURCHASER:** \_\_\_\_\_ **\$** \_\_\_\_\_



Lot 10

BROAD LEAF VICTORY V83

DOB: 29-10-2023      AGE: 22 MONTHS      S BULL

Sire: Strathmore Nullarbor N644 (PP)      Sire: Classified Santa Bull  
Sire: BROAD LEAF NULLABOR R91 (P)      Dam: BROAD LEAF R150 (P)  
Dam: Broad Leaf M144      Dam: BTD Santa Cow

Broad Leaf R150 (P) has recorded 2 calves in the last 2 years and is PTIC.

200D	400D	600D	Mat. Wt.	SS	Car. Wt	EMA	Rib Fat	P8 Fat	IMF
+25	+36	+52	+64	+1.9	+25	+5.9	+1.0	+1.5	-0.1
51%	54%	60%	49%	64%	45%	40%	49%	48%	51%

\$ Index Value

Term	Breed	Fert +
+\$75	+\$74	+\$26

PURCHASER: \_\_\_\_\_ \$ \_\_\_\_\_



Lot 11

BROAD LEAF VERMONT V86

DOB: 22-10-2023

AGE: 22 MONTHS

S BULL

Sire: Strathmore Nullarbor N644 (PP)

Sire: Classified Santa Bull

Sire: BROAD LEAF NULLABOR R91 (P)

Dam: BROAD LEAF R176 (P)

Dam: Broad Leaf M144

Dam: BTD Santa Cow

Broad Leaf R176 (P) has recorded 3 calves in the last 3 years and is PTIC.

200D	400D	600D	Mat. Wt.	SS	Car. Wt	EMA	Rib Fat	P8 Fat	IMF
+24	+32	+40	+53	+0.2	+23	+6.8	+0.5	+1.1	0.0
52%	55%	61%	50%	65%	46%	40%	50%	49%	51%

\$ Index Value

Term	Breed	Fert +
+\$65	+\$49	-\$12

PURCHASER: \_\_\_\_\_ \$ \_\_\_\_\_





Lot 12

BROAD LEAF V155

**DOB: 05-09-2023**

**AGE: 24 MONTHS**

**HERD BULL**

**Sire:** Rosevale Kingswood K296 (PS)

**Sire:** Rosevale Empire E464 (AI)

**Sire:** BROAD LEAF NOTTINGHAM N522 (P)

**Dam:** BROAD LEAF J27

**Dam:** Broad Leaf D190 (P)

**Dam:** Broad Leaf G224

Broad Leaf J27 had 8 calves recorded and was culled for age.

200D	400D	600D	Mat. Wt.	SS	Car. Wt	EMA	Rib Fat	P8 Fat	IMF
+13	+21	+31	+42	+1.9	+14	+4.0	+0.2	+0.7	+0.1
53%	56%	61%	51%	64%	46%	41%	50%	49%	51%

**\$ Index Value**

Term	Breed	Fert +
+\$51	+\$54	+\$23

**PURCHASER:** \_\_\_\_\_ **\$** \_\_\_\_\_



Lot 13

BROAD LEAF V41 (PP)

**DOB: 17-10-2023**

**AGE: 22 MONTHS**

**HERD BULL**

**Sire:** Rosevale Panama P372 (PP)

**Sire:** Greenup Lockyer L120 (P)

**Sire:** ROSEVALE STARKY S58 (PP)

**Dam:** BROAD LEAF P116

**Dam:** Rosevale Patricia P283 (P)

**Dam:** Broad Leaf G67

Broad Leaf P116 has recorded 4 calves, and is PTIC.

200D	400D	600D	Mat. Wt.	SS	Car. Wt	EMA	Rib Fat	P8 Fat	IMF
+15	+22	+27	+32	+0.3	+18	+4.5	-0.5	-0.2	-0.5
51%	49%	51%	46%	47%	41%	36%	41%	40%	42%

**\$ Index Value**

Term	Breed	Fert +
+\$40	+\$36	+\$3

**PURCHASER:** \_\_\_\_\_ **\$** \_\_\_\_\_





Lot 14

BROAD LEAF V44 (P)

DOB: 15-09-2023

AGE: 24 MONTHS

HERD BULL

Sire: Rosevale Panama P372 (PP)

Sire: Broad Leaf I61

Sire: ROSEVALE STARKY S58 (PP)

Dam: BROAD LEAF Q185 (P)

Dam: Rosevale Patricia P283 (P)

Dam: Broad Leaf L132

Broad Leaf Q185 (P) has recorded 2 calves in 2 years.

200D	400D	600D	Mat. Wt.	SS	Car. Wt	EMA	Rib Fat	P8 Fat	IMF
+19	+28	+38	+48	+0.4	+21	+5.8	-0.2	+0.2	-0.2
53%	55%	61%	51%	64%	46%	41%	49%	49%	51%

\$ Index Value

Term	Breed	Fert +
+\$63	+\$64	+\$27

PURCHASER: \_\_\_\_\_ \$ \_\_\_\_\_



Lot 15

BROAD LEAF V156 (P)

DOB: 08-11-2023

AGE: 22 MONTHS

HERD BULL

Sire: Rosevale Buster F500 (P)

Sire: Classified Santa Bull

Sire: BROAD LEAF S07 (P)

Dam: BROAD LEAF R111

Dam: Broad Leaf L40

Dam: BTD Santa Cow

200D	400D	600D	Mat. Wt.	SS	Car. Wt	EMA	Rib Fat	P8 Fat	IMF
+8	+12	+17	+25	-0.2	+6	-	+0.4	+1.2	0.0
47%	45%	47%	42%	42%	36%	-	36%	36%	37%

\$ Index Value

Term	Breed	Fert +
+\$27	+\$15	-\$11

PURCHASER: \_\_\_\_\_ \$ \_\_\_\_\_



Lot 16

BROAD LEAF V161 (P)

DOB: 12-09-2023

AGE: 24 MONTHS

HERD BULL

Sire: Rosevale Buster F500 (P)

Sire: Classified Santa Bull

Sire: BROAD LEAF S07 (P)

Dam: BTD SANTA COW

Dam: Broad Leaf L40

Dam: BTD Santa Cow

200D	400D	600D	Mat. Wt.	SS	Car. Wt	EMA	Rib Fat	P8 Fat	IMF
+7	+11	+14	+22	-1.1	+11	+4.5	-0.3	+0.4	-0.4
52%	55%	61%	50%	65%	46%	40%	50%	49%	51%

\$ Index Value

Term	Breed	Fert +
+\$28	+\$21	-\$15

PURCHASER: \_\_\_\_\_ \$ \_\_\_\_\_



# Countryco



**RURAL • HARDWARE • MINING SUPPLIES**  
**BLACKWATER**

**Lot 17**

**ROSEVALE STATESMAN V490 (P)**

**DOB: 26-10-2023**

**AGE: 22 MONTHS**

**S BULL**

**Sire:** Rosevale Majestic M176 (P)

**Sire:** Rosevale Jethro J208 (AI)(PS)

**Sire:** ROSEVALE STATESMAN S266 (P)

**Dam:** ROSEVALE ROSALINE R253

**Dam:** Rosevale Kylie P65 (P)

**Dam:** Rosevale Rosaline G287

Rosaline R253 has had three calves in three years and is PTIC. One of her sons sold for \$8,000. Rosaline G287 calved first as a two-year-old. She had nine calves in nine years before being PTE and sold. Six of these classified S, including five daughters retained in the herd. Balanced performance across the traits is a feature of this polled bull who is one of the youngest in the Rosevale draft.

200D	400D	600D	Mat. Wt.	SS	Car. Wt	EMA	Rib Fat	P8 Fat	IMF
+16	+25	+31	+50	+0.6	+13	+2.0	+2.1	+2.7	+0.5
67%	67%	69%	63%	69%	57%	53%	60%	59%	60%

**67%**

Term	Breed	Fert +
+\$54	+\$76	+\$84

**PURCHASER:** \_\_\_\_\_ **\$** \_\_\_\_\_





Lot 18

BROAD LEAF V60

**DOB: 17-10-2023**

**AGE: 22 MONTHS**

**HERD BULL**

**Sire:** Strathmore Nullarbor N644 (PP)

**Sire:** Broad Leaf Nottingham  
N522 (P)

**Sire:** BROAD LEAF NULLABOR R91 (P)

**Dam:** Broad Leaf M144

**Dam:** BROAD LEAF S49 (P)

**Dam:** BTD A122

Broad Leaf S49 (P) first calved as a 2 year old and is PTIC.

200D	400D	600D	Mat. Wt.	SS	Car. Wt	EMA	Rib Fat	P8 Fat	IMF
+10	+12	+17	+24	+1.0	+9	+2.5	+0.8	+1.0	+0.2
55%	57%	62%	52%	66%	48%	43%	52%	51%	53%

**\$ Index Value**

Term	Breed	Fert +
+\$31	+\$31	+\$18

**PURCHASER:** \_\_\_\_\_ **\$** \_\_\_\_\_





Lot 19

BROAD LEAF VULCAN V95 (P)

DOB: 12-10-2023

AGE: 23 MONTHS

S BULL

Sire: Strathmore Nullarbor N644 (PP)

Sire: Classified Santa Bull

Sire: BROAD LEAF NULLABOR R91 (P)

Dam: BROAD LEAF R147 (P)

Dam: Broad Leaf M144

Dam: Broad Leaf L47 (P)

Broad Leaf R147 (P) has recorded 2 calves in the last 2 years and is PTIC.

200D	400D	600D	Mat. Wt.	SS	Car. Wt	EMA	Rib Fat	P8 Fat	IMF
+18	+28	+34	+51	+1.5	+18	+3.9	+0.9	+1.3	+0.2
53%	56%	62%	51%	65%	46%	41%	50%	50%	52%

\$ Index Value

Term	Breed	Fert +
+\$57	+\$58	+\$30

PURCHASER: \_\_\_\_\_ \$ \_\_\_\_\_



Lot 20

BROAD LEAF VOLTAIRE V85 (PS)

DOB: 12-10-2023

AGE: 23 MONTHS

S BULL

Sire: Strathmore Nullarbor N644 (PP)

Sire: Broad Leaf L09

Sire: BROAD LEAF NULLABOR R91 (P)

Dam: BROAD LEAF R171 (P)

Dam: Broad Leaf M144

Dam: BTD Santa Cow

Broad Leaf R171 (P) has recorded 3 calves in the last 3 years and is PTIC.

200D	400D	600D	Mat. Wt.	SS	Car. Wt	EMA	Rib Fat	P8 Fat	IMF
+14	+20	+28	+42	+0.3	+15	+3.5	+0.8	+1.5	+0.2
51%	51%	53%	46%	52%	41%	37%	43%	43%	44%

\$ Index Value

Term	Breed	Fert +
+\$48	+\$46	+\$13

PURCHASER: \_\_\_\_\_

\$ \_\_\_\_\_



Lot 21

BROAD LEAF VOLLEY V124 (P)

DOB: 12-10-2023

AGE: 23 MONTHS

S BULL

Sire: Rosevale Kingswood K296 (PS)

Sire: Classified Santa Bull

Sire: BROAD LEAF NOTTINGHAM N522 (P)

Dam: BROAD LEAF L05 (P)

Dam: Broad Leaf D190 (P)

Dam: Broad Leaf E10

Broad Leaf L05 (P) has 5 calves recorded, and has been culled for age.

200D	400D	600D	Mat. Wt.	SS	Car. Wt	EMA	Rib Fat	P8 Fat	IMF
+7	+17	+19	+27	+2.1	+6	+3.0	+1.1	+1.1	+0.7
54%	57%	62%	52%	65%	48%	43%	51%	50%	53%

\$ Index Value

Term	Breed	Fert +
+\$45	+\$50	+\$38

PURCHASER: \_\_\_\_\_ \$ \_\_\_\_\_





Lot 22

BROAD LEAF VANDYKE V34 (PP)

DOB: 25-09-2023

AGE: 23 MONTHS

S BULL

Sire: Rosevale Jackaroo J566 (P)

Sire: Classified Santa Bull

Sire: BROAD LEAF QUINTON Q43 (AI) (P)

Dam: BROAD LEAF N159 (P)

Dam: Broad Leaf M89

Dam: BTD Santa Cow

Broad Leaf N159 (P) has 5 calves recorded and is PITC.

200D	400D	600D	Mat. Wt.	SS	Car. Wt	EMA	Rib Fat	P8 Fat	IMF
+6	+8	+1	+3	-0.4	+9	+2.7	+0.1	+0.8	0.0
54%	56%	61%	52%	64%	47%	43%	51%	50%	52%

\$ Index Value

Term	Breed	Fert +
+\$25	+\$18	-\$5

PURCHASER: \_\_\_\_\_

\$ \_\_\_\_\_





Lot 23

BROAD LEAF V110 (PP)

DOB: 11-09-2023

AGE: 24 MONTHS

HERD BULL

Sire: Broad Leaf Fitzroy F41

Sire: BROAD LEAF N04 (PS)

Dam: BTD Santa Cow

Sire: Greenup Lockyer L120 (P)

Dam: BROAD LEAF R81 (P)

Dam: Broad Leaf G52

Broad Leaf R81 (P) has recorded 3 calves in the last 3 years and is PTIC.

200D	400D	600D	Mat. Wt.	SS	Car. Wt	EMA	Rib Fat	P8 Fat	IMF
+2	+11	+12	+8	+0.3	0	+3.0	+2.1	+3.3	+1.0
49%	52%	58%	47%	62%	42%	37%	46%	46%	48%

\$ Index Value

Term	Breed	Fert +
+\$42	+\$59	+\$53

PURCHASER: \_\_\_\_\_

\$ \_\_\_\_\_



Lot 24

ROSEVALE REAL TIME V1010 (PS)

DOB: 21-09-2023

AGE: 23 MONTHS

HERD BULL

Sire: Gyranda For Real F136 (PS)

Sire: Rosevale Jeremiah J766 (P)

Sire: GYRANDA REAL TIME R280 (PS)

Dam: ROSEVALE S1175

Dam: Gyranda D237

Dam: Rosevale M611 (P)

S1175(P) has had two calves in two years and is PTIC. M611(P) has had seven calves in seven years and is PTIC.

200D	400D	600D	Mat. Wt.	SS	Car. Wt	EMA	Rib Fat	P8 Fat	IMF
+10	+19	+19	+37	+2.4	+10	+2.0	+0.9	+0.9	+0.2
57%	56%	57%	51%	67%	46%	43%	47%	46%	47%

\$ Index Value

Term	Breed	Fert +
+\$39	+\$49	+\$46

PURCHASER: \_\_\_\_\_

\$ \_\_\_\_\_



Lot 25

BROAD LEAF VANGUARD V06

DOB: 02-10-2023

AGE: 23 MONTHS

S BULL

Sire: Rosevale Major L520 (ET)(P)

Sire: Greenup Juggernaut J274 (PS)

Sire: ROSEVALE QUINN Q196 (P)

Dam: BROAD LEAF Q45 (P)

Dam: Rosevale Aurora H175 (P)

Dam: BTD Santa Cow

200D	400D	600D	Mat. Wt.	SS	Car. Wt	EMA	Rib Fat	P8 Fat	IMF
+11	+16	+27	+34	+2.7	+12	+3.4	+1.0	+0.7	0.0
56%	59%	63%	54%	65%	50%	45%	53%	52%	54%

\$ Index Value

Term	Breed	Fert +
+\$46	+\$66	+\$64

PURCHASER: \_\_\_\_\_ \$ \_\_\_\_\_



Lot 26

ROSEVALE VALENTINO V30

DOB: 14-09-2023

AGE: 24 MONTHS

S BULL

Sire: Rosevale Majestic M176 (P)

Sire: Gyranda Joker J156 (P)

Sire: ROSEVALE ROYAL R190 (P)

Dam: ROSEVALE EMILIA N63 (P)

Dam: Rosevale Jade M63

Dam: Rosevale Emilia K423 (P)

Emilia N63(P) calved first as a two-year-old and had seven calves in seven years. Her last calf died prior to branding so she was sold. Six of her calves classified 'S', including five daughters retained in the herd. Valentino V30 is a high performing bull whose EBVs have him ranked high in the breed across a wide range of traits. This ultimately ranks him in the top one percent of the breed for all three \$Indexes.

200D	400D	600D	Mat. Wt.	SS	Car. Wt	EMA	Rib Fat	P8 Fat	IMF
+23	+35	+58	+88	+1.7	+31	+6.1	+0.7	+0.6	-0.3
69%	70%	71%	65%	71%	59%	56%	62%	62%	63%

\$ Index Value

Term	Breed	Fert +
+\$90	+\$126	+\$108

PURCHASER: \_\_\_\_\_

\$ \_\_\_\_\_





Lot 27

ROSEVALE NOBLE V300

DOB: 09-10-2023

AGE: 23 MONTHS

S BULL

Sire: Eidsvold Station Noble N896 (AI)(P)

Sire: Rosevale Majestic M176 (P)

Sire: GREENUP Q206 (P)

Dam: ROSEVALE MARGOT R151

Dam: Greenup N225 (P)

Dam: Rosevale Margot L551 (P)

Margot R151 has had three calves in three years and is PTIC. Two have classified 'S' while her last is a weaner. Margot L551(P) calved first as a two-year-old and had six calves in six years. Four of these classified 'S', two sons sold to average \$9,500.

200D	400D	600D	Mat. Wt.	SS	Car. Wt	EMA	Rib Fat	P8 Fat	IMF
+12	+14	+25	+31	+0.3	+6	+0.6	+1.7	+2.1	+0.4
68%	69%	70%	64%	70%	58%	53%	62%	61%	48%

\$ Index Value

Term	Breed	Fert +
+\$35	+\$42	+\$42

PURCHASER: \_\_\_\_\_

\$ \_\_\_\_\_



Lot 28

BROAD LEAF VERNON V23

DOB: 19-09-2023

AGE: 23 MONTHS

S BULL

Sire: Rosevale Major L520 (ET)(P)

Sire: ROSEVALE QUINN Q196 (P)

Dam: Rosevale Aurora H175 (P)

Sire: Rosevale Buster F500 (P)

Dam: BROAD LEAF P62

Dam: Walker Santa Cow

Broad Leaf P62 has 3 calves recorded and is PTIC.

200D	400D	600D	Mat. Wt.	SS	Car. Wt	EMA	Rib Fat	P8 Fat	IMF
+17	+23	+34	+27	+1.4	+17	+4.5	+0.2	+0.5	-0.5
54%	57%	61%	52%	65%	48%	43%	51%	50%	52%

\$ Index Value

Term	Breed	Fert +
+\$45	+\$39	+\$3

PURCHASER: \_\_\_\_\_

\$ \_\_\_\_\_



Lot 29

ROSEVALE NATIONAL V1222 (PP)

DOB: 15-09-2023

AGE: 24 MONTHS

HERD BULL

Sire: Rosevale National N836 (P)

Sire: Rosevale Jeremiah J766

Sire: ROSEVALE NATIONAL T962 (P)

Dam: ROSEVALE Q1079 (P)

Dam: Rosevale K689

Dam: Multiple

Q1079(P) has had four calves in four years and is PTIC. One of her sons sold for \$8,000. V1222's pedigree goes back to a Hicks/ABC bull that was used in our herd. He is typical of the bulls we breed with a touch of composite blood - polled, trim sheathed, meaty and functional.

200D	400D	600D	Mat. Wt.	SS	Car. Wt	EMA	Rib Fat	P8 Fat	IMF
+10	+15	+19	+30	+1.2	-	-	-	-	-
42%	40%	41%	37%	64%	-	-	-	-	-

\$ Index Value

Term	Breed	Fert +
+\$42	+\$55	+\$30

PURCHASER: \_\_\_\_\_ \$ \_\_\_\_\_





Lot 30

BROAD LEAF VOLTAGE V78 (PP)

DOB: 23-10-2023

AGE: 22 MONTHS

S BULL

Sire: Strathmore Nullarbor N644 (PP)    Sire: Greenup Juggernaut J274 (PS)

Sire: BROAD LEAF NULLABOR R91 (P)    Dam: BROAD LEAF R39 (P)

Dam: Broad Leaf M144                      Dam: Broad Leaf H2

Broad Leaf R39 (P) has recorded 2 calves in the last 2 years and is PTIC.

200D	400D	600D	Mat. Wt.	SS	Car. Wt	EMA	Rib Fat	P8 Fat	IMF
+14	+19	+23	+35	-0.3	+13	+3.0	+0.6	+1.1	+0.4
54%	57%	62%	52%	66%	47%	42%	51%	50%	52%

\$ Index Value

Term	Breed	Fert +
+\$40	+\$40	+\$20

PURCHASER: \_\_\_\_\_

\$ \_\_\_\_\_





Lot 31

BROAD LEAF V164 (P)

**DOB: 23-09-2023**

**AGE: 23 MONTHS**

**HERD BULL**

**Sire:** Greenup Lockyer L120 (P)

**Sire:** Classified Santa Bull

**Sire:** BROAD LEAF STANAGE S81 (P)

**Dam:** BROAD LEAF R129

**Dam:** Broad Leaf N168 (PS)

**Dam:** BTD Santa Cow

Broad Leaf R129 has her first calf in this sale.

200D	400D	600D	Mat. Wt.	SS	Car. Wt	EMA	Rib Fat	P8 Fat	IMF
+8	+16	+18	+20	+0.4	+7	+4.1	+1.1	+2.1	+0.7
49%	52%	58%	47%	62%	42%	36%	45%	45%	47%

\$ Index Value

Term	Breed	Fert +
+\$46	+\$50	+\$25

PURCHASER: \_\_\_\_\_ \$ \_\_\_\_\_



Lot 32

BROAD LEAF VANCOUVER V197

DOB: 16-12-2023

AGE: 20 MONTHS

S BULL

Sire: Rowanlea Dinkum D56

Sire: Classified Santa Bull

Sire: BROAD LEAF L09

Dam: BROAD LEAF L71

Dam: Broad Leaf 60

Dam: Broad Leaf C12

200D	400D	600D	Mat. Wt.	SS	Car. Wt	EMA	Rib Fat	P8 Fat	IMF
+20	+30	+43	+64	+0.6	+21	-	+0.1	+0.8	-0.3
46%	49%	56%	45%	60%	40%	-	44%	43%	46%

\$ Index Value

Term	Breed	Fert +
+\$66	+\$67	+\$22

PURCHASER: \_\_\_\_\_ \$ \_\_\_\_\_



**Nutri-Lick**  
Livestock Feed Supplements

CALL NUTRI-LICK TODAY  
**07 4623 1141**

**CUSTOM MIXED**

DRY LICK SUPPLEMENTS & CONCENTRATES  
FOR CATTLE, SHEEP, GOATS & HORSES,  
INCLUDING STUD STOCK, WEANING &  
PRODUCTION FEEDING

**EXPERIENCED NUTRITIONIST**

AVAILABLE FOR ON-PROPERTY  
VISITS & CONSULTANCY

**100% AUSTRALIAN**

OWNED BY THE JONES FAMILY  
IN MITCHELL, QLD

**ON FARM DELIVERY**

FOR LARGER ORDERS





Lot 33

ROSEVALE ROYAL V22 (AI)

DOB: 15-09-2023

AGE: 24 MONTHS

S BULL

Sire: Rosevale Majestic M176 (P)

Sire: Kuloomba Peter 444 (P)

Sire: ROSEVALE ROYAL R190 (P)

Dam: ROSEVALE GARLAND R535 (P)

Dam: Rosevale Jade M63

Dam: Rosevale Garland G251 (PS)

Garland R535(P) has had three calves in three years and is PTIC. Two have classified 'S', her last is a weaner. Garland G251(PS) calved first as a two-year-old and had nine calves in nine years before being culled for age. Four of her progeny classified 'S', four sons sold to average \$8,625.

200D	400D	600D	Mat. Wt.	SS	Car. Wt	EMA	Rib Fat	P8 Fat	IMF
+13	+24	+37	+56	+1.2	+17	+3.4	+0.6	+0.3	-0.1
68%	69%	70%	64%	70%	58%	54%	61%	60%	61%

\$ Index Value									
Term				Breed			Fert +		
+\$57				+\$66			+\$56		

PURCHASER: \_\_\_\_\_ \$ \_\_\_\_\_





Lot 34

BROAD LEAF V168

**DOB: 05-10-2023**

**AGE: 23 MONTHS**

**HERD BULL**

**Sire:** Wightfields Downpour G21 (P)

**Sire:** Classified Santa Bull

**Sire:** ROSEVALE KINGSWOOD K296 (PS)

**Dam:** BTD SANTA COW

**Dam:** Rosevale Jade E407 (P)

**Dam:** BTD Santa Cow

200D	400D	600D	Mat. Wt.	SS	Car. Wt	EMA	Rib Fat	P8 Fat	IMF
+1	+2	-1	+12	+1.7	+8	+4.1	-0.3	-0.5	-0.2
54%	56%	61%	52%	64%	48%	44%	51%	51%	53%

**\$ Index Value**

Term	Breed	Fert +
+\$19	+\$24	+\$3

**PURCHASER:** \_\_\_\_\_ **\$** \_\_\_\_\_



Lot 35

BROAD LEAF V68

DOB:29-10-2023

AGE: 22 MONTHS

HERD BULL

Sire: Strathmore Nullarbor N644 (PP)    Sire: Greenup Lockyer L120 (P)

Sire: BROAD LEAF NULLABOR R91 (P)    Dam: BROAD LEAF S179

Dam: Broad Leaf M144                      Dam: Broad Leaf J150

Broad Leaf S179 has recorded 2 calves in the last 2 years and is PTIC.

200D	400D	600D	Mat. Wt.	SS	Car. Wt	EMA	Rib Fat	P8 Fat	IMF
+21	+28	+39	+45	+0.1	+18	+4.8	+1.7	+2.6	+0.6
52%	55%	61%	50%	64%	45%	40%	49%	49%	51%

\$ Index Value

Term	Breed	Fert +
+\$65	+\$59	+\$22

PURCHASER: \_\_\_\_\_

\$ \_\_\_\_\_



Lot 36

BROAD LEAF V178

DOB: 12-09-2023

AGE: 24 MONTHS

HERD BULL

Sire: Wightfields Downpour G21 (P)

Sire: Broad Leaf Fitzroy F41

Sire: ROSEVALE KINGSWOOD K296 (PS)

Dam: BROAD LEAF M75

Dam: Rosevale Jade E407 (P)

Dam: Broad Leaf 164

Broad Leaf M75 has 4 calves recorded in the last 6 years. Culled for age.

200D	400D	600D	Mat. Wt.	SS	Car. Wt	EMA	Rib Fat	P8 Fat	IMF
+13	+23	+30	+41	+1.1	+18	+4.7	-1.6	-1.9	-0.6
54%	56%	61%	52%	64%	48%	44%	51%	51%	53%

\$ Index Value

Term	Breed	Fert +
+\$42	+\$30	-\$20

PURCHASER: \_\_\_\_\_

\$ \_\_\_\_\_





Lot 37

BROAD LEAF V20

DOB: 08-10-2023

AGE: 23 MONTHS

HERD BULL

Sire: Rosevale Panama P372 (PP)

Sire: Broad Leaf I38

Sire: ROSEVALE STARKSY S58 (PP)

Dam: BROAD LEAF Q157

Dam: Rosevale Patricia P283 (P)

Dam: Broad Leaf F34

Broad Leaf Q157 has recorded 3 calves and is PTIC.

200D	400D	600D	Mat. Wt.	SS	Car. Wt	EMA	Rib Fat	P8 Fat	IMF
+23	+38	+54	+84	+0.2	+29	+4.8	-0.7	-0.6	-0.5
54%	56%	61%	52%	64%	47%	42%	50%	50%	52%

\$ Index Value

Term	Breed	Fert +
+\$72	+\$75	+\$43

PURCHASER: \_\_\_\_\_

\$ \_\_\_\_\_





Lot 38

BROAD LEAF V146 (P)

DOB: 29-09-2023

AGE: 23 MONTHS

HERD BULL

Sire: Wightfields Downpour G21 (P)

Sire: Rosevale Buster F500 (P)

Sire: ROSEVALE KINGSWOOD K296 (PS)

Dam: BROAD LEAF M57

Dam: Rosevale Jade E407 (P)

Dam: Broad Leaf 16

Broad Leaf M57 has recorded 5 calves in the last 7 years, and is PTIC.

200D	400D	600D	Mat. Wt.	SS	Car. Wt	EMA	Rib Fat	P8 Fat	IMF
+16	+27	+36	+57	+1.5	+22	+5.3	-1.2	-1.7	-0.4
55%	54%	55%	51%	52%	46%	42%	46%	46%	47%

\$ Index Value

Term	Breed	Fert +
+\$60	+\$58	+\$18

PURCHASER: \_\_\_\_\_ \$ \_\_\_\_\_



Lot 39

BROAD LEAF VIGARO V54

DOB: 30-11-2023      AGE: 21 MONTHS      S BULL

Sire: Strathmore Nullarbor N644 (PP)      Sire: Classified Santa Bull  
Sire: BROAD LEAF NULLABOR R91 (P)      Dam: BROAD LEAF S108  
Dam: Broad Leaf M144      Dam: Broad Leaf J104

Broad Leaf S108 calved as a 2 year old. She has 3 calves recorded in 3 years and is PTIC.

200D	400D	600D	Mat. Wt.	SS	Car. Wt	EMA	Rib Fat	P8 Fat	IMF
+16	+24	+35	+46	+0.6	+15	+4.8	+1.1	+1.8	+0.5
53%	56%	62%	51%	65%	46%	41%	51%	50%	52%

\$ Index Value

Term	Breed	Fert +
+\$61	+\$62	+\$27

PURCHASER: \_\_\_\_\_ \$ \_\_\_\_\_



Lot 40

BROAD LEAF VAGRANT V200 (P)

DOB: 16-12-2023

AGE: 20 MONTHS

S BULL

Sire: Rosevale Jethro J208 (AI)(PS)

Sire: Rosevale Hockenheim H196 (P)

Sire: GYRANDA RYDER R544 (AI) (P)

Dam: BROAD LEAF M27 (P)

Dam: Gyranda L201 (P)

Dam: Broad Leaf G226 (P)

Broad Leaf M27 (P) had 4 calves recorded, PTE and was sold.

200D	400D	600D	Mat. Wt.	SS	Car. Wt	EMA	Rib Fat	P8 Fat	IMF
+14	+26	+34	+32	+1.5	+11	+5.2	+1.7	+2.3	+0.5
53%	52%	53%	49%	65%	43%	43%	50%	50%	52%

\$ Index Value

Term	Breed	Fert +
+\$62	+\$70	+\$47

PURCHASER: \_\_\_\_\_

\$ \_\_\_\_\_





Lot 41

BROAD LEAF V104 (P)

**DOB: 02-09-2023**

**AGE: 24 MONTHS**

**HERD BULL**

**Sire:** Broad Leaf Fitzroy F41

**Sire:** Classified Santa Bull

**Sire:** BROAD LEAF N04 (PS)

**Dam:** BROAD LEAF J131

**Dam:** BTD Santa Cow

**Dam:** Broad Leaf A20

Broad Leaf J131 has recorded 9 calves and is PTIC. Broad Leaf A20 was a foundation cow in our stud herd, who recorded her last calf at 16 years of age.

200D	400D	600D	Mat. Wt.	SS	Car. Wt	EMA	Rib Fat	P8 Fat	IMF
+7	+11	+16	+27	-0.7	+9	-	+0.1	+0.4	+0.3
47%	50%	57%	45%	61%	40%	-	44%	43%	46%

\$ Index Value

Term	Breed	Fert +
+\$32	+\$34	+\$24

PURCHASER: \_\_\_\_\_ \$ \_\_\_\_\_





Lot 42

BROAD LEAF VI50 (P)

**DOB: 13-09-2023**

**AGE: 24 MONTHS**

**HERD BULL**

**Sire:** Broad Leaf Fitzroy F41

**Sire:** Classified Santa Bull

**Sire:** BROAD LEAF N04 (PS)

**Dam:** BROAD LEAF J45

**Dam:** BTD Santa Cow

**Dam:** Broad Leaf 153

Broad Leaf J45 has recorded 6 calves in 7 years.

200D	400D	600D	Mat. Wt.	SS	Car. Wt	EMA	Rib Fat	P8 Fat	IMF
+15	+22	+29	+38	+0.1	+21	-	-0.3	+0.5	+0.2
46%	49%	57%	44%	60%	39%	-	43%	43%	45%

\$ Index Value

Term	Breed	Fert +
+\$44	+\$35	+\$7

PURCHASER: \_\_\_\_\_ \$ \_\_\_\_\_



Lot 43

BROAD LEAF VINCENT V103 (P)

DOB: 28-11-2023

AGE: 21 MONTHS

S BULL

Sire: Dangarfield Tycoon (P)

Sire: Rowanlea Dinkum D56

Sire: GREENUP LOCKYER L120 (P)

Dam: BROAD LEAF H52

Dam: Greenup Asha A93 (P)

Dam: Broad Leaf 51

Broad Leaf H52 was culled for age at 13.

200D	400D	600D	Mat. Wt.	SS	Car. Wt	EMA	Rib Fat	P8 Fat	IMF
+15	+26	+31	+36	+0.5	+13	+3.2	+0.3	+0.4	+0.2
56%	59%	63%	54%	66%	50%	46%	53%	53%	54%

\$ Index Value

Term	Breed	Fert +
+\$48	+\$50	+\$30

PURCHASER: \_\_\_\_\_

\$ \_\_\_\_\_



Lot 44

BROAD LEAF V163 (P)

DOB: 04-10-2023

AGE: 23 MONTHS

HERD BULL

Sire: Greenup Lockyer L120 (P)

Sire: Classified Santa Bull

Sire: BROAD LEAF STANAGE S81 (P)

Dam: BTD SANTA COW

Dam: Broad Leaf N168 (PS)

Dam: BTD Santa Cow

200D	400D	600D	Mat. Wt.	SS	Car. Wt	EMA	Rib Fat	P8 Fat	IMF
+1	+5	+3	+6	0.0	+5	+3.3	+0.3	+0.9	+0.3
49%	51%	58%	47%	61%	42%	35%	45%	44%	47%

\$ Index Value

Term	Breed	Fert +
+\$24	+\$31	+\$25

PURCHASER: \_\_\_\_\_ \$ \_\_\_\_\_





Lot 45

BROAD LEAF VECTOR V80 (P)

DOB: 29-10-2023      AGE: 22 MONTHS      S BULL

**Sire:** Rosevale Jethro J208 (AI)(PS)      **Sire:** Broad Leaf I38  
**Sire:** GYRANDA RYDER R544 (AI) (P)      **Dam:** BROAD LEAF R167  
**Dam:** Gyranda L201 (P)      **Dam:** BTD Santa Cow

Broad Leaf R167 has recorded 3 calves in the last 3 years and is PTIC.

200D	400D	600D	Mat. Wt.	SS	Car. Wt	EMA	Rib Fat	P8 Fat	IMF
+13	+28	+38	+55	+2.6	+15	+2.4	+0.7	+0.8	+0.6
55%	57%	62%	53%	65%	49%	44%	52%	52%	53%

\$ Index Value

Term	Breed	Fert +
+\$65	+\$75	+\$66

PURCHASER: \_\_\_\_\_ \$ \_\_\_\_\_





Lot 46

BROAD LEAF VELCRO V84 (PP)

DOB: 18-09-2023

AGE: 23 MONTHS

S BULL

Sire: Rosevale Jethro J208 (AI)(PS)

Sire: Classified Santa Bull

Sire: GYRANDA RYDER R544 (AI) (P)

Dam: BROAD LEAF R06 (P)

Dam: Gyranda L201 (P)

Dam: BTD Santa Cow

Broad Leaf R06 (P) has recorded 3 calves in 3 years, and is PTIC.

200D	400D	600D	Mat. Wt.	SS	Car. Wt	EMA	Rib Fat	P8 Fat	IMF
+18	+30	+44	+46	+1.9	+17	+5.2	+0.9	+1.4	+0.4
54%	54%	54%	50%	51%	45%	41%	46%	45%	46%

\$ Index Value

Term	Breed	Fert +
+\$69	+\$73	+\$50

PURCHASER: \_\_\_\_\_

\$ \_\_\_\_\_



Lot 47

BROAD LEAF VOYAGER V29

DOB: 03-09-2023      AGE: 24 MONTHS      S BULL

Sire: Rosevale Major L520 (ET)(P)      Sire: Broad Leaf Fitzroy F41  
Sire: ROSEVALE QUINN Q196 (P)      Dam: BROAD LEAF N164  
Dam: Rosevale Aurora H175 (P)      Dam: BTD Santa Cow

Broad Leaf N164 has 4 calves recorded in the last 4 years.

200D	400D	600D	Mat. Wt.	SS	Car. Wt	EMA	Rib Fat	P8 Fat	IMF
+15	+21	+29	+27	+0.4	+16	+4.4	-0.1	+0.2	-0.3
56%	58%	63%	54%	65%	49%	45%	53%	41%	54%

\$ Index Value

Term	Breed	Fert +
+\$43	+\$52	+\$32

PURCHASER: \_\_\_\_\_ \$ \_\_\_\_\_



Lot 48

BROAD LEAF VATICAN V32

DOB: 05-09-2023

AGE: 24 MONTHS

S BULL

Sire: Rosevale Major L520 (ET)(P)

Sire: Classified Santa Bull

Sire: ROSEVALE QUINN Q196 (P)

Dam: BTD SANTA COW

Dam: Rosevale Aurora H175 (P)

Dam: BTD Santa Cow

Broad Leaf Q251 was graded up from the commercial herd. She has recorded 3 calves in the last 3 years and is PTIC.

200D	400D	600D	Mat. Wt.	SS	Car. Wt	EMA	Rib Fat	P8 Fat	IMF
+7	+7	+13	+22	-0.4	+5	+2.4	+1.4	+1.9	+0.6
55%	57%	62%	53%	65%	48%	43%	51%	51%	53%

\$ Index Value

Term	Breed	Fert +
+\$32	+\$38	+\$37

PURCHASER: \_\_\_\_\_

\$ \_\_\_\_\_





Lot 49

ROSEVALE EMPIRE V1168 (PP)

DOB: 01-10-2023

AGE: 23 MONTHS

HERD BULL

Sire: Rosevale Empire E464

Sire: Multiple

Sire: ROSEVALE EMPIRE P72 (PS)

Dam: ROSEVALE COW

Dam: Rosevale Ethel F89 (P)

Dam: Multiple

Empire V1168(PP) is a slick, dark coated, trim sheathed, homozygous polled bull. Parentage in our commercial herd is determined through DNA. Unfortunately in the case of this bull his dam could not be identified.

200D	400D	600D	Mat. Wt.	SS	Car. Wt	EMA	Rib Fat	P8 Fat	IMF
+6	+8	+12	+7	+0.4	+7	+2.4	+0.1	+0.4	+0.1
58%	57%	58%	55%	67%	48%	45%	49%	48%	49%

\$ Index Value

Term	Breed	Fert +
+\$29	+\$47	+\$50

PURCHASER: \_\_\_\_\_ \$ \_\_\_\_\_





Lot 50

BROAD LEAF V126

**DOB: 13-10-2023**

**AGE: 23 MONTHS**

**HERD BULL**

**Sire:** Wightfields Downpour G21 (P)

**Sire:** Broad Leaf Fergus F40

**Sire:** ROSEVALE KINGSWOOD K296 (PS)

**Dam:** BROAD LEAF M68

**Dam:** Rosevale Jade E407 (P)

**Dam:** Broad Leaf F12

Broad Leaf M68 has recorded 5 calves and has PTIC.

200D	400D	600D	Mat. Wt.	SS	Car. Wt	EMA	Rib Fat	P8 Fat	IMF
+8	+15	+13	+26	+1.9	+14	+4.0	-0.4	-0.9	-0.3
55%	58%	63%	54%	65%	50%	45%	53%	52%	54%

\$ Index Value

Term	Breed	Fert +
+\$35	+\$45	+\$22

PURCHASER: \_\_\_\_\_ \$ \_\_\_\_\_



Lot 51

BROAD LEAF VI34 (P)

DOB: 03-10-2023

AGE: 23 MONTHS

HERD BULL

Sire: Wightfields Downpour G21 (P)

Sire: Classified Santa Bull

Sire: ROSEVALE KINGSWOOD K296 (PS)

Dam: BROAD LEAF L132

Dam: Rosevale Jade E407 (P)

Dam: BTD Santa Cow

Broad Leaf L132 recorded 6 calves, was PTE and sold.

200D	400D	600D	Mat. Wt.	SS	Car. Wt	EMA	Rib Fat	P8 Fat	IMF
+4	+12	+15	+14	+1.9	+2	-	+1.5	+2.1	+0.5
46%	49%	56%	44%	60%	39%	-	43%	42%	45%

\$ Index Value

Term	Breed	Fert +
+\$35	+\$36	+\$16

PURCHASER: \_\_\_\_\_ \$ \_\_\_\_\_



Lot 52

BROAD LEAF V184 (P)

DOB: 04-01-2024

AGE: 20 MONTHS

HERD BULL

Sire: Rosevale Kingswood K296 (PS)

Sire: Rosevale Kingswood K296 (PS)

Sire: BROAD LEAF NOTTINGHAM N522 (P)

Dam: BROAD LEAF N72

Dam: Broad Leaf D190 (P)

Dam: Broad Leaf L115

200D	400D	600D	Mat. Wt.	SS	Car. Wt	EMA	Rib Fat	P8 Fat	IMF
+10	+14	+22	+25	+1.4	+6	+3.5	+0.7	+1.1	+0.1
50%	49%	50%	45%	48%	41%	36%	41%	41%	42%

\$ Index Value

Term	Breed	Fert +
+\$34	+\$29	+\$3

PURCHASER: \_\_\_\_\_ \$ \_\_\_\_\_





Lot 53

BROAD LEAF V162 (P)

**DOB: 17-11-2023**

**AGE: 21 MONTHS**

**HERD BULL**

**Sire:** Rosevale Buster F500 (P)

**Sire:** Classified Santa Bull

**Sire:** BROAD LEAF S07 (P)

**Dam:** BTD SANTA COW

**Dam:** Broad Leaf L40

**Dam:** BTD Santa Cow

Broad Leaf M57 has recorded 5 calves and is PTIC.

200D	400D	600D	Mat. Wt.	SS	Car. Wt	EMA	Rib Fat	P8 Fat	IMF
+7	+10	+15	+20	+0.4	+8	+3.1	-0.1	+0.4	-0.2
50%	53%	59%	48%	62%	42%	38%	47%	46%	49%

**\$ Index Value**

Term	Breed	Fert +
+\$26	+\$20	-\$4

**PURCHASER:** \_\_\_\_\_ **\$** \_\_\_\_\_





Lot 54

BROAD LEAF VIRGO V65 (P)

**DOB: 12-09-2023**

**AGE: 24 MONTHS**

**S BULL**

**Sire:** Rosevale Jethro J208 (AI)(PS)

**Sire:** Broad Leaf N77 (P)

**Sire:** GYRANDA RYDER R544 (AI) (P)

**Dam:** BROAD LEAF S124 (P)

**Dam:** Gyranda L201 (P)

**Dam:** Gyranda K657

Broad Leaf S124 (P) has recorded 2 calves in the last 2 years and is PTIC.

200D	400D	600D	Mat. Wt.	SS	Car. Wt	EMA	Rib Fat	P8 Fat	IMF
+14	+23	+32	+22	0.0	+8	+4.1	+1.5	+2.1	+0.4
55%	57%	62%	53%	65%	49%	44%	52%	51%	53%

\$ Index Value

Term	Breed	Fert +
+\$52	+\$55	+\$27

PURCHASER: \_\_\_\_\_ \$ \_\_\_\_\_



Lot 55

BROAD LEAF V199 (P)

DOB: 16-12-2023

AGE: 20 MONTHS

HERD BULL

Sire: Wightfields Downpour G21 (P)

Sire: Classified Santa Bull

Sire: ROSEVALE KINGSWOOD K296 (PS)

Dam: BROAD LEAF M110

Dam: Rosevale Jade E407 (P)

Dam: Broad Leaf I31

Broad Leaf M110 has recorded 3 calves.

200D	400D	600D	Mat. Wt.	SS	Car. Wt	EMA	Rib Fat	P8 Fat	IMF
+6	+15	+18	+18	+1.3	+14	+5.7	+0.2	+0.1	-0.5
52%	55%	61%	50%	65%	46%	40%	50%	49%	51%

\$ Index Value

Term	Breed	Fert +
+\$43	+\$59	+\$24

PURCHASER: \_\_\_\_\_ \$ \_\_\_\_\_



Lot 56

ROSEVALE POKEMON V1186 (PP)

**DOB: 15-11-2023**

**AGE: 22 MONTHS**

**HERD BULL**

**Sire:** Rosevale Gallipoli K468 (P)

**Sire:** Hallcraig Longroad L66 (AI)(P)

**Sire:** GREENUP POKEMON P368 (P)

**Dam:** ROSEVALE Q977 (P)

**Dam:** Greenup Anna H9 (P)

**Dam:** Rosevale L859 (P)

Q977(P) calved first as a two-year-old. She had four calves in four years before being PTE and sold. One of her sons sold for breeding. L859(P) calved first as a two-year-old. She had ten calves in nine years (including a set of twins) before being sold due to age.

200D	400D	600D	Mat. Wt.	SS	Car. Wt	EMA	Rib Fat	P8 Fat	IMF
+9	+17	+20	+28	+1.4	+11	+3.4	+0.7	+1.0	+0.3
52%	51%	50%	46%	58%	42%	37%	41%	41%	39%

**\$ Index Value**

Term	Breed	Fert +
+\$43	+\$50	+\$33

**PURCHASER:** \_\_\_\_\_ **\$** \_\_\_\_\_





Lot 57

BROAD LEAF VI90 (P)

**DOB: 18-12-2023      AGE: 20 MONTHS      HERD BULL**

**Sire:** Rosevale Kingswood K296 (PS)      **Sire:** Gyranda D802 (P)  
**Sire:** BROAD LEAF NOTTINGHAM N522 (P)      **Dam:** BROAD LEAF J14 (AI)  
**Dam:** Broad Leaf D190 (P)      **Dam:** BTD Santa Cow

Broad Leaf J14 has recorded 5 calves, and been culled for age.

200D	400D	600D	Mat. Wt.	SS	Car. Wt	EMA	Rib Fat	P8 Fat	IMF
+11	+13	+19	+15	+1.1	+11	+4.7	+0.6	+1.1	0.0
53%	56%	61%	51%	64%	46%	41%	50%	49%	52%

\$ Index Value

Term	Breed	Fert +
+\$36	+\$37	+\$3

**PURCHASER:** \_\_\_\_\_ **\$** \_\_\_\_\_





Lot 58

ROSEVALE NOAH V1676 (PP)

DOB: 22-10-2023      AGE: 22 MONTHS      S BULL

**Sire:** Rosevale Noah N50 (PP)      **Sire:** Gyranda Newton N202 (PP)  
**Sire:** ROSEVALE NOAH S202 (PP)      **Dam:** BIARA 1254 (P)  
**Dam:** Rosevale Haidee K233 (P)      **Dam:** Rosevale Autumn M327 (P)

Biara 1254 is a young cow who has had two calves in two years. Autumn M327(P) has had seven calves in seven years. Three of these have classified S.

200D	400D	600D	Mat. Wt.	SS	Car. Wt	EMA	Rib Fat	P8 Fat	IMF
+9	+19	+29	+29	+1.9	+10	+3.3	+1.2	+1.5	+0.1
63%	65%	66%	60%	67%	54%	50%	56%	55%	57%

\$ Index Value

Term	Breed	Fert +
+\$49	+\$71	+\$73

PURCHASER: \_\_\_\_\_ \$ \_\_\_\_\_



Lot 59

BROAD LEAF V27 (P)

DOB: 18-09-2023

AGE: 23 MONTHS

HERD BULL

Sire: Rosevale Panama P372 (PP)

Sire: ROSEVALE STARKSY S58 (PP)

Dam: Rosevale Patricia P283 (P)

Sire: Broad Leaf Fitzroy F41

Dam: BROAD LEAF N54

Dam: Broad Leaf D29

Broad Leaf N54 is PTIC and is active in the herd.

200D	400D	600D	Mat. Wt.	SS	Car. Wt	EMA	Rib Fat	P8 Fat	IMF
+6	+11	+15	+14	+1.4	+5	+2.8	+1.0	+1.5	+0.3
54%	57%	62%	53%	65%	48%	42%	51%	50%	52%

\$ Index Value

Term	Breed	Fert +
+\$34	+\$49	+\$55

PURCHASER: \_\_\_\_\_

\$ \_\_\_\_\_



Lot 60

BROAD LEAF VLADIMER V89

DOB: 26-10-2023

AGE: 22 MONTHS

S BULL

**Sire:** Strathmore Nullarbor N644 (PP)    **Sire:** Greenup Juggernaut J274 (PS)

**Sire:** BROAD LEAF NULLABOR R91 (P)    **Dam:** BROAD LEAF R76

**Dam:** Broad Leaf M144

**Dam:** Broad Leaf I08

Broad Leaf R76 (P) has recorded 2 calves in the last 2 years and is PTIC.

200D	400D	600D	Mat. Wt.	SS	Car. Wt	EMA	Rib Fat	P8 Fat	IMF
+11	+16	+24	+27	+0.8	+11	+4.3	+0.3	+0.8	-0.1
41%	51%	58%	46%	61%	41%	36%	45%	45%	47%

\$ Index Value

Term	Breed	Fert +
+\$38	+\$39	+\$9

PURCHASER: \_\_\_\_\_ \$ \_\_\_\_\_

RURAL LANDS  
CREATIVE BRANDS

Contact

0437 834184

Instagram

@herdmediamarketing

Lot 61

BROAD LEAF VAULK V175 (PP)

DOB: 29-10-2023

AGE: 22 MONTHS

S BULL

**Sire:** Rosevale Jackaroo J566 (P)**Sire:** Classified Santa Bull**Sire:** BROAD LEAF QUINTON Q43 (AI) (P)**Dam:** BROAD LEAF R156 (P)**Dam:** Broad Leaf M89**Dam:** BTD Santa Cow

Broad Leaf R156 (P) has recorded 2 calves in the last 2 years and is PTIC.

200D	400D	600D	Mat. Wt.	SS	Car. Wt	EMA	Rib Fat	P8 Fat	IMF
+12	+20	+27	+42	+1.5	+11	+1.4	+0.6	+1.4	+0.3
54%	57%	62%	52%	64%	48%	43%	51%	50%	53%

## \$ Index Value

Term	Breed	Fert +
+\$38	+\$35	+\$21

PURCHASER: \_\_\_\_\_ \$ \_\_\_\_\_





Lot 62

ROSEVALE NOAH V1668 (P)

DOB: 14-10-2023

AGE: 23 MONTHS

HERD BULL

Sire: Rosevale Noah N50 (PP)

Sire: Rosevale Qantas Q172 (AI)(P)

Sire: ROSEVALE NOAH S202 (PP)

Dam: BIARA 1239

Dam: Rosevale Haidee K233 (P)

Dam: Rosevale Ultimate H641 (P)

Biara 1239 is a young cow who has had two calves in two years. Ultimate H641(P) had ten calves in ten years before being PTE and sold. Six of these have classified S. Four sons have sold to average \$7,125.

200D	400D	600D	Mat. Wt.	SS	Car. Wt	EMA	Rib Fat	P8 Fat	IMF
+11	+20	+35	+51	+1.8	+12	+1.8	+0.9	+1.1	0.0
64%	65%	67%	60%	68%	55%	50%	56%	56%	57%

\$ Index Value

Term	Breed	Fert +
+\$53	+\$82	+\$84

PURCHASER: \_\_\_\_\_

\$ \_\_\_\_\_



Lot 63

BROAD LEAF V45 (P)

DOB: 03-10-2023

AGE: 23 MONTHS

HERD BULL

**Sire:** Rosevale Major L520 (ET)(P)

**Sire:** Greenup Lockyer L120 (P)

**Sire:** ROSEVALE QUINN Q196 (P)

**Dam:** BROAD LEAF P25 (PP)

**Dam:** Rosevale Aurora H175 (P)

**Dam:** Broad Leaf H83

Broad Leaf P25 (PP) has recorded 4 calves in the last 4 years, and is PTIC

200D	400D	600D	Mat. Wt.	SS	Car. Wt	EMA	Rib Fat	P8 Fat	IMF
+6	+11	+13	+14	-0.9	+5	+2.2	+0.9	+1.3	+0.2
57%	59%	63%	55%	66%	51%	46%	54%	53%	55%

\$ Index Value

Term	Breed	Fert +
+\$26	+\$31	+\$24

PURCHASER: \_\_\_\_\_ \$ \_\_\_\_\_



Lot 64

BROAD LEAF VISTA V90 (P)

DOB: 3-11-2023      AGE: 22 MONTHS      S BULL

Sire: Strathmore Nullarbor N644 (PP)      Sire: Classified Santa Bull  
Sire: BROAD LEAF NULLABOR R91 (P)      Dam: BROAD LEAF R104 (P)  
Dam: Broad Leaf M144      Dam: Broad Leaf E204

Broad Leaf R104 (P) has recorded 2 calves in the last 2 years and is PTIC.

200D	400D	600D	Mat. Wt.	SS	Car. Wt	EMA	Rib Fat	P8 Fat	IMF
+7	+17	+15	+30	-0.4	+7	+3.0	+2.2	+3.3	+1.2
53%	56%	61%	51%	65%	46%	41%	50%	50%	52%

\$ Index Value

Term	Breed	Fert +
+\$52	+\$61	+\$49

PURCHASER: \_\_\_\_\_ \$ \_\_\_\_\_





Lot 65

BROAD LEAF VARSITY V39

DOB: 29-11-2023      AGE: 21 MONTHS      S BULL

Sire: Rosevale Major L520 (ET)(P)      Sire: Classified Santa Bull  
Sire: ROSEVALE QUINN Q196 (P)      Dam: BROAD LEAF M139  
Dam: Rosevale Aurora H175 (P)      Dam: BTD Santa Cow

Broad Leaf M139 is PTIC.

200D	400D	600D	Mat. Wt.	SS	Car. Wt	EMA	Rib Fat	P8 Fat	IMF
+18	+25	+42	+51	+1.7	+18	+3.2	-0.3	-0.4	-0.5
54%	57%	62%	53%	65%	48%	44%	52%	51%	53%

\$ Index Value

Term	Breed	Fert +
+\$49	+\$46	+\$30

PURCHASER: \_\_\_\_\_ \$ \_\_\_\_\_





Lot 66

BROAD LEAF VAN DER VALK V82

DOB: 26-11-2023

AGE: 21 MONTHS

S BULL

Sire: Strathmore Nullarbor N644 (PP)

Sire: Classified Santa Bull

Sire: BROAD LEAF NULLABOR R91 (P)

Dam: BROAD LEAF R164 (P)

Dam: Broad Leaf M144

Dam: BTD Santa Cow

Broad Leaf R164 (P) has recorded 2 calves in the last 2 years and is PTIC.

200D	400D	600D	Mat. Wt.	SS	Car. Wt	EMA	Rib Fat	P8 Fat	IMF
+11	+16	+20	+31	-0.6	+11	+3.5	+1.0	+1.8	+0.4
52%	55%	61%	50%	64%	45%	40%	49%	49%	51%

\$ Index Value

Term	Breed	Fert +
+\$42	+\$42	+\$13

PURCHASER: \_\_\_\_\_

\$ \_\_\_\_\_

SANTA GERTRUDIS GROUP BREEDPLAN EBVs (JULY 2025)													
LOT	200D	400D	600D	Mat. Wt	SS	Car. Wt	EMA	Rib Fat	P8 Fat	IMF	Term \$	Breed \$	Fert + \$
1	+11	+22	+30	+33	+2.7	+11	+3.5	+0.4	+0.9	+0.9	+\$59	+\$68	+\$64
2	+16	+29	+36	+32	+2.0	+16	+4.9	+0.6	+0.8	-0.1	+\$56	+\$54	+\$25
3	+20	+35	+43	+60	+0.4	+21	+5.3	+0.9	+1.6	+0.3	+\$72	+\$73	+\$31
4	+20	+35	+42	+50	+0.4	+23	+7.1	+1.0	+1.6	+0.4	+\$80	+\$86	+\$41
5	+15	+22	+32	+39	+2.2	+14	+1.1	+0.3	+0.4	0.0	+\$49	+\$71	+\$83
6	+20	+27	+38	+40	+0.9	+16	+4.5	+0.9	+1.4	+0.1	+\$56	+\$59	+\$22
7	+18	+30	+39	+45	+0.1	+19	+5.1	+0.6	+1.3	0.0	+\$64	+\$71	+\$34
8	+16	+27	+36	+51	+0.6	+21	+5.4	-0.2	-0.1	-0.1	+\$60	+\$65	+\$28
9	+20	+31	+45	+71	+1.2	+23	+1.4	+0.2	+0.4	+0.2	+\$66	+\$87	+\$96
10	+25	+36	+52	+64	+1.9	+25	+5.9	+1.0	+1.5	-0.1	+\$75	+\$74	+\$26
11	+24	+32	+40	+53	+0.2	+23	+6.8	+0.5	+1.1	0.0	+\$65	+\$49	-\$12
12	+13	+21	+31	+42	+1.9	+14	+4.0	+0.2	+0.7	+0.1	+\$51	+\$54	+\$23
13	+15	+22	+27	+32	+0.3	+18	+4.5	-0.5	-0.2	-0.5	+\$40	+\$36	+\$3
14	+19	+28	+38	+48	+0.4	+21	+5.8	-0.2	+0.2	-0.2	+\$63	+\$64	+\$27
15	+8	+12	+17	+25	-0.2	+6	-	+0.4	+1.2	0.0	+\$27	+\$15	-\$11
16	+7	+11	+14	+22	-1.1	+11	+4.5	-0.3	+0.4	-0.4	+\$28	+\$21	-\$15
17	+16	+25	+31	+50	+0.6	+13	+2.0	+2.1	+2.7	+0.5	+\$54	+\$76	+\$84
18	+10	+12	+17	+24	+1.0	+9	+2.5	+0.8	+1.0	+0.2	+\$31	+\$31	+\$18

SANTA GERTRUDIS GROUP BREEDPLAN EBVs (JULY 2025)													
LOT	200D	400D	600D	Mat. Wt	SS	Car. Wt	EMA	Rib Fat	P8 Fat	IMF	Term \$	Breed \$	Fert + \$
19	+18	+28	+34	+51	+1.5	+18	+3.9	+0.9	+1.3	+0.2	+\$57	+\$58	+\$30
20	+14	+20	+28	+42	+0.3	+15	+3.5	+0.8	+1.5	+0.2	+\$48	+\$46	+\$13
21	+7	+17	+19	+27	+2.1	+6	+3.0	+1.1	+1.1	+0.7	+\$45	+\$50	+\$38
22	+6	+8	+1	+3	-0.4	+9	+2.7	+0.1	+0.8	0.0	+\$25	+\$18	-\$5
23	+2	+11	+12	+8	+0.3	0	+3.0	+2.1	+3.3	+1.0	+\$42	+\$59	+\$53
24	+10	+19	+19	+37	+2.4	+10	+2.0	+0.9	+0.9	+0.2	+\$39	+\$49	+\$46
25	+11	+16	+27	+34	+2.7	+12	+3.4	+1.0	+0.7	0.0	+\$46	+\$66	+\$64
26	+23	+35	+58	+88	+1.7	+31	+6.1	+0.7	+0.6	-0.3	+\$90	+\$126	+\$108
27	+12	+14	+25	+31	+0.3	+6	+0.6	+1.7	+2.1	+0.4	+\$35	+\$42	+\$42
28	+17	+23	+34	+27	+1.4	+17	+4.5	+0.2	+0.5	-0.5	+\$45	+\$39	+\$3
29	+10	+15	+19	+30	+1.2	-	-	-	-	-	+\$42	+\$55	+\$30
30	+14	+19	+23	+35	-0.3	+13	+3.0	+0.6	+1.1	+0.4	+\$40	+\$40	+\$20
31	+8	+16	+18	+20	+0.4	+7	+4.1	+1.1	+2.1	+0.7	+\$46	+\$50	+\$25
32	+20	+30	+43	+64	+0.6	+21	-	+0.1	+0.8	-0.3	+\$66	+\$67	+\$22
33	+13	+24	+37	+56	+1.2	+17	+3.4	+0.6	+0.3	-0.1	+\$57	+\$66	+\$56
34	+1	+2	-1	+12	+1.7	+8	+4.1	-0.3	-0.5	-0.2	+\$19	+\$24	+\$3
35	+21	+28	+39	+45	+0.1	+18	+4.8	+1.7	+2.6	+0.6	+\$65	+\$59	+\$22
36	+13	+23	+30	+41	+1.1	+18	+4.7	-1.6	-1.9	-0.6	+\$42	+\$30	-\$20

SANTA GERTRUDIS GROUP BREEDPLAN EBVs (JULY 2025)													
LOT	200D	400D	600D	Mat. Wt	SS	Car. Wt	EMA	Rib Fat	P8 Fat	IMF	Term \$	Breed \$	Fert + \$
37	+23	+38	+54	+84	+0.2	+29	+4.8	-0.7	-0.6	-0.5	+\$72	+\$75	+\$43
38	+16	+27	+36	+57	+1.5	+22	+5.3	-1.2	-1.7	-0.4	+\$60	+\$58	+\$18
39	+16	+24	+35	+46	+0.6	+15	+4.8	+1.1	+1.8	+0.5	+\$61	+\$62	+\$27
40	+14	+26	+34	+32	+1.5	+11	+5.2	+1.7	+2.3	+0.5	+\$62	+\$70	+\$47
41	+7	+11	+16	+27	-0.7	+9	-	+0.1	+0.4	+0.3	+\$32	+\$34	+\$24
42	+15	+22	+29	+38	+0.1	+21	-	-0.3	+0.5	+0.2	+\$44	+\$35	+\$7
43	+15	+26	+31	+36	+0.5	+13	+3.2	+0.3	+0.4	+0.2	+\$48	+\$50	+\$30
44	+1	+5	+3	+6	0.0	+5	+3.3	+0.3	+0.9	+0.3	+\$24	+\$31	+\$25
45	+13	+28	+38	+55	+2.6	+15	+2.4	+0.7	+0.8	+0.6	+\$65	+\$75	+\$66
46	+18	+30	+44	+46	+1.9	+17	+5.2	+0.9	+1.4	+0.4	+\$69	+\$73	+\$50
47	+15	+21	+29	+27	+0.4	+16	+4.4	-0.1	+0.2	-0.3	+\$43	+\$52	+\$32
48	+7	+7	+13	+22	-0.4	+5	+2.4	+1.4	+1.9	+0.6	+\$32	+\$38	+\$37
49	+6	+8	+12	+7	+0.4	+7	+2.4	+0.1	+0.4	+0.1	+\$29	+\$47	+\$50
50	+8	+15	+13	+26	+1.9	+14	+4.0	-0.4	-0.9	-0.3	+\$35	+\$45	+\$22
51	+4	+12	+15	+14	+1.9	+2	-	+1.5	+2.1	+0.5	+\$35	+\$36	+\$16
52	+10	+14	+22	+25	+1.4	+6	+3.5	+0.7	+1.1	+0.1	+\$34	+\$29	+\$3
53	+7	+10	+15	+20	+0.4	+8	+3.1	-0.1	+0.4	-0.2	+\$26	+\$20	-\$4
54	+14	+23	+32	+22	0.0	+8	+4.1	+1.5	+2.1	+0.4	+\$52	+\$55	+\$27



SANTA GERTRUDIS GROUP BREEDPLAN EBVs (JULY 2025)													
LOT	200D	400D	600D	Mat. Wt	SS	Car. Wt	EMA	Rib Fat	P8 Fat	IMF	Term \$	Breed \$	Fert + \$
55	+6	+15	+18	+18	+1.3	+14	+5.7	+0.2	+0.1	-0.5	+\$43	+\$59	+\$24
56	+9	+17	+20	+28	+1.4	+11	+3.4	+0.7	+1.0	+0.3	+\$43	+\$50	+\$33
57	+11	+13	+19	+15	+1.1	+11	+4.7	+0.6	+1.1	0.0	+\$36	+\$37	+\$3
58	+9	+19	+29	+29	+1.9	+10	+3.3	+1.2	+1.5	+0.1	+\$49	+\$71	+\$73
59	+6	+11	+15	+14	+1.4	+5	+2.8	+1.0	+1.5	+0.3	+\$34	+\$49	+\$55
60	+11	+16	+24	+27	+0.8	+11	+4.3	+0.3	+0.8	-0.1	+\$38	+\$39	+\$9
61	+12	+20	+27	+42	+1.5	+11	+1.4	+0.6	+1.4	+0.3	+\$38	+\$35	+\$21
62	+11	+20	+35	+51	+1.8	+12	+1.8	+0.9	+1.1	0.0	+\$53	+\$82	+\$84
63	+6	+11	+13	+14	-0.9	+5	+2.2	+0.9	+1.3	+0.2	+\$26	+\$31	+\$24
64	+7	+17	+15	+30	-0.4	+7	+3.0	+2.2	+3.3	+1.2	+\$52	+\$61	+\$49
65	+18	+25	+42	+51	+1.7	+18	+3.2	-0.3	-0.4	-0.5	+\$49	+\$46	+\$30
66	+11	+16	+20	+31	-0.6	+11	+3.5	+1.0	+1.8	+0.4	+\$42	+\$42	+\$13

## Notes

This image shows a single sheet of white paper with horizontal ruling lines. The lines are evenly spaced and run across the width of the page. There are no margins, text, or other markings on the paper.

# Results

Sold: \_\_\_\_\_

Offered: \_\_\_\_\_

Clearance: \_\_\_\_\_

Gross: \_\_\_\_\_

Average: \_\_\_\_\_

Top Price: \_\_\_\_\_

# Terms & Conditions



# LIVESTOCK AUCTION TERMS AND CONDITIONS OF SALE

## CHAPTER ONE – PRELIMINARY

1. (a) A vendor is bound by these terms and conditions by offering livestock for sale by auction.
- (b) An agent (which includes an auctioneer) is bound by these terms and conditions by conducting an auction sale.
- (c) A buyer is bound by these terms and conditions by bidding at auction.
- (d) **Competition and Consumer Act (Cth) 2010**  
It is unlawful for parties that are, or otherwise would be, in competition with each other to make, or give effect to, a contract, arrangement or understanding that contains a provision relating to:
  - i. price-fixing; or
  - ii. restricting outputs in the production and supply chain; or
  - iii. allocating customers, suppliers or territories; or
  - iv. bid-rigging; or
  - v. collusive bidding.
 Large fines and other sanctions may be imposed for unlawful conduct.
2. (a) In these terms the expression auctioneer, agent, buyer and vendor respectively includes the servants, contractors and agents of each of them. The auctioneer, agent, buyer and vendor shall be wholly responsible for the acts and omissions of their respective servants, contractors and agents. The term "auctioneer" includes, so far as the law and context permits, the vendor's agent.
- (b) When used in these terms the expressions "companion animals" means all animals originating from the same property on a particular day. Where lots are split and sent to multiple establishments, then all of these animals shall be regarded as companions.
3. The following applies in interpreting these terms and conditions:
  - (a) The following words have the following meanings:
    - Fees means all levies, charges, fees, costs and other expenses incurred or relating to these terms and conditions and the sale and purchase of livestock including, without limitation, transaction levies, yard and weigh dues, cartage, advertising and rebates, and whether paid for, or incurred, by the agent;
    - Livestock means animals auctioned pursuant to these terms and conditions; and
    - Price means the amount at which the lot has been sold to the buyer referred to in clause 7 of these terms and conditions
      - (i) plus any Fees and other expenses incurred in relation to the purchase of livestock that are payable by the buyer; and
      - (ii) plus any GST added in accordance with clause 12.
  - (b) These terms and conditions are subject to legislation or regulation in the State in which the auction is conducted and in the event of any conflict then the legislation or regulation will prevail. The provisions of these terms and conditions are in addition to, and do not derogate from, the duties and rights of vendors, agents and buyers set out in legislation and regulation in the State in which the auction is conducted.

## CHAPTER TWO – STANDARD TERMS OF SALE

4. Subject to any reserve price, and to the right, prior to the fall of the hammer, of the vendor to withdraw any lot without declaring the reserve, the highest bidder shall be the buyer.
5. The auctioneer has the right to bid on behalf of the vendor provided that it is notified prior to the commencement of the sale and is subject to State law.
6. A bid cannot be made or accepted after the fall of the hammer unless, in accordance with clause 8, the auctioneer decides to put the lot up again.
7. Prior to the fall of the hammer the auctioneer shall announce the last bid and receive any further bids. The last price called by the auctioneer at the fall of the hammer shall be the amount at which the lot has been sold.
8. In the event of a disputed bid, the auctioneer is the sole arbitrator of the successful bidder or the auctioneer may decide to put the lot up again. The auctioneer's decision is final.
9. The auctioneer may refuse to accept any bid which, in the auctioneer's opinion, is not in the best interest of the vendor and need not give reasons for doing so.
10. A bidder shall be deemed to be a principal unless, prior to bidding, the bidder has given to the auctioneer a copy of written authority to bid for or on behalf of another person.
11. The successful bidder at a livestock auction sale must give to the auctioneer at the fall of the hammer:
  - (a) the purchaser's name; or

- (b) the bid card number which identifies the purchaser; or
- (c) the name of the person on whose behalf the successful bid was made; and
- (d) the Property Identification Code (known as the "PIC") of destination.
12. The auction shall be conducted on the basis that the bid price shall be exclusive of Goods and Services Tax (GST). GST shall be added after the fall of the hammer for those sales subject to GST.
13. The vendor warrants:
  - (a) That the vendor has (or will have) the right to sell the livestock at the time of delivery; and
  - (b) That the purchaser will obtain title on completion of the purchaser's obligations under this contract including payment.
14. If a buyer does not comply with any of these terms and conditions, which includes the requirements of State law, any livestock knocked down to that buyer may be re-sold by public auction or private contract in whatever lots and manner the auctioneer decides. The re-sale may be with or without notice and shall be at the buyer's risk. The buyer is responsible for all loss and expense arising out of a re-sale and is not entitled to any resulting profit.
15. The buyer of livestock must pay the agent the full amount of the purchase price in immediate funds on receipt of a tax invoice. Payment is required prior to delivery unless some other time for payment is specified in an agreement between the buyer and the auctioneer that was made before the fall of the hammer. If, before delivery, payment has not been made then clauses 20 to 23 apply.
16. No person may bid unless, prior to the commencement of the sale, that person has made arrangements satisfactory to the auctioneer for payment for livestock purchased. If bids in breach of this condition are inadvertently accepted, delivery shall not be given until the purchase money is paid and any law, rule or practice to the contrary is accordingly negated as far as possible.
17. (a) Cattle sold on a liveweight basis that are weighed pre-sale are at the risk and expense of the buyer upon the fall of the hammer.
- (b) Cattle sold on a liveweight basis that are weighed post-sale are at the risk and expense of the buyer immediately after weighing.
- (c) All livestock other than cattle sold on a liveweight basis are at the risk and expense of the buyer upon the fall of the hammer.
18. (a) Subject to this clause the sale is complete on the fall of the hammer.
- (b) The time for rejection is the time commencing at the fall of the hammer and ending at the first of:
  - (i) delivery is taken by a representative of the buyer;
  - (ii) departure of the animal from the purchaser's delivery pen; or
  - (iii) one hour after the last animal is:
    - a. in the case of pre-sale weighing, sold; or
    - b. in the case of post-sale weighing, weighed.
- (c) During the time for rejection the buyer may reject any animal which is lame, blind or diseased where that condition existed prior to the fall of the hammer but could not be reasonably observed when the animal was in the selling pen.
- (d) If the purchaser rejects an animal during the time for rejection then the sale of that animal is cancelled and the animal is returned to the vendor or sold on such terms as any buyer and the agent may agree, after the agent has disclosed the reason for rejection to that buyer.
- (e) This subclause applies only to cattle which are sold in Queensland at auction for slaughter. The agent has responsibility for the prevention of loss or escape (but not death, sickness or injury) of those cattle from the time of the fall of the hammer, for delivery to and from the delivery pen to the buyer's delivery pen and onto the buyer's nominated transport. This responsibility ends at the earlier of those cattle boarding the buyer's nominated transport or sunset on the day after the sale. This subclause does not apply if the agent makes an announcement to that effect prior to sale.
19. (a) Subject to the right of rejection in Clause 18, all conditions and warranties expressed or implied by law are hereby excluded from the sale to the extent that the law allows. All lots are open for inspection prior to the commencement of the sale and are sold with all faults, if any. No compensation shall be given for any defects, imperfections, errors of description, number in or of any lots sold or otherwise.
- (b) Any claim or objection arising out of an error or misdescription in the provision of relevant information in terms of legislation or regulation concerning the National Livestock Identification Scheme (NLIS) must be made by 5:00pm on the seventh day after the fall of the hammer. No objection, requisition or claim against the

- vendor or agent in respect of such error or misdescription can be made after that time.
- (c) Any statements made by the vendor or the auctioneer whether in writing or orally to the effect that any female has been pregnancy tested or scanned positive shall mean and require only that a certificate in writing shall be supplied to the buyer signed by a qualified veterinary surgeon or certified scanner certifying that the said female has been tested or scanned on the date specified in the certificate and that in the opinion of the surgeon or scanner was pregnant on that date.
- (d) For slaughter cattle, the agent undertakes to make every reasonable effort to ensure that any NLIS cattle device number is transferred from the saleyard PIC to the purchaser's PIC on the NLIS database no later than midnight on the day of the sale.
- (e) For other slaughter livestock the agent undertakes to make every reasonable effort to ensure that the NLIS information is transferred from the saleyard PIC to the purchaser's PIC on the NLIS database no later than midnight on the day of the sale.
- (f) Where livestock have a food safety or market eligibility status derived from the National Vendor Declaration (NVD) and/or the NLIS/ERP database, the agent will inform the buyers by presale catalogue and/or announce the status prior to the offering of those lots.
20. If delivery is made to, or possession obtained by, the buyer or its representative before full payment of the Price, then until full payment is received, the buyer:
  - (a) does not acquire title to the livestock;
  - (b) holds the livestock as bailee only for the vendor;
  - (c) must act in a fiduciary capacity in its relationship with the vendor;
  - (d) must store the stock separately or so that they are readily distinguishable from other livestock owned by the buyer;
  - (e) is responsible for the safety and well being of the livestock;
  - (f) may make a bona fide sale for market value of any or all of the livestock. As between the buyer and the subsequent buyer, the sale shall be made by the buyer in its own name and not as agent for the vendor, however as between the vendor and buyer, the sale shall be made as bailee and agent for the vendor; and
  - (g) must keep and account for the proceeds of any subsequent sale separately from its other money and hold those proceeds, together with the benefits of any rights against subsequent buyers, on trust for the vendor.
21. The purchaser agrees that:
  - (a) Clause 20 creates a registrable security interest under the Personal Property Securities Act (Cth) 2009 (PPSA);
  - (b) The Purchaser acknowledges the rights of the Seller (and/or the Agent if Clause 25 applies) to register a financing statement under the PPSA with respect to the security interest created by this clause;
  - (c) The Livestock are collateral for the purposes of the PPSA;
  - (d) to the extent permitted, the Purchaser waives any right the Purchaser has under the PPSA to receive notices; and
  - (e) the date upon which the security interest created by this clause comes into force is the first date on which livestock are delivered pursuant to this contract
22. The buyer may not make any claim against the vendor for actions by the vendor or its agent under clauses 20 or 21 and indemnifies the vendor and its agent against any loss, damage, costs, expenses, penalties, fines or claims suffered by the vendor, the agent or any person or entity arising from the vendor exercising its rights under clauses 20 or 21.
- 23.1 Clause 23 applies whenever the agent pays the vendor before being paid by the buyer, which the agent is not bound to do. The agent is then the del credere agent of the vendor at law.
- 23.2 The vendor hereby gives notice to the buyer of the assignments referred to in clause 23.3.
- 23.3. When this clause applies, in addition to any rights of the agent that arise by operation of the law, the parties agree that, subject to clause 23.5 the agent is subrogated to all rights of the vendor under these terms and conditions against the buyer.
- 23.4. The vendor acknowledges that the agent may take enforcement, repossession or other action to recover any livestock for which the buyer has not paid in full, or the Price of such livestock, owing by the buyer under these terms and conditions:
  - (a) when this clause does not apply, as agent of the vendor (including by reselling the livestock); and
  - (b) when this clause applies, on the agent's own behalf exercising the rights of the vendor by subrogation or assignment under these terms and conditions (whether in the vendor's name

or not) and, where title to the livestock has not passed to the agent, by selling the livestock as agent of the vendor without the agent having to account to the vendor for the proceeds of sale.

23.5. The agent may at any time, assign, transfer, securitise or otherwise dispose of all or any of its rights under these terms and conditions and any debts created pursuant to it (including, without limitation, the rights assigned to it under clause 23.3).

23.6. The vendor hereby irrevocably appoints the agent as the vendor's attorney to:

- (a) do at any time and in any manner as the agent thinks fit all acts necessary or desirable to perfect or improve the rights and interests afforded, or intended to be afforded, to the agent under these terms and conditions; and
- (b) appoint one or more sub-attorneys to do anything that the agent may do as the vendor's attorney.

23.7. These terms and conditions do not render the agent liable to the buyer as vendor nor entitle the buyer to set off against the agent any right the buyer may have against the vendor or otherwise.

23.8. The buyer acknowledges that the provisions of this clause 23 are intended solely for the benefit of the agent (and its assigns) and the vendor. The liabilities and obligations of the buyer will not be in any way affected:

- (a) by this clause 23, other than as it expressly provides; or
- (b) by the failure of the agent or the vendor or either of them to comply with the terms of this clause 23.

23.9. The buyer must pay all amounts payable to the vendor or the agent under these terms and conditions without any deduction, withholding, set off or counterclaim whatsoever, whether the benefit of a deduction, withholding, set off or counterclaim is alleged to exist in favour of the buyer as against the vendor or the agent in any capacity whatsoever or any other person including any assignor of the vendor's or the buyer's interests under these terms and conditions.

24. (a) The agent agrees that he is liable to pay to the vendor the Price, less such commission as is agreed between the vendor and the agent, and in the absence of any agreement such amount as is reasonable, and less the Fees that are payable by the vendor that were incurred by the agent on behalf of the vendor in relation to the sale of the livestock.

(b) In the event that the buyer pays the Price or part of it direct to the vendor then the agent has no liability to the vendor for the amount of such payment. Further, if the agent pays the vendor any amount which the buyer also pays direct to the vendor in respect of the same livestock, then the vendor must repay the agent that amount and the agent may debit that amount to an account held in the name of the vendor by the agent.

(c) Regardless of whether or not a sale has occurred the agent may, but is not under obligation to do, instead of deducting payments owed to it by the vendor, debit the amount of the commission and fees to an account held in the name of the vendor by the agent.

25. (a) The auctioneer has been retained by the vendor as auctioneer for the purpose of selling the livestock comprised in the lots. The terms of engagement between the auctioneer and the vendor do not extend to the provision of advice by the auctioneer to the vendor in relation to the safety or otherwise of the sale ring, the saleyards and the surrounding environments.

(b) The vendor, the agent and the buyer agree to comply with their several duties under the Australian Animal Welfare Standards and Guidelines for the Land Transport of Livestock and further to consign, manage, receive, transport and handle livestock in accordance with any other or additional requirements of animal welfare legislation specific to the jurisdiction in which livestock are consigned, managed, received, transported and handled in the course of the auction process.

#### **CHAPTER THREE – VENDOR WARRANTY FOR CORRECT PRESENTATION AND DECLARATION**

26. This chapter applies only in the case of livestock and their companion animals sold at auction for slaughter when the buyer is the slaughterer and the livestock are transported direct from

the sale yard to the meatworks at which they are slaughtered. This chapter does not apply if the buyer is a trader who subsequently resells the livestock to a slaughterer. A slaughterer is any person who pays the AMPC Processor levy.

27. The warranty of a vendor is that livestock and their companion animals offered for sale at auction:

- (a) pass government and other regulatory authority requirements and inspections at the time of slaughter;
- (b) are of merchantable quality;
- (c) carry an NLIS device in accordance with State law;
- (d) in the case where a representation has been made in the pre-sale catalogue that the livestock have particular characteristics or are fit for a particular purpose or market, and such representations are based on information in any document, the livestock will have those characteristics or will be fit for the particular purpose or market; and
- (e) all information in any document provided by the vendor is true, complete and correct in all material respects.

28. In the event of a breach by the vendor of the vendor's warranty and provided such breach is notified by the buyer to the agent by 5:00pm on the 7th day after the fall of the hammer then the buyer is not liable to pay the portion of the Price of such of the vendor's livestock to which the breach applies.

29. However if the breach by the vendor is such that the livestock are not rejected outright but are instead downgraded then the buyer will pay the value of the livestock at their next highest and best use.

30. In the case of a breach by the vendor of the vendor's warranty then the vendor will also be liable to the buyer for any further losses which the buyer might establish but the buyer will take all reasonable steps in co-operation with the agent and vendor to mitigate both the effect of the breach and the amount of any loss.

31. Where a sentinel animal of a lot tests positive for chemical residue, or foreign material contamination and provided such test is certified and notified as required by these vendor warranty terms, then:

- (a) the buyer will be entitled to delay payment for the price of all livestock in that lot only; or
- (b) the vendor has the option, at the vendor's cost, of collecting the companion animals, if allowed by law; or of having the livestock slaughtered in which event the risk of further condemnations will be that of the vendor. Where product integrity is potentially jeopardised, the Processor has the right to refuse slaughter and send the livestock back to the consigning property at the vendor's cost.

32. The auctioneer is liable to the buyer in respect of any breach of the vendor's warranty arising out of:

- (a) any error, by the auctioneer, of transcription of information from the NVD completed by the vendor to the pre-sale catalogue or the buyers post-sale summary;
- (b) any failure by the auctioneer to notify the buyer, prior to bidding, of any breach by the vendor of the warranty of the vendor if the buyer establishes that the agent knew of such breach prior to the sale; and
- (c) any failure by the auctioneer to announce prior to bidding, or disclose in the pre-sale catalogue, that the vendor has failed to provide a NVD that is complete in all material aspects.

#### **CHAPTER FOUR – OWNERS RISK FOR CONDITION OF CATTLE**

33. This chapter applies only in the case of cattle and their companion animals sold at auction for slaughter when the buyer is the slaughterer and the cattle are transported direct from the sale yard to the meatworks at which they are slaughtered. This chapter does not apply if the buyer is a trader who subsequently resells cattle to a slaughterer. A slaughterer is any person who pays the AMPC Processor levy.

34. Owners risk reflects the producer's responsibility to provide slaughter cattle for sale that are fit for human consumption. Cattle are fit for human consumption if they are not condemned as unfit by government. Owners risk applies if the condemnation is due to a condition in the animal which the buyer establishes, by the relevant government certificate, existed prior to the fall of the hammer.

35. A buyer with the benefit of owners risk protection is not liable to pay the Price of that animal to the vendor. The buyer remains nevertheless liable for all costs incurred after the fall of the hammer in transport, slaughter, testing and disposal of the animal.

36. Owners risk protection is available to the buyer

of cattle to which this chapter applies if all of the following are satisfied:

- (a) a certificate is issued by government which states the relevant NLIS RFID tag number and PIC, the date of the certificate, the reason for condemnation and that the reason for condemnation existed prior to the fall of the hammer;
  - (b) the certificate is received by the selling agent either in its original form or by fax or electronic communication in the form of data, text or imaging by 5:00pm on the 7th day after the fall of the hammer; and
  - (c) if the condemnation is due to chemical residue the certificate follows testing in a government approved laboratory which establishes maximum residue limits in excess of the Australian limit.
37. Owners risk does not apply, and the buyer must pay for the cattle, if the reason for condemnation is any of bruising, fever, partial condemnation or emaciation.

#### **CHAPTER FIVE – NOTICES REQUIRED BY LEGISLATION**

##### **NSW Property, Stock and Business Agents Act 2002**

##### **Warnings**

Penalties for collusive practices. It is an offence against the Property, Stock and Business Agents Act 2002 for a person to do any of the following as a result of a collusive practice, or to induce or attempt to induce another person by a collusive practice to do any of the following:

- (i) to abstain from bidding; or
- (ii) to bid to a limited extent only; or
- (iii) to do any other act that might prevent free and open competition.

Severe penalties may be imposed on persons convicted of collusive practices.

The auctioneer has the right to make one bid on behalf of the vendor if the auctioneer clearly and precisely announces that fact prior to the sale.

**Tasmania Legislation.** An auctioneer conducting a public auction must not appear to acknowledge the making of a bid if no bid was made. A person must not participate in collusive practices by way of making or receiving an unlawful promise to abstain from bidding, not to bid except to a limited extent or do any other thing which may prevent free and open competition.

##### **WA Auction Sales Act 1973 s31 NOTICE**

It is an offence to:

- (i) induce or attempt to induce another person to abstain from bidding by means of a promise, expressed or implied, that the other person will have the right to elect to take over as buyer or to toss or draw lots to establish who is to become the owner;
- (ii) abstain or agree to abstain from bidding as a result of such a promise;
- (iii) knowingly enter or permit or cause to be entered in the auctioneer's record any name other than that of the actual successful bidder;
- (iv) enter in the auctioneer's record the name of the buyer other than that of the actual successful bidder; or
- (v) in the case of successful bidder supply wrong information as to the name of the buyer to the auctioneer or to any person, firm or corporation on whose behalf the sale is conducted.

The vendor, or any person on behalf of the vendor, or the auctioneer have the right to make no more than three bids.

**© FEBRUARY 2017 Australian Livestock & Property Agents Association Limited All rights reserved. Unauthorised reproduction in whole or in part is an infringement of copyright.**

*These Livestock Auction Terms & Conditions of Sale are provided to ALPA members as recommended terms and conditions only.*





A NUTRIEN AG SOLUTIONS PARTNER

# STUD SALES

**LIVE AUCTIONS & ONLINE SALES**  
**BULLS, FEMALES & GENETICS**  
**PRIVATE SALES | COMMERCIAL SALES**  
**FEEDLOT SALES**



[gdlrural.com.au](http://gdlrural.com.au)



Mark Duthie 0448 016 950  
Josh Heck 0409 732 676  
Corey Evans 0427 233 999

Tammie Robinson 0499 415 061  
Georgie Connor 0428 347 550  
Simon Kinbacher 0427 735 620

**BIG ENOUGH TO COUNT, *small enough to care***



