

A 3D perspective rendering of a window frame, showing the internal structure and the glass pane. The frame is light gray and the glass is a slightly darker shade of gray.

CA.S.T.IM.2000_{s.r.l.}

Carpenteria Scambiatori Termotecnica Impianti

HIGHLIGHTS

- Company background
- Products
- Market and Customers
- Main Data and Facilities
- Certifications and approvals

CA.S.T.Im. 2000 s.r.l.
**OVER 50 YEARS ALONGSIDE
MAJOR ENGINEERING COMPANIES**



COMPANY BACKGROUND

CA.S.T.IM. 2000 s.r.l.

1972- Company establishment – Metallic carpentry design & manufacturing

2000- CASTIM 2000 incorporating former entity

Starting design & manufacture of Pressure and process equipment for Oil&Gas

2002- CASTIM 2000 fully incorporates FLEXIDER Spring Hangers support Division – New workshop built-up



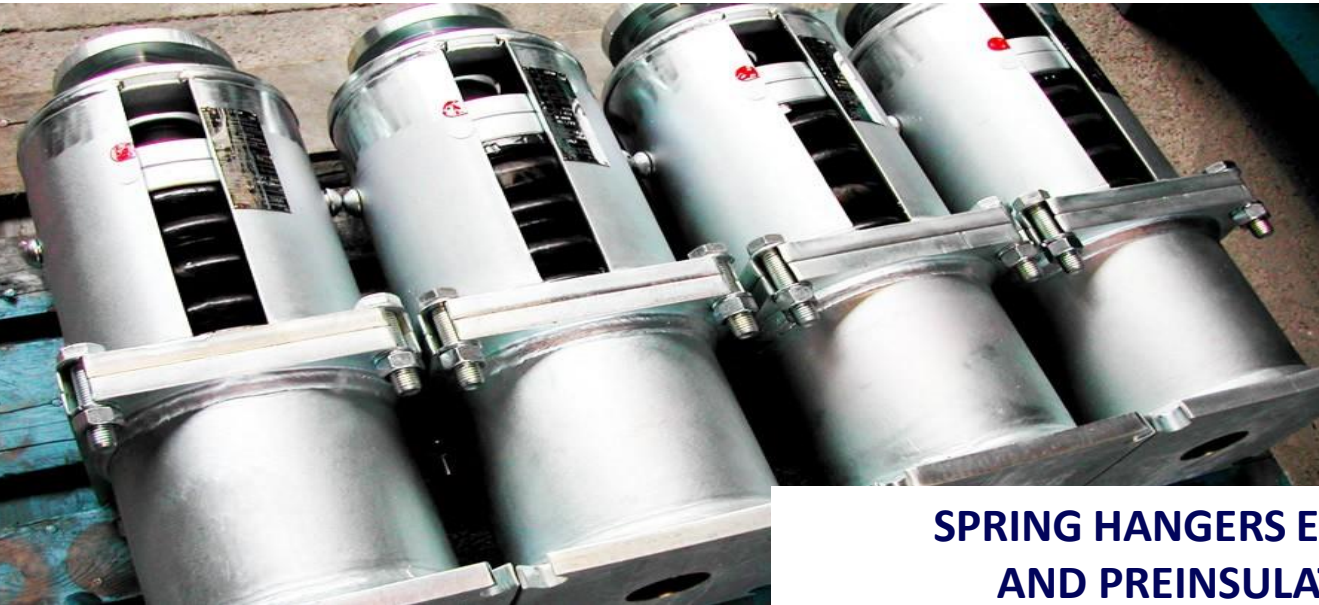


PRODUCTS:

- PIPE SUPPORTS AND ANCILLARIES
- SHELL & TUBES HEAT EXCHANGERS
- ATMOSPHERIC AND PRESSURE VESSELS
- CHEMICAL DOSING SYSTEMS

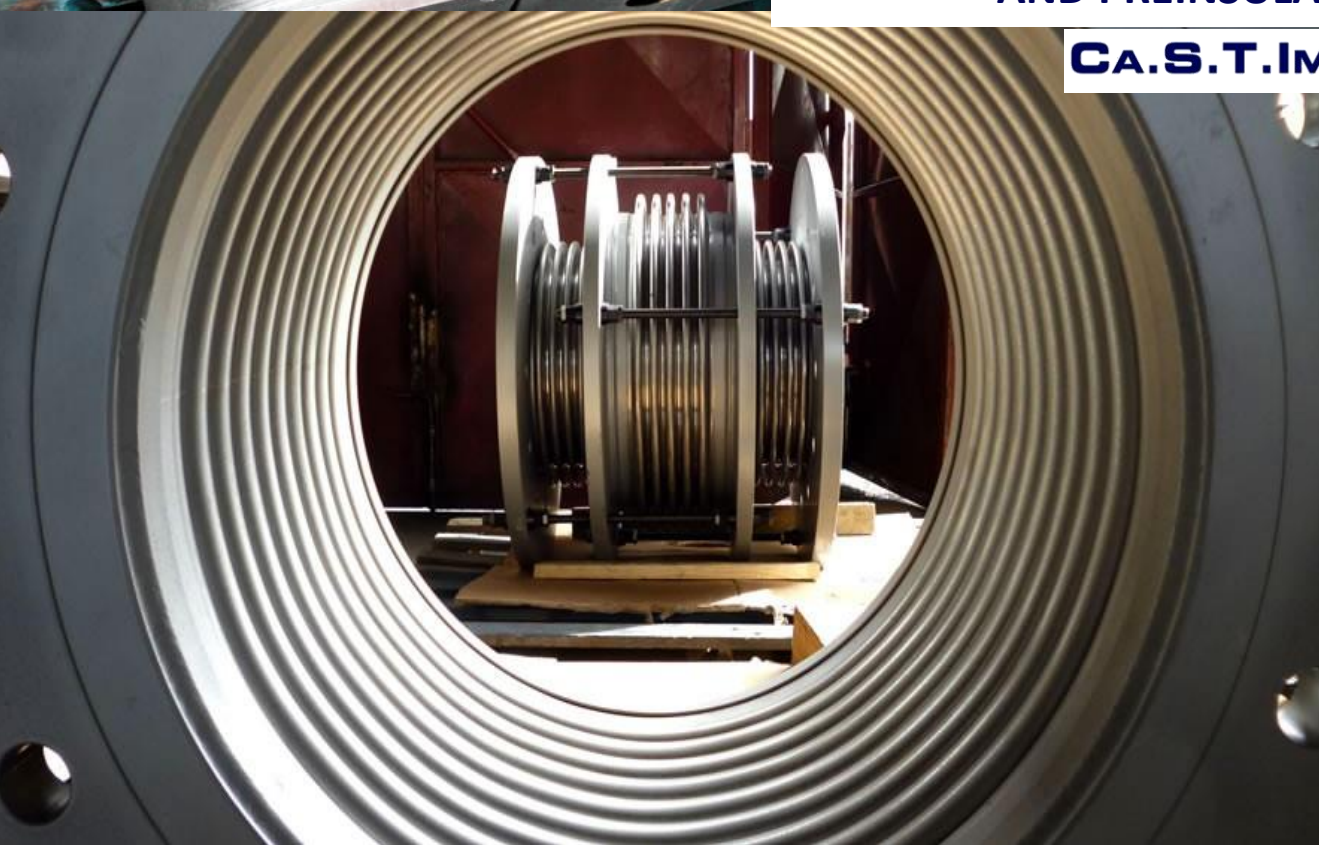
CA.S.T.IM. 2000 s.r.l.





**SPRING HANGERS EXPANSION JOINTS
AND PREINSULATED SUPPORTS**

CA.S.T.IM. 2000 s.r.l.



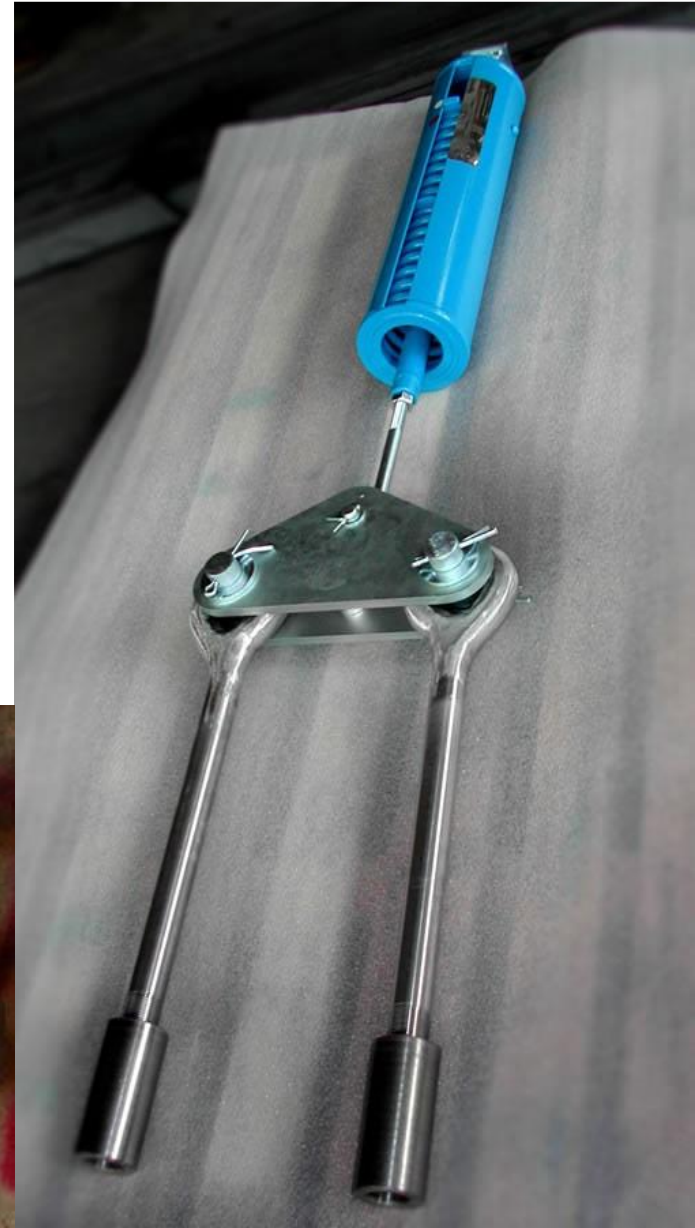
COMPONENTS AND HARDWARE

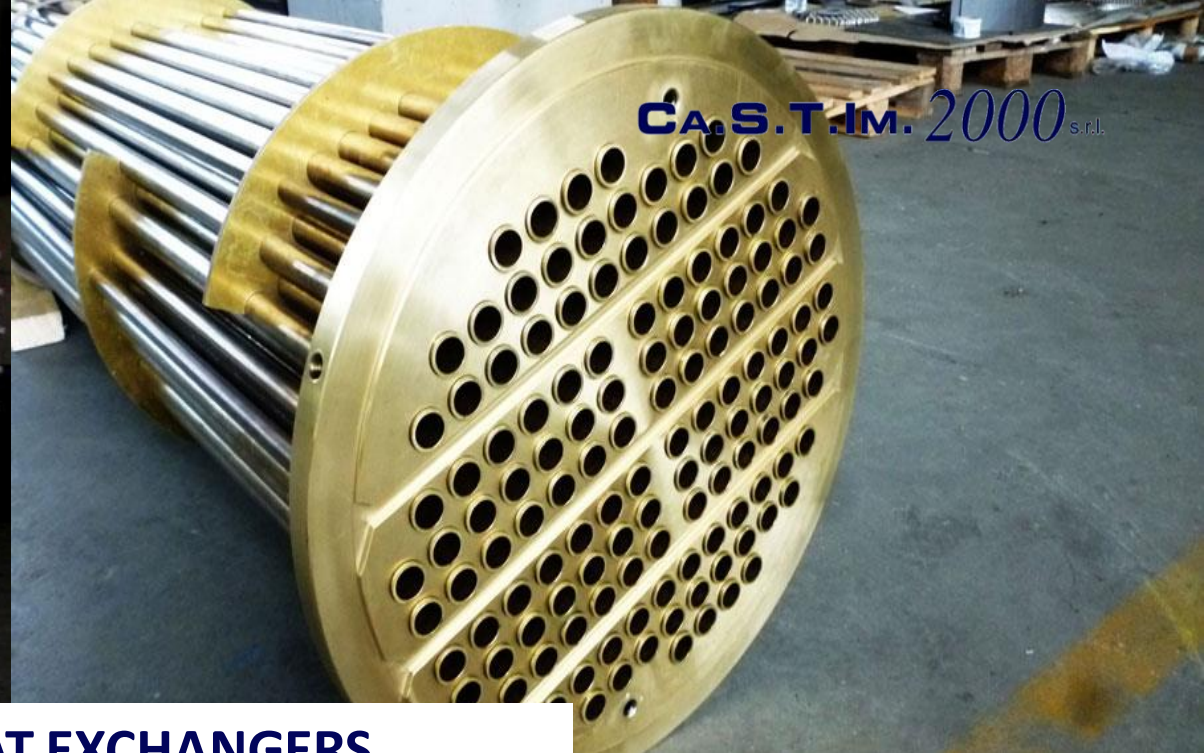
- Pipe Clamps
- Snubbers
- Rigid Struts
- Sliding Plates
- Pipe Roller Supports
- Turnbuckles
- Tie-Rods
- Forged Steel Clevis
- Forged Eye Nuts
- U-Bolts
- Sway Brace
- Dynamic Clamps
- Long travel multi-spring Hanger for furnaces
- Special Installations



CUSTOMIZED SOLUTIONS

- HDG Variable Load Spring support
- Variable Spring Hangers for catalyst tubes
- Variable Load Spring Support with double load setting
- Acoustic Attenuation Pads
- Dynamic Clamps





C.A.S.T.I.M. 2000 s.r.l.

SHELL & TUBES HEAT EXCHANGERS





ATMOSPHERIC & PRESSURE VESSELS



CHEMICAL DOSING SYSTEMS

CHEMICALS:

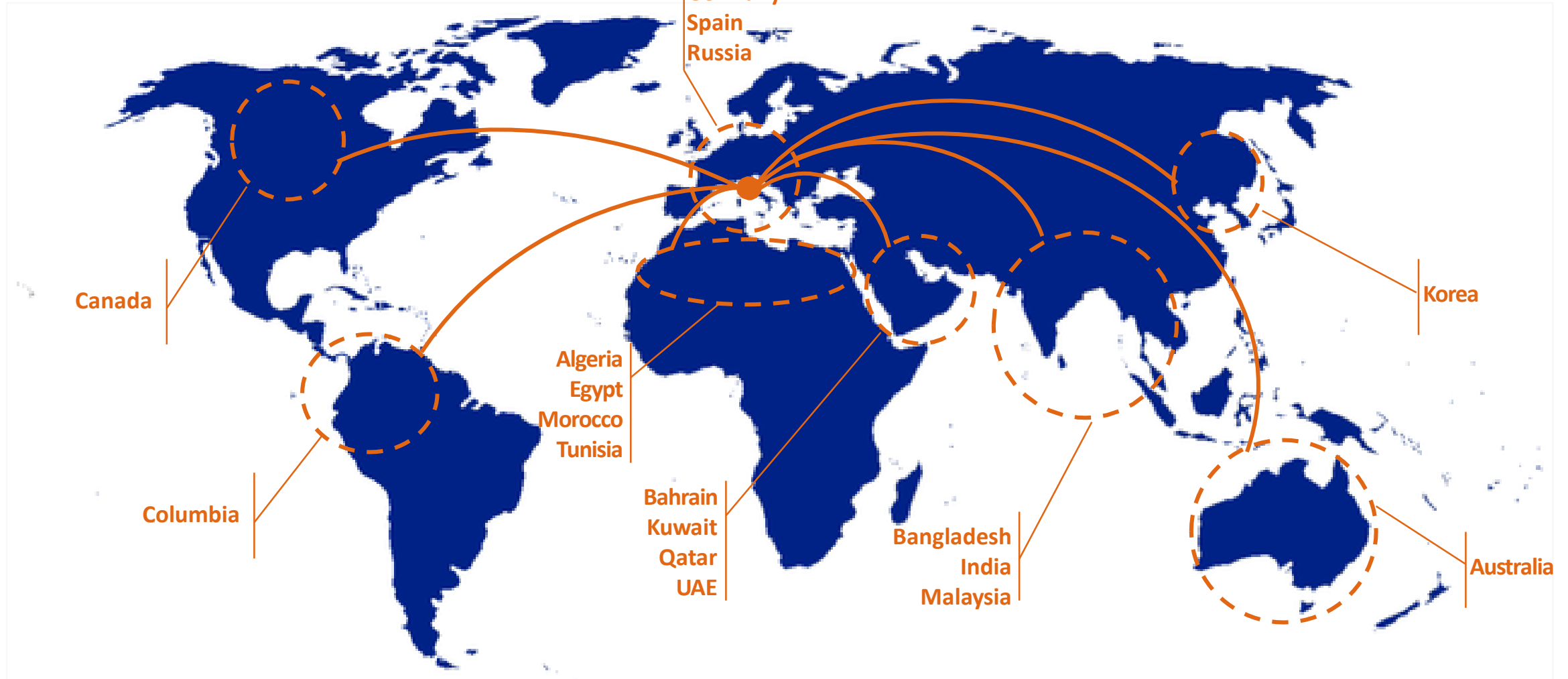
- Ammonia
- Phospates
- Sodium Hydroxyde
- Nitrogen Hydride
- Polyelectrolytes
- Other reagents

APPLICATIONS:

- Process water treatment
- Demineralization
- Combined Cycle Power Plant



CASTIM 2000 SALES NETWORK



Castim 2000 has sales offices and agents around the world.
These offices will be pleased to help with any commercial and technical query.

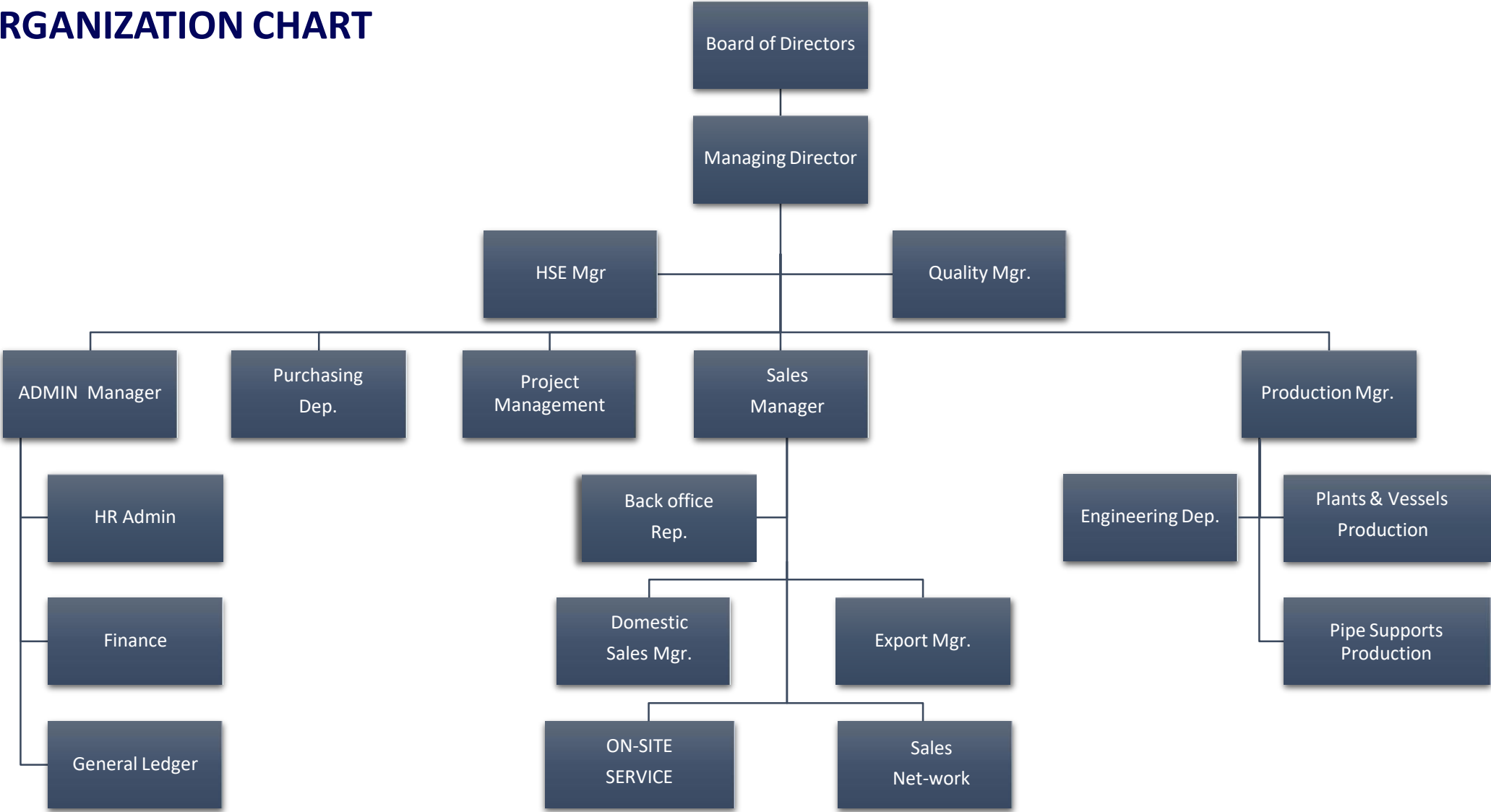
MAIN CUSTOMERS

CA.S.T.IM. 2000 s.r.l.



WE ARE BUILDING A NEW KIND OF COMPANY

ORGANIZATION CHART



COMPANY DATA

LOCATION

Veza d'Alba

Manufacturing area: 5000 Sqm

Total area: 15000 Sqm.

TURNOVER (last 4 years)

2020 € 8.000.000

2019 € 7.000.000

2018 € 8.000.000

2017 € 10.000.000

Corporate figures

50 employees

EQUIPMENT AND FACILITY

Cutting & machining

- Plasma arc cutting
- Electronic expanding equipment
- Plates bending
- "U" type tube bending

Welding

- Automatic SAW
- Semi-automatic MIG/MAG
- TIG

Finishing and handling

- Automatic sandblasting
- Painting
- Overhead travelling and mobile cranes

Others

- Hydraulic press
- Forging Furnaces
- Mill drilling, lathe nails



EQUIPMENT AND FACILITY

Internal test

- Magnetic Particles
- Dye Penetrant
- Thickness test
- Hardness test

External test

- Radiographic tests (X and Gamma Rays)
- Ultrasonic test
- Technological test

Max. allowance

- Thickness 80 mm
- Diameter: 4500 mm.
- Length: 20000 mm.
- Weight: 35 tons

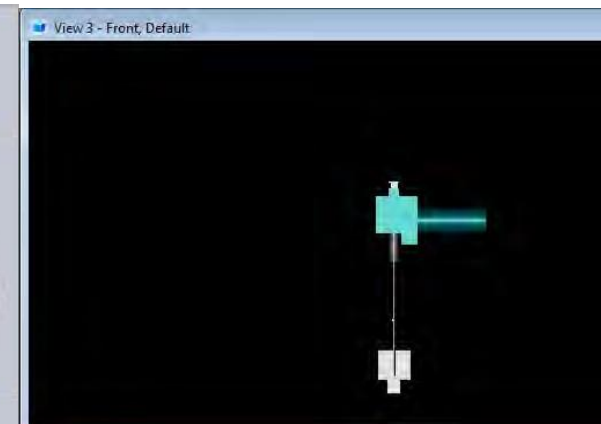
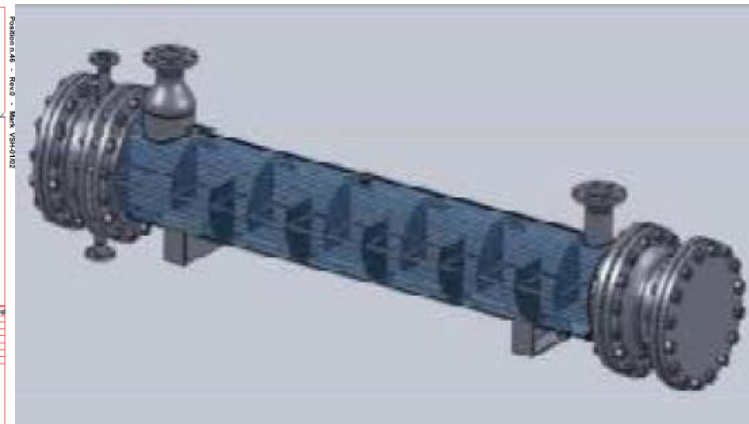
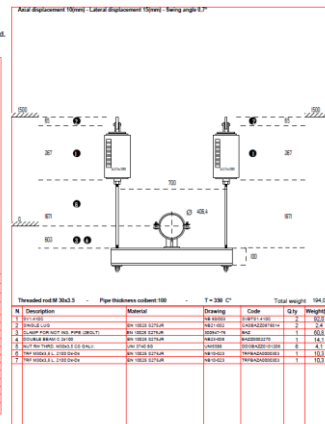
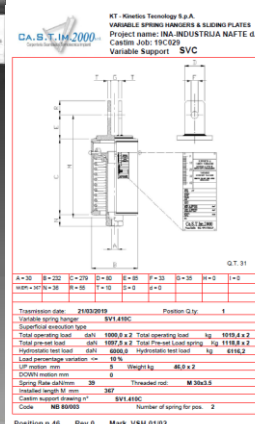
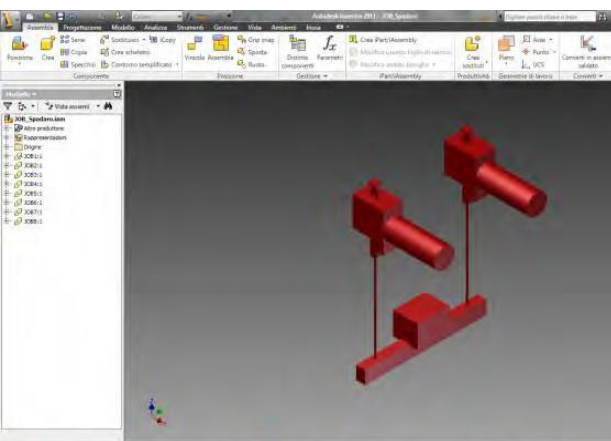
Our engineers are responsible for Technical Support, Pipe Support Design and Product Development. A team of experienced engineers are available to carry out Stress Analysis and Site Inspection Surveys.

2D/3D CAD design - A net of 3 latest release AUTOCAD work stations equipped with MECHANICAL DESKTOP and INVENTOR 3D is used to provide :

- Automated drawings of standard component type supports using local calculations and industrial tables of standards.
- Automated drawings with detailed lists of materials, job instructions and material specifications as applicable.
- Automated drawing revisions to incorporate minor design changes and have a quick response for major design revisions as well.

The majority of the customer normally carry out stress analysis as a part of their engineering work, Ca.S.T.Im 2000 srl can provide Pipe Stress Analysis service, if required, on an ad-hoc basis .

Design Codes : ASME VIII div. 1&2 , TEMA, VSR, WRC, ZICK, EN 13445, HEI.



PROJECT MANAGEMENT AND ASSISTANCE

Main scope and area of expertise

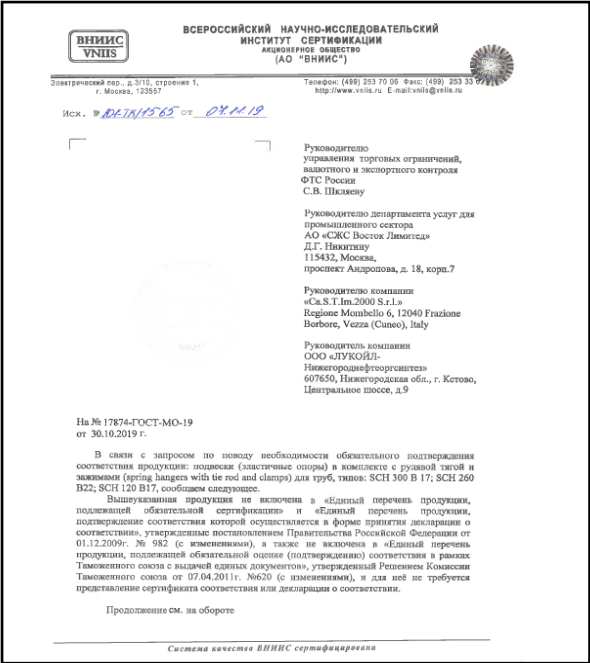
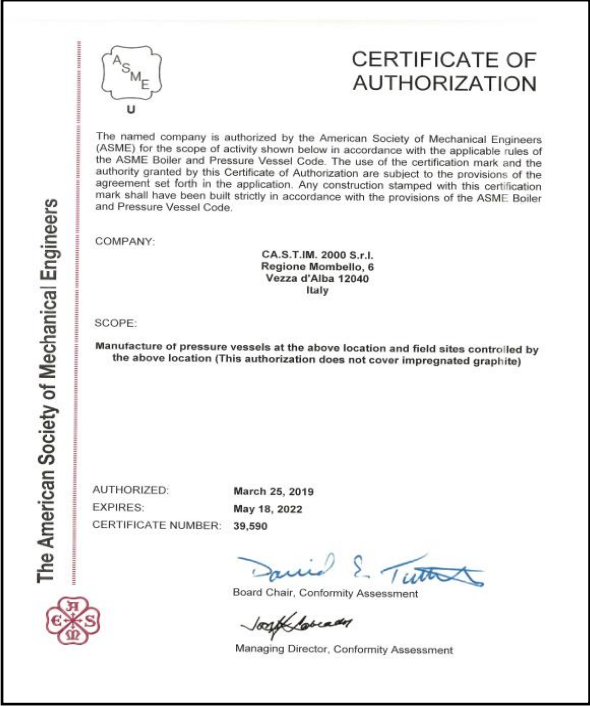
- On-site service
- Regular inspections
- Load resetting, touch-up, replacement
- Integrity analysis
- Installation supervision
- Training



CERTIFICATIONS & APPROVALS

- ISO 9001:2015
- ASME U STAMP
- EN 1090-1:2009/A1:2011
- Relevant Certification for Russian Federation exportation (LoE, TRCU, Technical Passport)

CA.S.T.IM. 2000 s.r.l.



HEADQUARTER AND SALES CONTACTS

HEADQUARTER

Regione Mombello, 6
12040 VEZZA D'ALBA (CN) ITALY
Ph. +39 0173 65137 - Fax +39
0173 65142
info@castim2000.it

BACK OFFICE

Ph. +39 0173 65137
sales@castim2000.com

EXPORT SALES

Mr. Dario Vico – Export Mng.
Ph. +39 0173 65137-203
dario.vico@castim2000.com