



CITY **BUILDING**

CAPABILITY STATEMENT

E: admin@citibuilding.com.au
5/33 Phillips Road
Kogarah NSW 2217



Citi Building provides their clients total Build and Management solutions encompassing the construction of commercial, residential and mix-use Multi Dwelling Developments.

We have a professional team of skilled Project and Site managers along with dedicated administrative staff, foreman and labourers. We are a highly driven and committed team who strive to deliver exceptional results for our clients irrespective of project value. We pride ourselves in providing a high standard of service as well as a quality finish for our clients.

Our projects range from residential houses, office fitouts to multi-dwelling residential developments typically ranging from \$500k to \$10m. We have proven experience in the commercial sector managing the Construction of a state of the art High Care facility in Gladesville and are currently on board for the next development in Blakehurst.

Our objective is to procure projects at competitive pricing, provide safe working conditions and deliver quality work within a reasonable time frame every time.

INTRODUCING
CITI BUILDING

RESIDENTIAL

CARINGBAH

556 PORT HACKING RD, CARINGBAH

Residential Duplex

This modern duplex two storey development is a complete knock down and rebuild. Features in these architecturally designed homes to include an off form finish to external walls, landscaped gardens, security alarm, access control, LED Lighting throughout as well as garage panel lift doors.

Project Value: \$1m

CITY BUILDING

ST ANDREWS HOMES

5-7 PEARSON ST, GLADESVILLE

Newly constructed permanent care facility

St Andrews Homes is a disability care facility that has been architecturally designed and constructed to accommodate ten young adults with physical and intellectual disabilities. The development which is spread across four levels including a basement carpark comprises of ten independent living apartments, multipurpose communal areas and four executive offices. With state of the art facilities including a commercial grade kitchen, hydrotherapy bath, landscaped gardens, nurse call systems, security monitoring and is fully automated systemax structured cabling system.

CITY
BUILDING



COMMERCIAL

Project Value: \$4.5m

RESIDENTIAL/ COMMERCIAL

Project Value: \$4.5m



DULWICH HILL

503- 507 MARRICKVILLE RD, DULWICH HILL

Residential Boarding House

This boarding house situated in the heart of Dulwich Hill is scheduled construction in late 2015. Spanning over four levels this development includes 32 self-contained apartments, including seven accessible units and a managers room. The ground floor level will be set aside as commercial space.

CITY BUILDING

BRIGHTON LE SANDS

340 BAY ST, BRIGHTON LE SANDS

Mix use Multi-Dwelling Development

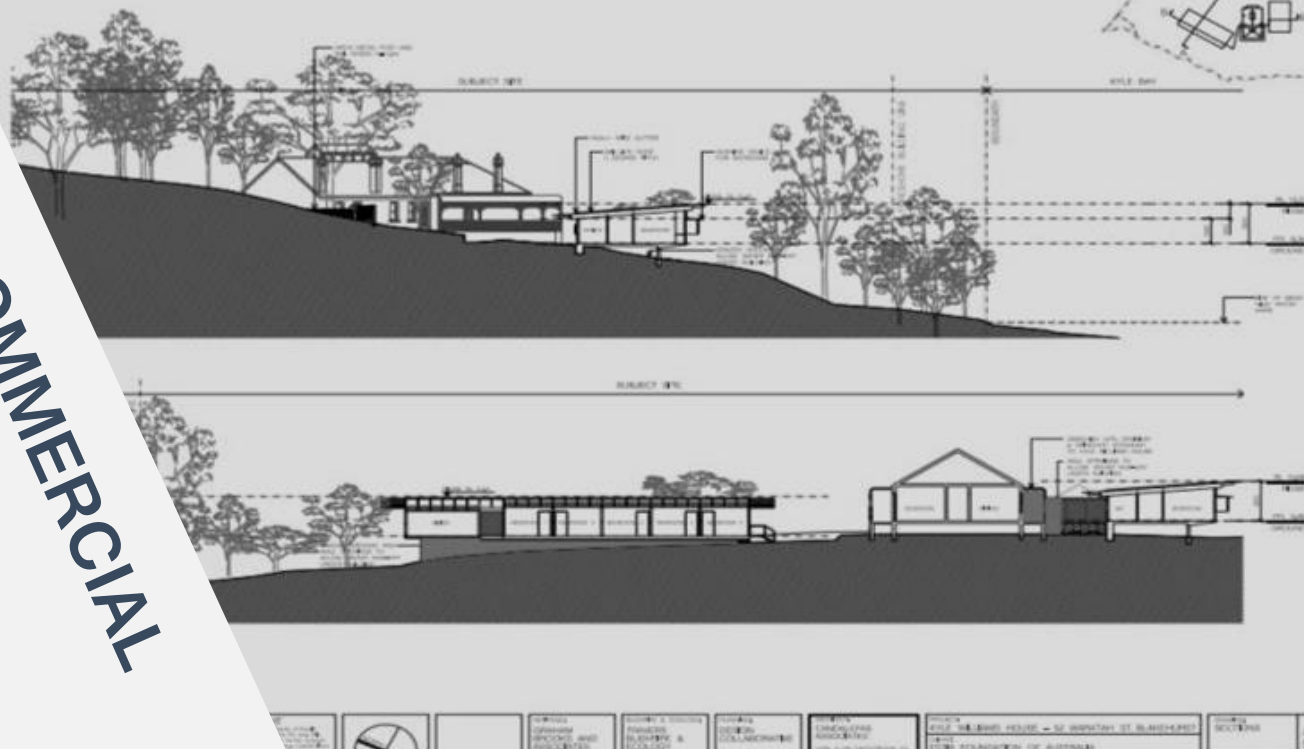
Located at 340 Bay Street, Brighton Le Sands this development spans over ten storeys and includes thirteen residential units, 1 level of commercial, ground floor retail shop front with basement level parking that includes a 15 car-stacker. This project was undertaken as a partially completed project, with unfinished structure and no works completed internally. The contract value was approximately \$3.5m and the construction program allowed 12 months for completion.

CITY
BUILDING

COMMERCIAL/ RESIDENTIAL

Project Value: \$3.5m

COMMERCIAL



KYLE WILLIAMS HOUSE

52 WARATAH ST, BLAKEHURST

Permanent Care Facility

This exciting new development located on the waterfront heritage listed Kyle Williams Estate is due to begin in 2017. This project will be undertaken over several stages. Stage 1 being the complete restoration of the Historical Kyle Williams house. The second stage is the addition of two separate respite facilities containing ten independent living apartments.

Project Value: \$7m

CITY BUILDING

ALPHA RESURANT

238 CASTLEREAGH ST, SYDNEY

Commercial Restaurant Fitout

Alpha Restaurant is located in a historic Victorian building in the heart of Sydney's CBD. Citi Building were contracted to conduct restoration and perform Base Building works including structural and make good. Providing tension ground anchors and restoration works to heritage parts of the building.

CITI
BUILDING



COMMERCIAL

Project Value: \$1.8m

CITI/**BUILDING**

E: admin@citibuilding.com.au
5/33 Phillips Road
Kogarah NSW 2217