

SUN STEEL TREATING, INC.

MI SARA ID #1360

Off-Site Response Plan

Original Plan Date:

June 15, 2011

Reviewed:

2017
2016
2015
2014
2013
2012



Homeland Security Division
1200 N. Telegraph Rd. – Bldg. 47W
Pontiac, MI 48341
Ph: 248-452-9879 Fax: 248-858-5550



OAKLAND COUNTY HOMELAND SECURITY DIVISION



**Oakland County LEPC
SARA Title III
EHS Section 302**

Sun Steel Treating, Inc.

1/20/2016

FACILITY INFORMATION

MI SARA ID#: 1360

Address: 550 N Mill Street
South Lyon, MI 48178

Nearest Crossroads: 10 Mile & Pontiac Trail

Fire Department: South Lyon Fire
Department

LEPC District: Oakland County

Type of Business: Steel Heat Treating

Owner/Manager:

Dennis Palmiter
877-471-0844 x254

Emergency Coordinator:

Dennis Palmiter
Office: 877-471-0844 x254
24 Hr: 248-756-2496

Alternate Coordinator:

Donna VanBuskirk
Office: 877-471-0844 x256
24 Hr: 877-471-0844

**Designated person to call National
Response Center, PEAS, and the LEPC:**
(must be done immediately upon the discovery of a
reportable release.)

Shop Foreman on Shift

BUILDING INFORMATION

Building Size: 40,000 SF

Stories: One

Construction Type: Metal Siding

Fire Supp. System: No

FDC Location: No

Utility Shut-off: Gas
Electric
Water

Location: North End of Building - Outside
Location: Northeast Corner of Building
Location: West Side Center of Building

Knox Box: No

CHEMICAL INVENTORY

EXTREMELY HAZARDOUS SUBSTANCES:

1. EHS Chemical Name: Ammonia Anhydrous

Product Name: Ammonia Anhydrous

CAS#: 7664-41-7 Storage: Cylinder

Single Largest Container: 150 lbs Maximum Amt: 900 lbs

Mixture Component/Chemical: Not a Mix % 100

If Amount Varies, Month Maximum Amount is on Site: Not Applicable

Vulnerability Zone (If applicable):

*ERPG3: 713 yards *ERPG2: 1458 yards

Chemical/Response Information Location: Lunch Room

Potential Hazards:

- TOXIC; may be fatal if inhaled
- May react violently with water
- Vapors cause irritation of eyes and respiratory tract
- Contact with liquid may cause frostbite and burn skin
- Vapors and Gas spread along ground

2. EHS Chemical Name: Sulfuric Acid

Product Name: Sulfuric Acid

CAS#: 7664-93-9 Storage: In batteries (total weight 18,078 lbs)

Single Largest Container: In batteries Maximum Amt: 1,988.58 lbs

Mixture Component/Chemical: In Batteries % 11

If Amount Varies, Month Maximum Amount is on Site: Not Applicable

Vulnerability Zone (If applicable):

*ERPG3: None *ERPG2: None

Chemical/Response Information Location: SPCC/PIP plan located in Maintenance Mgrs. Office

Potential Hazards:

- TOXIC; may be fatal if inhaled or absorbed through skin
- Fire will produce irritating, corrosive and/or toxic gases
- Contact with gas or liquefied gas may cause burns, severe injury and/or frostbite
- Some will react violently with air, moist air and/or water

OTHER CHEMICALS OF CONCERN (NON-EHS): Barium Compounds, Liquid Nitrogen, and Methyl Chloride



METHOD USED TO DETERMINE VULNERABLE ZONE:

The method for calculating the vulnerability zone was by using the single largest container of extremely hazardous substances. Then ALOHA was used to model the plume dispersion.

If there is no vulnerability zone, the chemical is not expected to go off site. Then, Oakland County LEPC has determined that there is no need to indicate:

- Population subject to risk
- Other facilities that may contribute to additional risk
- Protective concerns/actions needed to be addressed
- Site resources and procedures
- Notification numbers

***ERPG:** the maximum airborne concentration below which it is believed nearly all individuals could be exposed for up to one hour without experiencing or developing – ERPG3: life-threatening health effects or ERPG2: irreversible or other serious health effects or symptoms that could impair an individual's ability to take protective action.

AFFECTED FACILITIES:

For nearby facilities with special population and other facilities that may contribute a risk, Oakland County Geographic Information System (GIS) has plotted this information and can be accessed on a 24-hour basis. Maps and data are available on the Tier 2 Manager, in fire vehicles and in the Oakland County Emergency Operation Center. Also, a 302 EHS list is maintained and updated on an annual basis.

SITE RESOURCES AND PROCEDURES:

This site has equipment and trained personnel to contain a release. The emergency coordinator provides for the maintenance of the response equipment and response procedures. The facility maintains security control procedures as designated by their management for their site.

EHS TRANSPORTATION ROUTES:

Routes used to transport EHS are identified by the haulers and facilities. The main highways in Oakland County are I-75, I-275, I-96, I-696, U.S. 24, M-24 and M-59. Additional transportation routes are available in maps in the EOC and on the Oakland County GIS system.

COMMUNITY PROCEDURES AND RESOURCES:

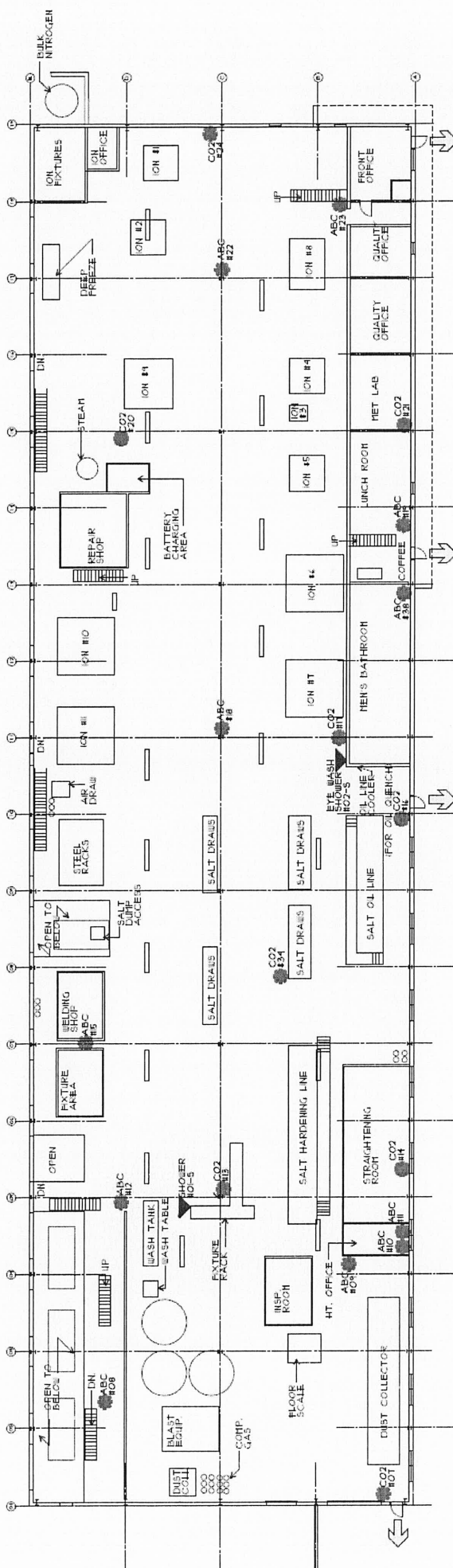
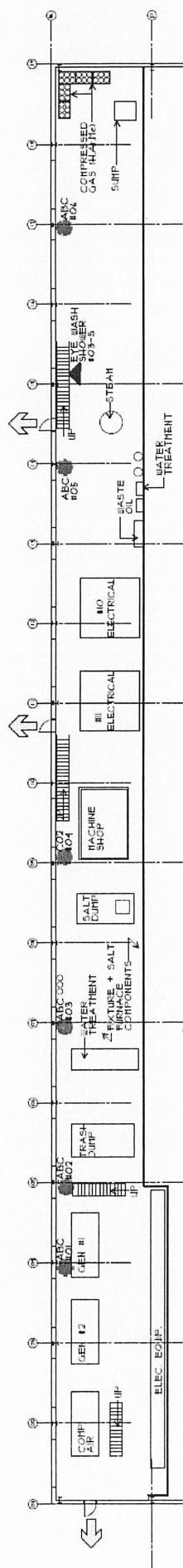
The fire department follows local procedures and plans for evacuation or shelter in place during an off-site response emergency. The vulnerability zone indicates (if one exists) the area of the community affected. Populations will be notified of specific actions to take if necessary by local fire department. The fire departments maintain emergency equipment and have identified specific personnel to be responsible for HAZMAT response equipment. The local community conducts exercises, training programs and develops schedules for such for local emergency response and medical personnel.

FACILITY EMERGENCY NOTIFICATION:

Federal, state, and local regulations require specific actions in response to hazardous material incidents. SARA requires immediate notification of a release under certain circumstances.

- | | |
|---|-------------------------------|
| • Fire Department | 9-1-1 |
| • National Response Center (NRC) | 1-800-424-8802 |
| • Local Emergency Planning Committee(LEPC) | 248-858-5300 |
| • State Emergency Response Comm.(MDEQ) | 1-800-292-4706 (PEAS Hotline) |
| • Department of Agriculture (farm related spills) | 1-800-405-0101 |
| • If Required by Public Act 142 | 9-1-1 |

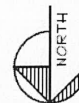




MAIN LEVEL FLOOR PLAN

SUN STEEL TREATING, INC.
550 NORTH MILL STREET

NOT TO SCALE
REVISED: NOVEMBER 2013



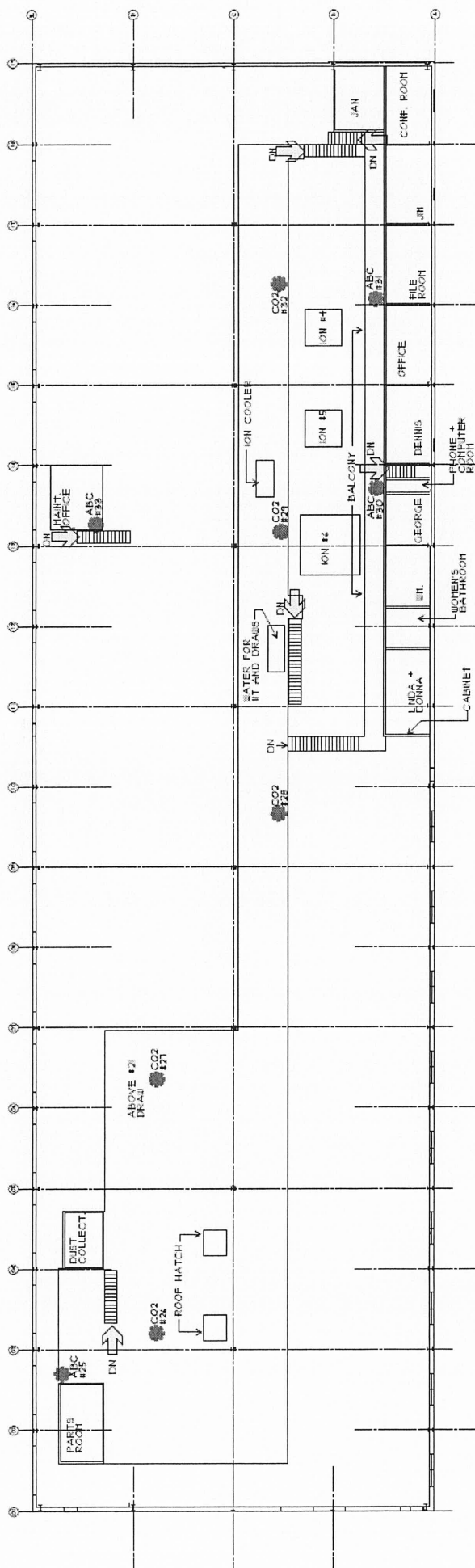
SYMBOL LEGEND

EXIT 

ABC / CO2 _____
100

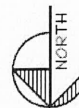
EYE WASH SHOWER #00-5 _____
 EYE WASH and/or SHOWER NUMBER





SUN STEEL TREATING, INC.
550 NORTH MILL STREET

NOT TO SCALE
REVISED: OCTOBER 2013

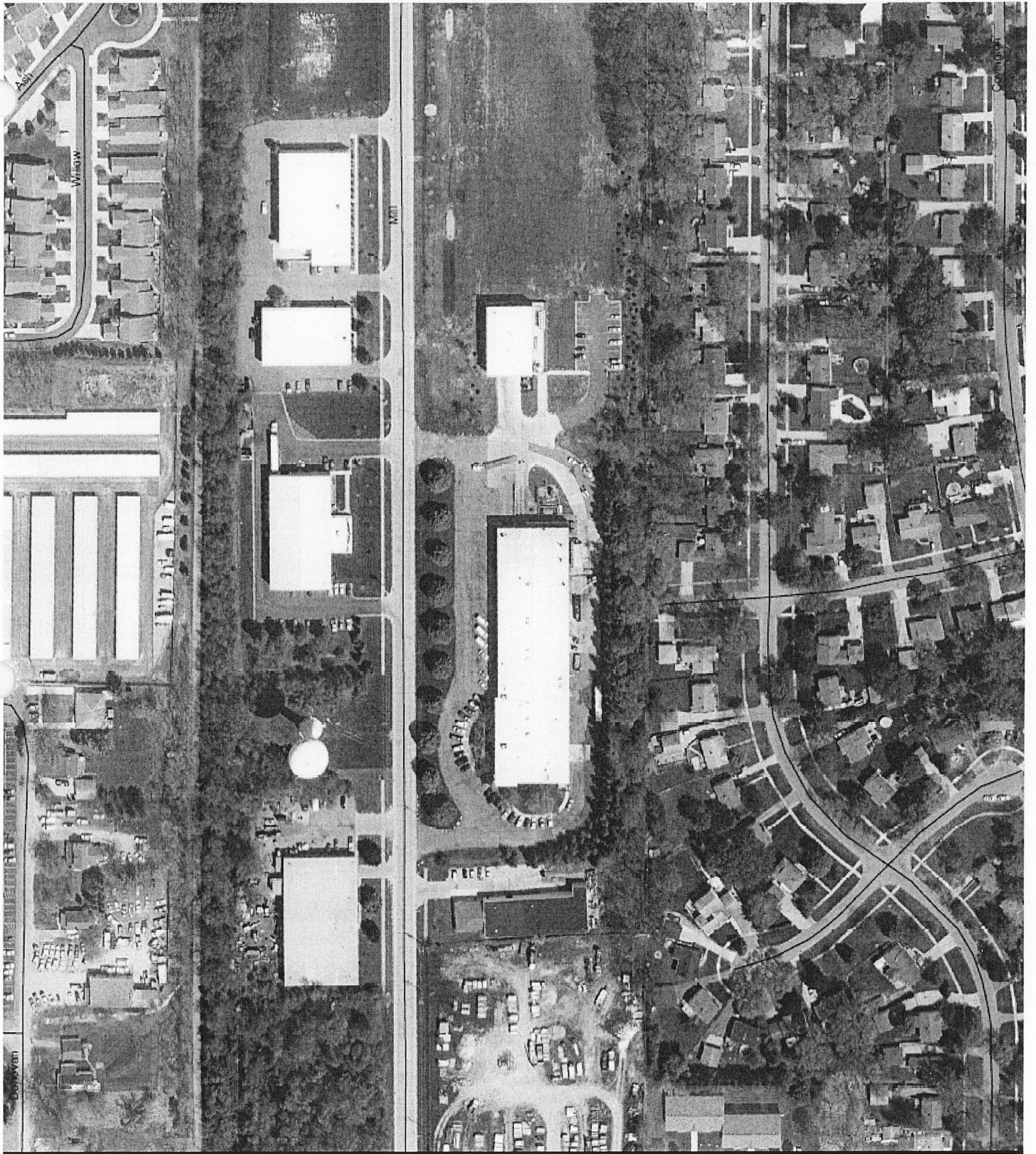


SYMBOL LEGEND



EXTINGUISHER / TYPE
NUMBER

EYE WASH and/or SHOWER
NUMBER





SWPPP SITE MAP





