

# SUN STEEL TREATING, INC.

MI SARA ID #1360

## Off-Site Response Plan

*Original Plan Date:*

June 15, 2011

*Reviewed:*

4/14/21  
2/26/2020  
4/2/2019  
2018  
2017  
2016  
2015  
2014  
2013  
2012



**Homeland Security Division**  
1200 N. Telegraph Rd. – Bldg. 47W  
Pontiac, MI 48341  
Ph: 248-452-9879 Fax: 248-858-5550



OAKLAND COUNTY HOMELAND SECURITY DIVISION





This page intentionally left blank



**Oakland County LEPC  
SARA Title III  
EHS Section 302**

**Sun Steel Treating, Inc.**

4/14/2021

**FACILITY INFORMATION**

**MI SARA ID#:** 1360

**Address:** 550 N Mill Street  
South Lyon, MI 48178

**Nearest Crossroads:** 10 Mile & Pontiac Trail

**Fire Department:** South Lyon Fire  
Department

**LEPC District:** Oakland County

**Type of Business:** Steel Heat Treating

**Owner/Manager:**

Jim McGuirk  
810-210-7310

**Emergency Coordinator:**

Andrew Smith  
Office: 877-471-0840  
24 Hr: 248-653-4819

**Alternate Coordinator:**

Jim McGuirk  
Office: 877-471-0844 x210  
24 Hr: 810-210-7310

**Designated person to call National  
Response Center, PEAS, and the LEPC:**  
(must be done immediately upon the discovery of a  
reportable release.)

Shop Foreman on Shift

**BUILDING INFORMATION**

**Building Size:** 40,000 SF

**Stories:** One

**Construction Type:** Metal Siding

**Fire Supp. System:** No

**FDC Location:** No

**Utility Shut-off:** Gas

**Location:** North End of Building - Outside

Electric

**Location:** Northeast Corner of Building

Water

**Location:** West Side Center of Building

**Knox Box:** No



## CHEMICAL INVENTORY

### EXTREMELY HAZARDOUS SUBSTANCES:

1. EHS Chemical Name: Ammonia Anhydrous

Product Name: Ammonia Anhydrous

CAS#: 7664-41-7 Storage: Cylinder

Single Largest Container: 150 lbs Maximum Amt: 1,050 lbs

Mixture Component/Chemical: Not a Mix % 100

If Amount Varies, Month Maximum Amount is on Site: Not Applicable

Vulnerability Zone (If applicable):

\*ERPG3: 713 yards \*ERPG2: 1458 yards

Chemical/Response Information Location: Lunch Room

#### Potential Hazards:

- TOXIC; may be fatal if inhaled
- May react violently with water
- Vapors cause irritation of eyes and respiratory tract
- Contact with liquid may cause frostbite and burn skin
- Vapors and Gas spread along ground

2. EHS Chemical Name: Sulfuric Acid

Product Name: Sulfuric Acid

CAS#: 7664-93-9 Storage: In batteries (total weight 17,470 lbs)

Single Largest Container: In batteries Maximum Amt: 1,922 lbs

Mixture Component/Chemical: In Batteries % 11

If Amount Varies, Month Maximum Amount is on Site: Not Applicable

Vulnerability Zone (If applicable):

\*ERPG3: None \*ERPG2: None

Chemical/Response Information Location: SPCC/PIP plan located in Maintenance Mgrs. Office

#### Potential Hazards:

- TOXIC; may be fatal if inhaled or absorbed through skin
- Fire will produce irritating, corrosive and/or toxic gases
- Contact with gas or liquefied gas may cause burns, severe injury and/or frostbite
- Some will react violently with air, moist air and/or water

**OTHER CHEMICALS OF CONCERN (NON-EHS):** Barium Compounds, Liquid Nitrogen, and Methyl Chloride





## METHOD USED TO DETERMINE VULNERABLE ZONE:

The method for calculating the vulnerability zone was by using the single largest container of extremely hazardous substances. Then ALOHA was used to model the plume dispersion.

If there is no vulnerability zone, the chemical is not expected to go off site. Then, Oakland County LEPC has determined that there is no need to indicate:

- Population subject to risk
- Other facilities that may contribute to additional risk
- Protective concerns/actions needed to be addressed
- Site resources and procedures
- Notification numbers

**\*ERPG:** the maximum airborne concentration below which it is believed nearly all individuals could be exposed for up to one hour without experiencing or developing – ERPG3: life-threatening health effects or ERPG2: irreversible or other serious health effects or symptoms that could impair an individual's ability to take protective action.



## AFFECTED FACILITIES:

For nearby facilities with special population and other facilities that may contribute a risk, Oakland County Geographic Information System (GIS) has plotted this information and can be accessed on a 24-hour basis. Maps and data are available on the Tier 2 Manager, in fire vehicles and in the Oakland County Emergency Operation Center. Also, a 302 EHS list is maintained and updated on an annual basis.

## SITE RESOURCES AND PROCEDURES:

This site has equipment and trained personnel to contain a release. The emergency coordinator provides for the maintenance of the response equipment and response procedures. The facility maintains security control procedures as designated by their management for their site.

## EHS TRANSPORTATION ROUTES:

Routes used to transport EHS are identified by the haulers and facilities. The main highways in Oakland County are I-75, I-275, I-96, I-696, U.S. 24, M-24 and M-59. Additional transportation routes are available in maps in the EOC and on the Oakland County GIS system.

## COMMUNITY PROCEDURES AND RESOURCES:

The fire department follows local procedures and plans for evacuation or shelter in place during an off-site response emergency. The vulnerability zone indicates (if one exists) the area of the community affected. Populations will be notified of specific actions to take if necessary by local fire department. The fire departments maintain emergency equipment and have identified specific personnel to be responsible for HAZMAT response equipment. The local community conducts exercises, training programs and develops schedules for such for local emergency response and medical personnel.

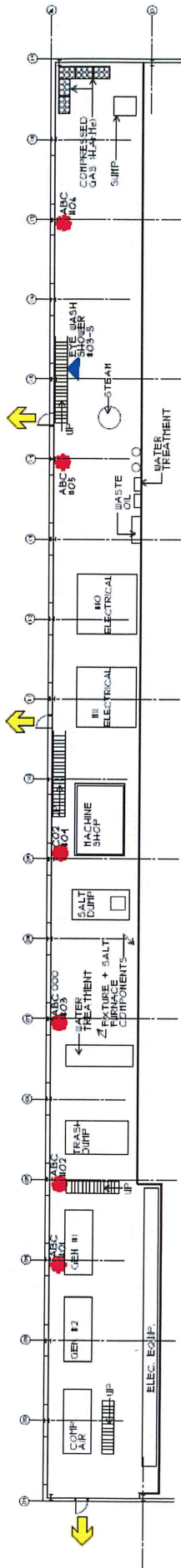
## FACILITY EMERGENCY NOTIFICATION:

Federal, state, and local regulations require specific actions in response to hazardous material incidents. SARA requires immediate notification of a release under certain circumstances.

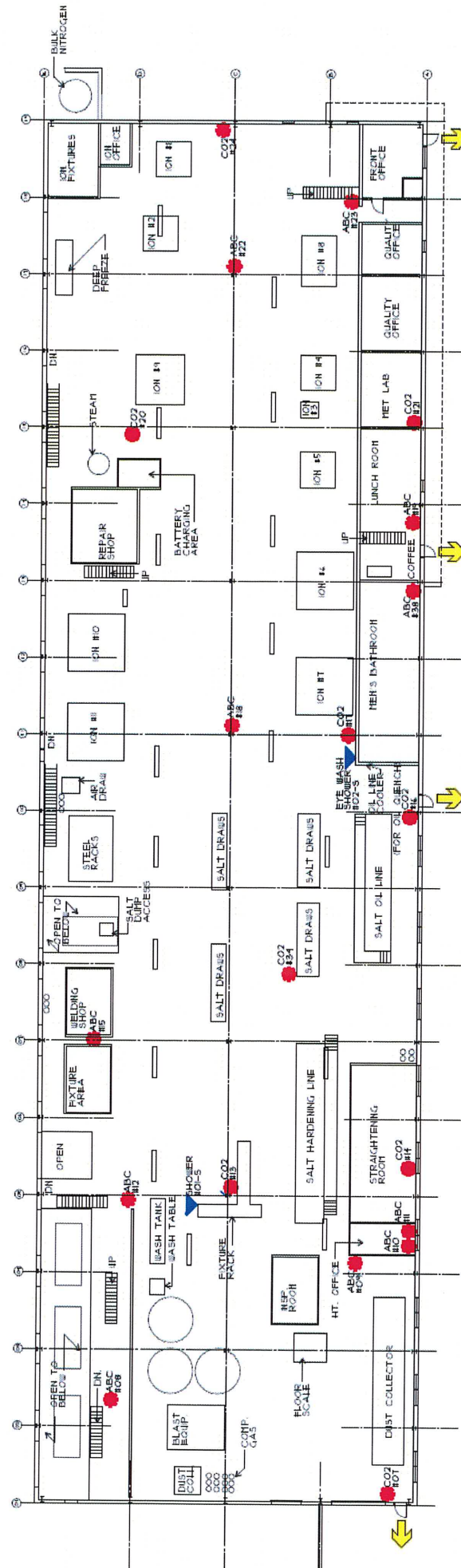
- |  |                               |
|--|-------------------------------|
| • <b>Fire Department</b>                                 | 9-1-1                         |
| • <b>National Response Center (NRC)</b>                  | 1-800-424-8802                |
| • <b>Local Emergency Planning Committee(LEPC)</b>        | 248-858-5300                  |
| • <b>State Emergency Response Comm.(MDEQ)</b>            | 1-800-292-4706 (PEAS Hotline) |
| • <b>Department of Agriculture (farm related spills)</b> | 1-800-405-0101                |
| • <b>If Required by Public Act 142</b>                   | 9-1-1                         |







**LOWER LEVEL  
FLOOR PLAN**



**MAIN LEVEL  
FLOOR PLAN**

**SYMBOL LEGEND**



ABC / CO2  
EXTINGUISHER / TYPE  
NUMBER

EYE WASH  
EYE WASH #00-5  
SHOWER  
EYE WASH #00-5

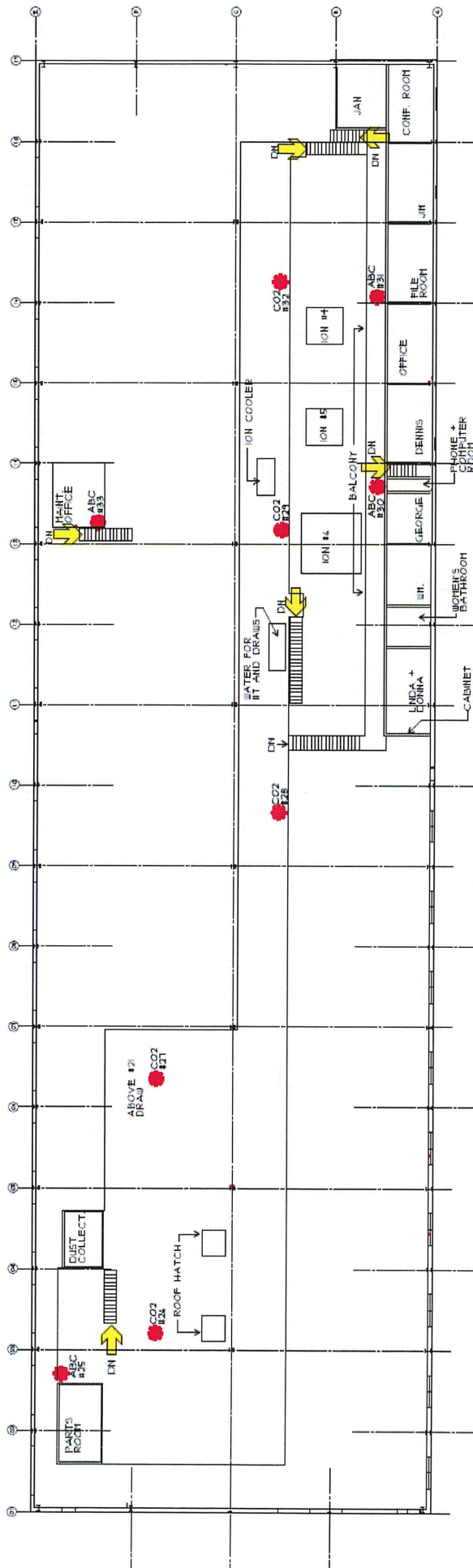


SUN STEEL TREATING, INC.  
950 NORTH MILL STREET

NOT TO SCALE  
REVISED: NOVEMBER 2013







# **MEZZANINE/CATWALK** **FLOOR PLAN**

SUN STEEL TREATING, INC.  
560 NORTH MILL STREET

## **SYMBOL LEGEND**

NOT TO SCALE  
REVISED: OCTOBER 2013



EXIT

ABC / CO2  
#00

EXTINGUISHER / TYPE  
NUMBER

EYE WASH  
#00-S

SHOWER  
#00-SR



