



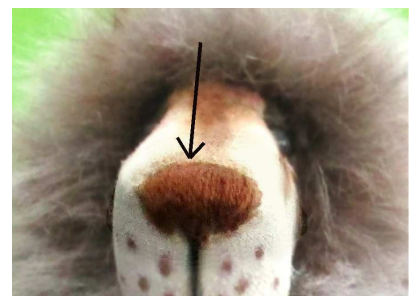
Never underestimate the nose ! It cannot be ignored, sitting as it does right in the center of your bear's face :) A well thought out nose, whether embroidered or felted can really add character to your bear

Here are some ideas and tips that I hope will help, and give you some ideas of your own to try too.



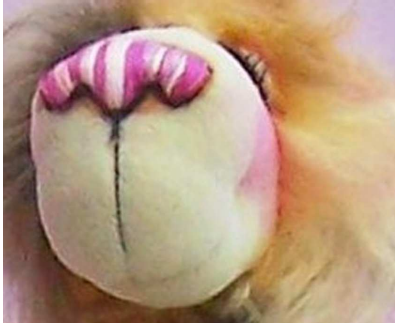
A TIP: Long fur has always been a nuisance for me when trying to embroider the nose as it easily gets caught up in the thread. The answer, wrap cling film around your bear's head to keep the fur out of the way (see left, always makes me smile :))

- The top edge of the nose should be nice and neat. Take your needle in here so that you can take control.
- Embroidering the nose over the head seam junction can be difficult. I often have a tug of war here but find a small pair of pliers helps me win and get the needle through the bulkier seams.
- Never be afraid to snip through the nose threads and start again if it looks wrong. The nose is far more accommodating than other parts of bear making !



DIFFERENT STYLES

Noses can play a big part in creating your bear's personality. Here's a few of sample noses



As the nose was very much part of this bear's features, I've shaped the nostrils. This is very easy to do (probably best on larger bears). Keep stitches in line along the top edge, but on each side of the nose, vary the lengths of stitches to create nostrils. After all that work, I like to emphasise the shape with a little pencil shading underneath.

This is a smaller bear who suited a neat, cute nose. I've shaded all the way around his nose too, which can help even out any wobbles. Noses don't have to be black or brown, do try a lighter colour for more impact.



Talking of colour, you can make quite a statement either with two or three different colour, or try a variegated thread like the rainbow one this bear has.

Even little bears can have more details added to their features. This mini bear has a large nose in



NEEDLE FELTING NOSES



At some point in your bear making you will want to try needle felting a nose. This does depend upon the type of bear you are making and works really well on bears with a little wackiness !

A felted nose works really well on those scruffier little bruins (see right :)



One of the things I particularly like with felted noses is that they can stand proud of the head and created a really different look. Something you cannot do with embroidered noses.

To felt the nose you will need a small handful of wool roving and a dry felting needle.

These come in different gauges. I find a No 36 or No 38 best.

Do be very careful when using these needles as they have very sharp barbs on the tips. Imagine working with a fishing hook !



Here's my method of nose felting

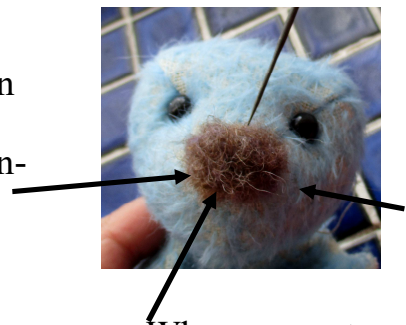
Begin by rolling a small pinch of roving in your hands to begin shaping. You can start with the nose directly on your bear if you are confident, but you might find it easier to start the felting off on a sponge block if you have one handy (a washing up sponge can work, but please stand it on a protective surface - not your knees !)

Set the roving in place on your bear and work on about half the wool, stabbing through this into the head to fix it in place



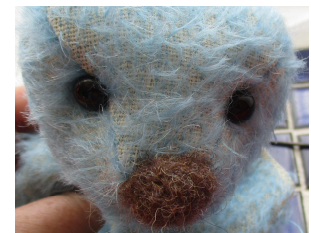
Keep stabbing away until you have created a nice bed (roughly in the shape you want).

Now we can bring the remainder of the wool down onto the nose. This time vary your stabs so that you use different direction. We still need to stab in-to the head



The nose should start to firm up now. When you get to this stage, work around the nose stabbing only through the nose (avoid the head now) This should really firm up the nose.

Make sure you have a neat top edge by working along this to finish.



The finished nose, standing nice and proud.

Hope this helps and adds another bow to your bear making.

*Enjoy your softie-making xx
Angela X*